



# Full wwPDB X-ray Structure Validation Report ⓘ

Aug 7, 2023 – 10:30 PM EDT

PDB ID : 1Q8Z  
Title : The apoenzyme structure of the yeast SR protein kinase, Sky1p  
Authors : Nolen, B.; Ngo, J.; Chakrabarti, S.; Vu, D.; Adams, J.A.; Ghosh, G.  
Deposited on : 2003-08-22  
Resolution : 2.35 Å(reported)

This is a Full wwPDB X-ray Structure Validation Report for a publicly released PDB entry.

We welcome your comments at [validation@mail.wwpdb.org](mailto:validation@mail.wwpdb.org)

A user guide is available at

<https://www.wwpdb.org/validation/2017/XrayValidationReportHelp>

with specific help available everywhere you see the ⓘ symbol.

The types of validation reports are described at

<http://www.wwpdb.org/validation/2017/FAQs#types>.

---

The following versions of software and data (see [references ⓘ](#)) were used in the production of this report:

MolProbity : 4.02b-467  
Mogul : 1.8.5 (274361), CSD as541be (2020)  
Xtriage (Phenix) : 1.13  
EDS : 2.35  
Percentile statistics : 20191225.v01 (using entries in the PDB archive December 25th 2019)  
Refmac : 5.8.0158  
CCP4 : 7.0.044 (Gargrove)  
Ideal geometry (proteins) : Engh & Huber (2001)  
Ideal geometry (DNA, RNA) : Parkinson et al. (1996)  
Validation Pipeline (wwPDB-VP) : 2.35

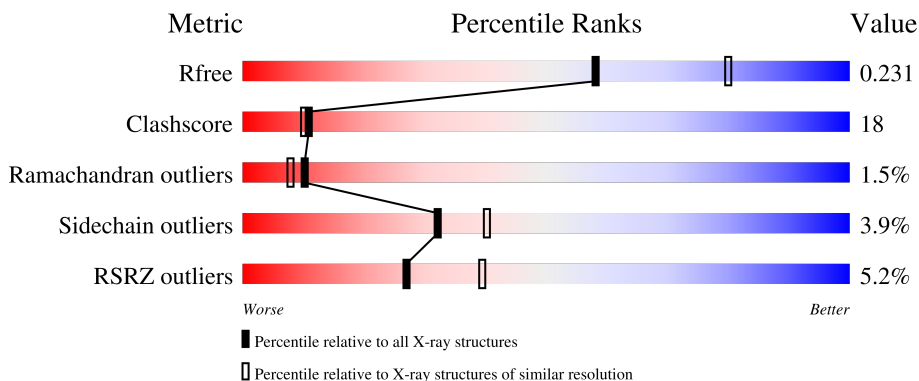
# 1 Overall quality at a glance

The following experimental techniques were used to determine the structure:

*X-RAY DIFFRACTION*

The reported resolution of this entry is 2.35 Å.

Percentile scores (ranging between 0-100) for global validation metrics of the entry are shown in the following graphic. The table shows the number of entries on which the scores are based.



Metric	Whole archive (#Entries)	Similar resolution (#Entries, resolution range(Å))
$R_{free}$	130704	1164 (2.36-2.36)
Clashscore	141614	1232 (2.36-2.36)
Ramachandran outliers	138981	1211 (2.36-2.36)
Sidechain outliers	138945	1212 (2.36-2.36)
RSRZ outliers	127900	1150 (2.36-2.36)

The table below summarises the geometric issues observed across the polymeric chains and their fit to the electron density. The red, orange, yellow and green segments of the lower bar indicate the fraction of residues that contain outliers for  $\geq 3$ , 2, 1 and 0 types of geometric quality criteria respectively. A grey segment represents the fraction of residues that are not modelled. The numeric value for each fraction is indicated below the corresponding segment, with a dot representing fractions  $\leq 5\%$ . The upper red bar (where present) indicates the fraction of residues that have poor fit to the electron density. The numeric value is given above the bar.

Mol	Chain	Length	Quality of chain
1	A	373	 4% 62% 30% • 5%
1	B	373	 6% 62% 32% • •

## 2 Entry composition [i](#)

There are 5 unique types of molecules in this entry. The entry contains 5943 atoms, of which 0 are hydrogens and 0 are deuteriums.

In the tables below, the ZeroOcc column contains the number of atoms modelled with zero occupancy, the AltConf column contains the number of residues with at least one atom in alternate conformation and the Trace column contains the number of residues modelled with at most 2 atoms.

- Molecule 1 is a protein called SR Protein Kinase.

Mol	Chain	Residues	Atoms					ZeroOcc	AltConf	Trace
			Total	C	N	O	S			
1	A	354	Total 2855	C 1835	N 486	O 522	S 12	0	0	0
1	B	364	Total 2933	C 1880	N 500	O 541	S 12	0	0	0

There are 4 discrepancies between the modelled and reference sequences:

Chain	Residue	Modelled	Actual	Comment	Reference
A	305	VAL	-	SEE REMARK 999	UNP Q03656
A	306	ASP	-	SEE REMARK 999	UNP Q03656
B	305	VAL	-	SEE REMARK 999	UNP Q03656
B	306	ASP	-	SEE REMARK 999	UNP Q03656

- Molecule 2 is SULFATE ION (three-letter code: SO<sub>4</sub>) (formula: O<sub>4</sub>S).



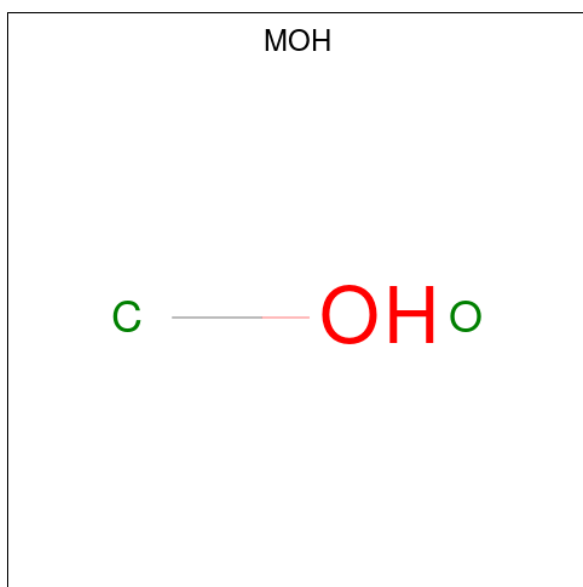
Mol	Chain	Residues	Atoms	ZeroOcc	AltConf
2	A	1	Total O S 5 4 1	0	0
2	B	1	Total O S 5 4 1	0	0

- Molecule 3 is 1,2-ETHANEDIOL (three-letter code: EDO) (formula: C<sub>2</sub>H<sub>6</sub>O<sub>2</sub>).



Mol	Chain	Residues	Atoms	ZeroOcc	AltConf
3	A	1	Total C O 4 2 2	0	0
3	B	1	Total C O 4 2 2	0	0

- Molecule 4 is METHANOL (three-letter code: MOH) (formula: CH<sub>4</sub>O).



Mol	Chain	Residues	Atoms	ZeroOcc	AltConf
4	A	1	Total C O 2 1 1	0	0
4	B	1	Total C O 2 1 1	0	0

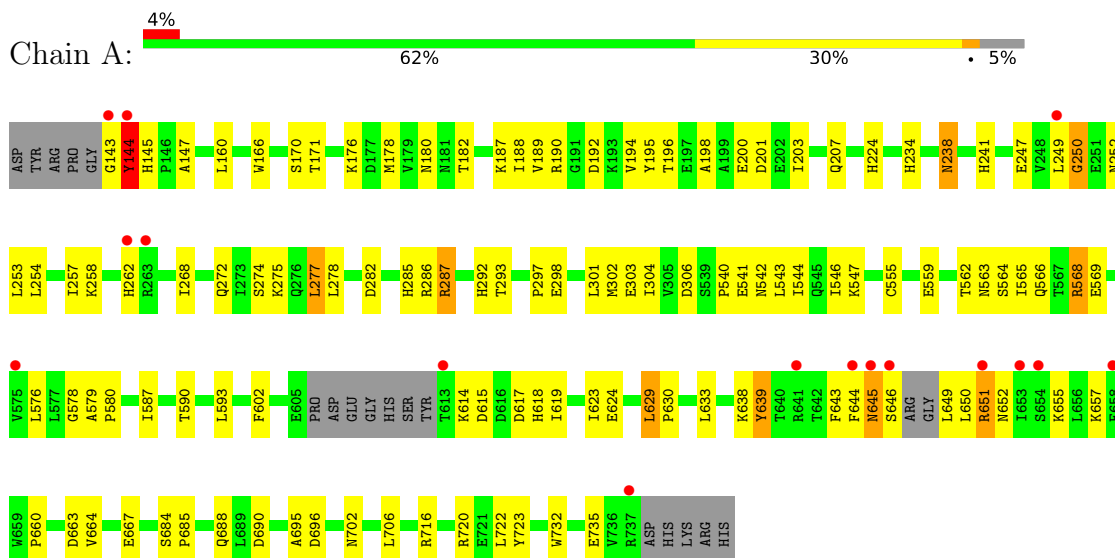
- Molecule 5 is water.

Mol	Chain	Residues	Atoms	ZeroOcc	AltConf
5	A	70	Total O 70 70	0	0
5	B	63	Total O 63 63	0	0

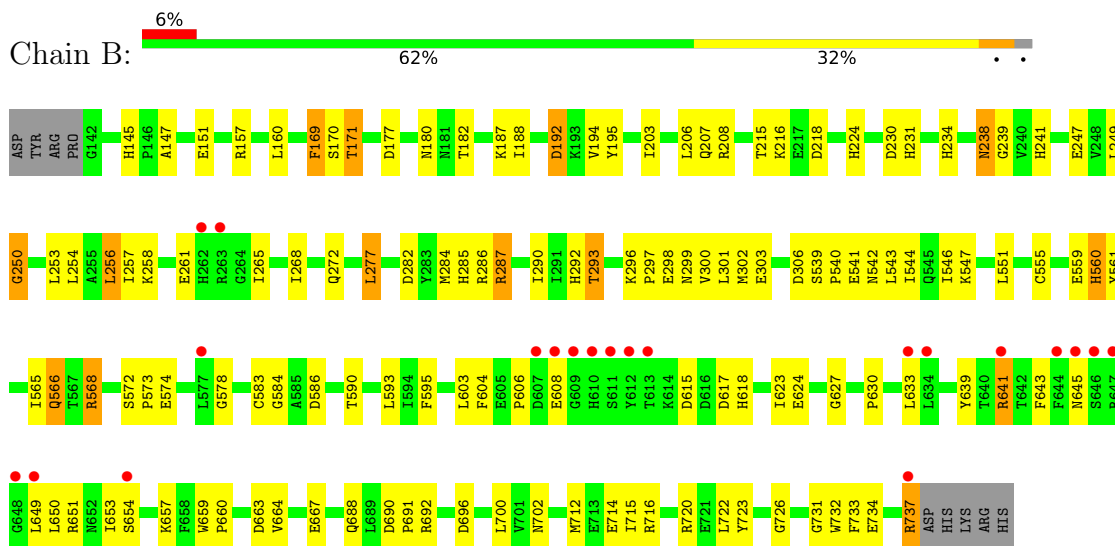
### 3 Residue-property plots i

These plots are drawn for all protein, RNA, DNA and oligosaccharide chains in the entry. The first graphic for a chain summarises the proportions of the various outlier classes displayed in the second graphic. The second graphic shows the sequence view annotated by issues in geometry and electron density. Residues are color-coded according to the number of geometric quality criteria for which they contain at least one outlier: green = 0, yellow = 1, orange = 2 and red = 3 or more. A red dot above a residue indicates a poor fit to the electron density ( $RSRZ > 2$ ). Stretches of 2 or more consecutive residues without any outlier are shown as a green connector. Residues present in the sample, but not in the model, are shown in grey.

- Molecule 1: SR Protein Kinase



- Molecule 1: SR Protein Kinase



## 4 Data and refinement statistics

Property	Value	Source
Space group	P 21 21 21	Depositor
Cell constants a, b, c, $\alpha$ , $\beta$ , $\gamma$	72.99Å 88.70Å 135.60Å 90.00° 90.00° 90.00°	Depositor
Resolution (Å)	20.00 – 2.35 49.68 – 2.35	Depositor EDS
% Data completeness (in resolution range)	91.6 (20.00-2.35) 83.5 (49.68-2.35)	Depositor EDS
$R_{merge}$	(Not available)	Depositor
$R_{sym}$	0.07	Depositor
$\langle I/\sigma(I) \rangle$ <sup>1</sup>	2.71 (at 2.34Å)	Xtrriage
Refinement program	CNS 1.0, XTALVIEW	Depositor
R, $R_{free}$	0.221 , 0.259 0.230 , 0.231	Depositor DCC
$R_{free}$ test set	1551 reflections (4.54%)	wwPDB-VP
Wilson B-factor (Å <sup>2</sup> )	32.4	Xtrriage
Anisotropy	0.458	Xtrriage
Bulk solvent $k_{sol}$ (e/Å <sup>3</sup> ), $B_{sol}$ (Å <sup>2</sup> )	0.34 , 42.4	EDS
L-test for twinning <sup>2</sup>	$\langle  L  \rangle = 0.48$ , $\langle L^2 \rangle = 0.31$	Xtrriage
Estimated twinning fraction	No twinning to report.	Xtrriage
$F_o, F_c$ correlation	0.94	EDS
Total number of atoms	5943	wwPDB-VP
Average B, all atoms (Å <sup>2</sup> )	37.0	wwPDB-VP

Xtrriage's analysis on translational NCS is as follows: *The analyses of the Patterson function reveals a significant off-origin peak that is 82.25 % of the origin peak, indicating pseudo-translational symmetry. The chance of finding a peak of this or larger height randomly in a structure without pseudo-translational symmetry is equal to 2.9174e-07. The detected translational NCS is most likely also responsible for the elevated intensity ratio.*

<sup>1</sup>Intensities estimated from amplitudes.

<sup>2</sup>Theoretical values of  $\langle |L| \rangle$ ,  $\langle L^2 \rangle$  for acentric reflections are 0.5, 0.333 respectively for untwinned datasets, and 0.375, 0.2 for perfectly twinned datasets.

## 5 Model quality

### 5.1 Standard geometry

Bond lengths and bond angles in the following residue types are not validated in this section: MOH, SO4, EDO

The Z score for a bond length (or angle) is the number of standard deviations the observed value is removed from the expected value. A bond length (or angle) with  $|Z| > 5$  is considered an outlier worth inspection. RMSZ is the root-mean-square of all Z scores of the bond lengths (or angles).

Mol	Chain	Bond lengths		Bond angles	
		RMSZ	# Z  >5	RMSZ	# Z  >5
1	A	0.39	0/2923	0.60	0/3955
1	B	0.37	0/3005	0.60	0/4068
All	All	0.38	0/5928	0.60	0/8023

There are no bond length outliers.

There are no bond angle outliers.

There are no chirality outliers.

There are no planarity outliers.

### 5.2 Too-close contacts

In the following table, the Non-H and H(model) columns list the number of non-hydrogen atoms and hydrogen atoms in the chain respectively. The H(added) column lists the number of hydrogen atoms added and optimized by MolProbity. The Clashes column lists the number of clashes within the asymmetric unit, whereas Symm-Clashes lists symmetry-related clashes.

Mol	Chain	Non-H	H(model)	H(added)	Clashes	Symm-Clashes
1	A	2855	0	2818	106	0
1	B	2933	0	2895	106	0
2	A	5	0	0	0	0
2	B	5	0	0	0	0
3	A	4	0	6	0	0
3	B	4	0	6	2	0
4	A	2	0	0	0	0
4	B	2	0	0	0	0
5	A	70	0	0	7	0
5	B	63	0	0	4	0
All	All	5943	0	5725	210	0



The all-atom clashscore is defined as the number of clashes found per 1000 atoms (including hydrogen atoms). The all-atom clashscore for this structure is 18.

All (210) close contacts within the same asymmetric unit are listed below, sorted by their clash magnitude.

Atom-1	Atom-2	Interatomic distance (Å)	Clash overlap (Å)
1:B:249:LEU:HD11	1:B:547:LYS:HD2	1.44	0.99
1:A:655:LYS:HD3	1:A:657:LYS:HE3	1.53	0.88
1:A:623:ILE:CD1	1:A:629:LEU:HD13	2.10	0.80
1:A:144:TYR:HB2	1:A:190:ARG:HG3	1.63	0.79
1:A:249:LEU:HD22	1:A:547:LYS:HD2	1.66	0.77
1:B:297:PRO:HD3	1:B:593:LEU:HD13	1.65	0.77
1:A:297:PRO:HD3	1:A:593:LEU:HD13	1.68	0.76
1:A:562:THR:HG22	1:A:564:SER:H	1.50	0.76
1:A:272:GLN:HE22	1:A:543:LEU:HA	1.51	0.75
1:B:306:ASP:OD2	1:B:540:PRO:HD2	1.87	0.75
1:A:568:ARG:HH12	1:A:614:LYS:CB	2.00	0.74
1:A:623:ILE:HD13	1:A:629:LEU:HD13	1.69	0.74
1:B:565:ILE:HG13	1:B:566:GLN:HG3	1.69	0.73
1:B:641:ARG:HE	1:B:641:ARG:HA	1.54	0.73
1:B:180:ASN:O	1:B:182:THR:HG23	1.89	0.72
1:A:176:LYS:HD3	1:A:178:MET:HE1	1.71	0.71
1:A:249:LEU:CD2	1:A:547:LYS:HD2	2.21	0.71
1:A:249:LEU:HD23	1:A:301:LEU:HB2	1.73	0.71
1:A:624:GLU:HG3	1:A:657:LYS:O	1.90	0.71
1:B:302:MET:HB3	1:B:546:ILE:HG22	1.73	0.70
1:A:249:LEU:HG	1:A:303:GLU:OE2	1.91	0.70
1:B:170:SER:OG	1:B:187:LYS:HG3	1.93	0.69
1:B:272:GLN:HE22	1:B:543:LEU:HA	1.56	0.69
1:A:180:ASN:O	1:A:182:THR:HG23	1.93	0.68
1:A:203:ILE:O	1:A:207:GLN:HG3	1.94	0.68
1:B:641:ARG:HA	1:B:641:ARG:NE	2.08	0.68
1:A:302:MET:HB2	1:A:546:ILE:HG22	1.75	0.67
1:B:238:ASN:H	1:B:238:ASN:ND2	1.93	0.66
1:B:216:LYS:HB2	1:B:216:LYS:NZ	2.09	0.66
1:B:696:ASP:O	1:B:700:LEU:HD12	1.96	0.66
1:B:169:PHE:HB3	1:B:195:TYR:CD2	2.31	0.65
1:B:660:PRO:O	1:B:664:VAL:HG23	1.95	0.65
1:A:252:ASN:OD1	1:A:254:LEU:HB2	1.98	0.64
1:B:169:PHE:HB3	1:B:195:TYR:HD2	1.62	0.64
1:B:630:PRO:HD2	1:B:633:LEU:HD12	1.79	0.64
1:A:542:ASN:HA	5:A:57:HOH:O	1.98	0.64
1:B:272:GLN:HE22	1:B:544:ILE:H	1.46	0.63

*Continued on next page...*

*Continued from previous page...*

Atom-1	Atom-2	Interatomic distance (Å)	Clash overlap (Å)
1:B:272:GLN:NE2	1:B:544:ILE:H	1.97	0.63
1:A:623:ILE:HD11	1:A:629:LEU:HD13	1.80	0.61
1:A:655:LYS:HE2	1:B:659:TRP:CH2	2.36	0.61
1:A:644:PHE:HA	1:A:649:LEU:O	2.01	0.60
1:A:306:ASP:OD2	1:A:540:PRO:HD2	2.02	0.59
1:A:170:SER:OG	1:A:187:LYS:HE3	2.03	0.59
1:A:304:ILE:N	1:A:304:ILE:HD12	2.17	0.59
1:B:572:SER:HB2	1:B:573:PRO:HD2	1.84	0.58
1:A:147:ALA:HB1	1:A:160:LEU:CD1	2.33	0.58
1:A:615:ASP:HB3	1:A:643:PHE:HE2	1.68	0.58
1:B:660:PRO:HD2	1:B:663:ASP:OD2	2.04	0.57
1:A:247:GLU:OE2	1:A:547:LYS:HE3	2.04	0.57
1:A:645:ASN:C	1:A:645:ASN:HD22	2.05	0.57
1:B:286:ARG:HB3	1:B:287:ARG:HE	1.69	0.57
1:B:147:ALA:HB1	1:B:160:LEU:CD1	2.34	0.57
1:A:565:ILE:HG13	1:A:566:GLN:HG3	1.85	0.57
1:B:170:SER:OG	1:B:187:LYS:HE3	2.04	0.57
1:B:216:LYS:HB2	1:B:216:LYS:HZ2	1.69	0.57
1:B:282:ASP:OD1	1:B:286:ARG:HD3	2.05	0.57
1:A:722:LEU:O	1:A:723:TYR:HB2	2.04	0.56
1:B:284:MET:HE2	1:B:290:ILE:HG22	1.87	0.56
1:A:145:HIS:HB2	1:A:241:HIS:NE2	2.20	0.56
1:B:604:PHE:O	1:B:606:PRO:HD3	2.05	0.56
1:A:645:ASN:ND2	1:A:646:SER:N	2.53	0.56
1:B:578:GLY:HA3	1:B:639:TYR:CE1	2.41	0.56
1:B:238:ASN:ND2	1:B:238:ASN:N	2.54	0.55
1:B:663:ASP:HB3	1:B:667:GLU:OE1	2.07	0.55
1:A:568:ARG:HH22	1:A:615:ASP:N	2.04	0.55
1:A:615:ASP:HB3	1:A:643:PHE:CE2	2.41	0.55
1:A:145:HIS:HB2	1:A:241:HIS:CD2	2.42	0.55
1:A:688:GLN:HE21	1:A:690:ASP:H	1.53	0.55
1:A:253:LEU:O	1:A:257:ILE:HG13	2.07	0.54
1:A:663:ASP:O	1:A:667:GLU:HB2	2.07	0.54
1:B:253:LEU:O	1:B:257:ILE:HG13	2.07	0.54
1:B:643:PHE:O	1:B:651:ARG:HG2	2.08	0.54
1:B:702:ASN:OD1	1:B:716:ARG:HB2	2.08	0.54
1:A:287:ARG:HG3	1:A:287:ARG:HH11	1.72	0.54
1:A:562:THR:HG22	1:A:563:ASN:N	2.23	0.54
1:A:170:SER:HB3	1:A:189:VAL:HA	1.91	0.53
1:A:639:TYR:CD1	1:A:639:TYR:N	2.76	0.53
1:B:583:CYS:HB2	1:B:732:TRP:CE3	2.44	0.53

*Continued on next page...*

*Continued from previous page...*

Atom-1	Atom-2	Interatomic distance (Å)	Clash overlap (Å)
1:B:624:GLU:HG2	1:B:657:LYS:O	2.08	0.53
1:A:638:LYS:HB2	1:A:639:TYR:CE1	2.43	0.53
1:A:143:GLY:N	1:A:190:ARG:HH21	2.07	0.53
1:A:638:LYS:HE3	5:A:121:HOH:O	2.07	0.53
1:A:143:GLY:HA3	1:A:166:TRP:HZ3	1.74	0.52
1:B:584:GLY:HA3	5:B:22:HOH:O	2.08	0.52
1:A:144:TYR:HD2	1:A:190:ARG:CG	2.22	0.52
1:B:253:LEU:HD22	1:B:300:VAL:HB	1.91	0.52
1:A:568:ARG:NH2	1:A:615:ASP:HA	2.24	0.52
1:B:285:HIS:HE1	1:B:586:ASP:OD2	1.93	0.52
1:B:203:ILE:O	1:B:207:GLN:HG3	2.10	0.51
1:B:145:HIS:HE1	1:B:151:GLU:OE2	1.94	0.51
1:B:238:ASN:N	1:B:238:ASN:HD22	2.07	0.51
1:A:587:ILE:HG13	1:A:732:TRP:HH2	1.75	0.51
1:B:287:ARG:HG3	1:B:287:ARG:HH11	1.75	0.51
1:B:546:ILE:C	1:B:546:ILE:HD12	2.31	0.51
1:A:297:PRO:HD3	1:A:593:LEU:CD1	2.38	0.51
1:A:254:LEU:O	1:A:258:LYS:HG3	2.10	0.51
1:A:644:PHE:O	1:A:651:ARG:HD2	2.09	0.51
1:B:224:HIS:HD2	1:B:546:ILE:O	1.94	0.51
1:B:292:HIS:C	1:B:293:THR:HG23	2.31	0.50
1:B:651:ARG:HB3	1:B:651:ARG:NH1	2.27	0.50
1:A:702:ASN:OD1	1:A:716:ARG:HB2	2.11	0.50
1:B:541:GLU:O	1:B:542:ASN:HB2	2.12	0.50
1:B:595:PHE:CD1	1:B:603:LEU:HD13	2.46	0.50
1:A:541:GLU:O	1:A:542:ASN:HB2	2.11	0.50
1:B:238:ASN:HD22	1:B:239:GLY:H	1.58	0.50
1:B:615:ASP:HB3	1:B:643:PHE:CE2	2.47	0.49
1:A:660:PRO:O	1:A:664:VAL:HG23	2.13	0.49
1:A:275:LYS:HD2	1:A:706:LEU:HB3	1.94	0.49
1:A:298:GLU:H	1:A:298:GLU:CD	2.16	0.48
1:A:559:GLU:HA	1:A:735:GLU:OE2	2.13	0.48
1:A:569:GLU:HG2	1:A:602:PHE:CE2	2.49	0.48
1:A:645:ASN:O	1:A:646:SER:HB2	2.14	0.48
1:B:623:ILE:HA	1:B:627:GLY:O	2.14	0.48
1:A:297:PRO:CD	1:A:593:LEU:HD13	2.43	0.47
1:B:177:ASP:OD2	1:B:180:ASN:ND2	2.47	0.47
1:A:192:ASP:OD1	1:A:194:VAL:HG23	2.15	0.47
1:A:546:ILE:HD12	1:A:546:ILE:C	2.35	0.47
1:B:578:GLY:HA3	1:B:639:TYR:CD1	2.50	0.47
1:B:254:LEU:O	1:B:258:LYS:HG3	2.15	0.47

*Continued on next page...*

*Continued from previous page...*

Atom-1	Atom-2	Interatomic distance (Å)	Clash overlap (Å)
1:B:206:LEU:HD23	1:B:551:LEU:HD12	1.97	0.47
1:A:224:HIS:HD2	1:A:546:ILE:O	1.98	0.46
1:B:284:MET:CE	1:B:290:ILE:HG22	2.46	0.46
1:A:144:TYR:HD2	1:A:190:ARG:HG3	1.80	0.46
1:B:539:SER:HB3	1:B:540:PRO:HD3	1.96	0.46
1:A:655:LYS:HG3	1:B:659:TRP:CZ2	2.51	0.46
1:B:192:ASP:OD2	1:B:194:VAL:HB	2.16	0.46
1:B:561:TYR:CE1	3:B:1003:EDO:H21	2.51	0.46
1:A:696:ASP:CG	1:A:720:ARG:HH21	2.18	0.46
1:B:171:THR:HG23	1:B:188:ILE:HB	1.98	0.45
1:B:692:ARG:HG2	1:B:733:PHE:CG	2.51	0.45
1:B:722:LEU:O	1:B:723:TYR:HB2	2.15	0.45
1:A:292:HIS:C	1:A:293:THR:HG23	2.37	0.45
1:A:578:GLY:HA3	1:A:639:TYR:CE1	2.52	0.45
1:A:660:PRO:HD2	1:A:663:ASP:OD2	2.16	0.45
1:B:256:LEU:HD13	1:B:265:ILE:HD13	1.98	0.45
1:B:688:GLN:HE21	1:B:690:ASP:H	1.65	0.45
1:A:304:ILE:N	1:A:304:ILE:CD1	2.80	0.45
1:A:643:PHE:O	1:A:650:LEU:HA	2.16	0.45
1:B:277:LEU:HD13	1:B:590:THR:HG23	1.98	0.45
1:B:651:ARG:CB	1:B:651:ARG:HH11	2.30	0.45
1:A:250:GLY:HA3	1:A:302:MET:O	2.16	0.45
1:B:561:TYR:CD1	3:B:1003:EDO:H21	2.52	0.44
1:B:256:LEU:HD22	1:B:265:ILE:CD1	2.48	0.44
1:A:285:HIS:HD2	5:A:2:HOH:O	1.99	0.44
1:A:277:LEU:CD1	1:A:590:THR:HG23	2.47	0.44
1:B:606:PRO:HA	1:B:617:ASP:OD2	2.17	0.44
1:A:645:ASN:C	1:A:645:ASN:ND2	2.70	0.44
1:B:268:ILE:HG23	5:B:35:HOH:O	2.16	0.44
1:A:579:ALA:HB1	1:A:580:PRO:HD2	2.00	0.44
1:B:287:ARG:HG3	1:B:287:ARG:NH1	2.33	0.44
1:B:145:HIS:HB2	1:B:241:HIS:NE2	2.33	0.44
1:A:170:SER:HB2	1:A:188:ILE:O	2.18	0.44
1:A:287:ARG:HG3	1:A:287:ARG:NH1	2.32	0.44
1:B:272:GLN:HE22	1:B:544:ILE:N	2.15	0.43
1:B:287:ARG:N	1:B:287:ARG:NE	2.66	0.43
1:A:684:SER:HB2	1:A:685:PRO:HD3	2.00	0.43
1:B:157:ARG:HH21	1:B:180:ASN:ND2	2.15	0.43
1:A:645:ASN:HD22	1:A:646:SER:N	2.16	0.43
1:B:712:MET:HA	1:B:715:ILE:HD12	2.00	0.43
1:B:731:GLY:HA2	1:B:734:GLU:O	2.18	0.43

*Continued on next page...*

*Continued from previous page...*

Atom-1	Atom-2	Interatomic distance (Å)	Clash overlap (Å)
1:B:301:LEU:O	1:B:546:ILE:HA	2.18	0.43
1:A:282:ASP:OD1	1:A:286:ARG:HD3	2.18	0.43
1:A:569:GLU:CD	1:A:569:GLU:H	2.22	0.43
1:B:645:ASN:HA	1:B:651:ARG:NH2	2.33	0.43
1:A:238:ASN:ND2	1:A:238:ASN:H	2.17	0.43
1:B:147:ALA:HA	1:B:151:GLU:OE1	2.19	0.43
1:A:272:GLN:NE2	1:A:544:ILE:H	2.17	0.43
1:A:268:ILE:HG23	5:A:26:HOH:O	2.19	0.42
1:A:555:CYS:HB2	1:A:559:GLU:O	2.19	0.42
1:A:695:ALA:HB1	5:A:95:HOH:O	2.18	0.42
1:B:287:ARG:NE	1:B:287:ARG:CA	2.81	0.42
1:A:569:GLU:HG2	1:A:602:PHE:CD2	2.53	0.42
1:B:546:ILE:HD12	1:B:546:ILE:O	2.19	0.42
1:A:287:ARG:HA	1:A:287:ARG:CZ	2.49	0.42
1:A:249:LEU:HD11	1:A:303:GLU:OE1	2.19	0.42
1:A:166:TRP:CZ3	1:A:171:THR:HG22	2.54	0.42
1:B:696:ASP:HA	1:B:732:TRP:CH2	2.54	0.42
1:A:145:HIS:CE1	1:A:234:HIS:HE1	2.38	0.42
1:B:145:HIS:HB2	1:B:241:HIS:CD2	2.55	0.42
1:A:576:LEU:HD11	1:A:618:HIS:CD2	2.55	0.42
1:A:696:ASP:HB2	5:A:23:HOH:O	2.19	0.42
1:B:298:GLU:OE1	1:B:298:GLU:N	2.48	0.42
1:A:198:ALA:O	1:A:201:ASP:HB2	2.20	0.41
1:A:568:ARG:HB2	5:A:68:HOH:O	2.20	0.41
1:B:230:ASP:OD1	1:B:231:HIS:N	2.51	0.41
1:B:249:LEU:HD12	1:B:301:LEU:HD12	2.02	0.41
1:B:249:LEU:O	1:B:250:GLY:O	2.38	0.41
1:B:650:LEU:HD23	1:B:653:ILE:HB	2.02	0.41
1:B:247:GLU:OE2	1:B:547:LYS:HE3	2.19	0.41
1:B:651:ARG:NH1	1:B:651:ARG:CB	2.83	0.41
1:A:249:LEU:HD23	1:A:301:LEU:CB	2.46	0.41
1:B:555:CYS:HB2	1:B:559:GLU:O	2.20	0.41
1:B:574:GLU:HG2	1:B:691:PRO:HG3	2.02	0.41
1:B:726:GLY:HA3	1:B:732:TRP:CE2	2.55	0.41
1:B:286:ARG:HD2	1:B:720:ARG:HD3	2.03	0.41
1:B:560:HIS:HE1	5:B:92:HOH:O	2.04	0.41
1:A:144:TYR:CD2	1:A:190:ARG:HG3	2.55	0.41
1:B:215:THR:O	1:B:218:ASP:HB2	2.21	0.41
1:B:250:GLY:HA3	1:B:302:MET:O	2.20	0.41
1:B:649:LEU:N	1:B:649:LEU:HD12	2.36	0.41
1:A:192:ASP:HB3	1:A:195:TYR:HD2	1.86	0.40

*Continued on next page...*

Continued from previous page...

Atom-1	Atom-2	Interatomic distance (Å)	Clash overlap (Å)
1:B:737:ARG:H	1:B:737:ARG:CD	2.34	0.40
1:A:615:ASP:O	1:A:619:ILE:HG13	2.21	0.40
1:B:296:LYS:HE2	1:B:299:ASN:ND2	2.35	0.40
1:A:196:THR:O	1:A:200:GLU:HG2	2.22	0.40
1:B:151:GLU:OE2	1:B:234:HIS:HE1	2.04	0.40
1:A:274:SER:O	1:A:278:LEU:HG	2.22	0.40
1:A:298:GLU:CD	1:A:298:GLU:N	2.75	0.40
1:A:630:PRO:HD2	1:A:633:LEU:HD12	2.03	0.40
1:B:568:ARG:HD2	5:B:27:HOH:O	2.20	0.40

There are no symmetry-related clashes.

## 5.3 Torsion angles [i](#)

### 5.3.1 Protein backbone [i](#)

In the following table, the Percentiles column shows the percent Ramachandran outliers of the chain as a percentile score with respect to all X-ray entries followed by that with respect to entries of similar resolution.

The Analysed column shows the number of residues for which the backbone conformation was analysed, and the total number of residues.

Mol	Chain	Analysed	Favoured	Allowed	Outliers	Percentiles	
1	A	348/373 (93%)	316 (91%)	27 (8%)	5 (1%)	11	9
1	B	362/373 (97%)	332 (92%)	24 (7%)	6 (2%)	9	7
All	All	710/746 (95%)	648 (91%)	51 (7%)	11 (2%)	10	8

All (11) Ramachandran outliers are listed below:

Mol	Chain	Res	Type
1	A	144	TYR
1	A	250	GLY
1	A	262	HIS
1	B	250	GLY
1	B	261	GLU
1	B	568	ARG
1	B	566	GLN
1	B	654	SER
1	A	651	ARG

Continued on next page...

*Continued from previous page...*

Mol	Chain	Res	Type
1	B	192	ASP
1	A	652	ASN

### 5.3.2 Protein sidechains [i](#)

In the following table, the Percentiles column shows the percent sidechain outliers of the chain as a percentile score with respect to all X-ray entries followed by that with respect to entries of similar resolution.

The Analysed column shows the number of residues for which the sidechain conformation was analysed, and the total number of residues.

Mol	Chain	Analysed	Rotameric	Outliers	Percentiles	
1	A	306/327 (94%)	297 (97%)	9 (3%)	42	52
1	B	316/327 (97%)	301 (95%)	15 (5%)	26	31
All	All	622/654 (95%)	598 (96%)	24 (4%)	32	40

All (24) residues with a non-rotameric sidechain are listed below:

Mol	Chain	Res	Type
1	A	144	TYR
1	A	238	ASN
1	A	277	LEU
1	A	287	ARG
1	A	568	ARG
1	A	617	ASP
1	A	629	LEU
1	A	639	TYR
1	A	645	ASN
1	B	169	PHE
1	B	171	THR
1	B	208	ARG
1	B	238	ASN
1	B	256	LEU
1	B	277	LEU
1	B	287	ARG
1	B	293	THR
1	B	303	GLU
1	B	560	HIS
1	B	608	GLU
1	B	618	HIS

*Continued on next page...*

*Continued from previous page...*

Mol	Chain	Res	Type
1	B	641	ARG
1	B	714	GLU
1	B	737	ARG

Sometimes sidechains can be flipped to improve hydrogen bonding and reduce clashes. All (21) such sidechains are listed below:

Mol	Chain	Res	Type
1	A	145	HIS
1	A	224	HIS
1	A	234	HIS
1	A	238	ASN
1	A	272	GLN
1	A	285	HIS
1	A	618	HIS
1	A	645	ASN
1	A	688	GLN
1	B	145	HIS
1	B	168	HIS
1	B	180	ASN
1	B	224	HIS
1	B	234	HIS
1	B	238	ASN
1	B	272	GLN
1	B	285	HIS
1	B	560	HIS
1	B	621	GLN
1	B	636	ASN
1	B	688	GLN

### 5.3.3 RNA [i](#)

There are no RNA molecules in this entry.

### 5.4 Non-standard residues in protein, DNA, RNA chains [i](#)

There are no non-standard protein/DNA/RNA residues in this entry.

### 5.5 Carbohydrates [i](#)

There are no monosaccharides in this entry.



## 5.6 Ligand geometry

6 ligands are modelled in this entry.

In the following table, the Counts columns list the number of bonds (or angles) for which Mogul statistics could be retrieved, the number of bonds (or angles) that are observed in the model and the number of bonds (or angles) that are defined in the Chemical Component Dictionary. The Link column lists molecule types, if any, to which the group is linked. The Z score for a bond length (or angle) is the number of standard deviations the observed value is removed from the expected value. A bond length (or angle) with  $|Z| > 2$  is considered an outlier worth inspection. RMSZ is the root-mean-square of all Z scores of the bond lengths (or angles).

Mol	Type	Chain	Res	Link	Bond lengths			Bond angles		
					Counts	RMSZ	# Z  > 2	Counts	RMSZ	# Z  > 2
4	MOH	A	2390	4	1,1,1	0.47	0	-		
3	EDO	A	1000	-	3,3,3	0.96	0	2,2,2	0.49	0
3	EDO	B	1003	-	3,3,3	1.07	0	2,2,2	0.46	0
4	MOH	B	2389	4	1,1,1	0.46	0	-		
2	SO4	A	801	-	4,4,4	0.31	0	6,6,6	0.10	0
2	SO4	B	802	-	4,4,4	0.30	0	6,6,6	0.11	0

In the following table, the Chirals column lists the number of chiral outliers, the number of chiral centers analysed, the number of these observed in the model and the number defined in the Chemical Component Dictionary. Similar counts are reported in the Torsion and Rings columns. '-' means no outliers of that kind were identified.

Mol	Type	Chain	Res	Link	Chirals	Torsions	Rings
3	EDO	B	1003	-	-	1/1/1/1	-
3	EDO	A	1000	-	-	1/1/1/1	-

There are no bond length outliers.

There are no bond angle outliers.

There are no chirality outliers.

All (2) torsion outliers are listed below:

Mol	Chain	Res	Type	Atoms
3	A	1000	EDO	O1-C1-C2-O2
3	B	1003	EDO	O1-C1-C2-O2

There are no ring outliers.

1 monomer is involved in 2 short contacts:

Mol	Chain	Res	Type	Clashes	Symm-Clashes
3	B	1003	EDO	2	0

## 5.7 Other polymers [i](#)

There are no such residues in this entry.

## 5.8 Polymer linkage issues [i](#)

There are no chain breaks in this entry.

## 6 Fit of model and data

### 6.1 Protein, DNA and RNA chains

In the following table, the column labelled ‘#RSRZ > 2’ contains the number (and percentage) of RSRZ outliers, followed by percent RSRZ outliers for the chain as percentile scores relative to all X-ray entries and entries of similar resolution. The OWAB column contains the minimum, median, 95<sup>th</sup> percentile and maximum values of the occupancy-weighted average B-factor per residue. The column labelled ‘Q < 0.9’ lists the number of (and percentage) of residues with an average occupancy less than 0.9.

Mol	Chain	Analysed	<RSRZ>	#RSRZ>2	OWAB(Å <sup>2</sup> )	Q<0.9
1	A	354/373 (94%)	0.15	16 (4%) 33 46	18, 34, 60, 80	0
1	B	364/373 (97%)	0.24	21 (5%) 23 33	17, 34, 64, 76	0
All	All	718/746 (96%)	0.20	37 (5%) 27 39	17, 34, 62, 80	0

All (37) RSRZ outliers are listed below:

Mol	Chain	Res	Type	RSRZ
1	B	648	GLY	6.4
1	A	641	ARG	6.1
1	B	609	GLY	4.9
1	B	649	LEU	4.7
1	B	610	HIS	4.3
1	B	646	SER	4.2
1	B	611	SER	4.1
1	B	641	ARG	3.8
1	A	613	THR	3.6
1	B	577	LEU	3.4
1	A	262	HIS	3.2
1	B	607	ASP	3.2
1	A	654	SER	3.0
1	B	633	LEU	3.0
1	A	658	PHE	3.0
1	B	654	SER	2.9
1	A	645	ASN	2.9
1	A	144	TYR	2.8
1	A	644	PHE	2.8
1	B	613	THR	2.8
1	A	651	ARG	2.8
1	B	263	ARG	2.8
1	B	644	PHE	2.7
1	B	737	ARG	2.7

*Continued on next page...*

*Continued from previous page...*

Mol	Chain	Res	Type	RSRZ
1	B	612	TYR	2.7
1	B	645	ASN	2.7
1	B	262	HIS	2.6
1	B	647	ARG	2.5
1	A	575	VAL	2.5
1	B	634	LEU	2.5
1	A	249	LEU	2.4
1	A	143	GLY	2.2
1	A	263	ARG	2.2
1	A	653	ILE	2.2
1	B	608	GLU	2.2
1	A	646	SER	2.1
1	A	737	ARG	2.1

## 6.2 Non-standard residues in protein, DNA, RNA chains [i](#)

There are no non-standard protein/DNA/RNA residues in this entry.

## 6.3 Carbohydrates [i](#)

There are no monosaccharides in this entry.

## 6.4 Ligands [i](#)

In the following table, the Atoms column lists the number of modelled atoms in the group and the number defined in the chemical component dictionary. The B-factors column lists the minimum, median, 95<sup>th</sup> percentile and maximum values of B factors of atoms in the group. The column labelled 'Q< 0.9' lists the number of atoms with occupancy less than 0.9.

Mol	Type	Chain	Res	Atoms	RSCC	RSR	B-factors( $\text{\AA}^2$ )	Q<0.9
4	MOH	B	2389	2/2	0.76	0.17	51,51,51,52	0
3	EDO	A	1000	4/4	0.84	0.25	34,34,35,37	0
4	MOH	A	2390	2/2	0.88	0.12	45,45,45,47	0
2	SO4	B	802	5/5	0.88	0.18	81,81,82,83	0
3	EDO	B	1003	4/4	0.91	0.18	37,38,38,38	0
2	SO4	A	801	5/5	0.97	0.10	57,58,59,59	0

## 6.5 Other polymers [i](#)

There are no such residues in this entry.