



Full wwPDB X-ray Structure Validation Report ⓘ

Jun 12, 2024 – 09:05 AM EDT

PDB ID : 1OYE
Title : Structural Basis of Multiple Binding Capacity of the AcrB multidrug Efflux Pump
Authors : Yu, E.W.; McDermott, G.; Zgurskaya, H.I.; Nikaido, H.; Koshland Jr., D.E.
Deposited on : 2003-04-03
Resolution : 3.48 Å(reported)

This is a Full wwPDB X-ray Structure Validation Report for a publicly released PDB entry.

We welcome your comments at validation@mail.wwpdb.org

A user guide is available at

<https://www.wwpdb.org/validation/2017/XrayValidationReportHelp>

with specific help available everywhere you see the ⓘ symbol.

The types of validation reports are described at

<http://www.wwpdb.org/validation/2017/FAQs#types>.

The following versions of software and data (see [references ⓘ](#)) were used in the production of this report:

MolProbity : 4.02b-467
Mogul : 2022.3.0, CSD as543be (2022)
Xtriage (Phenix) : 1.20.1
EDS : 2.36.2
buster-report : 1.1.7 (2018)
Percentile statistics : 20191225.v01 (using entries in the PDB archive December 25th 2019)
Refmac : 5.8.0158
CCP4 : 7.0.044 (Gargrove)
Ideal geometry (proteins) : Engh & Huber (2001)
Ideal geometry (DNA, RNA) : Parkinson et al. (1996)
Validation Pipeline (wwPDB-VP) : 2.36.2

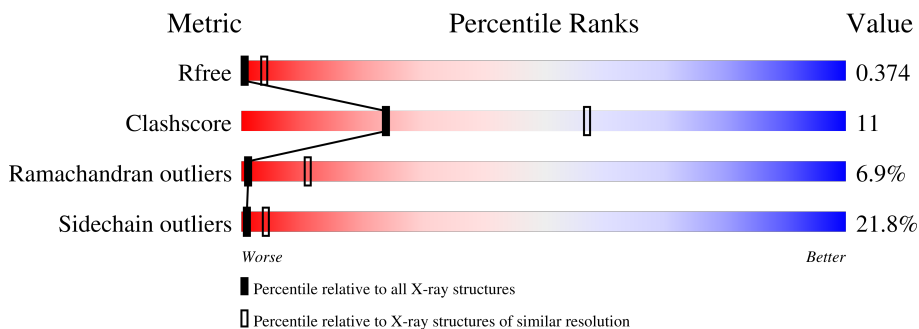
1 Overall quality at a glance

The following experimental techniques were used to determine the structure:

X-RAY DIFFRACTION


The reported resolution of this entry is 3.48 Å.

Percentile scores (ranging between 0-100) for global validation metrics of the entry are shown in the following graphic. The table shows the number of entries on which the scores are based.



Metric	Whole archive (#Entries)	Similar resolution (#Entries, resolution range(Å))
R_{free}	130704	1379 (3.56-3.40)
Clashscore	141614	1461 (3.56-3.40)
Ramachandran outliers	138981	1424 (3.56-3.40)
Sidechain outliers	138945	1425 (3.56-3.40)

The table below summarises the geometric issues observed across the polymeric chains and their fit to the electron density. The red, orange, yellow and green segments of the lower bar indicate the fraction of residues that contain outliers for ≥ 3 , 2, 1 and 0 types of geometric quality criteria respectively. A grey segment represents the fraction of residues that are not modelled. The numeric value for each fraction is indicated below the corresponding segment, with a dot representing fractions $\leq 5\%$.

Mol	Chain	Length	Quality of chain
1	A	1049	

2 Entry composition [i](#)

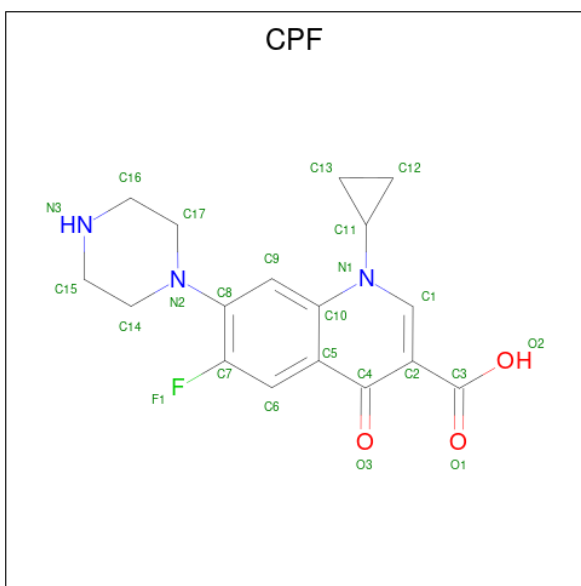
There are 2 unique types of molecules in this entry. The entry contains 7663 atoms, of which 0 are hydrogens and 0 are deuteriums.

In the tables below, the ZeroOcc column contains the number of atoms modelled with zero occupancy, the AltConf column contains the number of residues with at least one atom in alternate conformation and the Trace column contains the number of residues modelled with at most 2 atoms.

- Molecule 1 is a protein called Acriflavine resistance protein B.

Mol	Chain	Residues	Atoms					ZeroOcc	AltConf	Trace
			Total	C	N	O	S			
1	A	1006	7639	4916	1262	1419	42	0	0	0

- Molecule 2 is 1-CYCLOPROPYL-6-FLUORO-4-OXO-7-PIPERAZIN-1-YL-1,4-DIHYDRO QUINOLINE-3-CARBOXYLIC ACID (three-letter code: CPF) (formula: C₁₇H₁₈FN₃O₃).



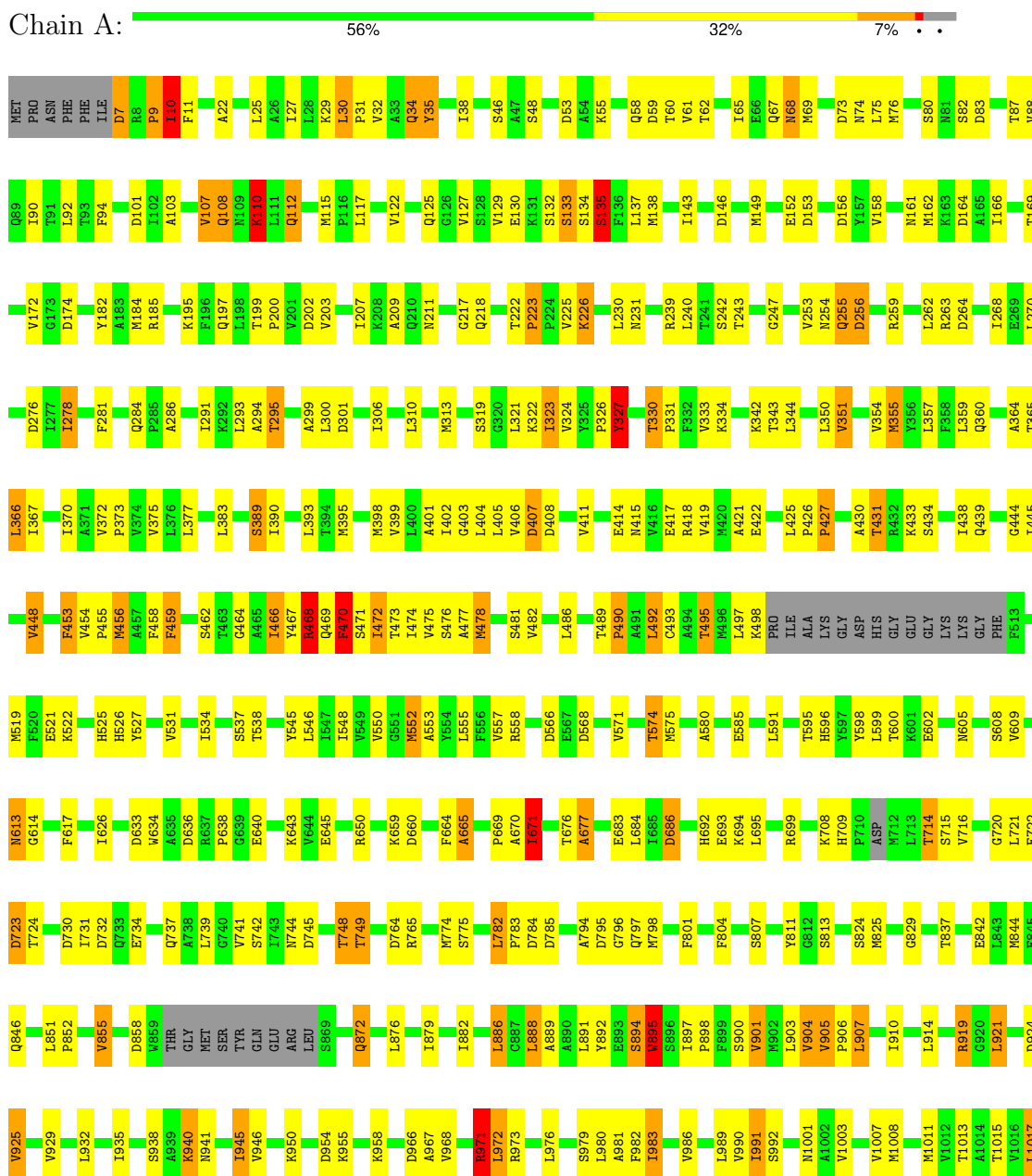
Mol	Chain	Residues	Atoms					ZeroOcc	AltConf
			Total	C	F	N	O		
2	A	1	24	17	1	3	3	0	0

3 Residue-property plots

These plots are drawn for all protein, RNA, DNA and oligosaccharide chains in the entry. The first graphic for a chain summarises the proportions of the various outlier classes displayed in the second graphic. The second graphic shows the sequence view annotated by issues in geometry. Residues are color-coded according to the number of geometric quality criteria for which they contain at least one outlier: green = 0, yellow = 1, orange = 2 and red = 3 or more. Stretches of 2 or more consecutive residues without any outlier are shown as a green connector. Residues present in the sample, but not in the model, are shown in grey.

- Molecule 1: Acriflavine resistance protein B

Chain A:



A1018	I1019	F1020	F1021	V1022	P1023	V1024	F1025	F1026	V1027	V1028	V1029	R1030	R1031	R1032	F1033	S1034	R1035	K1036	ASN	GLU	ASP	ILE	GLU	HIS	SER	HIS	THR	VAL	ASP	HIS	HIS
-------	-------	-------	-------	-------	-------	-------	-------	-------	-------	-------	-------	-------	-------	-------	-------	-------	-------	-------	-----	-----	-----	-----	-----	-----	-----	-----	-----	-----	-----	-----	-----

4 Data and refinement statistics

Property	Value	Source
Space group	H 3 2	Depositor
Cell constants a, b, c, α , β , γ	145.11Å 145.11Å 517.16Å 90.00° 90.00° 120.00°	Depositor
Resolution (Å)	46.60 – 3.48 45.05 – 3.48	Depositor EDS
% Data completeness (in resolution range)	99.0 (46.60-3.48) 99.1 (45.05-3.48)	Depositor EDS
R_{merge}	(Not available)	Depositor
R_{sym}	(Not available)	Depositor
$\langle I/\sigma(I) \rangle$ ¹	2.66 (at 3.48Å)	Xtrriage
Refinement program	REFMAC 5.0	Depositor
R, R_{free}	0.257 , 0.323 0.375 , 0.374	Depositor DCC
R_{free} test set	1390 reflections (5.11%)	wwPDB-VP
Wilson B-factor (Å ²)	132.4	Xtrriage
Anisotropy	0.213	Xtrriage
Bulk solvent k_{sol} (e/Å ³), B_{sol} (Å ²)	0.26 , 45.0	EDS
L-test for twinning ²	$\langle L \rangle = 0.48$, $\langle L^2 \rangle = 0.31$	Xtrriage
Estimated twinning fraction	No twinning to report.	Xtrriage
F_o, F_c correlation	0.81	EDS
Total number of atoms	7663	wwPDB-VP
Average B, all atoms (Å ²)	102.0	wwPDB-VP

Xtrriage's analysis on translational NCS is as follows: *The largest off-origin peak in the Patterson function is 2.92% of the height of the origin peak. No significant pseudotranslation is detected.*

¹Intensities estimated from amplitudes.

²Theoretical values of $\langle |L| \rangle$, $\langle L^2 \rangle$ for acentric reflections are 0.5, 0.333 respectively for untwinned datasets, and 0.375, 0.2 for perfectly twinned datasets.

5 Model quality i

5.1 Standard geometry i

Bond lengths and bond angles in the following residue types are not validated in this section: CPF

The Z score for a bond length (or angle) is the number of standard deviations the observed value is removed from the expected value. A bond length (or angle) with $|Z| > 5$ is considered an outlier worth inspection. RMSZ is the root-mean-square of all Z scores of the bond lengths (or angles).

Mol	Chain	Bond lengths		Bond angles	
		RMSZ	# Z >5	RMSZ	# Z >5
1	A	0.34	0/7779	0.70	34/10563 (0.3%)

Chiral center outliers are detected by calculating the chiral volume of a chiral center and verifying if the center is modelled as a planar moiety or with the opposite hand. A planarity outlier is detected by checking planarity of atoms in a peptide group, atoms in a mainchain group or atoms of a sidechain that are expected to be planar.

Mol	Chain	#Chirality outliers	#Planarity outliers
1	A	1	0

There are no bond length outliers.

All (34) bond angle outliers are listed below:

Mol	Chain	Res	Type	Atoms	Z	Observed(°)	Ideal(°)
1	A	407	ASP	CB-CG-OD2	6.62	124.26	118.30
1	A	795	ASP	CB-CG-OD2	6.22	123.90	118.30
1	A	470	PHE	N-CA-C	6.18	127.69	111.00
1	A	568	ASP	CB-CG-OD2	6.07	123.77	118.30
1	A	858	ASP	CB-CG-OD2	5.92	123.63	118.30
1	A	59	ASP	CB-CG-OD2	5.68	123.42	118.30
1	A	174	ASP	CB-CG-OD2	5.66	123.39	118.30
1	A	924	ASP	CB-CG-OD2	5.54	123.29	118.30
1	A	7	ASP	CB-CG-OD2	5.42	123.18	118.30
1	A	146	ASP	CB-CG-OD2	5.38	123.14	118.30
1	A	730	ASP	CB-CG-OD2	5.36	123.13	118.30
1	A	408	ASP	CB-CG-OD2	5.34	123.10	118.30
1	A	276	ASP	CB-CG-OD2	5.31	123.08	118.30
1	A	101	ASP	CB-CG-OD2	5.30	123.07	118.30
1	A	732	ASP	CB-CG-OD2	5.29	123.06	118.30
1	A	660	ASP	CB-CG-OD2	5.28	123.05	118.30

Continued on next page...

Continued from previous page...

Mol	Chain	Res	Type	Atoms	Z	Observed(°)	Ideal(°)
1	A	785	ASP	CB-CG-OD2	5.26	123.04	118.30
1	A	83	ASP	CB-CG-OD2	5.25	123.03	118.30
1	A	784	ASP	CB-CG-OD2	5.23	123.01	118.30
1	A	566	ASP	CB-CG-OD2	5.23	123.00	118.30
1	A	764	ASP	CB-CG-OD2	5.23	123.00	118.30
1	A	202	ASP	CB-CG-OD2	5.20	122.98	118.30
1	A	966	ASP	CB-CG-OD2	5.20	122.98	118.30
1	A	723	ASP	CB-CG-OD2	5.18	122.96	118.30
1	A	636	ASP	CB-CG-OD2	5.17	122.95	118.30
1	A	53	ASP	CB-CG-OD2	5.15	122.93	118.30
1	A	256	ASP	CB-CG-OD2	5.14	122.93	118.30
1	A	153	ASP	CB-CG-OD2	5.13	122.92	118.30
1	A	745	ASP	CB-CG-OD2	5.13	122.92	118.30
1	A	633	ASP	CB-CG-OD2	5.09	122.88	118.30
1	A	264	ASP	CB-CG-OD2	5.08	122.87	118.30
1	A	301	ASP	CB-CG-OD2	5.05	122.85	118.30
1	A	73	ASP	CB-CG-OD2	5.03	122.83	118.30
1	A	954	ASP	CB-CG-OD2	5.00	122.80	118.30

All (1) chirality outliers are listed below:

Mol	Chain	Res	Type	Atom
1	A	470	PHE	CA

There are no planarity outliers.

5.2 Too-close contacts [\(i\)](#)

In the following table, the Non-H and H(model) columns list the number of non-hydrogen atoms and hydrogen atoms in the chain respectively. The H(added) column lists the number of hydrogen atoms added and optimized by MolProbity. The Clashes column lists the number of clashes within the asymmetric unit, whereas Symm-Clashes lists symmetry-related clashes.

Mol	Chain	Non-H	H(model)	H(added)	Clashes	Symm-Clashes
1	A	7639	0	7800	172	1
2	A	24	0	17	0	0
All	All	7663	0	7817	172	1

The all-atom clashscore is defined as the number of clashes found per 1000 atoms (including hydrogen atoms). The all-atom clashscore for this structure is 11.

All (172) close contacts within the same asymmetric unit are listed below, sorted by their clash

magnitude.

Atom-1	Atom-2	Interatomic distance (Å)	Clash overlap (Å)
1:A:613:ASN:HD22	1:A:613:ASN:C	1.76	0.89
1:A:1022:VAL:HG22	1:A:1023:PRO:HD2	1.63	0.79
1:A:1023:PRO:HA	1:A:1026:PHE:HB2	1.67	0.76
1:A:448:VAL:HG11	1:A:888:LEU:HD23	1.68	0.75
1:A:393:LEU:HD11	1:A:466:ILE:HA	1.75	0.69
1:A:375:VAL:HG11	1:A:405:LEU:HD22	1.75	0.69
1:A:354:VAL:HG13	1:A:980:LEU:HD23	1.76	0.68
1:A:910:ILE:HG23	1:A:1013:THR:HG21	1.75	0.68
1:A:596:HIS:O	1:A:600:THR:HG22	1.95	0.66
1:A:343:THR:HG21	1:A:989:LEU:HD21	1.79	0.65
1:A:1015:THR:O	1:A:1019:ILE:HG22	1.97	0.65
1:A:613:ASN:C	1:A:613:ASN:ND2	2.49	0.63
1:A:979:SER:O	1:A:983:ILE:HG13	1.99	0.62
1:A:670:ALA:O	1:A:671:ILE:O	2.16	0.62
1:A:370:ILE:HG22	1:A:370:ILE:O	2.00	0.62
1:A:1018:ALA:HB1	1:A:1024:VAL:HG21	1.82	0.61
1:A:888:LEU:HD11	1:A:901:VAL:HB	1.83	0.59
1:A:888:LEU:HD12	1:A:898:PRO:HA	1.84	0.59
1:A:367:ILE:HG23	1:A:492:LEU:HD13	1.84	0.59
1:A:982:PHE:CD2	1:A:1011:MET:HG3	2.37	0.59
1:A:403:GLY:HA3	1:A:982:PHE:CD1	2.37	0.59
1:A:351:VAL:HG23	1:A:981:ALA:HB1	1.84	0.59
1:A:466:ILE:H	1:A:466:ILE:HD12	1.66	0.59
1:A:454:VAL:N	1:A:455:PRO:HD2	2.18	0.59
1:A:475:VAL:HG22	1:A:478:MET:CE	2.32	0.59
1:A:575:MET:HB3	1:A:626:ILE:HD12	1.85	0.58
1:A:968:VAL:HB	1:A:1025:PHE:HZ	1.67	0.58
1:A:218:GLN:HE21	1:A:231:ASN:HD21	1.51	0.58
1:A:475:VAL:HG22	1:A:478:MET:HE1	1.85	0.58
1:A:112:GLN:HG2	1:A:112:GLN:O	2.03	0.57
1:A:390:ILE:HG23	1:A:395:MET:SD	2.44	0.57
1:A:291:ILE:HG21	1:A:306:ILE:HD11	1.86	0.56
1:A:359:LEU:HD13	1:A:364:ALA:HB1	1.86	0.56
1:A:613:ASN:HD22	1:A:614:GLY:N	2.03	0.56
1:A:372:VAL:N	1:A:373:PRO:HD2	2.21	0.56
1:A:108:GLN:HB2	1:A:129:VAL:HG21	1.89	0.54
1:A:399:VAL:HA	1:A:402:ILE:HD12	1.87	0.54
1:A:716:VAL:HG12	1:A:829:GLY:HA3	1.89	0.53
1:A:903:LEU:O	1:A:906:PRO:HD2	2.08	0.53
1:A:527:TYR:OH	1:A:1019:ILE:O	2.24	0.53
1:A:897:ILE:HG23	1:A:946:VAL:HG11	1.91	0.53

Continued on next page...

Continued from previous page...

Atom-1	Atom-2	Interatomic distance (Å)	Clash overlap (Å)
1:A:1018:ALA:CB	1:A:1024:VAL:HG21	2.39	0.53
1:A:1023:PRO:HB3	1:A:1027:VAL:HG13	1.92	0.52
1:A:709:HIS:CG	1:A:709:HIS:O	2.62	0.52
1:A:403:GLY:HA3	1:A:982:PHE:CE1	2.45	0.52
1:A:30:LEU:HD23	1:A:390:ILE:HG13	1.91	0.52
1:A:468:ARG:O	1:A:472:ILE:HG22	2.09	0.52
1:A:684:LEU:HD11	1:A:855:VAL:HG13	1.92	0.52
1:A:9:PRO:C	1:A:10:ILE:HD13	2.31	0.52
1:A:905:VAL:HB	1:A:906:PRO:HD3	1.92	0.51
1:A:343:THR:CG2	1:A:989:LEU:HD21	2.40	0.51
1:A:401:ALA:O	1:A:405:LEU:HG	2.11	0.51
1:A:489:THR:HB	1:A:490:PRO:HD3	1.93	0.51
1:A:546:LEU:O	1:A:550:VAL:HG23	2.10	0.51
1:A:721:LEU:HD22	1:A:825:MET:CE	2.41	0.50
1:A:326:PRO:O	1:A:327:TYR:C	2.48	0.50
1:A:172:VAL:HG13	1:A:291:ILE:HG23	1.94	0.50
1:A:525:HIS:O	1:A:527:TYR:N	2.43	0.50
1:A:695:LEU:HD22	1:A:825:MET:SD	2.51	0.50
1:A:402:ILE:HA	1:A:405:LEU:HD12	1.93	0.50
1:A:344:LEU:HD23	1:A:402:ILE:HD11	1.92	0.50
1:A:373:PRO:O	1:A:377:LEU:HG	2.12	0.49
1:A:468:ARG:HG2	1:A:469:GLN:N	2.27	0.49
1:A:979:SER:HB2	1:A:1015:THR:HG21	1.94	0.49
1:A:10:ILE:HG12	1:A:11:PHE:CD2	2.45	0.49
1:A:454:VAL:HG22	1:A:475:VAL:HG21	1.93	0.49
1:A:907:LEU:O	1:A:1013:THR:HG22	2.12	0.49
1:A:399:VAL:HG11	1:A:989:LEU:HD11	1.93	0.49
1:A:971:ARG:HD2	1:A:971:ARG:C	2.33	0.49
1:A:300:LEU:HD22	1:A:333:VAL:HG11	1.94	0.49
1:A:365:THR:O	1:A:365:THR:HG23	2.12	0.49
1:A:456:MET:HA	1:A:876:LEU:HB3	1.95	0.49
1:A:904:VAL:HG13	1:A:1024:VAL:HG22	1.95	0.49
1:A:294:ALA:O	1:A:295:THR:C	2.51	0.49
1:A:466:ILE:HG23	1:A:925:VAL:HG21	1.94	0.49
1:A:897:ILE:N	1:A:898:PRO:CD	2.76	0.49
1:A:401:ALA:HB2	1:A:474:ILE:HG12	1.95	0.48
1:A:407:ASP:O	1:A:411:VAL:HG23	2.13	0.48
1:A:92:LEU:HD22	1:A:107:VAL:HG23	1.95	0.48
1:A:211:ASN:HA	1:A:240:LEU:HD23	1.94	0.48
1:A:595:THR:HG22	1:A:599:LEU:HD12	1.96	0.48
1:A:894:SER:O	1:A:895:TRP:HB2	2.14	0.48

Continued on next page...

Continued from previous page...

Atom-1	Atom-2	Interatomic distance (Å)	Clash overlap (Å)
1:A:143:ILE:HG22	1:A:286:ALA:CB	2.43	0.47
1:A:967:ALA:O	1:A:971:ARG:HG3	2.14	0.47
1:A:945:ILE:HA	1:A:971:ARG:NH1	2.29	0.47
1:A:426:PRO:N	1:A:427:PRO:HD2	2.29	0.47
1:A:425:LEU:C	1:A:427:PRO:HD2	2.35	0.47
1:A:1022:VAL:CG2	1:A:1023:PRO:HD2	2.39	0.47
1:A:482:VAL:O	1:A:486:LEU:HG	2.15	0.47
1:A:721:LEU:HD22	1:A:825:MET:HE2	1.95	0.47
1:A:90:ILE:N	1:A:90:ILE:HD12	2.29	0.47
1:A:664:PHE:O	1:A:665:ALA:HB2	2.15	0.47
1:A:744:ASN:O	1:A:748:THR:HG22	2.16	0.46
1:A:905:VAL:HG13	1:A:935:ILE:HG12	1.96	0.46
1:A:405:LEU:HD23	1:A:481:SER:HB3	1.96	0.46
1:A:434:SER:O	1:A:438:ILE:HG13	2.15	0.46
1:A:448:VAL:CG1	1:A:888:LEU:HD23	2.43	0.46
1:A:493:CYS:O	1:A:497:LEU:HB2	2.16	0.46
1:A:405:LEU:HD21	1:A:477:ALA:HB1	1.96	0.46
1:A:466:ILE:CG2	1:A:925:VAL:HG21	2.46	0.46
1:A:222:THR:HB	1:A:223:PRO:HD3	1.98	0.46
1:A:278:ILE:HG13	1:A:613:ASN:HB3	1.98	0.46
1:A:851:LEU:HB3	1:A:852:PRO:CD	2.46	0.46
1:A:1024:VAL:O	1:A:1025:PHE:CG	2.69	0.46
1:A:200:PRO:HD2	1:A:749:THR:HG23	1.98	0.46
1:A:247:GLY:HA2	1:A:268:ILE:HD12	1.97	0.46
1:A:281:PHE:CZ	1:A:324:VAL:HG21	2.51	0.46
1:A:472:ILE:HA	1:A:475:VAL:HB	1.97	0.45
1:A:892:TYR:HB3	1:A:897:ILE:HD13	1.98	0.45
1:A:907:LEU:HG	1:A:1017:LEU:HD23	1.98	0.45
1:A:1022:VAL:O	1:A:1023:PRO:O	2.34	0.45
1:A:453:PHE:HE2	1:A:474:ILE:HB	1.82	0.45
1:A:60:THR:HG23	1:A:61:VAL:HG23	1.98	0.45
1:A:92:LEU:HD13	1:A:107:VAL:HG21	1.99	0.45
1:A:545:TYR:HA	1:A:548:ILE:HD12	1.99	0.45
1:A:855:VAL:HG12	1:A:855:VAL:O	2.17	0.44
1:A:68:ASN:HD22	1:A:110:LYS:HD2	1.82	0.44
1:A:403:GLY:HA3	1:A:982:PHE:HD1	1.81	0.44
1:A:262:LEU:HG	1:A:268:ILE:HD11	1.99	0.44
1:A:972:LEU:C	1:A:972:LEU:HD13	2.38	0.44
1:A:30:LEU:CD2	1:A:390:ILE:HG13	2.48	0.44
1:A:851:LEU:HB3	1:A:852:PRO:HD2	2.00	0.44
1:A:879:ILE:HA	1:A:882:ILE:HD12	2.00	0.44

Continued on next page...

Continued from previous page...

Atom-1	Atom-2	Interatomic distance (Å)	Clash overlap (Å)
1:A:94:PHE:CE2	1:A:103:ALA:HB1	2.53	0.43
1:A:444:GLY:HA2	1:A:891:LEU:HD23	2.00	0.43
1:A:531:VAL:O	1:A:534:ILE:HG12	2.18	0.43
1:A:919:ARG:HB3	1:A:921:LEU:HD23	2.00	0.43
1:A:929:VAL:HA	1:A:932:LEU:HD12	2.00	0.43
1:A:986:VAL:HG12	1:A:990:VAL:CG2	2.49	0.43
1:A:1033:PHE:O	1:A:1035:ARG:N	2.52	0.43
1:A:203:VAL:O	1:A:207:ILE:HG13	2.18	0.43
1:A:310:LEU:HD21	1:A:323:ILE:HD12	2.00	0.43
1:A:456:MET:O	1:A:876:LEU:HD13	2.19	0.43
1:A:1033:PHE:O	1:A:1034:SER:C	2.57	0.43
1:A:330:THR:HB	1:A:331:PRO:HD3	2.01	0.43
1:A:62:THR:OG1	1:A:88:VAL:HG21	2.19	0.43
1:A:782:LEU:HB3	1:A:783:PRO:HD2	2.01	0.43
1:A:31:PRO:HG2	1:A:389:SER:HB3	2.01	0.42
1:A:886:LEU:N	1:A:886:LEU:HD23	2.34	0.42
1:A:1003:VAL:O	1:A:1007:VAL:HG23	2.20	0.42
1:A:34:GLN:HG2	1:A:333:VAL:HG22	2.01	0.42
1:A:351:VAL:CG2	1:A:981:ALA:HB1	2.47	0.42
1:A:892:TYR:HB3	1:A:897:ILE:HG21	2.00	0.42
1:A:419:VAL:HG12	1:A:430:ALA:HB1	2.02	0.42
1:A:553:ALA:O	1:A:557:VAL:HG23	2.19	0.42
1:A:158:VAL:HG22	1:A:162:MET:CE	2.50	0.42
1:A:458:PHE:O	1:A:459:PHE:O	2.37	0.42
1:A:941:ASN:HD21	1:A:1015:THR:HG22	1.85	0.42
1:A:990:VAL:O	1:A:1001:ASN:ND2	2.53	0.41
1:A:1027:VAL:HG23	1:A:1028:VAL:H	1.85	0.41
1:A:133:SER:O	1:A:135:SER:N	2.54	0.41
1:A:398:MET:O	1:A:402:ILE:HG13	2.20	0.41
1:A:470:PHE:CD1	1:A:929:VAL:HG11	2.55	0.41
1:A:686:ASP:HB2	1:A:695:LEU:HD12	2.02	0.41
1:A:108:GLN:HB3	1:A:129:VAL:HG11	2.02	0.41
1:A:383:LEU:HD11	1:A:473:THR:HG23	2.03	0.41
1:A:466:ILE:HG22	1:A:467:TYR:N	2.36	0.41
1:A:676:THR:O	1:A:677:ALA:HB3	2.21	0.41
1:A:65:ILE:O	1:A:69:MET:HB2	2.21	0.41
1:A:254:ASN:O	1:A:256:ASP:N	2.54	0.41
1:A:419:VAL:CG1	1:A:430:ALA:HB1	2.51	0.41
1:A:574:THR:HG21	1:A:598:TYR:OH	2.21	0.41
1:A:207:ILE:HG22	1:A:211:ASN:HD22	1.86	0.41
1:A:905:VAL:HB	1:A:906:PRO:CD	2.51	0.41

Continued on next page...

Continued from previous page...

Atom-1	Atom-2	Interatomic distance (Å)	Clash overlap (Å)
1:A:370:ILE:O	1:A:370:ILE:CG2	2.69	0.40
1:A:709:HIS:O	1:A:709:HIS:CD2	2.75	0.40
1:A:390:ILE:O	1:A:390:ILE:HG22	2.21	0.40
1:A:580:ALA:HB1	1:A:724:THR:HG22	2.04	0.40
1:A:968:VAL:HG22	1:A:972:LEU:HB2	2.03	0.40
1:A:469:GLN:HA	1:A:472:ILE:HG23	2.02	0.40
1:A:355:MET:HA	1:A:355:MET:HE2	2.04	0.40
1:A:9:PRO:HB3	1:A:495:THR:OG1	2.21	0.40

All (1) symmetry-related close contacts are listed below. The label for Atom-2 includes the symmetry operator and encoded unit-cell translations to be applied.

Atom-1	Atom-2	Interatomic distance (Å)	Clash overlap (Å)
1:A:226:LYS:O	1:A:596:HIS:NE2[12_455]	2.06	0.14

5.3 Torsion angles [i](#)

5.3.1 Protein backbone [i](#)

In the following table, the Percentiles column shows the percent Ramachandran outliers of the chain as a percentile score with respect to all X-ray entries followed by that with respect to entries of similar resolution.

The Analysed column shows the number of residues for which the backbone conformation was analysed, and the total number of residues.

Mol	Chain	Analysed	Favoured	Allowed	Outliers	Percentiles
1	A	998/1049 (95%)	788 (79%)	141 (14%)	69 (7%)	1 11

All (69) Ramachandran outliers are listed below:

Mol	Chain	Res	Type
1	A	10	ILE
1	A	255	GLN
1	A	459	PHE
1	A	466	ILE
1	A	526	HIS
1	A	665	ALA
1	A	671	ILE
1	A	714	THR

Continued on next page...

Continued from previous page...

Mol	Chain	Res	Type
1	A	794	ALA
1	A	901	VAL
1	A	1017	LEU
1	A	1021	PHE
1	A	1023	PRO
1	A	1025	PHE
1	A	1034	SER
1	A	9	PRO
1	A	134	SER
1	A	135	SER
1	A	152	GLU
1	A	161	ASN
1	A	169	THR
1	A	295	THR
1	A	327	TYR
1	A	427	PRO
1	A	431	THR
1	A	464	GLY
1	A	468	ARG
1	A	521	GLU
1	A	775	SER
1	A	872	GLN
1	A	894	SER
1	A	900	SER
1	A	940	LYS
1	A	955	LYS
1	A	1027	VAL
1	A	34	GLN
1	A	74	ASN
1	A	110	LYS
1	A	209	ALA
1	A	366	LEU
1	A	421	ALA
1	A	495	THR
1	A	720	GLY
1	A	889	ALA
1	A	895	TRP
1	A	22	ALA
1	A	184	MET
1	A	299	ALA
1	A	522	LYS
1	A	538	THR

Continued on next page...

Continued from previous page...

Mol	Chain	Res	Type
1	A	638	PRO
1	A	722	GLU
1	A	723	ASP
1	A	971	ARG
1	A	992	SER
1	A	35	TYR
1	A	133	SER
1	A	677	ALA
1	A	837	THR
1	A	197	GLN
1	A	552	MET
1	A	571	VAL
1	A	330	THR
1	A	223	PRO
1	A	490	PRO
1	A	669	PRO
1	A	796	GLY
1	A	217	GLY
1	A	991	ILE

5.3.2 Protein sidechains [i](#)

In the following table, the Percentiles column shows the percent sidechain outliers of the chain as a percentile score with respect to all X-ray entries followed by that with respect to entries of similar resolution.

The Analysed column shows the number of residues for which the sidechain conformation was analysed, and the total number of residues.

Mol	Chain	Analysed	Rotameric	Outliers	Percentiles
1	A	818/855 (96%)	640 (78%)	178 (22%)	1 4

All (178) residues with a non-rotameric sidechain are listed below:

Mol	Chain	Res	Type
1	A	7	ASP
1	A	10	ILE
1	A	25	LEU
1	A	27	ILE
1	A	29	LYS
1	A	30	LEU
1	A	32	VAL

Continued on next page...

Continued from previous page...

Mol	Chain	Res	Type
1	A	35	TYR
1	A	38	ILE
1	A	46	SER
1	A	48	SER
1	A	55	LYS
1	A	58	GLN
1	A	67	GLN
1	A	68	ASN
1	A	75	LEU
1	A	76	MET
1	A	80	SER
1	A	82	SER
1	A	87	THR
1	A	107	VAL
1	A	108	GLN
1	A	110	LYS
1	A	112	GLN
1	A	115	MET
1	A	117	LEU
1	A	122	VAL
1	A	125	GLN
1	A	127	VAL
1	A	130	GLU
1	A	132	SER
1	A	135	SER
1	A	137	LEU
1	A	138	MET
1	A	149	MET
1	A	156	ASP
1	A	164	ASP
1	A	166	ILE
1	A	182	TYR
1	A	185	ARG
1	A	195	LYS
1	A	199	THR
1	A	225	VAL
1	A	226	LYS
1	A	230	LEU
1	A	239	ARG
1	A	242	SER
1	A	243	THR
1	A	253	VAL

Continued on next page...

Continued from previous page...

Mol	Chain	Res	Type
1	A	255	GLN
1	A	259	ARG
1	A	263	ARG
1	A	270	LEU
1	A	278	ILE
1	A	284	GLN
1	A	293	LEU
1	A	313	MET
1	A	319	SER
1	A	321	LEU
1	A	322	LYS
1	A	323	ILE
1	A	327	TYR
1	A	334	LYS
1	A	342	LYS
1	A	350	LEU
1	A	351	VAL
1	A	355	MET
1	A	357	LEU
1	A	360	GLN
1	A	366	LEU
1	A	389	SER
1	A	404	LEU
1	A	406	VAL
1	A	414	GLU
1	A	415	ASN
1	A	417	GLU
1	A	418	ARG
1	A	422	GLU
1	A	431	THR
1	A	433	LYS
1	A	439	GLN
1	A	445	ILE
1	A	448	VAL
1	A	453	PHE
1	A	456	MET
1	A	462	SER
1	A	468	ARG
1	A	470	PHE
1	A	471	SER
1	A	472	ILE
1	A	476	SER

Continued on next page...

Continued from previous page...

Mol	Chain	Res	Type
1	A	478	MET
1	A	492	LEU
1	A	498	LYS
1	A	519	MET
1	A	537	SER
1	A	552	MET
1	A	555	LEU
1	A	558	ARG
1	A	574	THR
1	A	585	GLU
1	A	591	LEU
1	A	602	GLU
1	A	605	ASN
1	A	608	SER
1	A	609	VAL
1	A	613	ASN
1	A	617	PHE
1	A	634	TRP
1	A	640	GLU
1	A	643	LYS
1	A	645	GLU
1	A	650	ARG
1	A	659	LYS
1	A	671	ILE
1	A	683	GLU
1	A	686	ASP
1	A	692	HIS
1	A	693	GLU
1	A	694	LYS
1	A	699	ARG
1	A	708	LYS
1	A	714	THR
1	A	715	SER
1	A	731	ILE
1	A	734	GLU
1	A	737	GLN
1	A	739	LEU
1	A	741	VAL
1	A	742	SER
1	A	748	THR
1	A	749	THR
1	A	765	ARG

Continued on next page...

Continued from previous page...

Mol	Chain	Res	Type
1	A	774	MET
1	A	782	LEU
1	A	797	GLN
1	A	798	MET
1	A	801	PHE
1	A	804	PHE
1	A	807	SER
1	A	811	TYR
1	A	813	SER
1	A	824	SER
1	A	842	GLU
1	A	844	MET
1	A	846	GLN
1	A	855	VAL
1	A	872	GLN
1	A	886	LEU
1	A	888	LEU
1	A	895	TRP
1	A	904	VAL
1	A	905	VAL
1	A	907	LEU
1	A	914	LEU
1	A	919	ARG
1	A	921	LEU
1	A	925	VAL
1	A	938	SER
1	A	940	LYS
1	A	945	ILE
1	A	950	LYS
1	A	958	LYS
1	A	971	ARG
1	A	972	LEU
1	A	973	ARG
1	A	976	LEU
1	A	983	ILE
1	A	991	ILE
1	A	1008	MET
1	A	1020	PHE
1	A	1022	VAL
1	A	1028	VAL
1	A	1030	ARG
1	A	1031	ARG

Continued on next page...

Continued from previous page...

Mol	Chain	Res	Type
1	A	1032	ARG
1	A	1035	ARG
1	A	1036	LYS

Sometimes sidechains can be flipped to improve hydrogen bonding and reduce clashes. All (12) such sidechains are listed below:

Mol	Chain	Res	Type
1	A	68	ASN
1	A	124	GLN
1	A	181	GLN
1	A	194	ASN
1	A	218	GLN
1	A	228	GLN
1	A	284	GLN
1	A	605	ASN
1	A	613	ASN
1	A	622	GLN
1	A	667	ASN
1	A	760	ASN

5.3.3 RNA [i](#)

There are no RNA molecules in this entry.

5.4 Non-standard residues in protein, DNA, RNA chains [i](#)

There are no non-standard protein/DNA/RNA residues in this entry.

5.5 Carbohydrates [i](#)

There are no monosaccharides in this entry.

5.6 Ligand geometry [i](#)

1 ligand is modelled in this entry.

In the following table, the Counts columns list the number of bonds (or angles) for which Mogul statistics could be retrieved, the number of bonds (or angles) that are observed in the model and the number of bonds (or angles) that are defined in the Chemical Component Dictionary. The

Link column lists molecule types, if any, to which the group is linked. The Z score for a bond length (or angle) is the number of standard deviations the observed value is removed from the expected value. A bond length (or angle) with $|Z| > 2$ is considered an outlier worth inspection. RMSZ is the root-mean-square of all Z scores of the bond lengths (or angles).

Mol	Type	Chain	Res	Link	Bond lengths			Bond angles		
					Counts	RMSZ	# Z > 2	Counts	RMSZ	# Z > 2
2	CPF	A	5001	-	27,27,27	0.95	2 (7%)	40,40,40	0.80	1 (2%)

In the following table, the Chirals column lists the number of chiral outliers, the number of chiral centers analysed, the number of these observed in the model and the number defined in the Chemical Component Dictionary. Similar counts are reported in the Torsion and Rings columns. '-' means no outliers of that kind were identified.

Mol	Type	Chain	Res	Link	Chirals	Torsions	Rings
2	CPF	A	5001	-	-	2/12/22/22	0/4/4/4

All (2) bond length outliers are listed below:

Mol	Chain	Res	Type	Atoms	Z	Observed(Å)	Ideal(Å)
2	A	5001	CPF	O2-C3	-2.36	1.24	1.30
2	A	5001	CPF	O3-C4	2.07	1.27	1.23

All (1) bond angle outliers are listed below:

Mol	Chain	Res	Type	Atoms	Z	Observed(°)	Ideal(°)
2	A	5001	CPF	O3-C4-C5	-2.07	118.26	121.57

There are no chirality outliers.

All (2) torsion outliers are listed below:

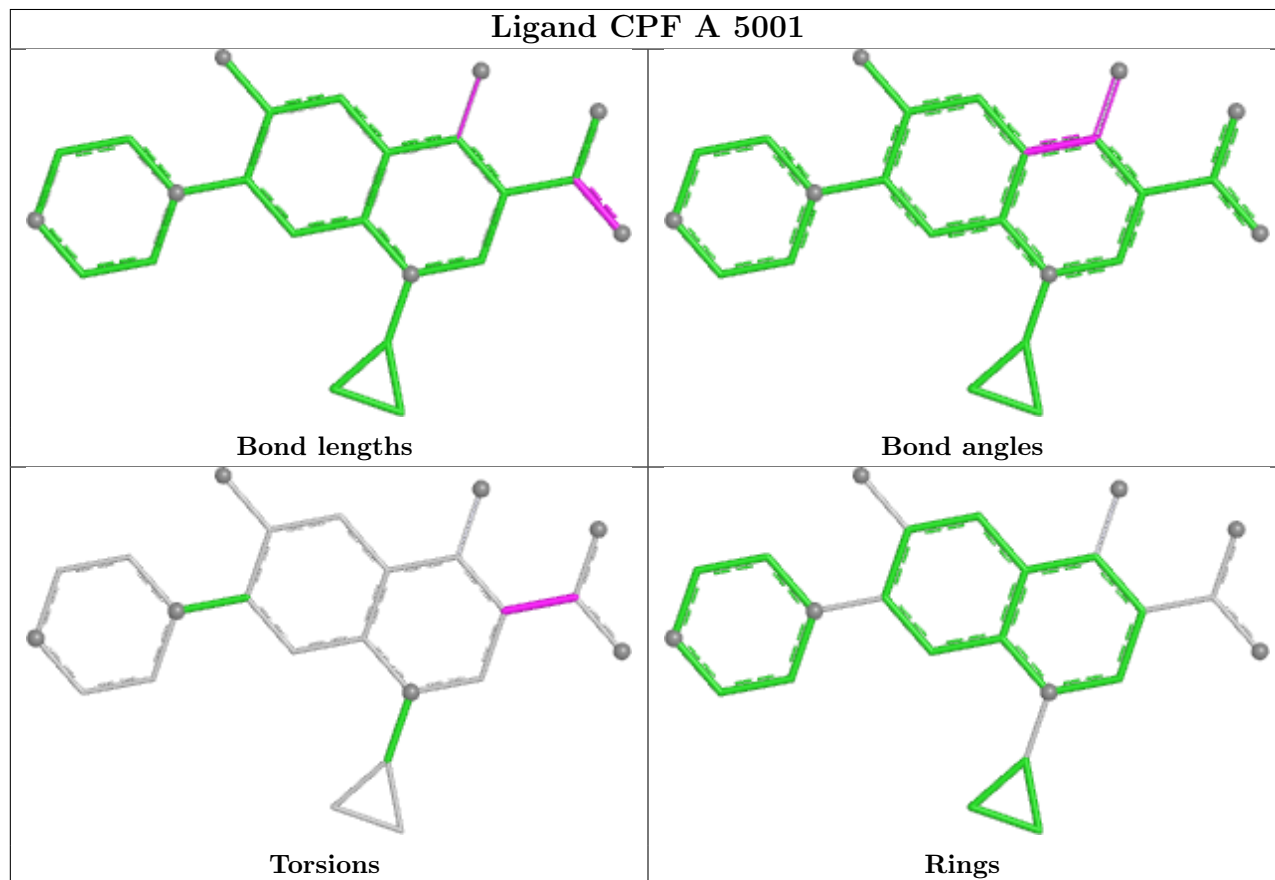
Mol	Chain	Res	Type	Atoms
2	A	5001	CPF	C4-C2-C3-O2
2	A	5001	CPF	C4-C2-C3-O1

There are no ring outliers.

No monomer is involved in short contacts.

The following is a two-dimensional graphical depiction of Mogul quality analysis of bond lengths, bond angles, torsion angles, and ring geometry for all instances of the Ligand of Interest. In addition, ligands with molecular weight > 250 and outliers as shown on the validation Tables will also be included. For torsion angles, if less than 5% of the Mogul distribution of torsion angles is within 10 degrees of the torsion angle in question, then that torsion angle is considered an outlier.

Any bond that is central to one or more torsion angles identified as an outlier by Mogul will be highlighted in the graph. For rings, the root-mean-square deviation (RMSD) between the ring in question and similar rings identified by Mogul is calculated over all ring torsion angles. If the average RMSD is greater than 60 degrees and the minimal RMSD between the ring in question and any Mogul-identified rings is also greater than 60 degrees, then that ring is considered an outlier. The outliers are highlighted in purple. The color gray indicates Mogul did not find sufficient equivalents in the CSD to analyse the geometry.



5.7 Other polymers [i](#)

There are no such residues in this entry.

5.8 Polymer linkage issues [i](#)

There are no chain breaks in this entry.

6 Fit of model and data

6.1 Protein, DNA and RNA chains

Unable to reproduce the depositors R factor - this section is therefore empty.

6.2 Non-standard residues in protein, DNA, RNA chains

Unable to reproduce the depositors R factor - this section is therefore empty.

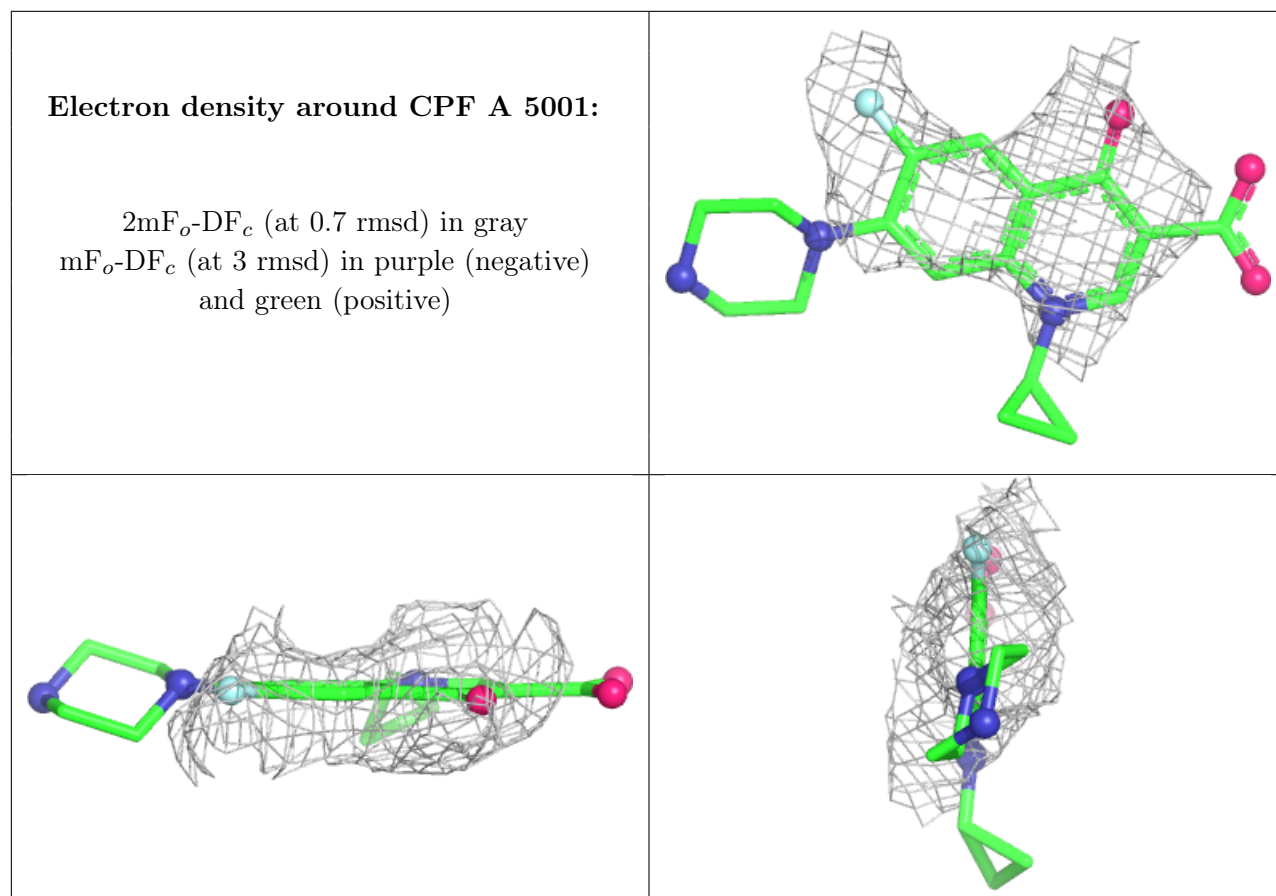
6.3 Carbohydrates

Unable to reproduce the depositors R factor - this section is therefore empty.

6.4 Ligands

Unable to reproduce the depositors R factor - this section is therefore empty.

The following is a graphical depiction of the model fit to experimental electron density of all instances of the Ligand of Interest. In addition, ligands with molecular weight > 250 and outliers as shown on the geometry validation Tables will also be included. Each fit is shown from different orientation to approximate a three-dimensional view.



6.5 Other polymers [i](#)

Unable to reproduce the depositors R factor - this section is therefore empty.