



# Full wwPDB X-ray Structure Validation Report ⓘ

Aug 7, 2023 – 10:20 PM EDT

PDB ID : 1OMZ  
Title : crystal structure of mouse alpha-1,4-N-acetylhexosaminyltransferase (EXTL2) in complex with UDPGalNAc  
Authors : Pedersen, L.C.; Dong, J.; Taniguchi, F.; Kitagawa, H.; Krahn, J.M.; Pedersen, L.G.; Sugahara, K.; Negishi, M.  
Deposited on : 2003-02-26  
Resolution : 2.10 Å(reported)

This is a Full wwPDB X-ray Structure Validation Report for a publicly released PDB entry.

We welcome your comments at [validation@mail.wwpdb.org](mailto:validation@mail.wwpdb.org)

A user guide is available at

<https://www.wwpdb.org/validation/2017/XrayValidationReportHelp>

with specific help available everywhere you see the ⓘ symbol.

The types of validation reports are described at

<http://www.wwpdb.org/validation/2017/FAQs#types>.

---

The following versions of software and data (see [references ⓘ](#)) were used in the production of this report:

MolProbity : 4.02b-467  
Mogul : 1.8.5 (274361), CSD as541be (2020)  
Xtriage (Phenix) : 1.13  
EDS : 2.35  
buster-report : 1.1.7 (2018)  
Percentile statistics : 20191225.v01 (using entries in the PDB archive December 25th 2019)  
Refmac : 5.8.0158  
CCP4 : 7.0.044 (Gargrove)  
Ideal geometry (proteins) : Engh & Huber (2001)  
Ideal geometry (DNA, RNA) : Parkinson et al. (1996)  
Validation Pipeline (wwPDB-VP) : 2.35

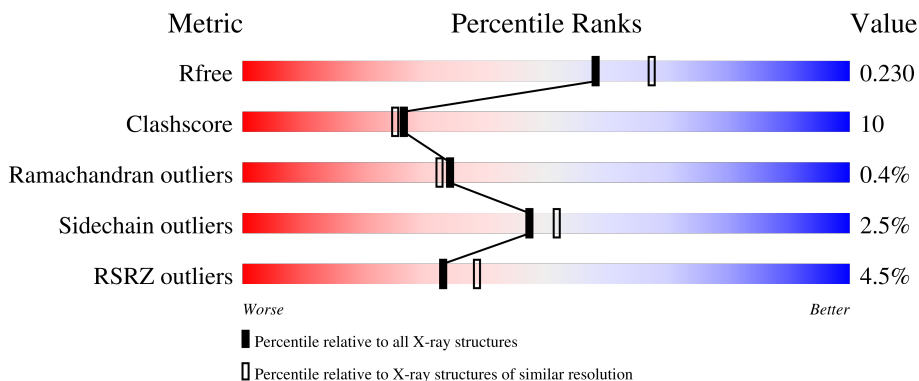
# 1 Overall quality at a glance

The following experimental techniques were used to determine the structure:

*X-RAY DIFFRACTION*

The reported resolution of this entry is 2.10 Å.

Percentile scores (ranging between 0-100) for global validation metrics of the entry are shown in the following graphic. The table shows the number of entries on which the scores are based.



Metric	Whole archive (#Entries)	Similar resolution (#Entries, resolution range(Å))
$R_{free}$	130704	5197 (2.10-2.10)
Clashscore	141614	5710 (2.10-2.10)
Ramachandran outliers	138981	5647 (2.10-2.10)
Sidechain outliers	138945	5648 (2.10-2.10)
RSRZ outliers	127900	5083 (2.10-2.10)

The table below summarises the geometric issues observed across the polymeric chains and their fit to the electron density. The red, orange, yellow and green segments of the lower bar indicate the fraction of residues that contain outliers for  $\geq 3$ , 2, 1 and 0 types of geometric quality criteria respectively. A grey segment represents the fraction of residues that are not modelled. The numeric value for each fraction is indicated below the corresponding segment, with a dot representing fractions  $\leq 5\%$ . The upper red bar (where present) indicates the fraction of residues that have poor fit to the electron density. The numeric value is given above the bar.

Mol	Chain	Length	Quality of chain
1	A	293	
1	B	293	

The following table lists non-polymeric compounds, carbohydrate monomers and non-standard residues in protein, DNA, RNA chains that are outliers for geometric or electron-density-fit criteria:

Mol	Type	Chain	Res	Chirality	Geometry	Clashes	Electron density
4	EDO	A	401	-	X	-	-

## 2 Entry composition [i](#)

There are 5 unique types of molecules in this entry. The entry contains 4351 atoms, of which 0 are hydrogens and 0 are deuteriums.

In the tables below, the ZeroOcc column contains the number of atoms modelled with zero occupancy, the AltConf column contains the number of residues with at least one atom in alternate conformation and the Trace column contains the number of residues modelled with at most 2 atoms.

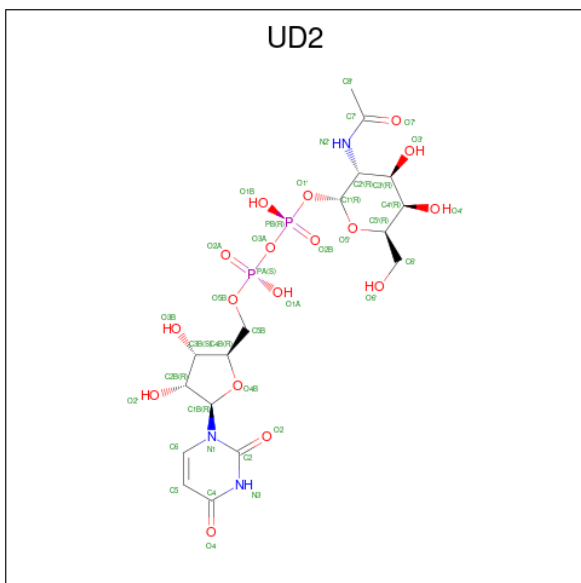
- Molecule 1 is a protein called Alpha-1,4-N-acetylhexosaminyltransferase EXTL2.

Mol	Chain	Residues	Atoms					ZeroOcc	AltConf	Trace
			Total	C	N	O	S			
1	A	253	Total 2012	1297	338	367	10	0	0	0
1	B	255	Total 2002	1295	338	359	10	0	0	0

- Molecule 2 is MANGANESE (II) ION (three-letter code: MN) (formula: Mn).

Mol	Chain	Residues	Atoms		ZeroOcc	AltConf
2	A	1	Total 1	Mn 1	0	0
2	B	1	Total 1	Mn 1	0	0

- Molecule 3 is URIDINE-DIPHOSPHATE-N-ACETYLGALACTOSAMINE (three-letter code: UD2) (formula: C<sub>17</sub>H<sub>27</sub>N<sub>3</sub>O<sub>17</sub>P<sub>2</sub>).



Mol	Chain	Residues	Atoms				ZeroOcc	AltConf	
3	A	1	Total	C	N	O	P	0	0
			39	17	3	17	2		
3	B	1	Total	C	N	O	P	0	0
			39	17	3	17	2		

- Molecule 4 is 1,2-ETHANEDIOL (three-letter code: EDO) (formula: C<sub>2</sub>H<sub>6</sub>O<sub>2</sub>).



Mol	Chain	Residues	Atoms		ZeroOcc	AltConf
4	A	1	Total	C O	0	0
			4	2 2		
4	B	1	Total	C O	0	0
			4	2 2		

- Molecule 5 is water.

Mol	Chain	Residues	Atoms		ZeroOcc	AltConf
5	A	132	Total	O	0	0
			132	132		
5	B	117	Total	O	0	0
			117	117		



## 4 Data and refinement statistics

Property	Value	Source
Space group	P 4 21 2	Depositor
Cell constants a, b, c, $\alpha$ , $\beta$ , $\gamma$	126.34Å 126.34Å 83.93Å 90.00° 90.00° 90.00°	Depositor
Resolution (Å)	19.88 – 2.10 19.88 – 2.10	Depositor EDS
% Data completeness (in resolution range)	96.9 (19.88-2.10) 97.1 (19.88-2.10)	Depositor EDS
$R_{merge}$	(Not available)	Depositor
$R_{sym}$	0.10	Depositor
$\langle I/\sigma(I) \rangle$ <sup>1</sup>	2.37 (at 2.09Å)	Xtrriage
Refinement program	CNS 1.0	Depositor
R, $R_{free}$	0.201 , 0.233 0.197 , 0.230	Depositor DCC
$R_{free}$ test set	1949 reflections (4.91%)	wwPDB-VP
Wilson B-factor (Å <sup>2</sup> )	24.7	Xtrriage
Anisotropy	0.024	Xtrriage
Bulk solvent $k_{sol}$ (e/Å <sup>3</sup> ), $B_{sol}$ (Å <sup>2</sup> )	0.36 , 60.9	EDS
L-test for twinning <sup>2</sup>	$\langle  L  \rangle = 0.49$ , $\langle L^2 \rangle = 0.32$	Xtrriage
Estimated twinning fraction	No twinning to report.	Xtrriage
$F_o, F_c$ correlation	0.94	EDS
Total number of atoms	4351	wwPDB-VP
Average B, all atoms (Å <sup>2</sup> )	28.0	wwPDB-VP

Xtrriage's analysis on translational NCS is as follows: *The largest off-origin peak in the Patterson function is 6.65% of the height of the origin peak. No significant pseudotranslation is detected.*

<sup>1</sup>Intensities estimated from amplitudes.

<sup>2</sup>Theoretical values of  $\langle |L| \rangle$ ,  $\langle L^2 \rangle$  for acentric reflections are 0.5, 0.333 respectively for untwinned datasets, and 0.375, 0.2 for perfectly twinned datasets.

## 5 Model quality

### 5.1 Standard geometry

Bond lengths and bond angles in the following residue types are not validated in this section: MN, EDO, UD2

The Z score for a bond length (or angle) is the number of standard deviations the observed value is removed from the expected value. A bond length (or angle) with  $|Z| > 5$  is considered an outlier worth inspection. RMSZ is the root-mean-square of all Z scores of the bond lengths (or angles).

Mol	Chain	Bond lengths		Bond angles	
		RMSZ	# Z  >5	RMSZ	# Z  >5
1	A	0.35	0/2065	0.60	0/2807
1	B	0.35	0/2056	0.57	0/2800
All	All	0.35	0/4121	0.58	0/5607

There are no bond length outliers.

There are no bond angle outliers.

There are no chirality outliers.

There are no planarity outliers.

### 5.2 Too-close contacts

In the following table, the Non-H and H(model) columns list the number of non-hydrogen atoms and hydrogen atoms in the chain respectively. The H(added) column lists the number of hydrogen atoms added and optimized by MolProbity. The Clashes column lists the number of clashes within the asymmetric unit, whereas Symm-Clashes lists symmetry-related clashes.

Mol	Chain	Non-H	H(model)	H(added)	Clashes	Symm-Clashes
1	A	2012	0	1970	42	0
1	B	2002	0	1946	39	0
2	A	1	0	0	0	0
2	B	1	0	0	0	0
3	A	39	0	25	2	0
3	B	39	0	25	1	0
4	A	4	0	6	0	0
4	B	4	0	6	0	0
5	A	132	0	0	3	0
5	B	117	0	0	3	0
All	All	4351	0	3978	83	0



The all-atom clashscore is defined as the number of clashes found per 1000 atoms (including hydrogen atoms). The all-atom clashscore for this structure is 10.

All (83) close contacts within the same asymmetric unit are listed below, sorted by their clash magnitude.

Atom-1	Atom-2	Interatomic distance (Å)	Clash overlap (Å)
1:B:236:ALA:O	1:B:240:GLU:HG2	1.71	0.90
1:A:133:ARG:HH12	1:A:235:HIS:HB3	1.36	0.89
1:A:201:PRO:O	1:A:203:PRO:HD2	1.81	0.81
1:A:288:GLU:O	1:A:292:GLN:HG3	1.84	0.75
1:B:226:LEU:HG	1:B:252:LEU:HD11	1.69	0.72
1:B:194:GLY:HA3	1:B:198:LEU:HD12	1.72	0.70
1:B:288:GLU:O	1:B:292:GLN:HG3	1.92	0.69
1:A:214:ILE:HG12	1:A:246:ASP:HB3	1.74	0.68
1:B:123:ILE:HD13	1:B:141:GLU:HG2	1.74	0.68
1:A:109:GLU:HG2	1:A:113:ASN:HD21	1.64	0.62
1:B:95:LYS:HD3	1:B:123:ILE:HD11	1.83	0.60
1:B:95:LYS:HD3	1:B:123:ILE:CD1	2.35	0.56
1:B:168:TRP:HA	1:B:176:ILE:HG13	1.87	0.56
1:A:66:SER:HB3	1:A:94:HIS:HB2	1.88	0.56
1:A:71:MET:CE	1:A:80:LEU:HD12	2.37	0.55
1:A:168:TRP:HA	1:A:176:ILE:HG13	1.88	0.55
1:B:297:ILE:O	1:B:301:VAL:HG23	2.07	0.54
1:A:146:ALA:HB2	1:A:168:TRP:CH2	2.42	0.54
1:B:171:PHE:N	1:B:172:PRO:HD3	2.21	0.54
1:A:227:PHE:HA	1:A:252:LEU:HD11	1.90	0.54
1:B:120:ILE:H	1:B:120:ILE:HD13	1.73	0.54
1:B:324:ALA:HA	1:B:326:HIS:CE1	2.43	0.53
1:A:71:MET:HE1	1:A:80:LEU:HD12	1.91	0.53
1:B:82:ARG:HD3	1:B:82:ARG:C	2.29	0.53
1:B:131:LYS:HA	1:B:242:GLN:HE22	1.74	0.53
1:A:227:PHE:HA	1:A:252:LEU:CD1	2.39	0.53
1:B:226:LEU:CG	1:B:252:LEU:HD11	2.39	0.53
1:A:146:ALA:HB2	1:A:168:TRP:CZ3	2.44	0.52
1:B:205:ASN:HD22	1:B:205:ASN:C	2.12	0.52
1:A:109:GLU:HG2	1:A:113:ASN:ND2	2.24	0.52
1:A:138:VAL:HG21	1:A:225:GLU:HG2	1.92	0.51
1:A:203:PRO:HB2	5:A:659:HOH:O	2.10	0.50
1:B:66:SER:HB3	1:B:94:HIS:HB2	1.93	0.50
1:A:297:ILE:O	1:A:301:VAL:HG23	2.12	0.50
1:A:123:ILE:HD13	1:A:141:GLU:HG2	1.93	0.50
1:B:214:ILE:HG12	1:B:246:ASP:HB3	1.93	0.49
1:A:238:ILE:HD12	1:A:245:ASP:HA	1.94	0.49

*Continued on next page...*

*Continued from previous page...*

Atom-1	Atom-2	Interatomic distance (Å)	Clash overlap (Å)
1:B:220:ASN:OD1	1:B:222:LYS:HG2	2.13	0.48
1:A:243:ASN:OD1	1:A:244:CYS:N	2.43	0.48
3:A:405:UD2:H5'2	3:A:405:UD2:H3'	1.95	0.48
1:B:123:ILE:HD11	5:B:674:HOH:O	2.13	0.48
1:A:194:GLY:HA3	1:A:198:LEU:HD12	1.94	0.48
1:A:234:VAL:O	1:A:238:ILE:HG12	2.13	0.48
1:A:120:ILE:H	1:A:120:ILE:HD13	1.80	0.46
1:B:243:ASN:OD1	1:B:244:CYS:N	2.46	0.46
1:B:146:ALA:HB2	1:B:168:TRP:CZ3	2.50	0.46
1:A:95:LYS:HD3	1:A:123:ILE:HD12	1.96	0.45
1:B:194:GLY:HA3	1:B:198:LEU:CD1	2.42	0.45
1:A:272:ASN:OD1	1:A:274:GLU:HG3	2.17	0.45
1:B:292:GLN:O	1:B:295:TYR:HB3	2.17	0.45
1:A:107:GLY:HA3	5:A:698:HOH:O	2.17	0.45
1:B:130:ASN:O	1:B:242:GLN:NE2	2.50	0.45
1:B:170:GLN:C	1:B:172:PRO:HD3	2.38	0.45
1:A:73:THR:HG21	1:A:80:LEU:HD22	1.98	0.44
1:B:230:GLN:NE2	1:B:252:LEU:HD13	2.32	0.44
1:A:252:LEU:C	1:A:252:LEU:HD23	2.38	0.44
1:A:125:LYS:HD3	1:A:139:PHE:CD2	2.52	0.44
1:A:132:MET:HE1	3:A:405:UD2:H4'	2.00	0.43
1:A:202:GLY:O	1:A:203:PRO:O	2.36	0.43
1:A:174:GLN:HG2	5:A:620:HOH:O	2.17	0.43
1:A:87:TYR:O	1:A:93:LEU:HD22	2.19	0.43
1:A:290:PHE:O	1:A:293:ARG:HB2	2.18	0.43
1:A:201:PRO:HG3	1:A:311:TYR:CE1	2.54	0.42
1:A:287:ALA:C	1:A:289:HIS:H	2.22	0.42
1:B:69:LEU:HD12	1:B:148:LEU:O	2.19	0.42
1:B:112:TRP:CZ2	1:B:122:VAL:HG21	2.54	0.42
1:B:155:LEU:C	1:B:155:LEU:HD12	2.39	0.42
1:B:226:LEU:CD2	1:B:252:LEU:HD11	2.50	0.42
1:B:86:HIS:CD2	1:B:155:LEU:CD1	3.03	0.42
1:A:85:ASN:HA	1:A:88:GLN:NE2	2.35	0.41
1:B:177:GLY:HA3	1:B:212:VAL:CG1	2.50	0.41
1:B:125:LYS:HD3	1:B:139:PHE:CD2	2.55	0.41
1:B:291:LEU:HD12	1:B:291:LEU:HA	1.87	0.41
1:B:272:ASN:ND2	5:B:602:HOH:O	2.54	0.41
1:B:150:VAL:HG12	1:B:151:ASP:O	2.20	0.41
1:A:95:LYS:HD3	1:A:123:ILE:CD1	2.50	0.41
1:B:101:ASN:HB3	1:B:130:ASN:OD1	2.21	0.41
1:A:91:PRO:O	1:A:92:SER:HB2	2.21	0.41

*Continued on next page...*

Continued from previous page...

Atom-1	Atom-2	Interatomic distance (Å)	Clash overlap (Å)
1:A:72:GLN:HA	1:A:99:VAL:HB	2.02	0.40
1:A:150:VAL:HA	1:A:215:GLY:O	2.21	0.40
1:A:187:SER:O	1:A:188:SER:C	2.59	0.40
1:B:252:LEU:HD12	5:B:682:HOH:O	2.22	0.40
3:B:404:UD2:H5'2	3:B:404:UD2:H3'	2.04	0.40

There are no symmetry-related clashes.

## 5.3 Torsion angles [i](#)

### 5.3.1 Protein backbone [i](#)

In the following table, the Percentiles column shows the percent Ramachandran outliers of the chain as a percentile score with respect to all X-ray entries followed by that with respect to entries of similar resolution.

The Analysed column shows the number of residues for which the backbone conformation was analysed, and the total number of residues.

Mol	Chain	Analysed	Favoured	Allowed	Outliers	Percentiles	
1	A	249/293 (85%)	238 (96%)	10 (4%)	1 (0%)	34	32
1	B	251/293 (86%)	239 (95%)	11 (4%)	1 (0%)	34	32
All	All	500/586 (85%)	477 (95%)	21 (4%)	2 (0%)	34	32

All (2) Ramachandran outliers are listed below:

Mol	Chain	Res	Type
1	A	203	PRO
1	B	203	PRO

### 5.3.2 Protein sidechains [i](#)

In the following table, the Percentiles column shows the percent sidechain outliers of the chain as a percentile score with respect to all X-ray entries followed by that with respect to entries of similar resolution.

The Analysed column shows the number of residues for which the sidechain conformation was analysed, and the total number of residues.

Mol	Chain	Analysed	Rotameric	Outliers	Percentiles	
1	A	222/263 (84%)	217 (98%)	5 (2%)	50	55
1	B	217/263 (82%)	211 (97%)	6 (3%)	43	47
All	All	439/526 (84%)	428 (98%)	11 (2%)	47	52

All (11) residues with a non-rotameric sidechain are listed below:

Mol	Chain	Res	Type
1	A	82	ARG
1	A	120	ILE
1	A	155	LEU
1	A	196	PHE
1	A	203	PRO
1	B	82	ARG
1	B	84	LEU
1	B	120	ILE
1	B	155	LEU
1	B	192	SER
1	B	205	ASN

Sometimes sidechains can be flipped to improve hydrogen bonding and reduce clashes. All (4) such sidechains are listed below:

Mol	Chain	Res	Type
1	A	113	ASN
1	A	318	GLN
1	B	113	ASN
1	B	205	ASN

### 5.3.3 RNA [i](#)

There are no RNA molecules in this entry.

## 5.4 Non-standard residues in protein, DNA, RNA chains [i](#)

There are no non-standard protein/DNA/RNA residues in this entry.

## 5.5 Carbohydrates [i](#)

There are no monosaccharides in this entry.

## 5.6 Ligand geometry

Of 6 ligands modelled in this entry, 2 are monoatomic - leaving 4 for Mogul analysis.

In the following table, the Counts columns list the number of bonds (or angles) for which Mogul statistics could be retrieved, the number of bonds (or angles) that are observed in the model and the number of bonds (or angles) that are defined in the Chemical Component Dictionary. The Link column lists molecule types, if any, to which the group is linked. The Z score for a bond length (or angle) is the number of standard deviations the observed value is removed from the expected value. A bond length (or angle) with  $|Z| > 2$  is considered an outlier worth inspection. RMSZ is the root-mean-square of all Z scores of the bond lengths (or angles).

Mol	Type	Chain	Res	Link	Bond lengths			Bond angles		
					Counts	RMSZ	# Z  > 2	Counts	RMSZ	# Z  > 2
3	UD2	A	405	2	38,41,41	1.11	2 (5%)	57,62,62	0.96	3 (5%)
4	EDO	A	401	-	3,3,3	2.16	2 (66%)	2,2,2	0.47	0
4	EDO	B	402	-	3,3,3	2.13	2 (66%)	2,2,2	0.40	0
3	UD2	B	404	2	38,41,41	1.11	1 (2%)	57,62,62	0.98	2 (3%)

In the following table, the Chirals column lists the number of chiral outliers, the number of chiral centers analysed, the number of these observed in the model and the number defined in the Chemical Component Dictionary. Similar counts are reported in the Torsion and Rings columns. '-' means no outliers of that kind were identified.

Mol	Type	Chain	Res	Link	Chirals	Torsions	Rings
3	UD2	A	405	2	-	7/26/63/63	0/3/3/3
4	EDO	A	401	-	-	1/1/1/1	-
4	EDO	B	402	-	-	0/1/1/1	-
3	UD2	B	404	2	-	3/26/63/63	0/3/3/3

All (7) bond length outliers are listed below:

Mol	Chain	Res	Type	Atoms	Z	Observed(Å)	Ideal(Å)
4	B	402	EDO	O2-C2	2.86	1.56	1.42
4	A	401	EDO	O2-C2	2.85	1.56	1.42
3	B	404	UD2	O5'-C1'	2.58	1.48	1.41
3	A	405	UD2	O5'-C1'	2.31	1.47	1.41
4	A	401	EDO	O1-C1	2.26	1.53	1.42
4	B	402	EDO	O1-C1	2.18	1.53	1.42
3	A	405	UD2	C2-N1	2.00	1.41	1.38

All (5) bond angle outliers are listed below:

Mol	Chain	Res	Type	Atoms	Z	Observed(°)	Ideal(°)
3	B	404	UD2	O5'-C1'-O1'	3.80	116.34	111.36
3	A	405	UD2	O5'-C1'-O1'	3.80	116.33	111.36
3	A	405	UD2	PB-O1'-C1'	2.39	128.98	119.74
3	B	404	UD2	O1B-PB-O2B	2.35	123.86	112.24
3	A	405	UD2	O1B-PB-O2B	2.29	123.54	112.24

There are no chirality outliers.

All (11) torsion outliers are listed below:

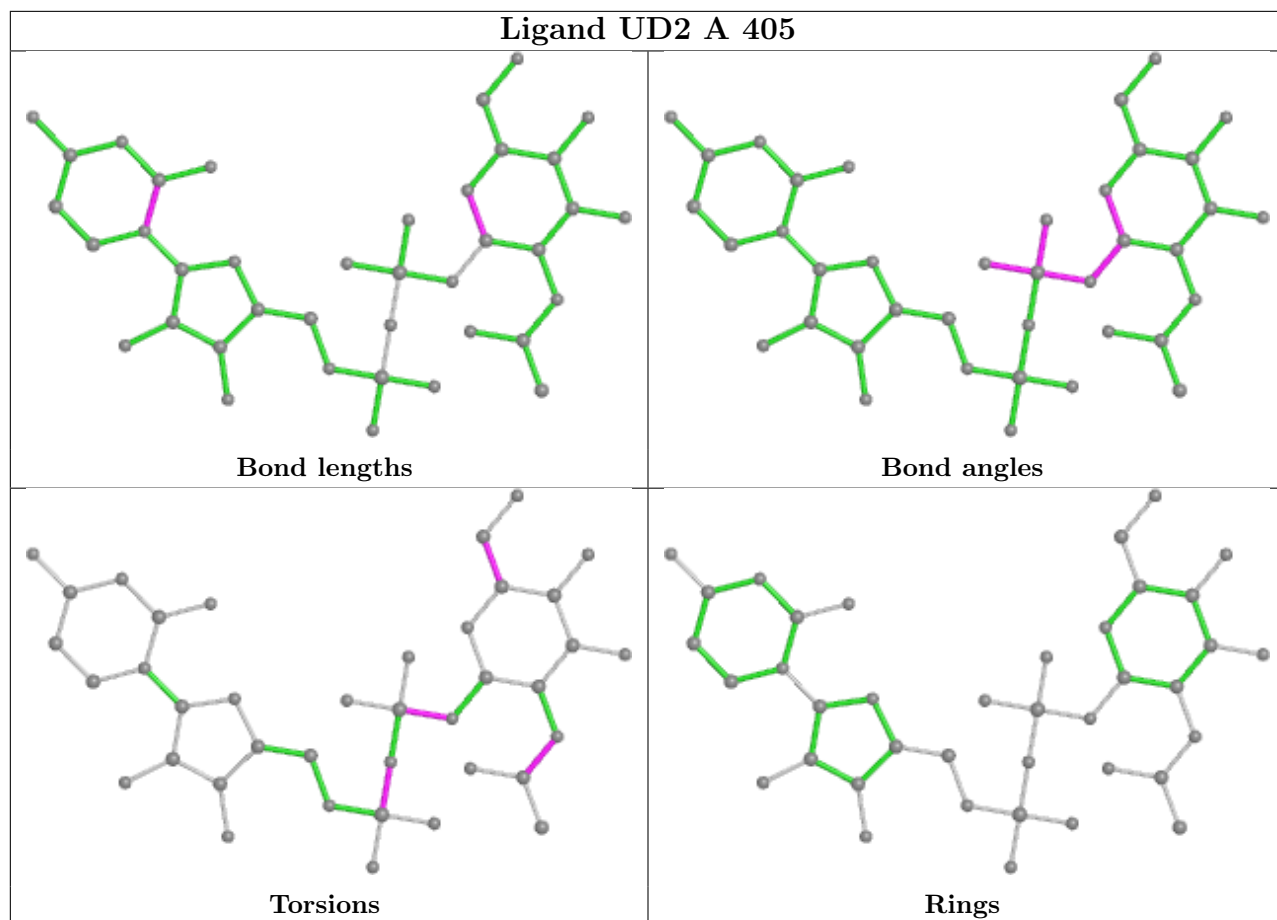
Mol	Chain	Res	Type	Atoms
3	A	405	UD2	C4'-C5'-C6'-O6'
3	A	405	UD2	C1'-O1'-PB-O3A
3	B	404	UD2	C1'-O1'-PB-O3A
3	A	405	UD2	O5'-C5'-C6'-O6'
3	A	405	UD2	PB-O3A-PA-O1A
3	B	404	UD2	PB-O3A-PA-O1A
3	A	405	UD2	C8'-C7'-N2'-C2'
3	A	405	UD2	O7'-C7'-N2'-C2'
4	A	401	EDO	O1-C1-C2-O2
3	A	405	UD2	PB-O3A-PA-O2A
3	B	404	UD2	PB-O3A-PA-O2A

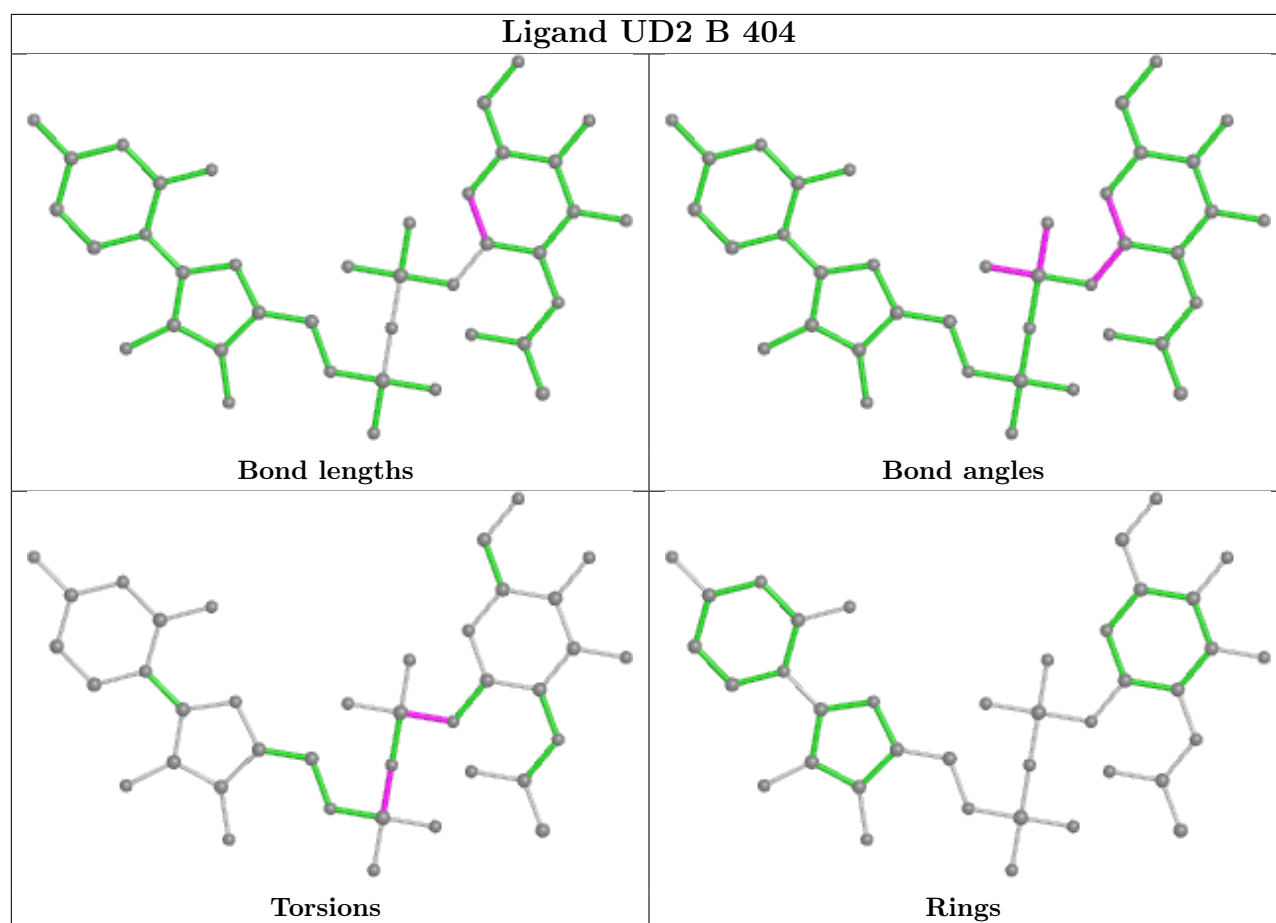
There are no ring outliers.

2 monomers are involved in 3 short contacts:

Mol	Chain	Res	Type	Clashes	Symm-Clashes
3	A	405	UD2	2	0
3	B	404	UD2	1	0

The following is a two-dimensional graphical depiction of Mogul quality analysis of bond lengths, bond angles, torsion angles, and ring geometry for all instances of the Ligand of Interest. In addition, ligands with molecular weight > 250 and outliers as shown on the validation Tables will also be included. For torsion angles, if less than 5% of the Mogul distribution of torsion angles is within 10 degrees of the torsion angle in question, then that torsion angle is considered an outlier. Any bond that is central to one or more torsion angles identified as an outlier by Mogul will be highlighted in the graph. For rings, the root-mean-square deviation (RMSD) between the ring in question and similar rings identified by Mogul is calculated over all ring torsion angles. If the average RMSD is greater than 60 degrees and the minimal RMSD between the ring in question and any Mogul-identified rings is also greater than 60 degrees, then that ring is considered an outlier. The outliers are highlighted in purple. The color gray indicates Mogul did not find sufficient equivalents in the CSD to analyse the geometry.





## 5.7 Other polymers [\(i\)](#)

There are no such residues in this entry.

## 5.8 Polymer linkage issues [\(i\)](#)

There are no chain breaks in this entry.



## 6 Fit of model and data

### 6.1 Protein, DNA and RNA chains

In the following table, the column labelled ‘#RSRZ > 2’ contains the number (and percentage) of RSRZ outliers, followed by percent RSRZ outliers for the chain as percentile scores relative to all X-ray entries and entries of similar resolution. The OWAB column contains the minimum, median, 95<sup>th</sup> percentile and maximum values of the occupancy-weighted average B-factor per residue. The column labelled ‘Q < 0.9’ lists the number of (and percentage) of residues with an average occupancy less than 0.9.

Mol	Chain	Analysed	<RSRZ>	#RSRZ>2	OWAB(Å <sup>2</sup> )	Q<0.9
1	A	253/293 (86%)	-0.15	9 (3%) 42 49	13, 25, 49, 74	0
1	B	255/293 (87%)	0.01	14 (5%) 25 31	14, 28, 50, 69	0
All	All	508/586 (86%)	-0.07	23 (4%) 33 38	13, 26, 50, 74	0

All (23) RSRZ outliers are listed below:

Mol	Chain	Res	Type	RSRZ
1	B	203	PRO	9.2
1	B	202	GLY	6.5
1	B	287	ALA	5.0
1	A	203	PRO	4.7
1	A	202	GLY	3.9
1	B	188	SER	3.9
1	B	64	LEU	3.8
1	A	188	SER	3.3
1	A	274	GLU	3.1
1	B	286	ARG	2.7
1	B	274	GLU	2.7
1	B	189	GLY	2.6
1	A	104	GLY	2.4
1	A	288	GLU	2.4
1	A	287	ALA	2.3
1	B	104	GLY	2.3
1	B	247	ILE	2.3
1	A	107	GLY	2.3
1	B	62	SER	2.3
1	B	302	ASN	2.2
1	A	98	VAL	2.2
1	B	204	GLY	2.2
1	B	240	GLU	2.1

## 6.2 Non-standard residues in protein, DNA, RNA chains [i](#)

There are no non-standard protein/DNA/RNA residues in this entry.

## 6.3 Carbohydrates [i](#)

There are no monosaccharides in this entry.

## 6.4 Ligands [i](#)

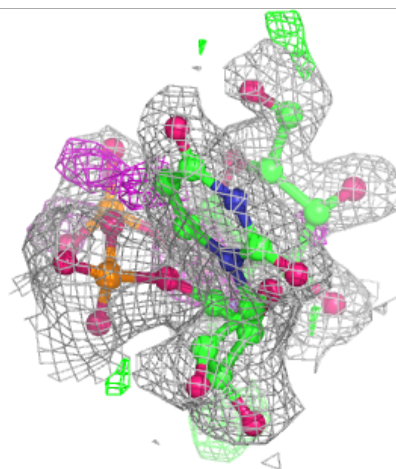
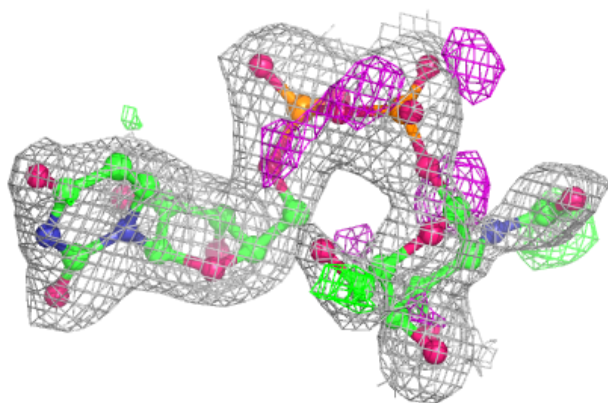
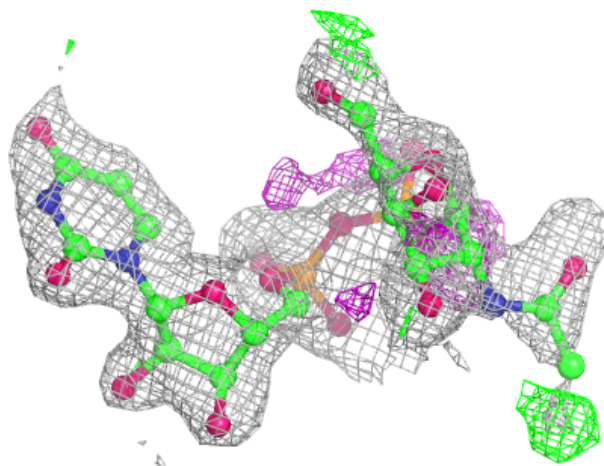
In the following table, the Atoms column lists the number of modelled atoms in the group and the number defined in the chemical component dictionary. The B-factors column lists the minimum, median, 95<sup>th</sup> percentile and maximum values of B factors of atoms in the group. The column labelled 'Q< 0.9' lists the number of atoms with occupancy less than 0.9.

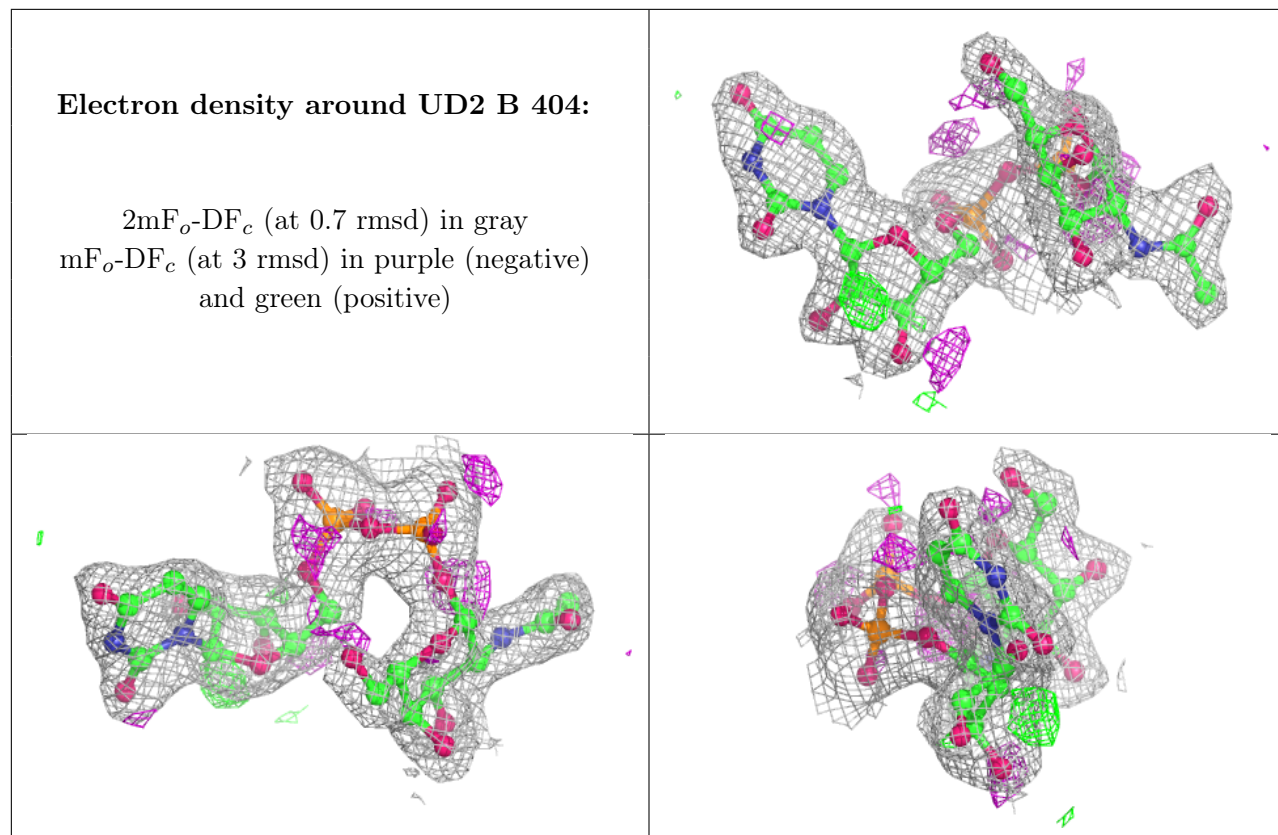
Mol	Type	Chain	Res	Atoms	RSCC	RSR	B-factors(Å <sup>2</sup> )	Q<0.9
3	UD2	A	405	39/39	0.88	0.18	40,44,55,55	0
3	UD2	B	404	39/39	0.91	0.14	34,38,43,45	0
4	EDO	B	402	4/4	0.91	0.14	23,25,27,29	0
4	EDO	A	401	4/4	0.96	0.08	20,24,24,25	0
2	MN	A	600	1/1	0.96	0.07	54,54,54,54	0
2	MN	B	601	1/1	0.98	0.05	45,45,45,45	0

The following is a graphical depiction of the model fit to experimental electron density of all instances of the Ligand of Interest. In addition, ligands with molecular weight > 250 and outliers as shown on the geometry validation Tables will also be included. Each fit is shown from different orientation to approximate a three-dimensional view.

**Electron density around UD2 A 405:**

$2mF_o-DF_c$  (at 0.7 rmsd) in gray  
 $mF_o-DF_c$  (at 3 rmsd) in purple (negative)  
and green (positive)





## 6.5 Other polymers [i](#)

There are no such residues in this entry.