



# Full wwPDB X-ray Structure Validation Report ⓘ

Feb 4, 2024 – 06:42 AM EST

PDB ID : 1OM5  
Title : STRUCTURE OF RAT NEURONAL NOS HEME DOMAIN WITH 3-BRO  
MO-7-NITROINDAZOLE BOUND  
Authors : Li, H.; Martasek, P.; Masters, B.S.S.; Poulos, T.L.; Raman, C.S.  
Deposited on : 2003-02-24  
Resolution : 2.30 Å(reported)

This is a Full wwPDB X-ray Structure Validation Report for a publicly released PDB entry.

We welcome your comments at [validation@mail.wwpdb.org](mailto:validation@mail.wwpdb.org)

A user guide is available at

<https://www.wwpdb.org/validation/2017/XrayValidationReportHelp>

with specific help available everywhere you see the ⓘ symbol.

The types of validation reports are described at

<http://www.wwpdb.org/validation/2017/FAQs#types>.

---

The following versions of software and data (see [references ⓘ](#)) were used in the production of this report:

MolProbity : 4.02b-467  
Mogul : 1.8.5 (274361), CSD as541be (2020)  
Xtriage (Phenix) : 1.13  
EDS : 2.36  
buster-report : 1.1.7 (2018)  
Percentile statistics : 20191225.v01 (using entries in the PDB archive December 25th 2019)  
Refmac : 5.8.0158  
CCP4 : 7.0.044 (Gargrove)  
Ideal geometry (proteins) : Engh & Huber (2001)  
Ideal geometry (DNA, RNA) : Parkinson et al. (1996)  
Validation Pipeline (wwPDB-VP) : 2.36

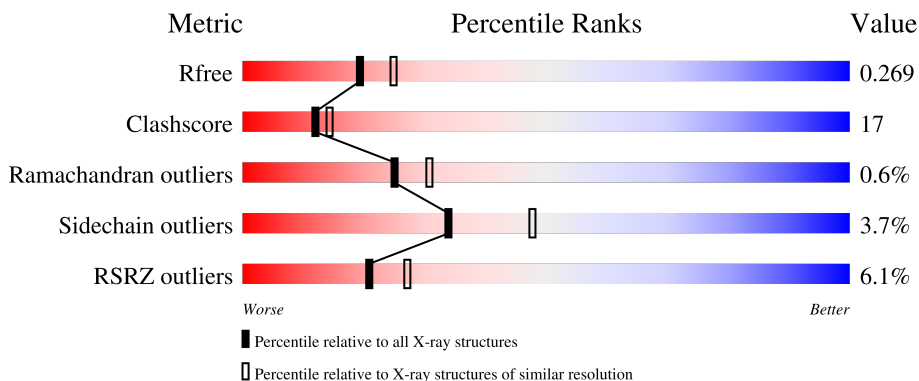
# 1 Overall quality at a glance

The following experimental techniques were used to determine the structure:

*X-RAY DIFFRACTION*

The reported resolution of this entry is 2.30 Å.

Percentile scores (ranging between 0-100) for global validation metrics of the entry are shown in the following graphic. The table shows the number of entries on which the scores are based.



Metric	Whole archive (#Entries)	Similar resolution (#Entries, resolution range(Å))
$R_{free}$	130704	5042 (2.30-2.30)
Clashscore	141614	5643 (2.30-2.30)
Ramachandran outliers	138981	5575 (2.30-2.30)
Sidechain outliers	138945	5575 (2.30-2.30)
RSRZ outliers	127900	4938 (2.30-2.30)

The table below summarises the geometric issues observed across the polymeric chains and their fit to the electron density. The red, orange, yellow and green segments of the lower bar indicate the fraction of residues that contain outliers for  $\geq 3$ , 2, 1 and 0 types of geometric quality criteria respectively. A grey segment represents the fraction of residues that are not modelled. The numeric value for each fraction is indicated below the corresponding segment, with a dot representing fractions  $\leq 5\%$ . The upper red bar (where present) indicates the fraction of residues that have poor fit to the electron density. The numeric value is given above the bar.

Mol	Chain	Length	Quality of chain
1	A	421	
1	B	421	

The following table lists non-polymeric compounds, carbohydrate monomers and non-standard residues in protein, DNA, RNA chains that are outliers for geometric or electron-density-fit criteria:

Mol	Type	Chain	Res	Chirality	Geometry	Clashes	Electron density
2	ACT	A	860	-	-	X	-

## 2 Entry composition [i](#)

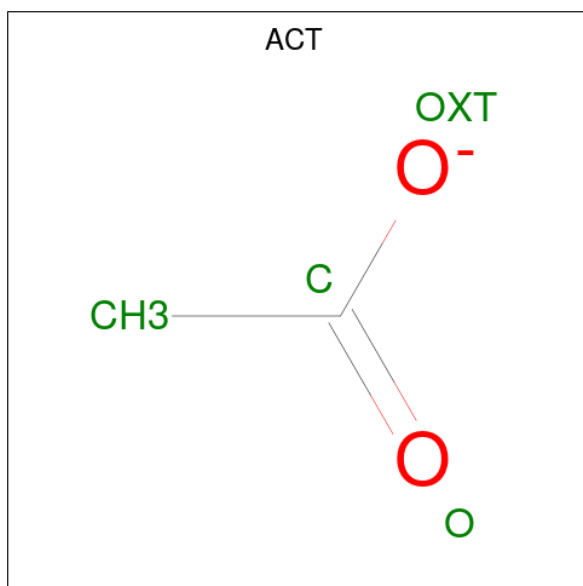
There are 7 unique types of molecules in this entry. The entry contains 7055 atoms, of which 0 are hydrogens and 0 are deuteriums.

In the tables below, the ZeroOcc column contains the number of atoms modelled with zero occupancy, the AltConf column contains the number of residues with at least one atom in alternate conformation and the Trace column contains the number of residues modelled with at most 2 atoms.

- Molecule 1 is a protein called Nitric-oxide synthase, brain.

Mol	Chain	Residues	Atoms					ZeroOcc	AltConf	Trace
			Total	C	N	O	S			
1	A	407	Total 3313	C 2121	N 566	O 605	S 21	0	0	0
1	B	410	Total 3341	C 2138	N 573	O 609	S 21	0	0	0

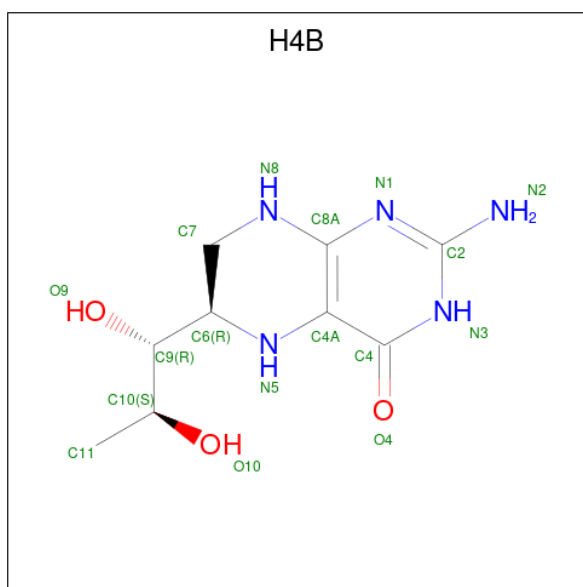
- Molecule 2 is ACETATE ION (three-letter code: ACT) (formula: C<sub>2</sub>H<sub>3</sub>O<sub>2</sub>).



Mol	Chain	Residues	Atoms			ZeroOcc	AltConf
			Total	C	O		
2	A	1	Total 4	C 2	O 2	0	0
2	B	1	Total 4	C 2	O 2	0	0

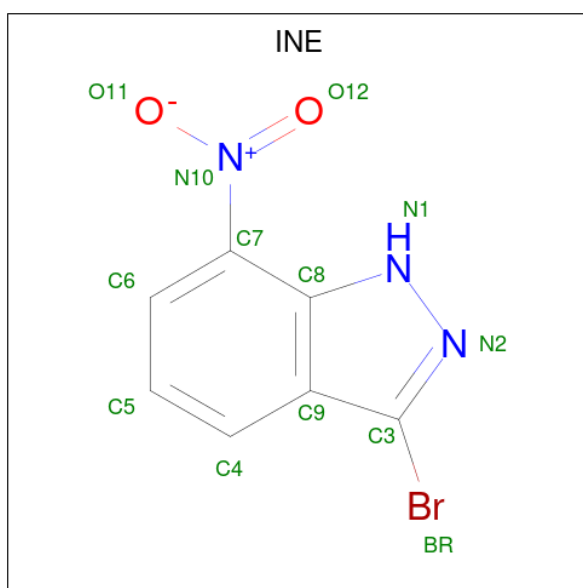
- Molecule 3 is ZINC ION (three-letter code: ZN) (formula: Zn).





Mol	Chain	Residues	Atoms				ZeroOcc	AltConf
			Total	C	N	O		
5	A	1	17	9	5	3	0	0
5	B	1	17	9	5	3	0	0

- Molecule 6 is 3-BROMO-7-NITROINDAZOLE (three-letter code: INE) (formula:  $C_7H_4BrN_3O_2$ ).



Mol	Chain	Residues	Atoms					ZeroOcc	AltConf
			Total	Br	C	N	O		
6	A	1	13	1	7	3	2	0	0
6	B	1	13	1	7	3	2	0	0

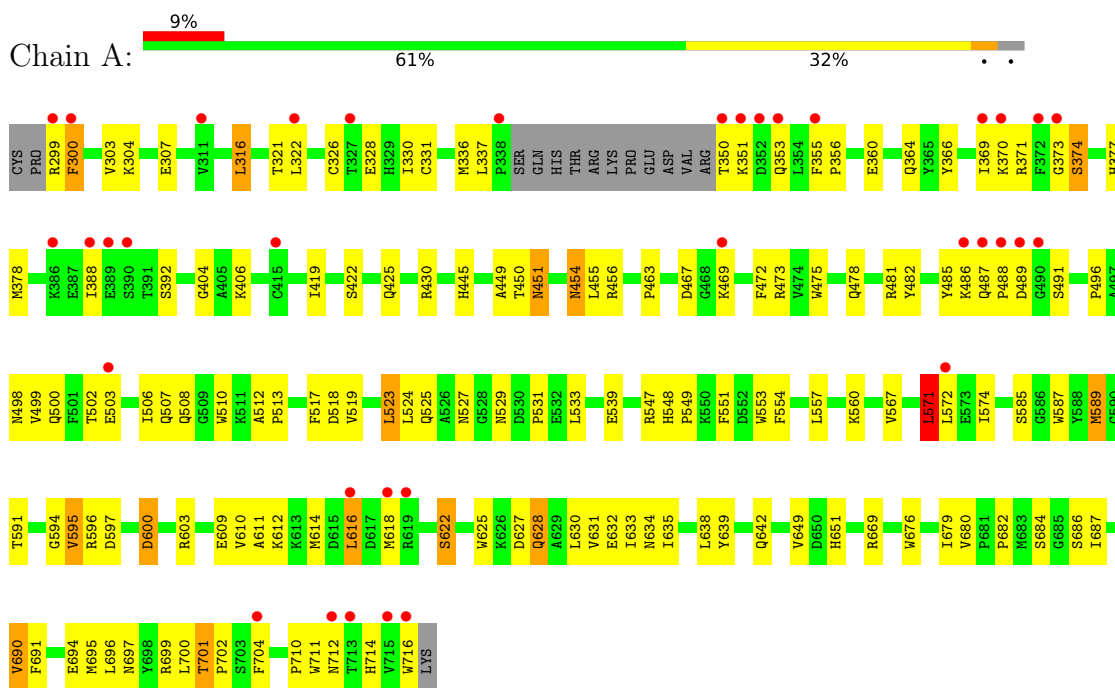
- Molecule 7 is water.

<b>Mol</b>	<b>Chain</b>	<b>Residues</b>	<b>Atoms</b>		<b>ZeroOcc</b>	<b>AltConf</b>
7	A	111	Total 111	O 111	0	0
7	B	135	Total 135	O 135	0	0

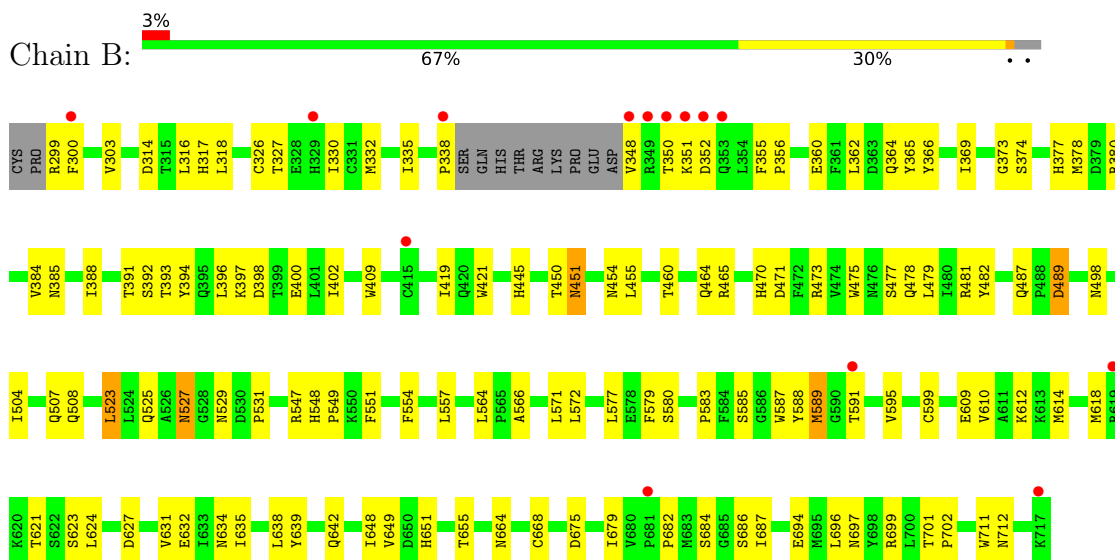
### 3 Residue-property plots [i](#)

These plots are drawn for all protein, RNA, DNA and oligosaccharide chains in the entry. The first graphic for a chain summarises the proportions of the various outlier classes displayed in the second graphic. The second graphic shows the sequence view annotated by issues in geometry and electron density. Residues are color-coded according to the number of geometric quality criteria for which they contain at least one outlier: green = 0, yellow = 1, orange = 2 and red = 3 or more. A red dot above a residue indicates a poor fit to the electron density ( $RSRZ > 2$ ). Stretches of 2 or more consecutive residues without any outlier are shown as a green connector. Residues present in the sample, but not in the model, are shown in grey.

- Molecule 1: Nitric-oxide synthase, brain



- Molecule 1: Nitric-oxide synthase, brain





## 4 Data and refinement statistics i

Property	Value	Source
Space group	P 21 21 21	Depositor
Cell constants a, b, c, $\alpha$ , $\beta$ , $\gamma$	51.70Å 110.78Å 164.58Å 90.00° 90.00° 90.00°	Depositor
Resolution (Å)	29.56 – 2.30 29.56 – 2.30	Depositor EDS
% Data completeness (in resolution range)	91.5 (29.56-2.30) 91.5 (29.56-2.30)	Depositor EDS
$R_{merge}$	0.07	Depositor
$R_{sym}$	0.07	Depositor
$\langle I/\sigma(I) \rangle$ <sup>1</sup>	1.62 (at 2.29Å)	Xtrriage
Refinement program	CNS 1.1	Depositor
R, $R_{free}$	0.231 , 0.280 0.223 , 0.269	Depositor DCC
$R_{free}$ test set	1979 reflections (5.03%)	wwPDB-VP
Wilson B-factor (Å <sup>2</sup> )	38.6	Xtrriage
Anisotropy	0.827	Xtrriage
Bulk solvent $k_{sol}$ (e/Å <sup>3</sup> ), $B_{sol}$ (Å <sup>2</sup> )	0.34 , 49.4	EDS
L-test for twinning <sup>2</sup>	$\langle  L  \rangle = 0.48$ , $\langle L^2 \rangle = 0.32$	Xtrriage
Estimated twinning fraction	No twinning to report.	Xtrriage
$F_o, F_c$ correlation	0.94	EDS
Total number of atoms	7055	wwPDB-VP
Average B, all atoms (Å <sup>2</sup> )	51.0	wwPDB-VP

Xtrriage's analysis on translational NCS is as follows: *The largest off-origin peak in the Patterson function is 4.32% of the height of the origin peak. No significant pseudotranslation is detected.*

<sup>1</sup>Intensities estimated from amplitudes.

<sup>2</sup>Theoretical values of  $\langle |L| \rangle$ ,  $\langle L^2 \rangle$  for acentric reflections are 0.5, 0.333 respectively for untwinned datasets, and 0.375, 0.2 for perfectly twinned datasets.

## 5 Model quality [i](#)

### 5.1 Standard geometry [i](#)

Bond lengths and bond angles in the following residue types are not validated in this section: HEM, H4B, INE, ZN, ACT

The Z score for a bond length (or angle) is the number of standard deviations the observed value is removed from the expected value. A bond length (or angle) with  $|Z| > 5$  is considered an outlier worth inspection. RMSZ is the root-mean-square of all Z scores of the bond lengths (or angles).

Mol	Chain	Bond lengths		Bond angles	
		RMSZ	# Z  >5	RMSZ	# Z  >5
1	A	0.39	0/3406	0.66	3/4621 (0.1%)
1	B	0.40	0/3434	0.65	2/4656 (0.0%)
All	All	0.39	0/6840	0.66	5/9277 (0.1%)

There are no bond length outliers.

All (5) bond angle outliers are listed below:

Mol	Chain	Res	Type	Atoms	Z	Observed(°)	Ideal(°)
1	B	326	CYS	CA-CB-SG	8.22	128.80	114.00
1	A	326	CYS	CA-CB-SG	7.87	128.17	114.00
1	B	589	MET	N-CA-C	-5.34	96.59	111.00
1	A	589	MET	N-CA-C	-5.22	96.91	111.00
1	A	571	LEU	CA-CB-CG	5.19	127.25	115.30

There are no chirality outliers.

There are no planarity outliers.

### 5.2 Too-close contacts [i](#)

In the following table, the Non-H and H(model) columns list the number of non-hydrogen atoms and hydrogen atoms in the chain respectively. The H(added) column lists the number of hydrogen atoms added and optimized by MolProbity. The Clashes column lists the number of clashes within the asymmetric unit, whereas Symm-Clashes lists symmetry-related clashes.

Mol	Chain	Non-H	H(model)	H(added)	Clashes	Symm-Clashes
1	A	3313	0	3221	128	0
1	B	3341	0	3256	112	0
2	A	4	0	3	3	0
2	B	4	0	3	0	0

*Continued on next page...*

*Continued from previous page...*

Mol	Chain	Non-H	H(model)	H(added)	Clashes	Symm-Clashes
3	A	1	0	0	0	0
4	A	43	0	30	2	0
4	B	43	0	30	5	0
5	A	17	0	15	0	0
5	B	17	0	15	0	0
6	A	13	0	4	1	0
6	B	13	0	4	1	0
7	A	111	0	0	7	0
7	B	135	0	0	5	0
All	All	7055	0	6581	230	0

The all-atom clashscore is defined as the number of clashes found per 1000 atoms (including hydrogen atoms). The all-atom clashscore for this structure is 17.

All (230) close contacts within the same asymmetric unit are listed below, sorted by their clash magnitude.

Atom-1	Atom-2	Interatomic distance (Å)	Clash overlap (Å)
1:B:523:LEU:HD22	1:B:531:PRO:HB2	1.35	1.04
1:B:373:GLY:H	1:B:377:HIS:CD2	1.86	0.92
1:B:373:GLY:H	1:B:377:HIS:HD2	0.97	0.91
1:A:696:LEU:HD22	1:B:330:ILE:HD11	1.51	0.91
1:A:523:LEU:HD22	1:A:531:PRO:HB2	1.49	0.91
1:A:596:ARG:O	1:A:600:ASP:HB2	1.77	0.83
1:A:549:PRO:HG3	1:A:639:TYR:CG	2.14	0.82
1:B:614:MET:HE3	1:B:632:GLU:HG3	1.62	0.80
1:B:373:GLY:N	1:B:377:HIS:HD2	1.77	0.79
1:B:612:LYS:HA	1:B:618:MET:HE1	1.65	0.78
1:B:610:VAL:O	1:B:614:MET:HG3	1.85	0.77
1:A:322:LEU:HB2	1:A:699:ARG:NH1	1.99	0.77
1:B:631:VAL:O	1:B:635:ILE:HG12	1.85	0.76
4:A:750:HEM:HBC2	4:A:750:HEM:HMC2	1.67	0.76
1:B:470:HIS:HB3	1:B:527:ASN:ND2	2.01	0.76
1:B:566:ALA:HB2	1:B:585:SER:HB3	1.69	0.74
1:A:611:ALA:HB1	1:A:616:LEU:HD11	1.69	0.73
1:B:299:ARG:HG2	1:B:299:ARG:HH11	1.53	0.72
1:A:684:SER:HB3	1:A:687:ILE:HG12	1.72	0.72
1:A:508:GLN:HE22	1:A:716:TRP:HZ3	1.38	0.72
1:B:478:GLN:HB2	1:B:481:ARG:HG3	1.73	0.70
1:B:360:GLU:O	1:B:364:GLN:HG3	1.92	0.70
1:A:322:LEU:HB3	1:A:699:ARG:HD3	1.72	0.70
1:A:491:SER:HB2	7:A:200:HOH:O	1.93	0.69

*Continued on next page...*

*Continued from previous page...*

Atom-1	Atom-2	Interatomic distance (Å)	Clash overlap (Å)
1:B:504:ILE:O	1:B:508:GLN:HG2	1.93	0.69
1:A:350:THR:HB	1:A:353:GLN:HG3	1.75	0.68
1:B:332:MET:HB3	1:B:335:ILE:HG13	1.74	0.68
1:B:548:HIS:ND1	1:B:549:PRO:HD2	2.09	0.67
1:A:322:LEU:HB2	1:A:699:ARG:HH11	1.58	0.67
1:A:485:TYR:CE2	1:A:512:ALA:HB1	2.30	0.67
1:B:299:ARG:HG3	1:B:300:PHE:N	2.09	0.67
1:A:373:GLY:H	1:A:377:HIS:CD2	2.12	0.66
1:A:595:VAL:HB	1:A:630:LEU:HD11	1.75	0.66
1:A:485:TYR:HE2	1:A:512:ALA:HB1	1.61	0.66
1:A:517:PHE:HB2	1:A:560:LYS:HE2	1.78	0.65
1:A:328:GLU:CD	1:A:328:GLU:H	1.99	0.65
1:A:635:ILE:HD11	1:B:624:LEU:HB2	1.78	0.65
1:B:350:THR:HB	1:B:352:ASP:OD1	1.97	0.65
1:B:549:PRO:HG3	1:B:639:TYR:CG	2.32	0.65
1:A:571:LEU:HD12	1:A:571:LEU:C	2.18	0.64
1:B:398:ASP:O	1:B:402:ILE:HG13	1.98	0.64
1:B:303:VAL:HG13	1:B:694:GLU:HB2	1.80	0.64
1:B:523:LEU:CD2	1:B:531:PRO:HB2	2.20	0.63
4:B:750:HEM:HMC1	4:B:750:HEM:HBC2	1.80	0.63
1:B:473:ARG:CD	1:B:580:SER:HB2	2.30	0.62
1:A:330:ILE:HD11	1:B:696:LEU:HD22	1.81	0.61
1:B:397:LYS:HB2	1:B:400:GLU:HG3	1.82	0.61
1:A:591:THR:O	1:A:595:VAL:HG13	2.01	0.61
1:A:690:VAL:HG22	1:A:695:MET:CE	2.31	0.61
1:B:335:ILE:HB	1:B:338:PRO:HG3	1.82	0.61
1:A:682:PRO:HB2	1:B:686:SER:OG	2.01	0.60
1:B:355:PHE:CE1	1:B:385:ASN:HB2	2.37	0.60
1:B:473:ARG:HD3	1:B:580:SER:HB2	1.82	0.60
1:B:591:THR:O	1:B:595:VAL:HG13	2.02	0.59
1:A:631:VAL:O	1:A:635:ILE:HG12	2.02	0.59
1:A:553:TRP:CZ3	1:A:557:LEU:HD11	2.37	0.59
1:B:571:LEU:HD12	1:B:572:LEU:N	2.17	0.59
4:B:750:HEM:HBC2	4:B:750:HEM:CMC	2.32	0.59
1:B:362:LEU:HD11	1:B:384:VAL:HG21	1.83	0.59
1:A:496:PRO:HA	1:A:499:VAL:HG23	1.85	0.58
1:B:475:TRP:HB2	1:B:523:LEU:HB3	1.84	0.58
1:A:548:HIS:ND1	1:A:549:PRO:HD2	2.19	0.58
1:B:651:HIS:O	1:B:655:THR:HG23	2.04	0.58
1:B:638:LEU:O	1:B:642:GLN:HG3	2.04	0.58
1:B:380:ARG:O	1:B:384:VAL:HG23	2.04	0.57

*Continued on next page...*

*Continued from previous page...*

Atom-1	Atom-2	Interatomic distance (Å)	Clash overlap (Å)
1:B:451:ASN:HB3	1:B:454:ASN:O	2.04	0.57
1:B:525:GLN:HG3	1:B:529:ASN:O	2.04	0.57
1:A:304:LYS:O	1:A:694:GLU:HG3	2.05	0.57
1:A:554:PHE:O	1:A:557:LEU:HD13	2.04	0.57
1:A:587:TRP:NE1	2:A:860:ACT:H1	2.20	0.57
1:A:525:GLN:HG3	1:A:529:ASN:O	2.04	0.56
1:B:482:TYR:O	1:B:498:ASN:ND2	2.36	0.56
1:B:464:GLN:HB3	1:B:579:PHE:CE2	2.39	0.56
1:A:303:VAL:HG13	1:A:694:GLU:HB2	1.88	0.56
1:A:714:HIS:HB3	7:A:209:HOH:O	2.05	0.56
1:B:348:VAL:O	1:B:348:VAL:HG22	2.05	0.56
1:B:566:ALA:CB	1:B:585:SER:HB3	2.35	0.56
1:A:508:GLN:OE1	1:A:508:GLN:HA	2.06	0.55
1:B:409:TRP:CE3	1:B:421:TRP:HA	2.42	0.55
1:A:487:GLN:HB3	1:A:488:PRO:HD2	1.88	0.55
1:A:610:VAL:HG21	1:A:633:ILE:HD11	1.89	0.55
1:A:549:PRO:HG3	1:A:639:TYR:CD1	2.42	0.54
1:B:564:LEU:HD11	1:B:585:SER:HB2	1.89	0.54
1:A:635:ILE:CD1	1:B:624:LEU:HB2	2.38	0.54
1:A:690:VAL:HG22	1:A:695:MET:HE1	1.89	0.54
1:A:478:GLN:HB2	1:A:481:ARG:HG3	1.88	0.54
1:A:684:SER:HB3	1:A:687:ILE:CG1	2.37	0.54
1:B:327:THR:OG1	1:B:330:ILE:HG22	2.07	0.54
1:B:299:ARG:HG2	1:B:299:ARG:NH1	2.23	0.54
1:B:699:ARG:HG2	1:B:699:ARG:HH11	1.72	0.54
1:A:616:LEU:HD13	1:A:625:TRP:HB2	1.90	0.54
1:B:332:MET:HB3	1:B:335:ILE:CG1	2.38	0.53
1:B:450:THR:HA	1:B:455:LEU:HD22	1.90	0.53
1:A:507:GLN:O	1:A:507:GLN:HG2	2.09	0.53
1:A:686:SER:HA	1:A:691:PHE:CG	2.44	0.52
1:B:419:ILE:HD13	7:B:235:HOH:O	2.09	0.52
1:A:299:ARG:CG	1:A:300:PHE:H	2.22	0.52
1:A:467:ASP:OD2	1:A:469:LYS:HB2	2.09	0.52
1:A:330:ILE:CD1	1:B:696:LEU:HD22	2.40	0.52
1:A:463:PRO:HB2	1:A:472:PHE:CE1	2.45	0.52
1:B:711:TRP:CD1	1:B:712:ASN:ND2	2.77	0.52
1:A:322:LEU:CD2	1:A:699:ARG:HD3	2.40	0.51
1:A:478:GLN:HB2	1:A:481:ARG:CG	2.40	0.51
1:A:307:GLU:HG3	7:B:32:HOH:O	2.09	0.51
1:B:445:HIS:HD2	1:B:460:THR:OG1	1.92	0.51
1:A:622:SER:HB3	7:A:48:HOH:O	2.09	0.51

*Continued on next page...*

*Continued from previous page...*

Atom-1	Atom-2	Interatomic distance (Å)	Clash overlap (Å)
1:A:322:LEU:CB	1:A:699:ARG:HD3	2.40	0.51
1:B:314:ASP:OD1	1:B:317:HIS:ND1	2.43	0.51
1:A:614:MET:CE	1:A:632:GLU:HG3	2.41	0.50
1:B:299:ARG:HB3	1:B:318:LEU:HD21	1.93	0.50
1:B:391:THR:O	1:B:392:SER:HB2	2.11	0.50
1:B:487:GLN:NE2	7:B:234:HOH:O	2.45	0.50
1:A:404:GLY:HA3	1:A:574:ILE:HD13	1.94	0.50
1:B:595:VAL:HG12	1:B:634:ASN:HD21	1.77	0.50
1:A:567:VAL:CG2	6:A:790:INE:H41	2.41	0.50
1:A:450:THR:HA	1:A:455:LEU:CD2	2.42	0.49
1:A:696:LEU:HD22	1:B:330:ILE:CD1	2.31	0.49
1:B:595:VAL:O	1:B:599:CYS:HB2	2.11	0.49
1:A:627:ASP:O	1:A:631:VAL:HG23	2.13	0.49
1:A:638:LEU:O	1:A:642:GLN:HG3	2.13	0.49
1:B:350:THR:HG22	1:B:351:LYS:N	2.28	0.49
1:B:523:LEU:HD22	1:B:531:PRO:CB	2.25	0.49
1:B:701:THR:HA	1:B:702:PRO:C	2.32	0.49
1:B:299:ARG:HH11	1:B:299:ARG:CG	2.25	0.49
1:A:587:TRP:O	4:A:750:HEM:HMB3	2.12	0.49
1:A:686:SER:OG	1:B:682:PRO:HB2	2.13	0.49
1:A:587:TRP:HE1	2:A:860:ACT:H1	1.78	0.49
1:A:594:GLY:HA3	1:A:634:ASN:ND2	2.27	0.49
1:B:557:LEU:HD23	1:B:609:GLU:OE2	2.13	0.48
1:A:373:GLY:O	1:A:374:SER:O	2.31	0.48
1:A:554:PHE:HA	1:A:557:LEU:HD13	1.95	0.48
1:A:680:VAL:HB	7:A:23:HOH:O	2.14	0.48
1:B:632:GLU:O	1:B:635:ILE:HB	2.12	0.48
1:A:711:TRP:CD1	1:A:712:ASN:ND2	2.82	0.48
1:A:701:THR:HA	1:A:702:PRO:C	2.34	0.48
1:A:473:ARG:NH2	1:A:710:PRO:HD3	2.28	0.48
1:B:473:ARG:HD2	1:B:580:SER:HB2	1.96	0.48
1:B:587:TRP:O	4:B:750:HEM:HMB3	2.13	0.48
1:A:373:GLY:H	1:A:377:HIS:HD2	1.57	0.47
1:B:479:LEU:HD21	1:B:583:PRO:HB3	1.95	0.47
1:B:711:TRP:HD1	1:B:712:ASN:ND2	2.13	0.47
1:A:553:TRP:HZ3	1:A:557:LEU:HD11	1.80	0.47
1:A:366:TYR:HA	1:A:369:ILE:HG12	1.96	0.47
1:B:588:TYR:HA	6:B:791:INE:O12	2.15	0.47
1:A:510:TRP:HB2	1:A:533:LEU:HD13	1.97	0.47
1:A:597:ASP:OD1	1:A:603:ARG:NH1	2.46	0.47
1:A:330:ILE:HD11	1:B:696:LEU:HB3	1.97	0.46

*Continued on next page...*

*Continued from previous page...*

Atom-1	Atom-2	Interatomic distance (Å)	Clash overlap (Å)
1:A:370:LYS:O	1:A:371:ARG:HD3	2.14	0.46
1:A:553:TRP:CE3	1:A:557:LEU:HD11	2.50	0.46
1:A:571:LEU:C	1:A:571:LEU:CD1	2.83	0.46
1:A:589:MET:HA	1:A:649:VAL:O	2.15	0.46
1:A:614:MET:HE3	1:A:632:GLU:HG3	1.97	0.46
1:A:388:ILE:O	1:A:392:SER:HA	2.15	0.46
1:A:548:HIS:HB2	1:A:554:PHE:CG	2.51	0.46
1:A:628:GLN:NE2	1:B:632:GLU:OE2	2.49	0.46
1:A:539:GLU:HG3	7:A:55:HOH:O	2.16	0.46
1:B:366:TYR:CD2	1:B:369:ILE:HD11	2.51	0.46
1:B:397:LYS:HD2	7:B:217:HOH:O	2.16	0.46
1:A:679:ILE:HG21	1:A:690:VAL:HG21	1.97	0.46
1:B:489:ASP:HB3	7:B:11:HOH:O	2.15	0.45
1:B:465:ARG:HG3	1:B:471:ASP:OD1	2.17	0.45
1:B:548:HIS:HB3	1:B:551:PHE:HB2	1.98	0.45
1:B:614:MET:HE3	1:B:632:GLU:CG	2.41	0.45
1:B:675:ASP:O	1:B:679:ILE:HG12	2.15	0.45
1:A:451:ASN:HB3	1:A:454:ASN:O	2.17	0.45
1:B:612:LYS:CA	1:B:618:MET:HE1	2.43	0.45
1:A:487:GLN:HB3	1:A:488:PRO:CD	2.47	0.45
1:B:355:PHE:N	1:B:356:PRO:HD2	2.31	0.45
1:A:618:MET:HA	1:A:625:TRP:CD1	2.52	0.45
1:B:684:SER:HB3	1:B:687:ILE:HD11	1.99	0.45
1:A:587:TRP:CE2	2:A:860:ACT:H1	2.52	0.45
1:B:388:ILE:O	1:B:392:SER:N	2.50	0.45
1:A:322:LEU:CB	1:A:699:ARG:HH11	2.28	0.45
1:A:548:HIS:CE1	1:A:549:PRO:HD2	2.51	0.44
1:A:635:ILE:CD1	1:B:623:SER:O	2.65	0.44
1:A:355:PHE:N	1:A:356:PRO:HD2	2.32	0.44
1:A:524:LEU:O	1:A:531:PRO:HA	2.17	0.44
1:A:551:PHE:HB3	1:A:553:TRP:NE1	2.32	0.44
1:A:676:TRP:CZ2	1:A:680:VAL:HG21	2.52	0.44
1:B:548:HIS:CE1	1:B:549:PRO:HD2	2.51	0.44
1:A:430:ARG:O	1:A:463:PRO:HG3	2.17	0.44
1:B:299:ARG:HG3	1:B:300:PHE:H	1.80	0.44
1:A:316:LEU:HD22	1:A:700:LEU:HD11	1.99	0.44
1:A:378:MET:HE2	1:A:378:MET:HA	2.00	0.44
1:A:475:TRP:CE2	1:A:710:PRO:HB2	2.53	0.44
1:B:299:ARG:NH1	1:B:299:ARG:CG	2.80	0.43
1:A:611:ALA:O	1:A:612:LYS:C	2.56	0.43
1:B:621:THR:C	1:B:623:SER:H	2.21	0.43

*Continued on next page...*

*Continued from previous page...*

Atom-1	Atom-2	Interatomic distance (Å)	Clash overlap (Å)
1:B:684:SER:HB3	1:B:687:ILE:CG1	2.48	0.43
1:A:331:CYS:HB3	1:B:697:ASN:HB3	2.00	0.43
1:A:449:ALA:O	1:A:455:LEU:HA	2.19	0.43
1:B:595:VAL:HG21	1:B:682:PRO:HG2	2.00	0.43
1:A:502:THR:O	1:A:506:ILE:HG13	2.18	0.43
1:A:350:THR:HG22	1:A:351:LYS:N	2.34	0.43
1:A:456:ARG:HG2	7:A:61:HOH:O	2.19	0.43
1:B:445:HIS:HE1	1:B:585:SER:OG	2.01	0.43
1:B:571:LEU:HD12	1:B:572:LEU:H	1.83	0.42
1:B:393:THR:OG1	1:B:394:TYR:N	2.52	0.42
1:A:500:GLN:O	1:A:503:GLU:HB2	2.19	0.42
1:B:591:THR:HA	1:B:634:ASN:HD21	1.83	0.42
4:B:750:HEM:HBA1	4:B:750:HEM:HMA2	2.01	0.42
1:A:635:ILE:HD12	1:B:623:SER:O	2.19	0.42
1:B:393:THR:O	1:B:394:TYR:HB3	2.20	0.42
1:A:551:PHE:CD1	1:A:553:TRP:CZ2	3.08	0.42
1:B:396:LEU:HG	1:B:577:LEU:HD12	2.02	0.42
1:A:486:LYS:HE3	1:A:503:GLU:OE1	2.19	0.42
1:B:589:MET:HA	1:B:649:VAL:O	2.20	0.42
1:A:510:TRP:HB2	1:A:533:LEU:CD1	2.49	0.42
1:B:664:ASN:O	1:B:668:CYS:HB2	2.20	0.42
1:B:507:GLN:O	1:B:507:GLN:HG2	2.20	0.42
1:B:548:HIS:HB2	1:B:554:PHE:CG	2.55	0.42
1:A:353:GLN:O	1:A:356:PRO:HG2	2.21	0.41
1:A:498:ASN:O	1:A:499:VAL:C	2.58	0.41
1:A:406:LYS:HE2	1:A:422:SER:O	2.20	0.41
1:A:482:TYR:HA	1:A:518:ASP:O	2.21	0.41
1:A:651:HIS:NE2	1:B:627:ASP:OD2	2.44	0.41
1:B:587:TRP:H	4:B:750:HEM:HAB	1.86	0.41
1:A:445:HIS:HE1	1:A:585:SER:OG	2.03	0.41
1:A:513:PRO:HG2	1:A:518:ASP:CG	2.41	0.41
1:A:551:PHE:HB3	1:A:553:TRP:CE2	2.56	0.41
1:B:364:GLN:O	1:B:365:TYR:C	2.60	0.41
1:A:419:ILE:O	1:A:419:ILE:HG12	2.20	0.40
1:A:711:TRP:HD1	1:A:712:ASN:ND2	2.19	0.40
1:B:332:MET:HE3	1:B:338:PRO:HB3	2.03	0.40
1:B:351:LYS:HG3	1:B:352:ASP:N	2.36	0.40
1:A:425:GLN:HA	1:A:425:GLN:NE2	2.37	0.40
1:A:519:VAL:HG23	7:A:201:HOH:O	2.21	0.40
1:A:360:GLU:O	1:A:364:GLN:HG3	2.21	0.40
1:A:572:LEU:HD13	1:A:704:PHE:CE2	2.57	0.40

*Continued on next page...*



*Continued from previous page...*

Atom-1	Atom-2	Interatomic distance (Å)	Clash overlap (Å)
1:A:697:ASN:HD22	1:A:697:ASN:HA	1.65	0.40

There are no symmetry-related clashes.

## 5.3 Torsion angles [i](#)

### 5.3.1 Protein backbone [i](#)

In the following table, the Percentiles column shows the percent Ramachandran outliers of the chain as a percentile score with respect to all X-ray entries followed by that with respect to entries of similar resolution.

The Analysed column shows the number of residues for which the backbone conformation was analysed, and the total number of residues.

Mol	Chain	Analysed	Favoured	Allowed	Outliers	Percentiles	
1	A	403/421 (96%)	369 (92%)	31 (8%)	3 (1%)	22	26
1	B	406/421 (96%)	377 (93%)	27 (7%)	2 (0%)	29	35
All	All	809/842 (96%)	746 (92%)	58 (7%)	5 (1%)	25	31

All (5) Ramachandran outliers are listed below:

Mol	Chain	Res	Type
1	A	374	SER
1	B	374	SER
1	A	489	ASP
1	A	669	ARG
1	B	648	ILE

### 5.3.2 Protein sidechains [i](#)

In the following table, the Percentiles column shows the percent sidechain outliers of the chain as a percentile score with respect to all X-ray entries followed by that with respect to entries of similar resolution.

The Analysed column shows the number of residues for which the sidechain conformation was analysed, and the total number of residues.

*Continued on next page...*

*Continued from previous page...*

Mol	Chain	Analysed	Rotameric	Outliers	Percentiles	
1	A	363/377 (96%)	344 (95%)	19 (5%)	23	32
1	B	366/377 (97%)	358 (98%)	8 (2%)	52	69
All	All	729/754 (97%)	702 (96%)	27 (4%)	34	48

All (27) residues with a non-rotameric sidechain are listed below:

Mol	Chain	Res	Type
1	A	300	PHE
1	A	316	LEU
1	A	321	THR
1	A	336	MET
1	A	337	LEU
1	A	451	ASN
1	A	454	ASN
1	A	523	LEU
1	A	527	ASN
1	A	547	ARG
1	A	571	LEU
1	A	595	VAL
1	A	600	ASP
1	A	609	GLU
1	A	616	LEU
1	A	622	SER
1	A	628	GLN
1	A	690	VAL
1	A	701	THR
1	B	316	LEU
1	B	378	MET
1	B	451	ASN
1	B	477	SER
1	B	489	ASP
1	B	523	LEU
1	B	527	ASN
1	B	547	ARG

Sometimes sidechains can be flipped to improve hydrogen bonding and reduce clashes. All (21) such sidechains are listed below:

Mol	Chain	Res	Type
1	A	353	GLN
1	A	364	GLN
1	A	425	GLN
1	A	445	HIS
1	A	451	ASN
1	A	454	ASN
1	A	628	GLN
1	A	634	ASN
1	A	697	ASN
1	A	712	ASN
1	B	377	HIS
1	B	425	GLN
1	B	445	HIS
1	B	451	ASN
1	B	454	ASN
1	B	508	GLN
1	B	527	ASN
1	B	634	ASN
1	B	664	ASN
1	B	697	ASN
1	B	712	ASN

### 5.3.3 RNA [i](#)

There are no RNA molecules in this entry.

### 5.4 Non-standard residues in protein, DNA, RNA chains [i](#)

There are no non-standard protein/DNA/RNA residues in this entry.

### 5.5 Carbohydrates [i](#)

There are no monosaccharides in this entry.

### 5.6 Ligand geometry [i](#)

Of 9 ligands modelled in this entry, 1 is monoatomic - leaving 8 for Mogul analysis.

In the following table, the Counts columns list the number of bonds (or angles) for which Mogul statistics could be retrieved, the number of bonds (or angles) that are observed in the model and the number of bonds (or angles) that are defined in the Chemical Component Dictionary. The

Link column lists molecule types, if any, to which the group is linked. The Z score for a bond length (or angle) is the number of standard deviations the observed value is removed from the expected value. A bond length (or angle) with  $|Z| > 2$  is considered an outlier worth inspection. RMSZ is the root-mean-square of all Z scores of the bond lengths (or angles).

Mol	Type	Chain	Res	Link	Bond lengths			Bond angles		
					Counts	RMSZ	# Z  > 2	Counts	RMSZ	# Z  > 2
6	INE	A	790	-	12,14,14	3.31	3 (25%)	7,20,20	1.44	1 (14%)
2	ACT	B	861	-	3,3,3	0.93	0	3,3,3	0.76	0
6	INE	B	791	-	12,14,14	3.31	3 (25%)	7,20,20	1.42	1 (14%)
4	HEM	A	750	1	41,50,50	1.23	4 (9%)	45,82,82	1.55	4 (8%)
2	ACT	A	860	-	3,3,3	0.88	0	3,3,3	0.80	0
5	H4B	B	761	-	16,18,18	2.15	3 (18%)	11,26,26	4.24	8 (72%)
4	HEM	B	750	1	41,50,50	1.33	4 (9%)	45,82,82	1.65	3 (6%)
5	H4B	A	760	-	16,18,18	2.17	3 (18%)	11,26,26	4.19	7 (63%)

In the following table, the Chirals column lists the number of chiral outliers, the number of chiral centers analysed, the number of these observed in the model and the number defined in the Chemical Component Dictionary. Similar counts are reported in the Torsion and Rings columns. '-' means no outliers of that kind were identified.

Mol	Type	Chain	Res	Link	Chirals	Torsions	Rings
6	INE	A	790	-	-	0/2/4/4	0/2/2/2
6	INE	B	791	-	-	0/2/4/4	0/2/2/2
4	HEM	A	750	1	-	4/12/54/54	-
5	H4B	B	761	-	-	0/8/17/17	0/2/2/2
4	HEM	B	750	1	-	6/12/54/54	-
5	H4B	A	760	-	-	0/8/17/17	0/2/2/2

All (20) bond length outliers are listed below:

Mol	Chain	Res	Type	Atoms	Z	Observed(Å)	Ideal(Å)
6	A	790	INE	C3-N2	8.23	1.45	1.34
6	B	791	INE	C3-N2	8.17	1.45	1.34
6	A	790	INE	C7-N10	-7.05	1.32	1.45
6	B	791	INE	C7-N10	-7.00	1.32	1.45
5	B	761	H4B	C4-N3	5.21	1.42	1.33
5	A	760	H4B	C4-N3	5.20	1.42	1.33
5	A	760	H4B	C4A-N5	4.49	1.47	1.38
5	A	760	H4B	C6-N5	4.46	1.54	1.45
5	B	761	H4B	C6-N5	4.45	1.54	1.45
5	B	761	H4B	C4A-N5	3.99	1.46	1.38
4	B	750	HEM	C3C-CAC	-3.73	1.40	1.47

Continued on next page...

Continued from previous page...

Mol	Chain	Res	Type	Atoms	Z	Observed(Å)	Ideal(Å)
4	A	750	HEM	C3C-CAC	-3.44	1.40	1.47
4	B	750	HEM	CAB-C3B	-2.96	1.39	1.47
4	B	750	HEM	CHB-C1B	2.72	1.41	1.35
4	A	750	HEM	C1A-NA	2.65	1.41	1.36
6	A	790	INE	C8-N1	-2.60	1.31	1.37
6	B	791	INE	C8-N1	-2.58	1.31	1.37
4	A	750	HEM	CAB-C3B	-2.51	1.40	1.47
4	B	750	HEM	C4A-NA	2.42	1.41	1.36
4	A	750	HEM	CHB-C1B	2.20	1.40	1.35

All (24) bond angle outliers are listed below:

Mol	Chain	Res	Type	Atoms	Z	Observed(°)	Ideal(°)
5	B	761	H4B	C8A-C4A-C4	9.18	122.73	114.57
5	A	760	H4B	C8A-C4A-C4	8.85	122.43	114.57
4	B	750	HEM	CBA-CAA-C2A	-8.26	98.53	112.62
4	A	750	HEM	CBA-CAA-C2A	-5.95	102.46	112.62
5	A	760	H4B	C2-N3-C4	5.73	125.04	115.93
5	B	761	H4B	C2-N3-C4	5.66	124.93	115.93
5	A	760	H4B	N1-C2-N3	-4.87	117.79	125.42
5	B	761	H4B	N1-C2-N3	-4.85	117.81	125.42
4	A	750	HEM	CMD-C2D-C1D	3.91	130.99	125.04
5	A	760	H4B	C2-N1-C8A	3.77	122.99	114.54
5	A	760	H4B	C4A-C4-N3	-3.74	113.38	124.01
5	B	761	H4B	C4A-C4-N3	-3.66	113.61	124.01
6	A	790	INE	C6-C7-N10	3.61	120.33	116.47
6	B	791	INE	C6-C7-N10	3.55	120.27	116.47
5	B	761	H4B	C2-N1-C8A	3.55	122.50	114.54
5	B	761	H4B	N2-C2-N1	3.33	122.42	117.25
5	A	760	H4B	N2-C2-N1	3.19	122.22	117.25
5	A	760	H4B	C4A-N5-C6	-2.98	113.04	121.16
5	B	761	H4B	C4A-N5-C6	-2.84	113.44	121.16
5	B	761	H4B	C4-C4A-N5	-2.68	116.87	119.12
4	A	750	HEM	C4B-CHC-C1C	2.61	126.00	122.56
4	A	750	HEM	C4A-C3A-C2A	2.33	108.62	107.00
4	B	750	HEM	C1B-NB-C4B	-2.07	102.94	105.07
4	B	750	HEM	C2D-C1D-ND	2.05	112.33	109.88

There are no chirality outliers.

All (10) torsion outliers are listed below:

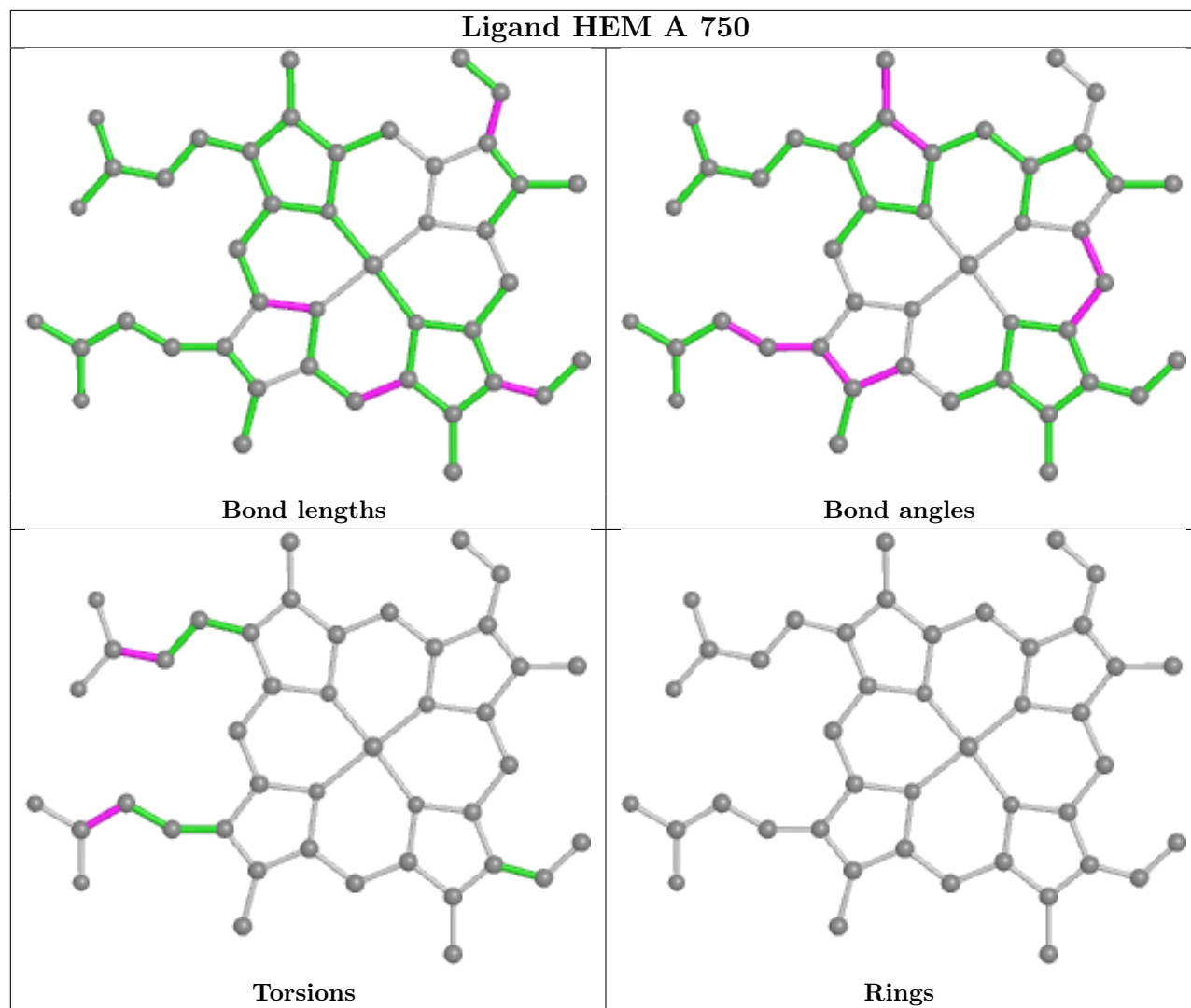
Mol	Chain	Res	Type	Atoms
4	B	750	HEM	C2B-C3B-CAB-CBB
4	B	750	HEM	C4B-C3B-CAB-CBB
4	A	750	HEM	CAA-CBA-CGA-O2A
4	A	750	HEM	CAD-CBD-CGD-O2D
4	A	750	HEM	CAA-CBA-CGA-O1A
4	B	750	HEM	CAA-CBA-CGA-O1A
4	B	750	HEM	CAA-CBA-CGA-O2A
4	A	750	HEM	CAD-CBD-CGD-O1D
4	B	750	HEM	CAD-CBD-CGD-O2D
4	B	750	HEM	CAD-CBD-CGD-O1D

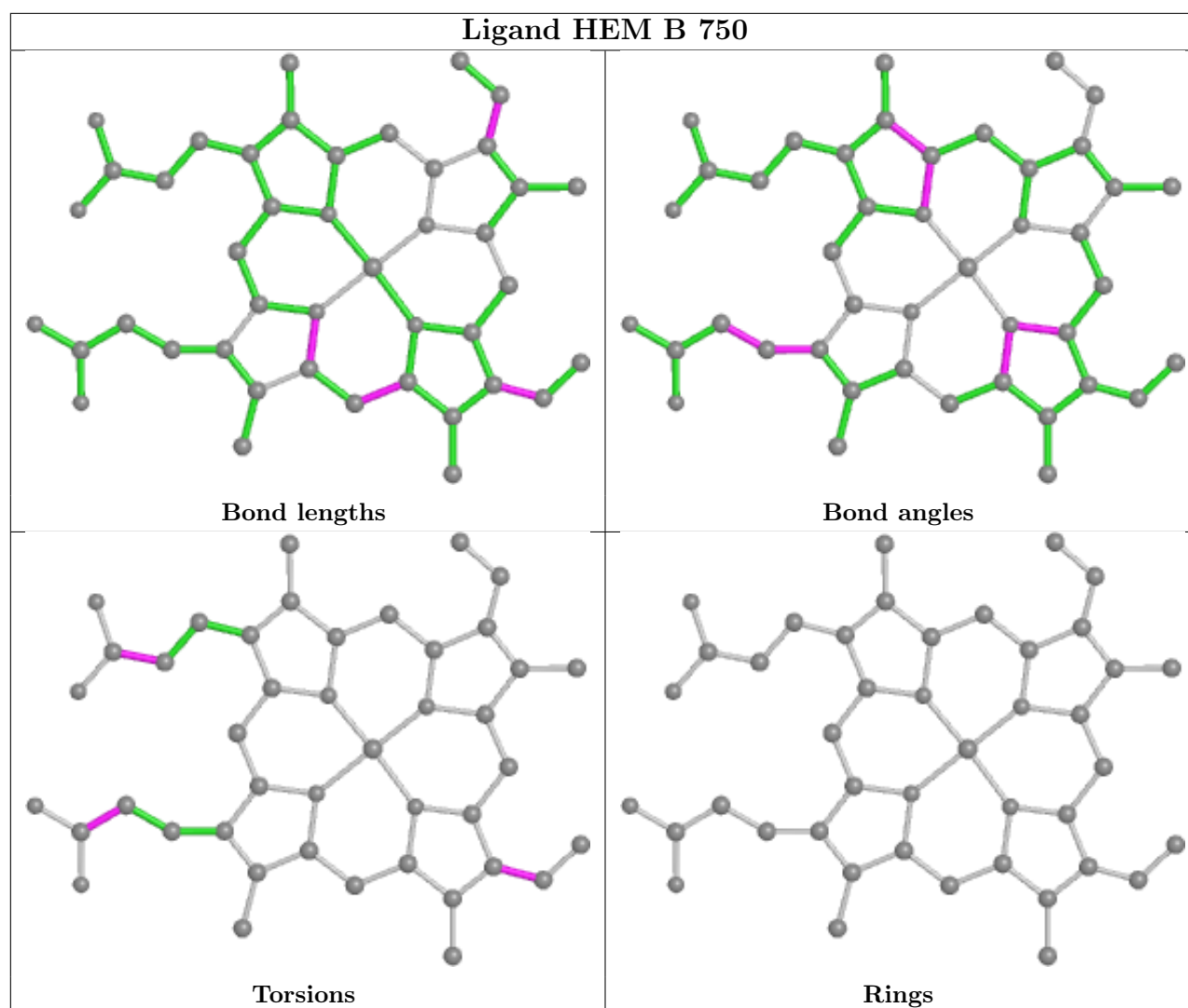
There are no ring outliers.

5 monomers are involved in 12 short contacts:

Mol	Chain	Res	Type	Clashes	Symm-Clashes
6	A	790	INE	1	0
6	B	791	INE	1	0
4	A	750	HEM	2	0
2	A	860	ACT	3	0
4	B	750	HEM	5	0

The following is a two-dimensional graphical depiction of Mogul quality analysis of bond lengths, bond angles, torsion angles, and ring geometry for all instances of the Ligand of Interest. In addition, ligands with molecular weight > 250 and outliers as shown on the validation Tables will also be included. For torsion angles, if less than 5% of the Mogul distribution of torsion angles is within 10 degrees of the torsion angle in question, then that torsion angle is considered an outlier. Any bond that is central to one or more torsion angles identified as an outlier by Mogul will be highlighted in the graph. For rings, the root-mean-square deviation (RMSD) between the ring in question and similar rings identified by Mogul is calculated over all ring torsion angles. If the average RMSD is greater than 60 degrees and the minimal RMSD between the ring in question and any Mogul-identified rings is also greater than 60 degrees, then that ring is considered an outlier. The outliers are highlighted in purple. The color gray indicates Mogul did not find sufficient equivalents in the CSD to analyse the geometry.





## 5.7 Other polymers [i](#)

There are no such residues in this entry.

## 5.8 Polymer linkage issues [i](#)

There are no chain breaks in this entry.



## 6 Fit of model and data

### 6.1 Protein, DNA and RNA chains

In the following table, the column labelled ‘#RSRZ > 2’ contains the number (and percentage) of RSRZ outliers, followed by percent RSRZ outliers for the chain as percentile scores relative to all X-ray entries and entries of similar resolution. The OWAB column contains the minimum, median, 95<sup>th</sup> percentile and maximum values of the occupancy-weighted average B-factor per residue. The column labelled ‘Q < 0.9’ lists the number of (and percentage) of residues with an average occupancy less than 0.9.

Mol	Chain	Analysed	<RSRZ>	#RSRZ>2	OWAB(Å <sup>2</sup> )	Q<0.9
1	A	407/421 (96%)	0.51	36 (8%) 10 13	30, 51, 80, 98	0
1	B	410/421 (97%)	0.27	14 (3%) 45 52	23, 47, 75, 95	0
All	All	817/842 (97%)	0.39	50 (6%) 21 27	23, 49, 78, 98	0

All (50) RSRZ outliers are listed below:

Mol	Chain	Res	Type	RSRZ
1	B	351	LYS	6.1
1	A	352	ASP	4.9
1	B	350	THR	4.4
1	A	715	VAL	4.4
1	A	351	LYS	4.3
1	A	488	PRO	4.1
1	A	299	ARG	4.1
1	B	300	PHE	4.1
1	A	388	ILE	4.0
1	B	352	ASP	3.7
1	A	489	ASP	3.6
1	B	619	ARG	3.4
1	A	716	TRP	3.4
1	A	490	GLY	3.3
1	A	350	THR	3.2
1	A	486	LYS	3.2
1	A	355	PHE	3.0
1	B	329	HIS	3.0
1	B	717	LYS	3.0
1	A	322	LEU	3.0
1	B	349	ARG	3.0
1	B	348	VAL	2.8
1	A	712	ASN	2.8
1	A	370	LYS	2.8

*Continued on next page...*

*Continued from previous page...*

Mol	Chain	Res	Type	RSRZ
1	A	713	THR	2.8
1	A	389	GLU	2.8
1	A	369	ILE	2.7
1	A	469	LYS	2.6
1	A	327	THR	2.5
1	A	311	VAL	2.5
1	A	300	PHE	2.4
1	A	353	GLN	2.4
1	A	487	GLN	2.4
1	A	503	GLU	2.3
1	B	353	GLN	2.3
1	A	618	MET	2.3
1	A	386	LYS	2.2
1	A	338	PRO	2.2
1	B	681	PRO	2.2
1	A	704	PHE	2.2
1	A	572	LEU	2.1
1	B	338	PRO	2.1
1	A	372	PHE	2.1
1	A	415	CYS	2.1
1	A	616	LEU	2.1
1	A	373	GLY	2.1
1	B	415	CYS	2.1
1	A	619	ARG	2.0
1	A	390	SER	2.0
1	B	591	THR	2.0

## 6.2 Non-standard residues in protein, DNA, RNA chains [\(i\)](#)

There are no non-standard protein/DNA/RNA residues in this entry.

## 6.3 Carbohydrates [\(i\)](#)

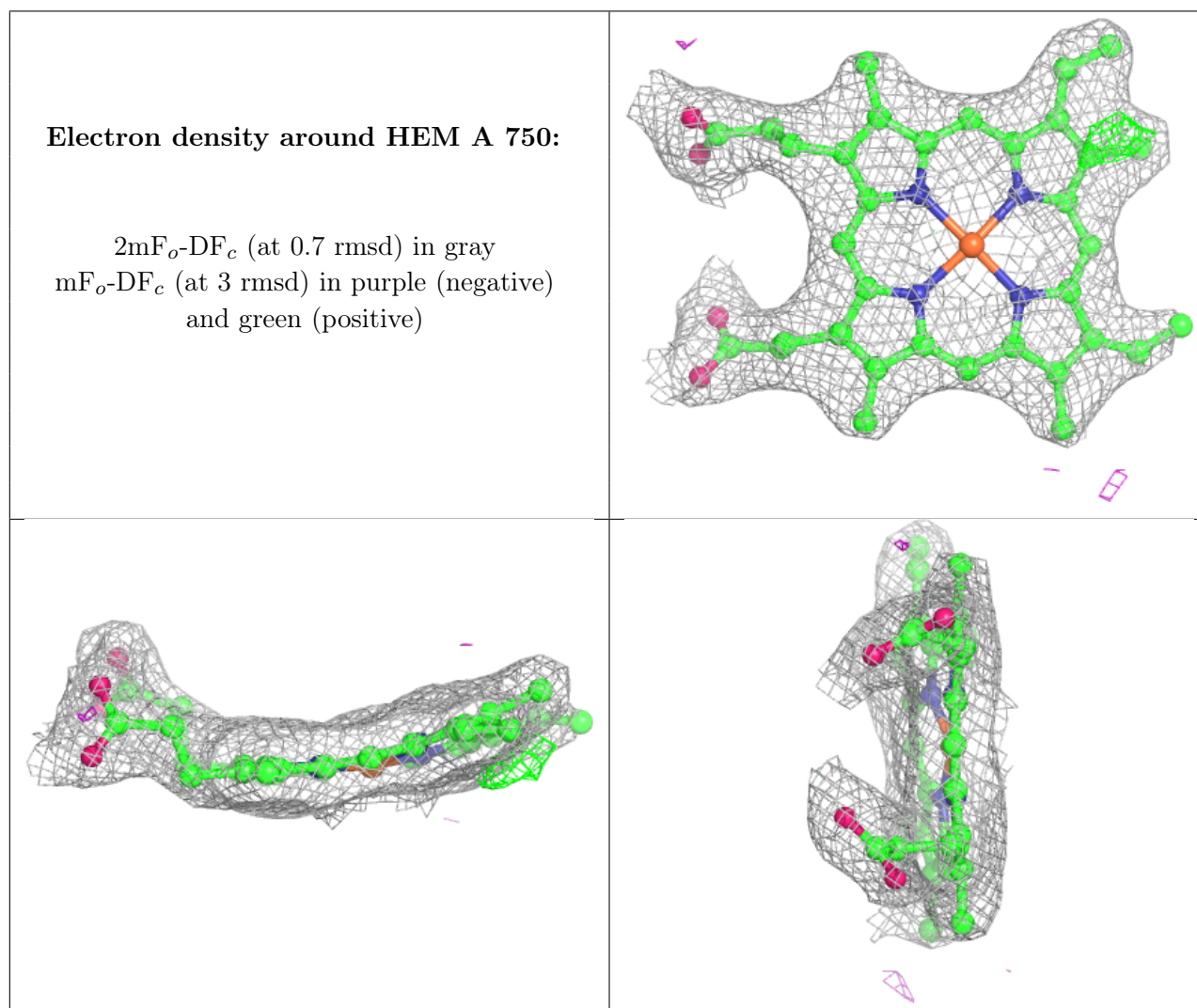
There are no monosaccharides in this entry.

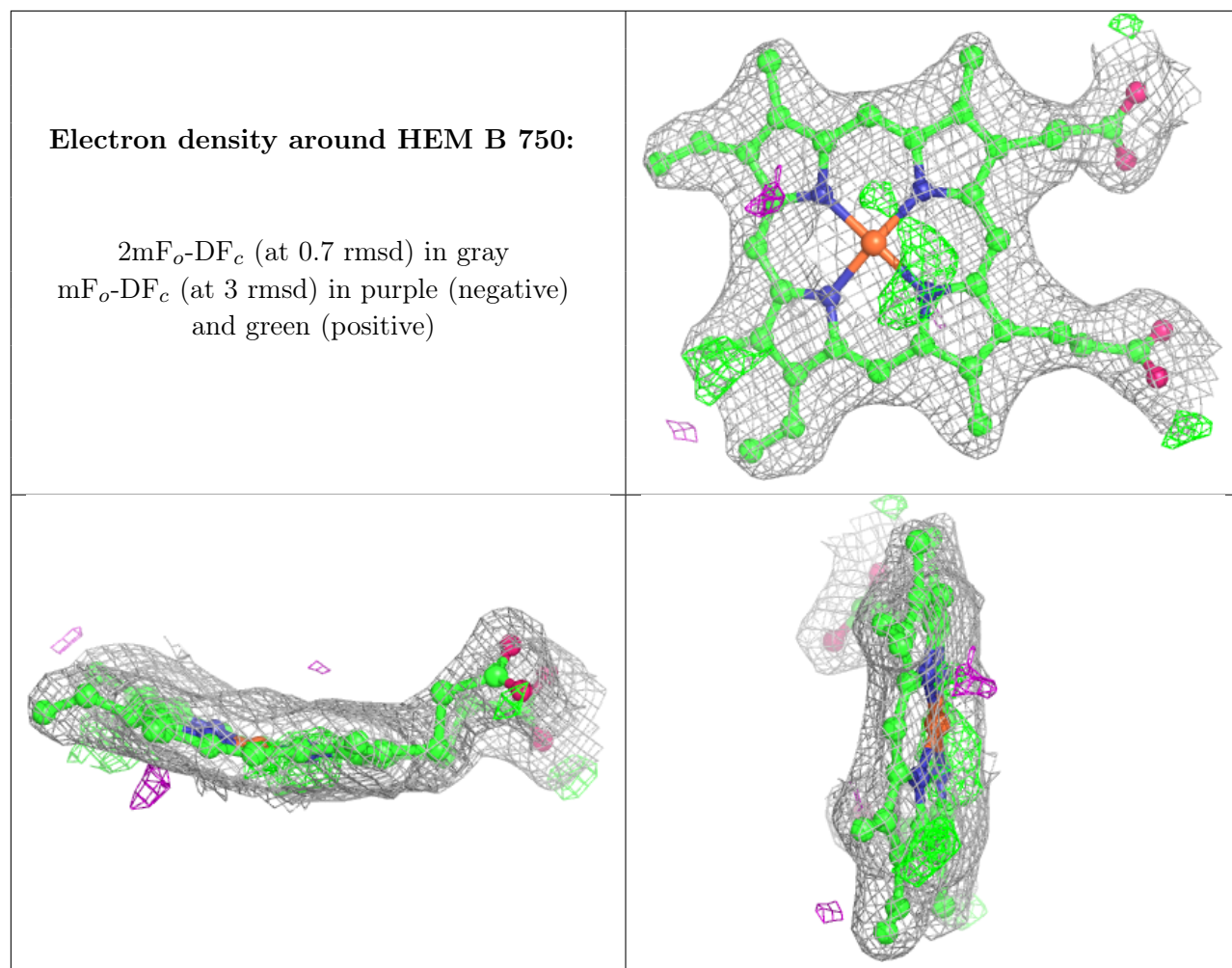
## 6.4 Ligands [\(i\)](#)

In the following table, the Atoms column lists the number of modelled atoms in the group and the number defined in the chemical component dictionary. The B-factors column lists the minimum, median, 95<sup>th</sup> percentile and maximum values of B factors of atoms in the group. The column labelled 'Q< 0.9' lists the number of atoms with occupancy less than 0.9.

Mol	Type	Chain	Res	Atoms	RSCC	RSR	B-factors( $\text{\AA}^2$ )	Q<0.9
5	H4B	A	760	17/17	0.94	0.16	46,49,51,52	0
5	H4B	B	761	17/17	0.94	0.13	39,45,50,50	0
4	HEM	A	750	43/43	0.97	0.20	31,38,45,52	0
4	HEM	B	750	43/43	0.97	0.19	27,33,41,47	0
2	ACT	A	860	4/4	0.98	0.08	41,43,43,47	0
6	INE	A	790	13/13	0.98	0.15	38,48,52,53	0
6	INE	B	791	13/13	0.98	0.17	50,53,56,58	0
2	ACT	B	861	4/4	0.99	0.10	30,31,33,35	0
3	ZN	A	900	1/1	0.99	0.09	44,44,44,44	0

The following is a graphical depiction of the model fit to experimental electron density of all instances of the Ligand of Interest. In addition, ligands with molecular weight > 250 and outliers as shown on the geometry validation Tables will also be included. Each fit is shown from different orientation to approximate a three-dimensional view.





## 6.5 Other polymers [i](#)

There are no such residues in this entry.