



Full wwPDB X-ray Structure Validation Report ⓘ

Feb 4, 2024 – 05:11 AM EST

PDB ID : 1NHX
Title : PEPCK COMPLEX WITH A GTP-COMPETITIVE INHIBITOR
Authors : Foley, L.H.; Wang, P.; Dunten, P.; Ramsey, G.; Gubler, M.-L.; Wertheimer, S.J.
Deposited on : 2002-12-19
Resolution : 2.10 Å(reported)

This is a Full wwPDB X-ray Structure Validation Report for a publicly released PDB entry.

We welcome your comments at validation@mail.wwpdb.org

A user guide is available at

<https://www.wwpdb.org/validation/2017/XrayValidationReportHelp>

with specific help available everywhere you see the ⓘ symbol.

The types of validation reports are described at

<http://www.wwpdb.org/validation/2017/FAQs#types>.

The following versions of software and data (see [references ⓘ](#)) were used in the production of this report:

MolProbity : 4.02b-467
Mogul : 1.8.5 (274361), CSD as541be (2020)
Xtrriage (Phenix) : **NOT EXECUTED**
EDS : **NOT EXECUTED**
buster-report : 1.1.7 (2018)
Percentile statistics : 20191225.v01 (using entries in the PDB archive December 25th 2019)
Ideal geometry (proteins) : Engh & Huber (2001)
Ideal geometry (DNA, RNA) : Parkinson et al. (1996)
Validation Pipeline (wwPDB-VP) : 2.36

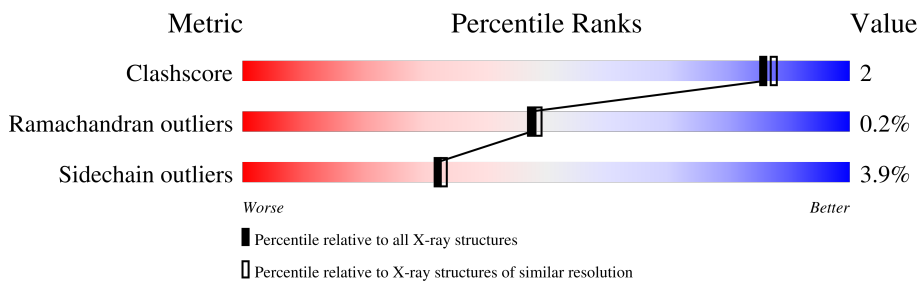
1 Overall quality at a glance

The following experimental techniques were used to determine the structure:

X-RAY DIFFRACTION

The reported resolution of this entry is 2.10 Å.

Percentile scores (ranging between 0-100) for global validation metrics of the entry are shown in the following graphic. The table shows the number of entries on which the scores are based.



Metric	Whole archive (#Entries)	Similar resolution (#Entries, resolution range(Å))
Clashscore	141614	5710 (2.10-2.10)
Ramachandran outliers	138981	5647 (2.10-2.10)
Sidechain outliers	138945	5648 (2.10-2.10)

The table below summarises the geometric issues observed across the polymeric chains and their fit to the electron density. The red, orange, yellow and green segments of the lower bar indicate the fraction of residues that contain outliers for ≥ 3 , 2, 1 and 0 types of geometric quality criteria respectively. A grey segment represents the fraction of residues that are not modelled. The numeric value for each fraction is indicated below the corresponding segment, with a dot representing fractions $\leq 5\%$.

Note EDS was not executed.

Mol	Chain	Length	Quality of chain
1	A	625	 87% 9% ..

2 Entry composition

There are 7 unique types of molecules in this entry. The entry contains 5081 atoms, of which 0 are hydrogens and 0 are deuteriums.

In the tables below, the ZeroOcc column contains the number of atoms modelled with zero occupancy, the AltConf column contains the number of residues with at least one atom in alternate conformation and the Trace column contains the number of residues modelled with at most 2 atoms.

- Molecule 1 is a protein called PHOSPHOENOLPYRUVATE CARBOXYKINASE, CYTOSOLIC.

Mol	Chain	Residues	Atoms					ZeroOcc	AltConf	Trace
			Total	C	N	O	S			
1	A	605	4735	3021	810	869	35	0	0	0

There are 6 discrepancies between the modelled and reference sequences:

Chain	Residue	Modelled	Actual	Comment	Reference
A	-2	GLY	-	cloning artifact	UNP P35558
A	-1	GLU	-	cloning artifact	UNP P35558
A	0	LEU	-	cloning artifact	UNP P35558
A	267	VAL	ILE	variant	UNP P35558
A	586	ASP	GLU	variant	UNP P35558
A	597	VAL	GLU	variant	UNP P35558

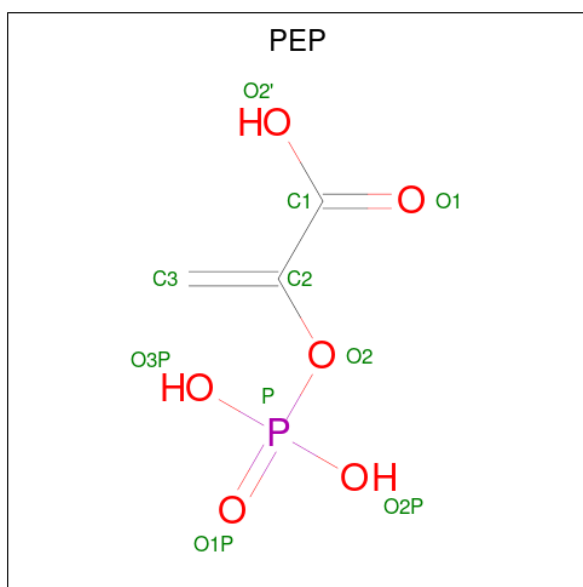
- Molecule 2 is MANGANESE (II) ION (three-letter code: MN) (formula: Mn).

Mol	Chain	Residues	Atoms		ZeroOcc	AltConf
2	A	1	Total	Mn	0	0
			1	1		

- Molecule 3 is SODIUM ION (three-letter code: NA) (formula: Na).

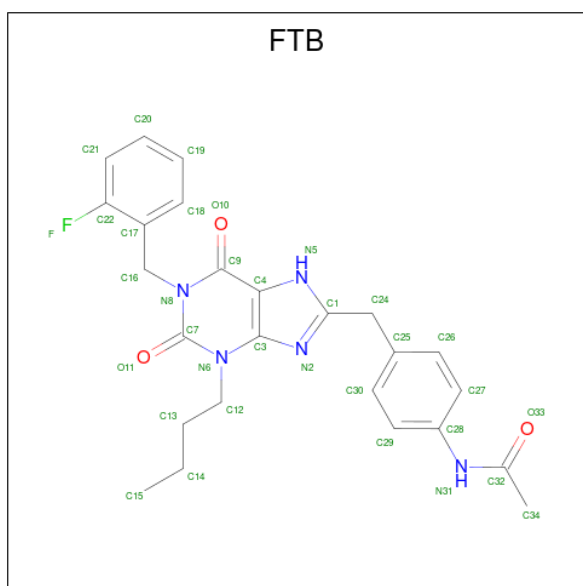
Mol	Chain	Residues	Atoms		ZeroOcc	AltConf
3	A	1	Total	Na	0	0
			1	1		

- Molecule 4 is PHOSPHOENOLPYRUVATE (three-letter code: PEP) (formula: C₃H₅O₆P).



Mol	Chain	Residues	Atoms				ZeroOcc	AltConf
4	A	1	Total	C	O	P	0	0
			10	3	6	1		

- Molecule 5 is N-{4-[1-(2-FLUOROBENZYL)-3-BUTYL-2,6-DIOXO-2,3,6,7-TETRAHYDRO-1H-PURIN-8-YLMETHYL]-PHENYL}-ACETAMIDE (three-letter code: FTB) (formula: $C_{25}H_{26}FN_5O_3$).



Mol	Chain	Residues	Atoms					ZeroOcc	AltConf
5	A	1	Total	C	F	N	O	0	0
			34	25	1	5	3		

- Molecule 6 is 1,2-ETHANEDIOL (three-letter code: EDO) (formula: $C_2H_6O_2$).



Mol	Chain	Residues	Atoms	ZeroOcc	AltConf
6	A	1	Total C O 4 2 2	0	0
6	A	1	Total C O 4 2 2	0	0

- Molecule 7 is water.

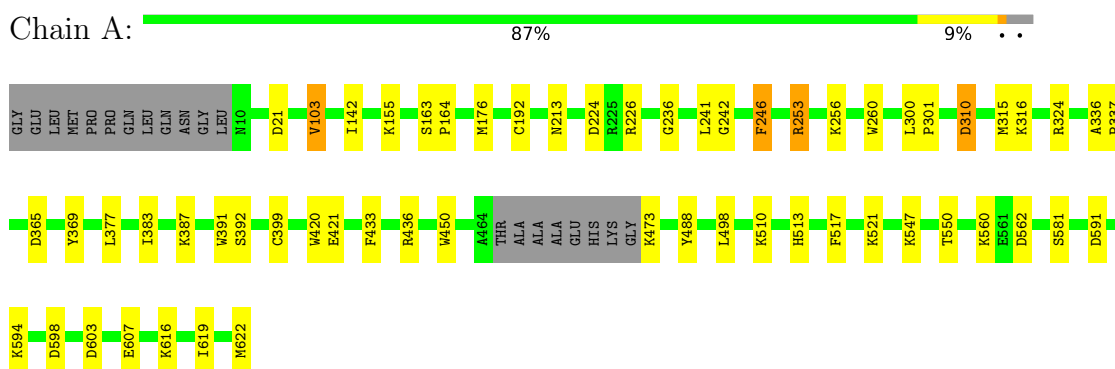
Mol	Chain	Residues	Atoms	ZeroOcc	AltConf
7	A	292	Total O 292 292	0	0

3 Residue-property plots [i](#)

These plots are drawn for all protein, RNA, DNA and oligosaccharide chains in the entry. The first graphic for a chain summarises the proportions of the various outlier classes displayed in the second graphic. The second graphic shows the sequence view annotated by issues in geometry. Residues are color-coded according to the number of geometric quality criteria for which they contain at least one outlier: green = 0, yellow = 1, orange = 2 and red = 3 or more. Stretches of 2 or more consecutive residues without any outlier are shown as a green connector. Residues present in the sample, but not in the model, are shown in grey.

Note EDS was not executed.

- Molecule 1: PHOSPHOENOLPYRUVATE CARBOXYKINASE, CYTOSOLIC



4 Data and refinement statistics

Xtrriage (Phenix) and EDS were not executed - this section is therefore incomplete.

Property	Value	Source
Space group	P 1	Depositor
Cell constants a, b, c, α , β , γ	45.38Å 61.45Å 62.27Å 89.71° 70.24° 72.56°	Depositor
Resolution (Å)	50.00 – 2.10	Depositor
% Data completeness (in resolution range)	91.5 (50.00-2.10)	Depositor
R_{merge}	(Not available)	Depositor
R_{sym}	0.04	Depositor
Refinement program	REFMAC 5.1.24	Depositor
R, R_{free}	0.173 , 0.217	Depositor
Estimated twinning fraction	No twinning to report.	Xtrriage
Total number of atoms	5081	wwPDB-VP
Average B, all atoms (Å ²)	15.0	wwPDB-VP

5 Model quality [i](#)

5.1 Standard geometry [i](#)

Bond lengths and bond angles in the following residue types are not validated in this section: FTB, MN, EDO, NA, PEP

The Z score for a bond length (or angle) is the number of standard deviations the observed value is removed from the expected value. A bond length (or angle) with $|Z| > 5$ is considered an outlier worth inspection. RMSZ is the root-mean-square of all Z scores of the bond lengths (or angles).

Mol	Chain	Bond lengths		Bond angles	
		RMSZ	# Z >5	RMSZ	# Z >5
1	A	0.46	0/4857	0.67	9/6578 (0.1%)

There are no bond length outliers.

All (9) bond angle outliers are listed below:

Mol	Chain	Res	Type	Atoms	Z	Observed(°)	Ideal(°)
1	A	365	ASP	CB-CG-OD2	6.92	124.53	118.30
1	A	562	ASP	CB-CG-OD2	6.30	123.97	118.30
1	A	224	ASP	CB-CG-OD2	5.99	123.69	118.30
1	A	598	ASP	CB-CG-OD2	5.81	123.53	118.30
1	A	21	ASP	CB-CG-OD2	5.77	123.50	118.30
1	A	603	ASP	CB-CG-OD2	5.66	123.39	118.30
1	A	591	ASP	CB-CG-OD2	5.41	123.17	118.30
1	A	310	ASP	CB-CG-OD2	5.37	123.13	118.30
1	A	103	VAL	CB-CA-C	-5.22	101.49	111.40

There are no chirality outliers.

There are no planarity outliers.

5.2 Too-close contacts [i](#)

In the following table, the Non-H and H(model) columns list the number of non-hydrogen atoms and hydrogen atoms in the chain respectively. The H(added) column lists the number of hydrogen atoms added and optimized by MolProbity. The Clashes column lists the number of clashes within the asymmetric unit, whereas Symm-Clashes lists symmetry-related clashes.

Mol	Chain	Non-H	H(model)	H(added)	Clashes	Symm-Clashes
1	A	4735	0	4682	20	0
2	A	1	0	0	0	0

Continued on next page...

Continued from previous page...

Mol	Chain	Non-H	H(model)	H(added)	Clashes	Symm-Clashes
3	A	1	0	0	0	0
4	A	10	0	2	0	0
5	A	34	0	26	1	0
6	A	8	0	12	1	0
7	A	292	0	0	0	0
All	All	5081	0	4722	21	0

The all-atom clashscore is defined as the number of clashes found per 1000 atoms (including hydrogen atoms). The all-atom clashscore for this structure is 2.

All (21) close contacts within the same asymmetric unit are listed below, sorted by their clash magnitude.

Atom-1	Atom-2	Interatomic distance (Å)	Clash overlap (Å)
1:A:619:ILE:O	1:A:622:MET:HG2	1.94	0.68
1:A:246:PHE:C	1:A:246:PHE:HD1	2.08	0.57
1:A:246:PHE:C	1:A:246:PHE:CD1	2.79	0.55
1:A:155:LYS:HB2	1:A:246:PHE:HZ	1.77	0.50
1:A:420:TRP:CE2	1:A:421:GLU:HG3	2.48	0.48
1:A:377:LEU:HD11	1:A:383:ILE:HD11	1.96	0.46
1:A:242:GLY:HA2	1:A:246:PHE:HB3	1.98	0.46
1:A:142:ILE:HG23	1:A:176:MET:CG	2.47	0.44
1:A:260:TRP:HB2	1:A:315:MET:O	2.18	0.44
1:A:253:ARG:HG2	1:A:488:TYR:HB3	1.99	0.43
1:A:163:SER:HA	1:A:164:PRO:HD2	1.91	0.43
5:A:704:FTB:H27	5:A:704:FTB:O33	2.18	0.43
1:A:433:PHE:O	1:A:513:HIS:HA	2.19	0.43
1:A:336:ALA:HB3	1:A:337:PRO:HD3	2.02	0.42
1:A:300:LEU:HA	1:A:301:PRO:HD3	1.90	0.42
1:A:450:TRP:HA	6:A:705:EDO:H22	2.01	0.42
1:A:192:CYS:HB3	1:A:241:LEU:HD12	2.02	0.41
1:A:391:TRP:CD2	1:A:399:CYS:HB3	2.55	0.41
1:A:436:ARG:HG3	1:A:517:PHE:CG	2.56	0.41
1:A:315:MET:HA	1:A:324:ARG:O	2.20	0.41
1:A:498:LEU:HD13	1:A:607:GLU:HB2	2.02	0.40

There are no symmetry-related clashes.

5.3 Torsion angles [i](#)

5.3.1 Protein backbone [i](#)

In the following table, the Percentiles column shows the percent Ramachandran outliers of the chain as a percentile score with respect to all X-ray entries followed by that with respect to entries of similar resolution.

The Analysed column shows the number of residues for which the backbone conformation was analysed, and the total number of residues.

Mol	Chain	Analysed	Favoured	Allowed	Outliers	Percentiles	
1	A	601/625 (96%)	581 (97%)	19 (3%)	1 (0%)	47	49

All (1) Ramachandran outliers are listed below:

Mol	Chain	Res	Type
1	A	236	GLY

5.3.2 Protein sidechains [i](#)

In the following table, the Percentiles column shows the percent sidechain outliers of the chain as a percentile score with respect to all X-ray entries followed by that with respect to entries of similar resolution.

The Analysed column shows the number of residues for which the sidechain conformation was analysed, and the total number of residues.

Mol	Chain	Analysed	Rotameric	Outliers	Percentiles	
1	A	509/523 (97%)	489 (96%)	20 (4%)	32	33

All (20) residues with a non-rotameric sidechain are listed below:

Mol	Chain	Res	Type
1	A	103	VAL
1	A	213	ASN
1	A	226	ARG
1	A	246	PHE
1	A	253	ARG
1	A	256	LYS
1	A	310	ASP
1	A	316	LYS
1	A	369	TYR
1	A	387	LYS

Continued on next page...

Continued from previous page...

Mol	Chain	Res	Type
1	A	392	SER
1	A	473	LYS
1	A	510	LYS
1	A	521	LYS
1	A	547	LYS
1	A	550	THR
1	A	560	LYS
1	A	581	SER
1	A	594	LYS
1	A	616	LYS

Sometimes sidechains can be flipped to improve hydrogen bonding and reduce clashes. All (4) such sidechains are listed below:

Mol	Chain	Res	Type
1	A	99	GLN
1	A	208	ASN
1	A	213	ASN
1	A	297	ASN

5.3.3 RNA [i](#)

There are no RNA molecules in this entry.

5.4 Non-standard residues in protein, DNA, RNA chains [i](#)

There are no non-standard protein/DNA/RNA residues in this entry.

5.5 Carbohydrates [i](#)

There are no monosaccharides in this entry.

5.6 Ligand geometry [i](#)

Of 6 ligands modelled in this entry, 2 are monoatomic - leaving 4 for Mogul analysis.

In the following table, the Counts columns list the number of bonds (or angles) for which Mogul statistics could be retrieved, the number of bonds (or angles) that are observed in the model and the number of bonds (or angles) that are defined in the Chemical Component Dictionary. The Link column lists molecule types, if any, to which the group is linked. The Z score for a bond

length (or angle) is the number of standard deviations the observed value is removed from the expected value. A bond length (or angle) with $|Z| > 2$ is considered an outlier worth inspection. RMSZ is the root-mean-square of all Z scores of the bond lengths (or angles).

Mol	Type	Chain	Res	Link	Bond lengths			Bond angles		
					Counts	RMSZ	# Z > 2	Counts	RMSZ	# Z > 2
6	EDO	A	706	-	3,3,3	0.31	0	2,2,2	0.38	0
4	PEP	A	703	3	9,9,9	4.08	3 (33%)	11,13,13	2.59	4 (36%)
5	FTB	A	704	-	29,37,37	1.08	1 (3%)	38,52,52	1.59	6 (15%)
6	EDO	A	705	-	3,3,3	0.30	0	2,2,2	0.40	0

In the following table, the Chirals column lists the number of chiral outliers, the number of chiral centers analysed, the number of these observed in the model and the number defined in the Chemical Component Dictionary. Similar counts are reported in the Torsion and Rings columns. '-' means no outliers of that kind were identified.

Mol	Type	Chain	Res	Link	Chirals	Torsions	Rings
6	EDO	A	706	-	-	0/1/1/1	-
4	PEP	A	703	3	-	0/9/9/9	-
5	FTB	A	704	-	-	3/16/16/16	0/4/4/4
6	EDO	A	705	-	-	0/1/1/1	-

All (4) bond length outliers are listed below:

Mol	Chain	Res	Type	Atoms	Z	Observed(Å)	Ideal(Å)
4	A	703	PEP	P-O2	9.16	1.73	1.59
4	A	703	PEP	P-O1P	6.39	1.71	1.50
4	A	703	PEP	P-O2P	4.74	1.73	1.54
5	A	704	FTB	C28-N31	2.08	1.45	1.41

All (10) bond angle outliers are listed below:

Mol	Chain	Res	Type	Atoms	Z	Observed(°)	Ideal(°)
4	A	703	PEP	O2'-C1-C2	5.97	124.09	113.91
5	A	704	FTB	C4-C9-N8	-4.94	115.23	120.30
4	A	703	PEP	C3-C2-C1	4.43	130.91	122.73
5	A	704	FTB	C17-C16-N8	-3.88	106.85	113.26
5	A	704	FTB	C12-N6-C3	3.72	122.35	118.95
5	A	704	FTB	C34-C32-N31	3.19	119.67	114.98
5	A	704	FTB	C16-N8-C7	-2.70	114.76	117.92
4	A	703	PEP	O2'-C1-O1	-2.63	117.59	123.61
4	A	703	PEP	O1-C1-C2	-2.31	118.30	121.79
5	A	704	FTB	O33-C32-C34	-2.29	117.80	122.06

There are no chirality outliers.

All (3) torsion outliers are listed below:

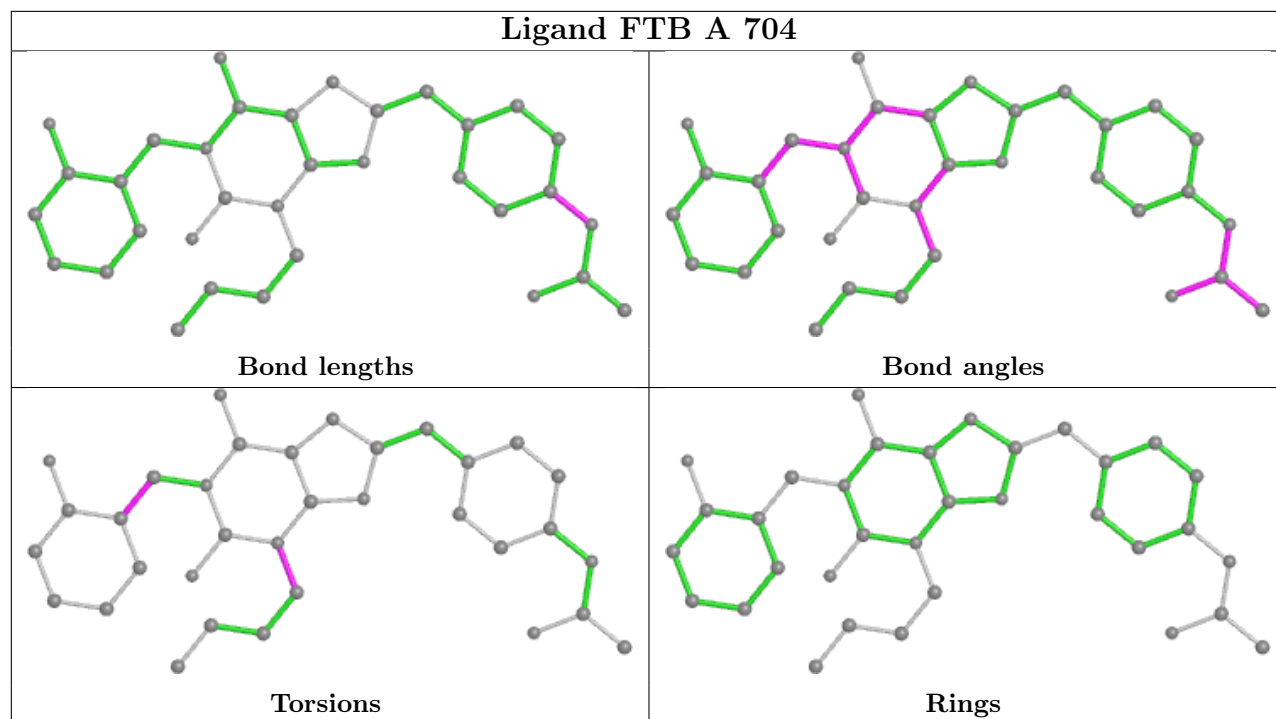
Mol	Chain	Res	Type	Atoms
5	A	704	FTB	N8-C16-C17-C22
5	A	704	FTB	C13-C12-N6-C3
5	A	704	FTB	C13-C12-N6-C7

There are no ring outliers.

2 monomers are involved in 2 short contacts:

Mol	Chain	Res	Type	Clashes	Symm-Clashes
5	A	704	FTB	1	0
6	A	705	EDO	1	0

The following is a two-dimensional graphical depiction of Mogul quality analysis of bond lengths, bond angles, torsion angles, and ring geometry for all instances of the Ligand of Interest. In addition, ligands with molecular weight > 250 and outliers as shown on the validation Tables will also be included. For torsion angles, if less than 5% of the Mogul distribution of torsion angles is within 10 degrees of the torsion angle in question, then that torsion angle is considered an outlier. Any bond that is central to one or more torsion angles identified as an outlier by Mogul will be highlighted in the graph. For rings, the root-mean-square deviation (RMSD) between the ring in question and similar rings identified by Mogul is calculated over all ring torsion angles. If the average RMSD is greater than 60 degrees and the minimal RMSD between the ring in question and any Mogul-identified rings is also greater than 60 degrees, then that ring is considered an outlier. The outliers are highlighted in purple. The color gray indicates Mogul did not find sufficient equivalents in the CSD to analyse the geometry.



5.7 Other polymers [i](#)

There are no such residues in this entry.

5.8 Polymer linkage issues [i](#)

There are no chain breaks in this entry.

6 Fit of model and data

6.1 Protein, DNA and RNA chains

EDS was not executed - this section is therefore empty.

6.2 Non-standard residues in protein, DNA, RNA chains

EDS was not executed - this section is therefore empty.

6.3 Carbohydrates

EDS was not executed - this section is therefore empty.

6.4 Ligands

EDS was not executed - this section is therefore empty.

6.5 Other polymers

EDS was not executed - this section is therefore empty.