



Full wwPDB X-ray Structure Validation Report ⓘ

Feb 4, 2024 – 02:56 AM EST

PDB ID : 1NHT
Title : ENTRAPMENT OF 6-THIOPHOSPHORYL-IMP IN THE ACTIVE SITE OF CRYSTALLINE ADENYLOSUCCINATE SYNTHETASE FROM ESCHERICHIA COLI DATA COLLECTED AT 100K
Authors : Poland, B.W.; Bruns, C.A.; Fromm, H.J.; Honzatko, R.B.
Deposited on : 1997-01-12
Resolution : 2.50 Å(reported)

This is a Full wwPDB X-ray Structure Validation Report for a publicly released PDB entry.

We welcome your comments at validation@mail.wwpdb.org

A user guide is available at

<https://www.wwpdb.org/validation/2017/XrayValidationReportHelp>

with specific help available everywhere you see the ⓘ symbol.

The types of validation reports are described at

<http://www.wwpdb.org/validation/2017/FAQs#types>.

The following versions of software and data (see [references ⓘ](#)) were used in the production of this report:

MolProbity : 4.02b-467
Mogul : 1.8.5 (274361), CSD as541be (2020)
Xtriage (Phenix) : 1.13
EDS : 2.36
buster-report : 1.1.7 (2018)
Percentile statistics : 20191225.v01 (using entries in the PDB archive December 25th 2019)
Refmac : 5.8.0158
CCP4 : 7.0.044 (Gargrove)
Ideal geometry (proteins) : Engh & Huber (2001)
Ideal geometry (DNA, RNA) : Parkinson et al. (1996)
Validation Pipeline (wwPDB-VP) : 2.36

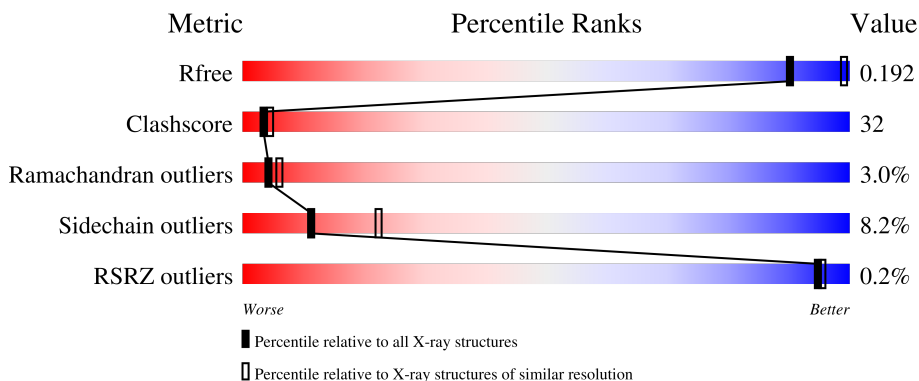
1 Overall quality at a glance

The following experimental techniques were used to determine the structure:

X-RAY DIFFRACTION

The reported resolution of this entry is 2.50 Å.

Percentile scores (ranging between 0-100) for global validation metrics of the entry are shown in the following graphic. The table shows the number of entries on which the scores are based.



Metric	Whole archive (#Entries)	Similar resolution (#Entries, resolution range(Å))
R_{free}	130704	4661 (2.50-2.50)
Clashscore	141614	5346 (2.50-2.50)
Ramachandran outliers	138981	5231 (2.50-2.50)
Sidechain outliers	138945	5233 (2.50-2.50)
RSRZ outliers	127900	4559 (2.50-2.50)

The table below summarises the geometric issues observed across the polymeric chains and their fit to the electron density. The red, orange, yellow and green segments of the lower bar indicate the fraction of residues that contain outliers for ≥ 3 , 2, 1 and 0 types of geometric quality criteria respectively. A grey segment represents the fraction of residues that are not modelled. The numeric value for each fraction is indicated below the corresponding segment, with a dot representing fractions $\leq 5\%$. The upper red bar (where present) indicates the fraction of residues that have poor fit to the electron density. The numeric value is given above the bar.

Mol	Chain	Length	Quality of chain
1	A	431	

The following table lists non-polymeric compounds, carbohydrate monomers and non-standard residues in protein, DNA, RNA chains that are outliers for geometric or electron-density-fit criteria:

Mol	Type	Chain	Res	Chirality	Geometry	Clashes	Electron density
5	PGS	A	440	-	-	X	-

2 Entry composition [i](#)

There are 6 unique types of molecules in this entry. The entry contains 5516 atoms, of which 1677 are hydrogens and 0 are deuteriums.

In the tables below, the ZeroOcc column contains the number of atoms modelled with zero occupancy, the AltConf column contains the number of residues with at least one atom in alternate conformation and the Trace column contains the number of residues modelled with at most 2 atoms.

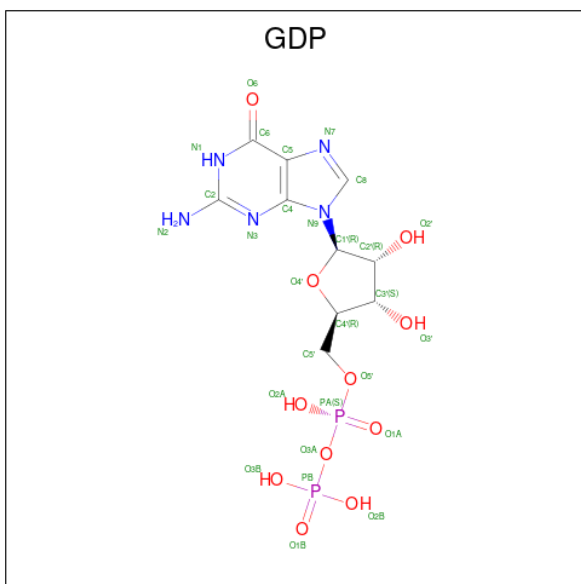
- Molecule 1 is a protein called ADENYLOSUCCINATE SYNTHETASE.

Mol	Chain	Residues	Atoms						ZeroOcc	AltConf	Trace
			Total	C	H	N	O	S			
1	A	431	4067	2092	746	576	640	13	0	0	0

- Molecule 2 is MAGNESIUM ION (three-letter code: MG) (formula: Mg).

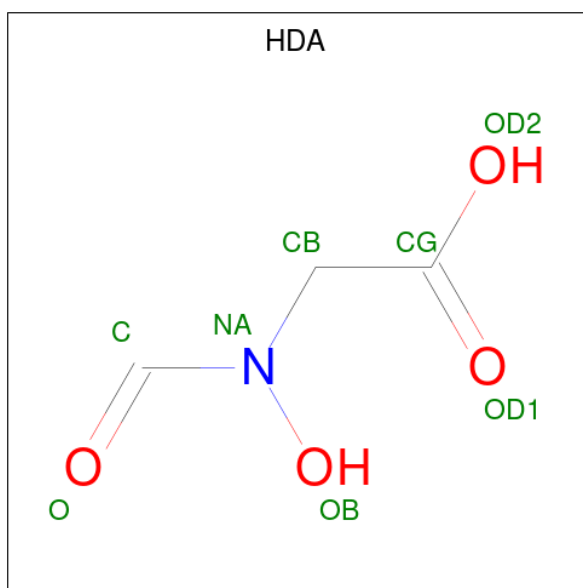
Mol	Chain	Residues	Atoms		ZeroOcc	AltConf
			Total	Mg		
2	A	1	1	1	0	0

- Molecule 3 is GUANOSINE-5'-DIPHOSPHATE (three-letter code: GDP) (formula: C₁₀H₁₅N₅O₁₁P₂).



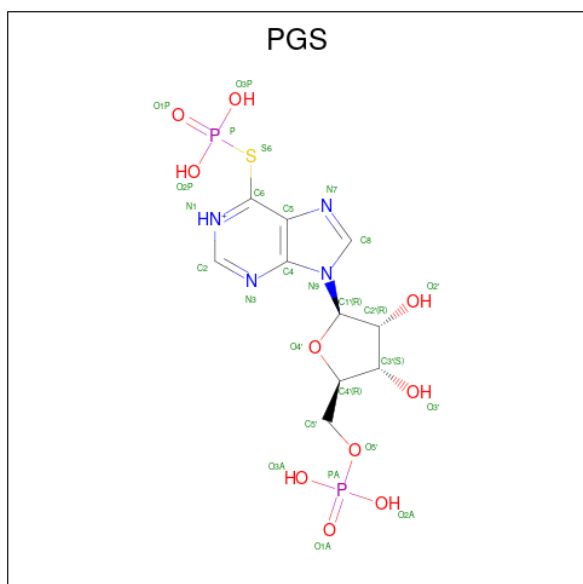
Mol	Chain	Residues	Atoms						ZeroOcc	AltConf
			Total	C	H	N	O	P		
3	A	1	40	10	12	5	11	2	0	0

- Molecule 4 is HADACIDIN (three-letter code: HDA) (formula: $C_3H_5NO_4$).



Mol	Chain	Residues	Atoms					ZeroOcc	AltConf
			Total	C	H	N	O		
4	A	1	9	3	1	1	4	0	0

- Molecule 5 is 2-DEAZO-6-THIOPHOSPHATE GUANOSINE-5'-MONOPHOSPHATE (three-letter code: PGS) (formula: $C_{10}H_{15}N_4O_{10}P_2S$).



Mol	Chain	Residues	Atoms						ZeroOcc	AltConf	
			Total	C	H	N	O	P			S
5	A	1	37	10	10	4	10	2	1	0	0

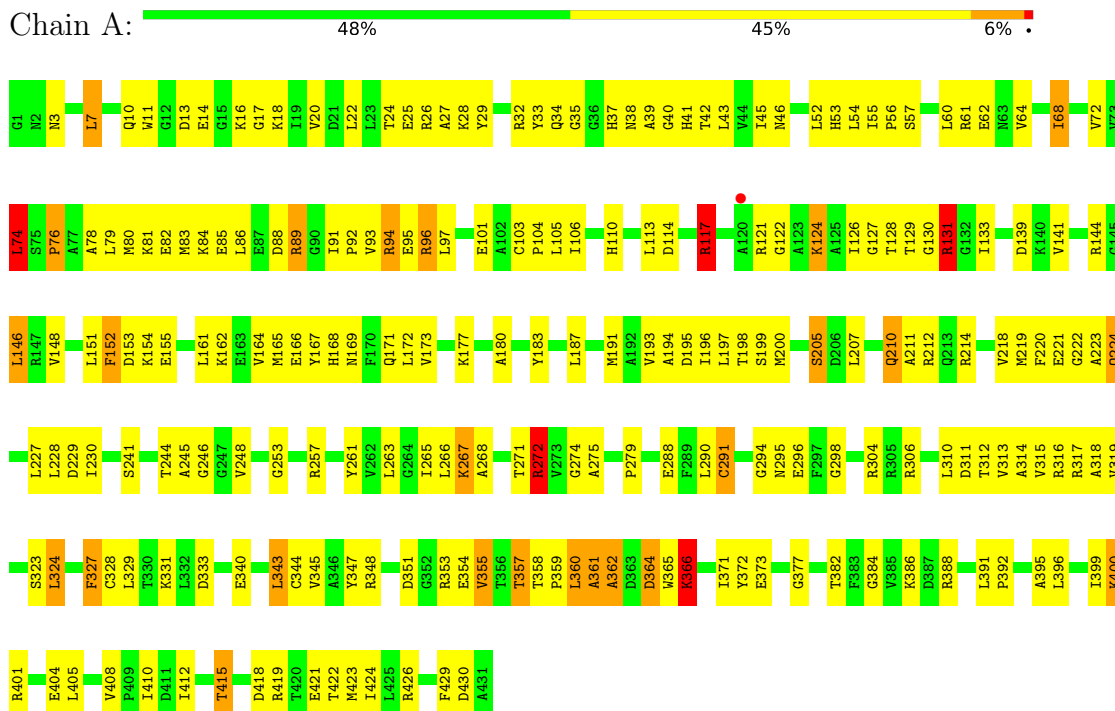
- Molecule 6 is water.

Mol	Chain	Residues	Atoms			ZeroOcc	AltConf
			Total	H	O		
6	A	454	1362	908	454	0	0

3 Residue-property plots

These plots are drawn for all protein, RNA, DNA and oligosaccharide chains in the entry. The first graphic for a chain summarises the proportions of the various outlier classes displayed in the second graphic. The second graphic shows the sequence view annotated by issues in geometry and electron density. Residues are color-coded according to the number of geometric quality criteria for which they contain at least one outlier: green = 0, yellow = 1, orange = 2 and red = 3 or more. A red dot above a residue indicates a poor fit to the electron density ($RSRZ > 2$). Stretches of 2 or more consecutive residues without any outlier are shown as a green connector. Residues present in the sample, but not in the model, are shown in grey.

- Molecule 1: ADENYLOSUCCINATE SYNTHETASE



4 Data and refinement statistics i

Property	Value	Source
Space group	P 32 2 1	Depositor
Cell constants a, b, c, α , β , γ	80.54Å 80.54Å 158.15Å 90.00° 90.00° 120.00°	Depositor
Resolution (Å)	5.00 – 2.50 5.00 – 2.50	Depositor EDS
% Data completeness (in resolution range)	(Not available) (5.00-2.50) 95.4 (5.00-2.50)	Depositor EDS
R_{merge}	0.08	Depositor
R_{sym}	(Not available)	Depositor
$\langle I/\sigma(I) \rangle$ ¹	4.11 (at 2.52Å)	Xtrriage
Refinement program	X-PLOR	Depositor
R, R_{free}	0.206 , 0.255 0.201 , 0.192	Depositor DCC
R_{free} test set	1784 reflections (10.17%)	wwPDB-VP
Wilson B-factor (Å ²)	15.0	Xtrriage
Anisotropy	1.328	Xtrriage
Bulk solvent k_{sol} (e/Å ³), B_{sol} (Å ²)	0.37 , 70.7	EDS
L-test for twinning ²	$\langle L \rangle = 0.47$, $\langle L^2 \rangle = 0.30$	Xtrriage
Estimated twinning fraction	0.045 for -h,-k,l	Xtrriage
F_o, F_c correlation	0.92	EDS
Total number of atoms	5516	wwPDB-VP
Average B, all atoms (Å ²)	12.0	wwPDB-VP

Xtrriage's analysis on translational NCS is as follows:

¹Intensities estimated from amplitudes.

²Theoretical values of $\langle |L| \rangle$, $\langle L^2 \rangle$ for acentric reflections are 0.5, 0.333 respectively for untwinned datasets, and 0.375, 0.2 for perfectly twinned datasets.

5 Model quality [i](#)

5.1 Standard geometry [i](#)

Bond lengths and bond angles in the following residue types are not validated in this section: GDP, HDA, PGS, MG

The Z score for a bond length (or angle) is the number of standard deviations the observed value is removed from the expected value. A bond length (or angle) with $|Z| > 5$ is considered an outlier worth inspection. RMSZ is the root-mean-square of all Z scores of the bond lengths (or angles).

Mol	Chain	Bond lengths		Bond angles	
		RMSZ	# Z >5	RMSZ	# Z >5
1	A	0.67	0/3379	0.91	5/4577 (0.1%)

Chiral center outliers are detected by calculating the chiral volume of a chiral center and verifying if the center is modelled as a planar moiety or with the opposite hand. A planarity outlier is detected by checking planarity of atoms in a peptide group, atoms in a mainchain group or atoms of a sidechain that are expected to be planar.

Mol	Chain	#Chirality outliers	#Planarity outliers
1	A	0	1

There are no bond length outliers.

All (5) bond angle outliers are listed below:

Mol	Chain	Res	Type	Atoms	Z	Observed(°)	Ideal(°)
1	A	7	LEU	CA-CB-CG	7.32	132.14	115.30
1	A	267	LYS	N-CA-C	5.85	126.79	111.00
1	A	117	ARG	NE-CZ-NH2	-5.45	117.57	120.30
1	A	272	ARG	NE-CZ-NH1	5.43	123.02	120.30
1	A	74	LEU	CA-CB-CG	5.35	127.61	115.30

There are no chirality outliers.

All (1) planarity outliers are listed below:

Mol	Chain	Res	Type	Group
1	A	327	PHE	Sidechain

5.2 Too-close contacts

In the following table, the Non-H and H(model) columns list the number of non-hydrogen atoms and hydrogen atoms in the chain respectively. The H(added) column lists the number of hydrogen atoms added and optimized by MolProbity. The Clashes column lists the number of clashes within the asymmetric unit, whereas Symm-Clashes lists symmetry-related clashes.

Mol	Chain	Non-H	H(model)	H(added)	Clashes	Symm-Clashes
1	A	3321	746	3326	217	1
2	A	1	0	0	0	0
3	A	28	12	12	3	0
4	A	8	1	4	2	0
5	A	27	10	11	9	0
6	A	454	908	0	27	3
All	All	3839	1677	3353	217	4

The all-atom clashscore is defined as the number of clashes found per 1000 atoms (including hydrogen atoms). The all-atom clashscore for this structure is 32.

All (217) close contacts within the same asymmetric unit are listed below, sorted by their clash magnitude.

Atom-1	Atom-2	Interatomic distance (Å)	Clash overlap (Å)
1:A:26:ARG:HH11	1:A:26:ARG:HG2	1.30	0.93
1:A:388:ARG:NH1	1:A:396:LEU:HD22	1.89	0.88
1:A:101:GLU:HG2	6:A:623:HOH:O	1.73	0.88
1:A:20:VAL:HG21	1:A:221:GLU:HG3	1.57	0.87
1:A:267:LYS:O	1:A:267:LYS:HG2	1.80	0.82
1:A:54:LEU:HD21	1:A:74:LEU:HD13	1.62	0.81
1:A:91:ILE:HG23	1:A:96:ARG:HH21	1.44	0.81
1:A:68:ILE:HD11	1:A:103:CYS:SG	2.21	0.81
1:A:78:ALA:HB1	6:A:637:HOH:O	1.81	0.79
1:A:173:VAL:O	1:A:177:LYS:HA	1.84	0.77
1:A:68:ILE:O	1:A:68:ILE:HG13	1.86	0.74
1:A:97:LEU:HB3	1:A:200:MET:HE2	1.70	0.73
1:A:366:LYS:HB2	1:A:366:LYS:NZ	2.04	0.73
1:A:80:MET:SD	1:A:83:MET:HE1	2.29	0.72
1:A:16:LYS:HE3	3:A:432:GDP:O2B	1.88	0.72
1:A:32:ARG:HD3	6:A:810:HOH:O	1.90	0.71
1:A:34:GLN:HE22	1:A:223:ALA:H	1.41	0.69
1:A:94:ARG:HA	1:A:200:MET:HE3	1.75	0.68
1:A:366:LYS:HB2	1:A:366:LYS:HZ2	1.57	0.68
1:A:94:ARG:HA	1:A:200:MET:CE	2.25	0.67
1:A:388:ARG:HH12	1:A:396:LEU:HD22	1.58	0.66

Continued on next page...

Continued from previous page...

Atom-1	Atom-2	Interatomic distance (Å)	Clash overlap (Å)
1:A:26:ARG:HG2	1:A:26:ARG:NH1	2.08	0.65
1:A:85:GLU:O	1:A:89:ARG:HG2	1.97	0.65
1:A:26:ARG:HD3	6:A:663:HOH:O	1.95	0.65
1:A:52:LEU:HD13	1:A:57:SER:HA	1.79	0.65
1:A:271:THR:HA	1:A:306:ARG:O	1.96	0.64
1:A:198:THR:HG21	6:A:910:HOH:O	1.97	0.64
1:A:241:SER:HA	6:A:512:HOH:O	1.97	0.64
1:A:3:ASN:HD22	1:A:218:VAL:HB	1.63	0.64
1:A:127:GLY:O	5:A:440:PGS:H3'	1.98	0.63
1:A:319:VAL:HA	1:A:324:LEU:HG	1.81	0.63
1:A:43:LEU:N	1:A:43:LEU:HD12	2.14	0.62
1:A:68:ILE:CD1	1:A:103:CYS:SG	2.87	0.62
1:A:312:THR:HB	1:A:344:CYS:O	1.99	0.62
1:A:3:ASN:ND2	1:A:218:VAL:HB	2.13	0.61
1:A:80:MET:HG3	1:A:193:VAL:HG11	1.81	0.60
1:A:29:TYR:CE2	1:A:207:LEU:HD21	2.36	0.60
1:A:261:TYR:CE1	1:A:263:LEU:HD23	2.36	0.60
1:A:267:LYS:NZ	1:A:271:THR:OG1	2.35	0.59
1:A:83:MET:HE1	1:A:196:ILE:HG21	1.84	0.59
1:A:27:ALA:O	1:A:64:VAL:HG22	2.02	0.59
1:A:97:LEU:HB3	1:A:200:MET:CE	2.32	0.59
1:A:34:GLN:NE2	1:A:223:ALA:H	2.00	0.58
1:A:39:ALA:HA	5:A:440:PGS:S6	2.43	0.58
1:A:52:LEU:CD1	1:A:57:SER:HA	2.33	0.58
1:A:196:ILE:O	1:A:199:SER:HB2	2.03	0.58
1:A:219:MET:HE3	1:A:429:PHE:CE2	2.39	0.58
1:A:81:LYS:O	1:A:85:GLU:HG3	2.04	0.58
1:A:97:LEU:CB	1:A:200:MET:HE2	2.33	0.58
1:A:313:VAL:HG21	1:A:347:TYR:CD1	2.39	0.57
1:A:33:TYR:CD1	1:A:34:GLN:HG3	2.39	0.57
1:A:171:GLN:HG3	1:A:172:LEU:N	2.18	0.57
1:A:205:SER:HB3	6:A:755:HOH:O	2.05	0.57
1:A:32:ARG:NE	1:A:56:PRO:HA	2.20	0.57
1:A:212:ARG:HB2	6:A:555:HOH:O	2.04	0.56
1:A:16:LYS:HD2	1:A:222:GLY:O	2.06	0.56
1:A:94:ARG:HG2	6:A:507:HOH:O	2.05	0.56
1:A:32:ARG:NH1	1:A:53:HIS:O	2.31	0.56
1:A:426:ARG:NH2	1:A:430:ASP:O	2.38	0.56
1:A:263:LEU:HD11	1:A:328:CYS:HB2	1.87	0.56
1:A:16:LYS:NZ	5:A:440:PGS:O2P	2.37	0.55
1:A:22:LEU:HD13	1:A:419:ARG:O	2.06	0.55

Continued on next page...

Continued from previous page...

Atom-1	Atom-2	Interatomic distance (Å)	Clash overlap (Å)
1:A:392:PRO:O	1:A:395:ALA:HB3	2.06	0.55
1:A:84:LYS:HB2	6:A:811:HOH:O	2.06	0.55
1:A:139:ASP:OD2	1:A:168:HIS:HE1	1.90	0.55
1:A:360:LEU:O	1:A:361:ALA:HB2	2.06	0.55
1:A:72:VAL:O	1:A:104:PRO:HD2	2.07	0.54
1:A:84:LYS:NZ	1:A:88:ASP:OD2	2.40	0.54
1:A:62:GLU:HA	1:A:96:ARG:HH11	1.73	0.54
1:A:166:GLU:HG2	6:A:837:HOH:O	2.07	0.54
1:A:329:LEU:CD2	1:A:399:ILE:HG12	2.37	0.54
1:A:191:MET:HE1	1:A:194:ALA:HB2	1.89	0.54
1:A:298:GLY:HA3	4:A:437:HDA:OD1	2.08	0.54
1:A:171:GLN:HG3	1:A:172:LEU:H	1.73	0.54
1:A:327:PHE:CE2	1:A:408:VAL:HB	2.43	0.54
1:A:92:PRO:O	1:A:95:GLU:HB2	2.08	0.54
1:A:101:GLU:HA	1:A:148:VAL:CG1	2.38	0.54
1:A:101:GLU:HA	1:A:148:VAL:HG12	1.89	0.54
1:A:94:ARG:HD2	6:A:800:HOH:O	2.07	0.53
1:A:25:GLU:HB2	1:A:61:ARG:NH2	2.23	0.53
1:A:26:ARG:HH11	1:A:26:ARG:CG	2.09	0.53
1:A:312:THR:HG22	1:A:316:ARG:NH2	2.24	0.53
1:A:14:GLU:HA	1:A:267:LYS:HE3	1.90	0.53
1:A:117:ARG:HG3	6:A:594:HOH:O	2.07	0.53
1:A:317:ARG:HD2	1:A:358:THR:OG1	2.09	0.52
1:A:384:GLY:N	1:A:415:THR:HB	2.25	0.52
1:A:355:VAL:HG13	1:A:357:THR:H	1.74	0.52
1:A:28:LYS:HD3	6:A:777:HOH:O	2.10	0.52
1:A:74:LEU:O	1:A:76:PRO:HD3	2.10	0.52
1:A:312:THR:HA	6:A:949:HOH:O	2.09	0.52
1:A:55:ILE:HD12	1:A:82:GLU:HB3	1.91	0.52
1:A:14:GLU:OE1	1:A:16:LYS:HE2	2.10	0.51
1:A:361:ALA:O	1:A:362:ALA:C	2.48	0.51
1:A:54:LEU:HD22	6:A:657:HOH:O	2.10	0.51
1:A:261:TYR:HE1	1:A:263:LEU:HD23	1.73	0.51
1:A:97:LEU:O	1:A:200:MET:HE2	2.10	0.51
1:A:154:LYS:HD3	1:A:191:MET:SD	2.52	0.50
1:A:37:HIS:CD2	1:A:131:ARG:HD2	2.47	0.50
1:A:312:THR:HG21	1:A:405:LEU:HB3	1.94	0.50
1:A:54:LEU:HD21	1:A:74:LEU:CD1	2.39	0.50
1:A:126:ILE:HG23	6:A:524:HOH:O	2.12	0.50
1:A:16:LYS:NZ	5:A:440:PGS:O1P	2.44	0.50
1:A:399:ILE:HG23	1:A:410:ILE:HD12	1.93	0.50

Continued on next page...

Continued from previous page...

Atom-1	Atom-2	Interatomic distance (Å)	Clash overlap (Å)
1:A:14:GLU:CB	1:A:265:ILE:HG22	2.42	0.49
1:A:42:THR:HG21	6:A:645:HOH:O	2.12	0.49
1:A:205:SER:HB2	1:A:253:GLY:HA3	1.94	0.49
1:A:418:ASP:O	1:A:419:ARG:C	2.50	0.49
1:A:131:ARG:HB2	1:A:133:ILE:HG12	1.92	0.49
1:A:165:MET:SD	1:A:183:TYR:HA	2.52	0.49
1:A:360:LEU:O	1:A:361:ALA:CB	2.60	0.49
1:A:210:GLN:HG3	6:A:932:HOH:O	2.11	0.49
1:A:62:GLU:HB3	1:A:96:ARG:NH1	2.27	0.49
1:A:340:GLU:HA	1:A:377:GLY:N	2.28	0.49
1:A:152:PHE:O	1:A:154:LYS:N	2.45	0.48
1:A:343:LEU:H	1:A:343:LEU:HD23	1.78	0.48
1:A:25:GLU:HB2	1:A:61:ARG:HH21	1.79	0.48
1:A:35:GLY:O	1:A:72:VAL:HG13	2.14	0.48
1:A:40:GLY:HA2	1:A:53:HIS:CD2	2.48	0.48
1:A:266:LEU:HD11	1:A:310:LEU:HD11	1.96	0.48
1:A:345:VAL:HG22	1:A:371:ILE:O	2.13	0.47
1:A:331:LYS:HG2	3:A:432:GDP:C6	2.50	0.47
1:A:20:VAL:HG21	1:A:221:GLU:CG	2.37	0.47
1:A:315:VAL:O	1:A:318:ALA:HB3	2.15	0.46
1:A:274:GLY:HA3	5:A:440:PGS:O3'	2.14	0.46
1:A:294:GLY:O	1:A:295:ASN:C	2.52	0.46
1:A:26:ARG:NH1	1:A:26:ARG:CG	2.74	0.46
1:A:32:ARG:HE	1:A:56:PRO:HA	1.80	0.46
1:A:161:LEU:HD23	1:A:183:TYR:CE1	2.51	0.46
1:A:183:TYR:CZ	1:A:187:LEU:HD22	2.51	0.46
1:A:224:GLN:HG3	5:A:440:PGS:C5	2.46	0.46
1:A:16:LYS:NZ	5:A:440:PGS:P	2.89	0.46
1:A:43:LEU:N	1:A:43:LEU:CD1	2.78	0.46
1:A:86:LEU:HB2	1:A:93:VAL:CG2	2.46	0.45
1:A:151:LEU:O	1:A:152:PHE:O	2.35	0.45
1:A:401:ARG:HD2	1:A:404:GLU:OE1	2.17	0.45
1:A:210:GLN:O	1:A:211:ALA:C	2.53	0.45
1:A:359:PRO:HB3	1:A:364:ASP:O	2.17	0.45
1:A:17:GLY:HA3	1:A:41:HIS:HB3	1.98	0.45
1:A:191:MET:HE1	1:A:194:ALA:CB	2.46	0.45
1:A:11:TRP:CZ2	1:A:227:LEU:HD12	2.52	0.45
1:A:62:GLU:HB3	1:A:96:ARG:HH12	1.80	0.45
1:A:348:ARG:NH1	1:A:354:GLU:HB2	2.32	0.45
1:A:11:TRP:CG	1:A:272:ARG:HG3	2.52	0.45
1:A:229:ASP:O	1:A:230:ILE:C	2.54	0.44

Continued on next page...

Continued from previous page...

Atom-1	Atom-2	Interatomic distance (Å)	Clash overlap (Å)
1:A:33:TYR:CE2	1:A:220:PHE:HB3	2.53	0.44
1:A:267:LYS:O	1:A:268:ALA:HB3	2.18	0.44
1:A:391:LEU:HD11	1:A:423:MET:HE3	1.98	0.44
1:A:224:GLN:NE2	5:A:440:PGS:S6	2.90	0.44
1:A:275:ALA:HB2	6:A:866:HOH:O	2.17	0.44
1:A:323:SER:O	1:A:324:LEU:O	2.35	0.44
1:A:10:GLN:NE2	1:A:266:LEU:HD12	2.32	0.44
1:A:419:ARG:HD2	6:A:704:HOH:O	2.17	0.44
1:A:353:ARG:HB2	1:A:353:ARG:NH1	2.32	0.44
1:A:386:LYS:HE3	1:A:421:GLU:HA	1.99	0.44
1:A:79:LEU:HD23	1:A:197:LEU:CD2	2.48	0.44
1:A:267:LYS:NZ	1:A:271:THR:CG2	2.81	0.44
1:A:94:ARG:HA	1:A:200:MET:HE1	2.00	0.43
1:A:129:THR:HG22	4:A:437:HDA:OD2	2.18	0.43
1:A:130:GLY:C	1:A:131:ARG:O	2.56	0.43
1:A:191:MET:CE	1:A:191:MET:HA	2.47	0.43
1:A:304:ARG:HD3	6:A:882:HOH:O	2.18	0.43
1:A:267:LYS:HZ2	1:A:271:THR:HG23	1.83	0.43
1:A:106:ILE:HA	1:A:110:HIS:ND1	2.33	0.43
1:A:38:ASN:ND2	1:A:133:ILE:HG13	2.33	0.43
1:A:25:GLU:CB	1:A:61:ARG:HH21	2.31	0.43
1:A:113:LEU:HD11	1:A:168:HIS:CD2	2.54	0.43
1:A:22:LEU:HD21	1:A:424:ILE:HD11	2.01	0.43
1:A:80:MET:SD	1:A:83:MET:CE	3.03	0.43
1:A:343:LEU:HD23	1:A:343:LEU:N	2.34	0.43
1:A:353:ARG:HB3	1:A:353:ARG:CZ	2.49	0.43
1:A:113:LEU:O	1:A:117:ARG:HG2	2.19	0.43
1:A:124:LYS:HE2	1:A:124:LYS:HB2	1.92	0.43
1:A:244:THR:O	1:A:246:GLY:N	2.52	0.43
1:A:121:ARG:O	1:A:124:LYS:HD3	2.19	0.43
1:A:311:ASP:HA	1:A:344:CYS:HB3	2.00	0.43
1:A:328:CYS:HA	1:A:412:ILE:O	2.19	0.43
1:A:426:ARG:HG2	6:A:801:HOH:O	2.18	0.43
1:A:291:CYS:HA	1:A:296:GLU:HB2	2.01	0.42
1:A:313:VAL:HB	1:A:347:TYR:CE1	2.54	0.42
1:A:314:ALA:HA	1:A:358:THR:HG21	2.00	0.42
1:A:68:ILE:HG23	1:A:97:LEU:HD11	2.01	0.42
1:A:139:ASP:OD2	1:A:168:HIS:CE1	2.72	0.42
1:A:324:LEU:CD1	1:A:327:PHE:CE1	3.02	0.42
1:A:382:THR:HG22	1:A:392:PRO:HD2	2.01	0.42
1:A:128:THR:HA	5:A:440:PGS:H3'	2.01	0.42

Continued on next page...

Continued from previous page...

Atom-1	Atom-2	Interatomic distance (Å)	Clash overlap (Å)
1:A:14:GLU:HB3	1:A:265:ILE:HG22	2.02	0.42
1:A:355:VAL:HG22	6:A:859:HOH:O	2.19	0.42
1:A:214:ARG:HH11	1:A:214:ARG:HD3	1.65	0.42
1:A:11:TRP:CE2	1:A:227:LEU:HD12	2.54	0.42
1:A:164:VAL:O	1:A:167:TYR:HB3	2.20	0.42
1:A:388:ARG:O	1:A:391:LEU:N	2.39	0.42
1:A:13:ASP:O	1:A:267:LYS:HE2	2.20	0.42
1:A:144:ARG:HD3	6:A:754:HOH:O	2.20	0.42
1:A:353:ARG:NH1	1:A:353:ARG:CB	2.83	0.42
1:A:62:GLU:HA	1:A:96:ARG:NH1	2.34	0.42
1:A:210:GLN:O	1:A:214:ARG:HG3	2.19	0.42
1:A:18:LYS:NZ	1:A:422:THR:OG1	2.46	0.41
1:A:84:LYS:HZ3	1:A:88:ASP:CG	2.24	0.41
1:A:195:ASP:HA	1:A:198:THR:CG2	2.49	0.41
1:A:351:ASP:CG	1:A:353:ARG:HH12	2.19	0.41
1:A:92:PRO:HB2	1:A:95:GLU:HB2	2.02	0.41
1:A:267:LYS:HE3	1:A:267:LYS:HB2	1.96	0.41
1:A:359:PRO:HB2	1:A:365:TRP:CD1	2.55	0.41
1:A:323:SER:O	1:A:324:LEU:C	2.58	0.41
1:A:400:LYS:HA	1:A:400:LYS:HD3	1.81	0.41
1:A:13:ASP:N	1:A:13:ASP:OD1	2.52	0.41
1:A:333:ASP:HA	1:A:382:THR:OG1	2.21	0.41
1:A:45:ILE:HG12	1:A:419:ARG:CZ	2.51	0.40
1:A:169:ASN:OD1	1:A:180:ALA:HB1	2.21	0.40
1:A:331:LYS:HG2	3:A:432:GDP:C5	2.56	0.40
1:A:228:LEU:HD21	6:A:699:HOH:O	2.20	0.40
1:A:295:ASN:HB3	6:A:582:HOH:O	2.21	0.40
1:A:24:THR:O	1:A:25:GLU:C	2.60	0.40
1:A:105:LEU:HD12	1:A:146:LEU:HB3	2.02	0.40
1:A:45:ILE:CD1	1:A:60:LEU:HD12	2.52	0.40
1:A:290:LEU:HD23	1:A:290:LEU:HA	1.89	0.40
1:A:121:ARG:O	1:A:122:GLY:C	2.59	0.40

All (4) symmetry-related close contacts are listed below. The label for Atom-2 includes the symmetry operator and encoded unit-cell translations to be applied.

Atom-1	Atom-2	Interatomic distance (Å)	Clash overlap (Å)
1:A:257:ARG:HH21	1:A:323:SER:O[6_555]	1.50	0.10
6:A:549:HOH:H2	6:A:829:HOH:O[6_555]	1.53	0.07
6:A:608:HOH:O	6:A:888:HOH:H2[6_555]	1.54	0.06
6:A:704:HOH:O	6:A:943:HOH:H2[2_664]	1.58	0.02

5.3 Torsion angles [i](#)

5.3.1 Protein backbone [i](#)

In the following table, the Percentiles column shows the percent Ramachandran outliers of the chain as a percentile score with respect to all X-ray entries followed by that with respect to entries of similar resolution.

The Analysed column shows the number of residues for which the backbone conformation was analysed, and the total number of residues.

Mol	Chain	Analysed	Favoured	Allowed	Outliers	Percentiles
1	A	429/431 (100%)	380 (89%)	36 (8%)	13 (3%)	4 6

All (13) Ramachandran outliers are listed below:

Mol	Chain	Res	Type
1	A	152	PHE
1	A	361	ALA
1	A	245	ALA
1	A	366	LYS
1	A	153	ASP
1	A	224	GLN
1	A	372	TYR
1	A	131	ARG
1	A	324	LEU
1	A	362	ALA
1	A	373	GLU
1	A	364	ASP
1	A	248	VAL

5.3.2 Protein sidechains [i](#)

In the following table, the Percentiles column shows the percent sidechain outliers of the chain as a percentile score with respect to all X-ray entries followed by that with respect to entries of similar resolution.

The Analysed column shows the number of residues for which the sidechain conformation was analysed, and the total number of residues.

Mol	Chain	Analysed	Rotameric	Outliers	Percentiles
1	A	353/353 (100%)	324 (92%)	29 (8%)	11 22

All (29) residues with a non-rotameric sidechain are listed below:

Mol	Chain	Res	Type
1	A	7	LEU
1	A	46	ASN
1	A	68	ILE
1	A	74	LEU
1	A	76	PRO
1	A	89	ARG
1	A	94	ARG
1	A	96	ARG
1	A	114	ASP
1	A	117	ARG
1	A	124	LYS
1	A	131	ARG
1	A	141	VAL
1	A	146	LEU
1	A	155	GLU
1	A	162	LYS
1	A	205	SER
1	A	210	GLN
1	A	272	ARG
1	A	279	PRO
1	A	288	GLU
1	A	291	CYS
1	A	343	LEU
1	A	355	VAL
1	A	357	THR
1	A	360	LEU
1	A	366	LYS
1	A	400	LYS
1	A	415	THR

Sometimes sidechains can be flipped to improve hydrogen bonding and reduce clashes. All (4) such sidechains are listed below:

Mol	Chain	Res	Type
1	A	3	ASN
1	A	34	GLN
1	A	168	HIS
1	A	397	ASN

5.3.3 RNA [i](#)

There are no RNA molecules in this entry.

5.4 Non-standard residues in protein, DNA, RNA chains [i](#)

There are no non-standard protein/DNA/RNA residues in this entry.

5.5 Carbohydrates [i](#)

There are no monosaccharides in this entry.

5.6 Ligand geometry [i](#)

Of 4 ligands modelled in this entry, 1 is monoatomic - leaving 3 for Mogul analysis.

In the following table, the Counts columns list the number of bonds (or angles) for which Mogul statistics could be retrieved, the number of bonds (or angles) that are observed in the model and the number of bonds (or angles) that are defined in the Chemical Component Dictionary. The Link column lists molecule types, if any, to which the group is linked. The Z score for a bond length (or angle) is the number of standard deviations the observed value is removed from the expected value. A bond length (or angle) with $|Z| > 2$ is considered an outlier worth inspection. RMSZ is the root-mean-square of all Z scores of the bond lengths (or angles).

Mol	Type	Chain	Res	Link	Bond lengths			Bond angles		
					Counts	RMSZ	# Z > 2	Counts	RMSZ	# Z > 2
5	PGS	A	440	2	24,29,29	2.21	9 (37%)	26,45,45	1.96	6 (23%)
3	GDP	A	432	2	24,30,30	1.74	2 (8%)	30,47,47	1.52	5 (16%)
4	HDA	A	437	2	5,7,7	2.90	1 (20%)	4,8,8	1.17	0

In the following table, the Chirals column lists the number of chiral outliers, the number of chiral centers analysed, the number of these observed in the model and the number defined in the Chemical Component Dictionary. Similar counts are reported in the Torsion and Rings columns. '-' means no outliers of that kind were identified.

Mol	Type	Chain	Res	Link	Chirals	Torsions	Rings
5	PGS	A	440	2	-	0/6/31/31	0/3/3/3
3	GDP	A	432	2	-	3/12/32/32	0/3/3/3
4	HDA	A	437	2	-	1/3/6/6	-

All (12) bond length outliers are listed below:

Mol	Chain	Res	Type	Atoms	Z	Observed(Å)	Ideal(Å)
3	A	432	GDP	C5-C6	-6.52	1.34	1.47
4	A	437	HDA	C-NA	6.26	1.43	1.34
5	A	440	PGS	C6-C5	-4.30	1.36	1.43
5	A	440	PGS	C4-N3	-4.00	1.30	1.35

Continued on next page...

Continued from previous page...

Mol	Chain	Res	Type	Atoms	Z	Observed(Å)	Ideal(Å)
5	A	440	PGS	P-O2P	-3.95	1.46	1.56
5	A	440	PGS	C8-N7	-3.72	1.28	1.34
5	A	440	PGS	C6-N1	3.27	1.37	1.33
5	A	440	PGS	O4'-C1'	2.74	1.44	1.41
5	A	440	PGS	P-O3P	-2.63	1.50	1.56
3	A	432	GDP	C5-C4	-2.60	1.36	1.43
5	A	440	PGS	O4'-C4'	-2.21	1.40	1.45
5	A	440	PGS	PA-O2A	-2.08	1.46	1.54

All (11) bond angle outliers are listed below:

Mol	Chain	Res	Type	Atoms	Z	Observed(°)	Ideal(°)
5	A	440	PGS	C5-C6-N1	-5.47	112.05	122.07
3	A	432	GDP	O5'-C5'-C4'	-4.25	94.35	108.99
5	A	440	PGS	O2'-C2'-C1'	-4.14	95.56	110.85
3	A	432	GDP	PA-O3A-PB	-4.00	119.10	132.83
5	A	440	PGS	O2'-C2'-C3'	3.13	121.94	111.82
5	A	440	PGS	C3'-C2'-C1'	-2.86	96.67	100.98
3	A	432	GDP	C2'-C3'-C4'	-2.60	97.59	102.64
3	A	432	GDP	O3'-C3'-C2'	-2.49	103.78	111.82
5	A	440	PGS	O3'-C3'-C2'	-2.46	103.86	111.82
5	A	440	PGS	C2-N1-C6	2.22	121.27	116.36
3	A	432	GDP	O3'-C3'-C4'	-2.06	105.10	111.05

There are no chirality outliers.

All (4) torsion outliers are listed below:

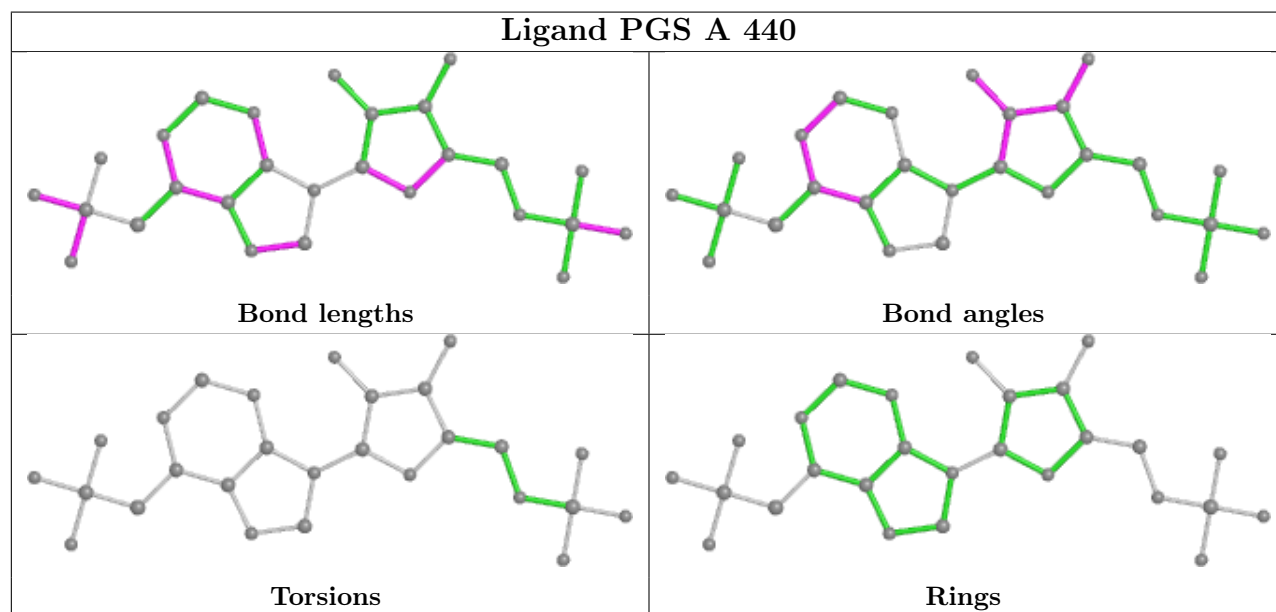
Mol	Chain	Res	Type	Atoms
3	A	432	GDP	C5'-O5'-PA-O3A
3	A	432	GDP	C5'-O5'-PA-O1A
4	A	437	HDA	CG-CB-NA-OB
3	A	432	GDP	O4'-C4'-C5'-O5'

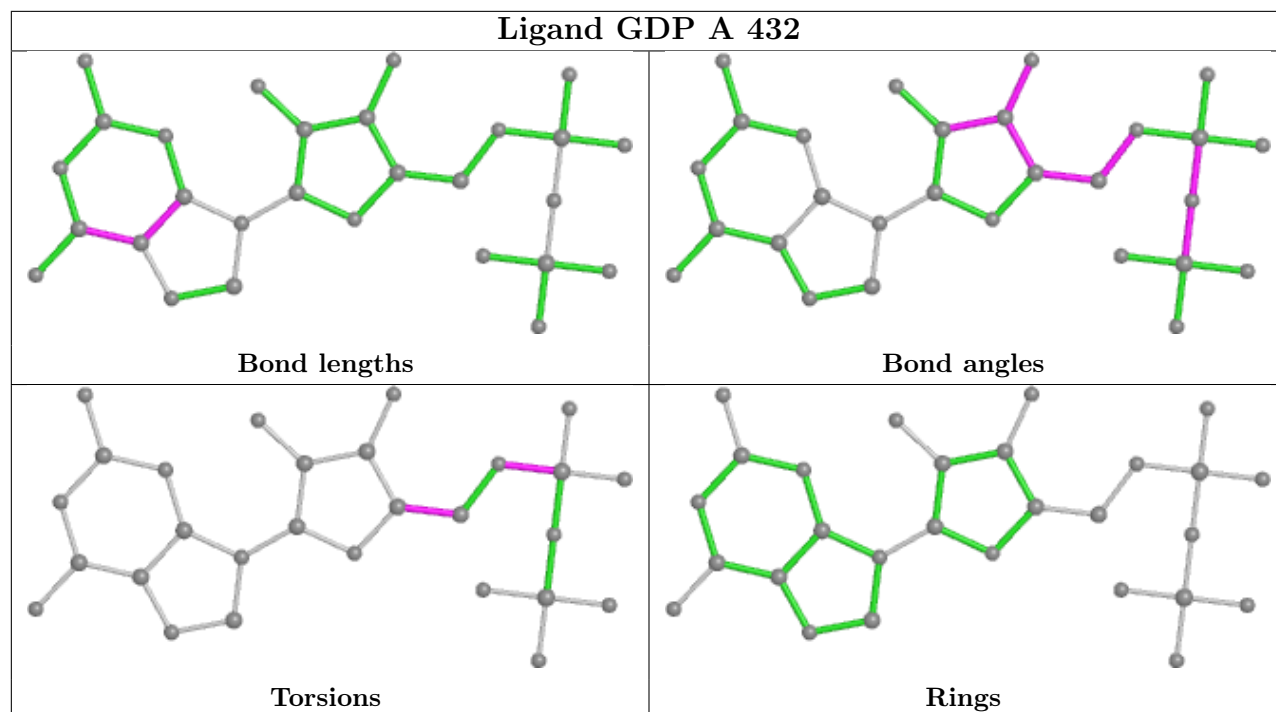
There are no ring outliers.

3 monomers are involved in 14 short contacts:

Mol	Chain	Res	Type	Clashes	Symm-Clashes
5	A	440	PGS	9	0
3	A	432	GDP	3	0
4	A	437	HDA	2	0

The following is a two-dimensional graphical depiction of Mogul quality analysis of bond lengths, bond angles, torsion angles, and ring geometry for all instances of the Ligand of Interest. In addition, ligands with molecular weight > 250 and outliers as shown on the validation Tables will also be included. For torsion angles, if less than 5% of the Mogul distribution of torsion angles is within 10 degrees of the torsion angle in question, then that torsion angle is considered an outlier. Any bond that is central to one or more torsion angles identified as an outlier by Mogul will be highlighted in the graph. For rings, the root-mean-square deviation (RMSD) between the ring in question and similar rings identified by Mogul is calculated over all ring torsion angles. If the average RMSD is greater than 60 degrees and the minimal RMSD between the ring in question and any Mogul-identified rings is also greater than 60 degrees, then that ring is considered an outlier. The outliers are highlighted in purple. The color gray indicates Mogul did not find sufficient equivalents in the CSD to analyse the geometry.





5.7 Other polymers [i](#)

There are no such residues in this entry.

5.8 Polymer linkage issues [i](#)

There are no chain breaks in this entry.

6 Fit of model and data [i](#)

6.1 Protein, DNA and RNA chains [i](#)

In the following table, the column labelled '#RSRZ > 2' contains the number (and percentage) of RSRZ outliers, followed by percent RSRZ outliers for the chain as percentile scores relative to all X-ray entries and entries of similar resolution. The OWAB column contains the minimum, median, 95th percentile and maximum values of the occupancy-weighted average B-factor per residue. The column labelled 'Q < 0.9' lists the number of (and percentage) of residues with an average occupancy less than 0.9.

Mol	Chain	Analysed	<RSRZ>	#RSRZ>2	OWAB(Å ²)	Q<0.9
1	A	431/431 (100%)	-0.45	1 (0%) 95 95	3, 15, 30, 35	0

All (1) RSRZ outliers are listed below:

Mol	Chain	Res	Type	RSRZ
1	A	120	ALA	2.5

6.2 Non-standard residues in protein, DNA, RNA chains [i](#)

There are no non-standard protein/DNA/RNA residues in this entry.

6.3 Carbohydrates [i](#)

There are no monosaccharides in this entry.

6.4 Ligands [i](#)

In the following table, the Atoms column lists the number of modelled atoms in the group and the number defined in the chemical component dictionary. The B-factors column lists the minimum, median, 95th percentile and maximum values of B factors of atoms in the group. The column labelled 'Q < 0.9' lists the number of atoms with occupancy less than 0.9.

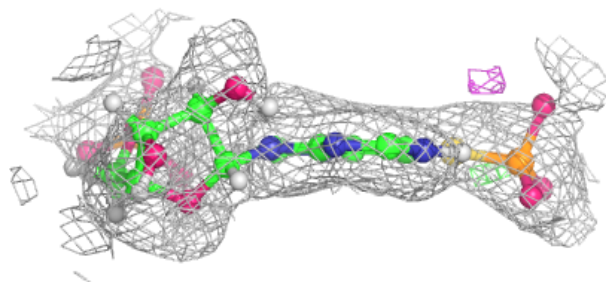
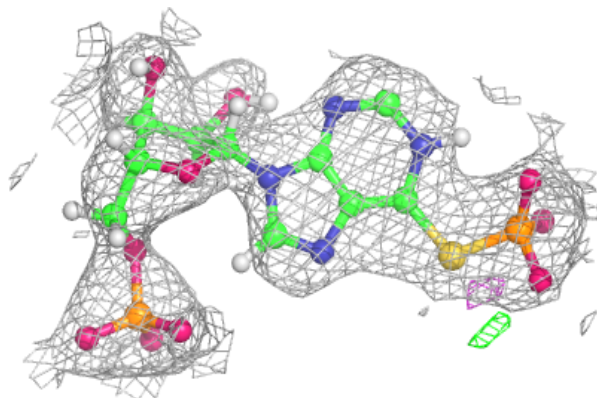
Mol	Type	Chain	Res	Atoms	RSCC	RSR	B-factors(Å ²)	Q<0.9
4	HDA	A	437	8/8	0.96	0.12	0,9,10,11	0
5	PGS	A	440	27/27	0.97	0.11	0,9,12,13	0
2	MG	A	435	1/1	0.98	0.12	12,12,12,12	0
3	GDP	A	432	28/28	0.98	0.08	0,3,9,10	0

The following is a graphical depiction of the model fit to experimental electron density of all instances of the Ligand of Interest. In addition, ligands with molecular weight > 250 and outliers

as shown on the geometry validation Tables will also be included. Each fit is shown from different orientation to approximate a three-dimensional view.

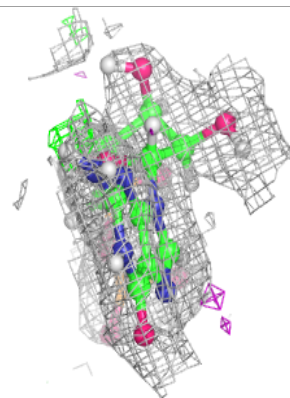
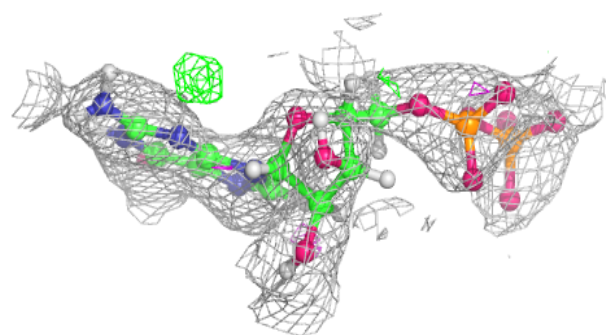
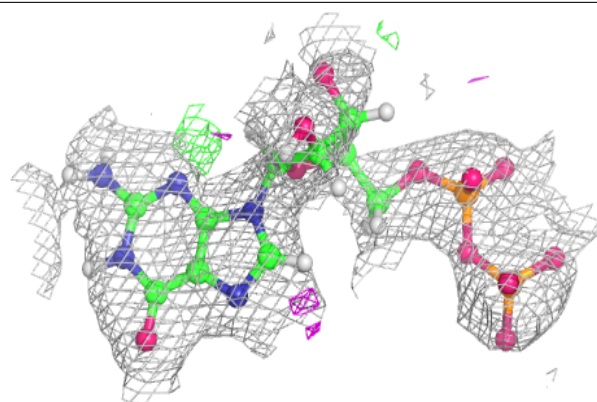
Electron density around PGS A 440:

$2mF_o-DF_c$ (at 0.7 rmsd) in gray
 mF_o-DF_c (at 3 rmsd) in purple (negative)
and green (positive)



Electron density around GDP A 432:

$2mF_o-DF_c$ (at 0.7 rmsd) in gray
 mF_o-DF_c (at 3 rmsd) in purple (negative)
and green (positive)



6.5 Other polymers [i](#)

There are no such residues in this entry.