



Full wwPDB X-ray Structure Validation Report ⓘ

Jun 12, 2024 – 08:52 AM EDT

PDB ID : 1MUO
Title : CRYSTAL STRUCTURE OF AURORA-2, AN ONCOGENIC SERINE-THREONINE KINASE
Authors : Cheetham, G.M.T.; Knegtel, R.M.A.; Coll, J.T.; Renwick, S.B.; Swenson, L.; Weber, P.; Lippke, J.A.; Austen, D.A.
Deposited on : 2002-09-24
Resolution : 2.90 Å(reported)

This is a Full wwPDB X-ray Structure Validation Report for a publicly released PDB entry.

We welcome your comments at validation@mail.wwpdb.org

A user guide is available at

<https://www.wwpdb.org/validation/2017/XrayValidationReportHelp>

with specific help available everywhere you see the ⓘ symbol.

The types of validation reports are described at

<http://www.wwpdb.org/validation/2017/FAQs#types>.

The following versions of software and data (see [references ⓘ](#)) were used in the production of this report:

MolProbity : 4.02b-467
Mogul : 2022.3.0, CSD as543be (2022)
Xtrriage (Phenix) : **NOT EXECUTED**
EDS : **NOT EXECUTED**
buster-report : 1.1.7 (2018)
Percentile statistics : 20191225.v01 (using entries in the PDB archive December 25th 2019)
Ideal geometry (proteins) : Engh & Huber (2001)
Ideal geometry (DNA, RNA) : Parkinson et al. (1996)
Validation Pipeline (wwPDB-VP) : 2.36.2

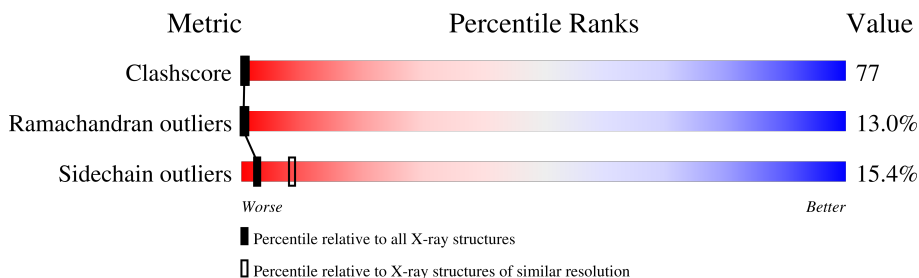
1 Overall quality at a glance

The following experimental techniques were used to determine the structure:

X-RAY DIFFRACTION

The reported resolution of this entry is 2.90 Å.

Percentile scores (ranging between 0-100) for global validation metrics of the entry are shown in the following graphic. The table shows the number of entries on which the scores are based.



Metric	Whole archive (#Entries)	Similar resolution (#Entries, resolution range(Å))
Clashscore	141614	2172 (2.90-2.90)
Ramachandran outliers	138981	2115 (2.90-2.90)
Sidechain outliers	138945	2117 (2.90-2.90)

The table below summarises the geometric issues observed across the polymeric chains and their fit to the electron density. The red, orange, yellow and green segments of the lower bar indicate the fraction of residues that contain outliers for ≥ 3 , 2, 1 and 0 types of geometric quality criteria respectively. A grey segment represents the fraction of residues that are not modelled. The numeric value for each fraction is indicated below the corresponding segment, with a dot representing fractions $\leq 5\%$

Note EDS was not executed.

Mol	Chain	Length	Quality of chain
1	A	297	

2 Entry composition [i](#)

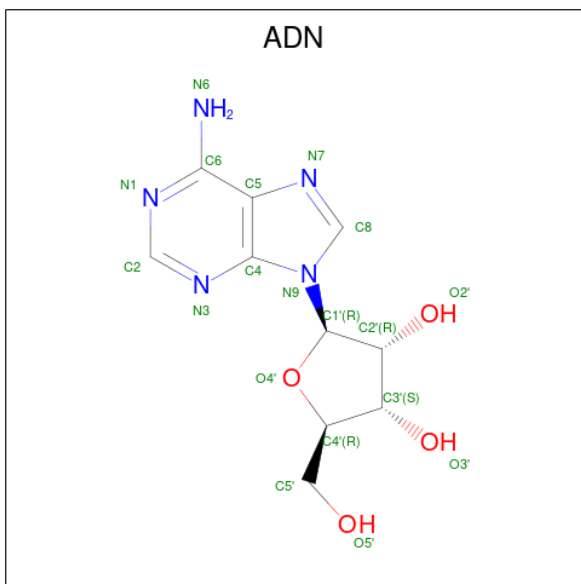
There are 2 unique types of molecules in this entry. The entry contains 2029 atoms, of which 0 are hydrogens and 0 are deuteriums.

In the tables below, the ZeroOcc column contains the number of atoms modelled with zero occupancy, the AltConf column contains the number of residues with at least one atom in alternate conformation and the Trace column contains the number of residues modelled with at most 2 atoms.

- Molecule 1 is a protein called Aurora-related kinase 1.

Mol	Chain	Residues	Atoms					ZeroOcc	AltConf	Trace
			Total	C	N	O	S			
1	A	251	2010	1296	347	361	6	0	0	0

- Molecule 2 is ADENOSINE (three-letter code: ADN) (formula: $C_{10}H_{13}N_5O_4$).



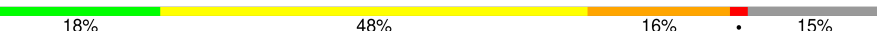
Mol	Chain	Residues	Atoms				ZeroOcc	AltConf
			Total	C	N	O		
2	A	1	19	10	5	4	0	0

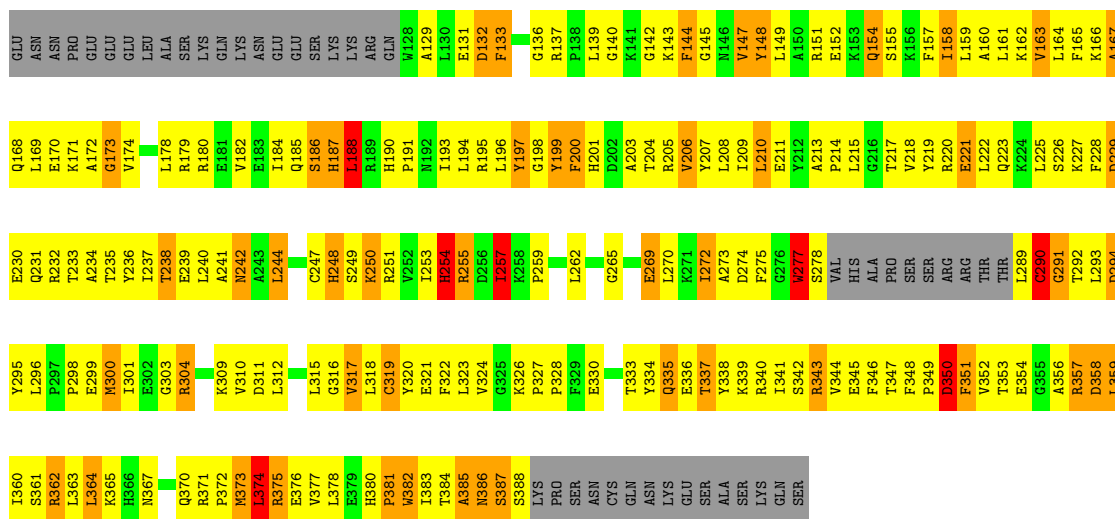
3 Residue-property plots

These plots are drawn for all protein, RNA, DNA and oligosaccharide chains in the entry. The first graphic for a chain summarises the proportions of the various outlier classes displayed in the second graphic. The second graphic shows the sequence view annotated by issues in geometry. Residues are color-coded according to the number of geometric quality criteria for which they contain at least one outlier: green = 0, yellow = 1, orange = 2 and red = 3 or more. Stretches of 2 or more consecutive residues without any outlier are shown as a green connector. Residues present in the sample, but not in the model, are shown in grey.

Note EDS was not executed.

- Molecule 1: Aurora-related kinase 1

Chain A: 



4 Data and refinement statistics

Xtrriage (Phenix) and EDS were not executed - this section is therefore incomplete.

Property	Value	Source
Space group	P 32 2 1	Depositor
Cell constants a, b, c, α , β , γ	86.20Å 86.20Å 75.40Å 90.00° 90.00° 120.00°	Depositor
Resolution (Å)	18.00 – 2.90	Depositor
% Data completeness (in resolution range)	85.9 (18.00-2.90)	Depositor
R_{merge}	0.07	Depositor
R_{sym}	0.06	Depositor
Refinement program	CNS	Depositor
R, R_{free}	0.240 , 0.290	Depositor
Estimated twinning fraction	No twinning to report.	Xtrriage
Total number of atoms	2029	wwPDB-VP
Average B, all atoms (Å ²)	81.0	wwPDB-VP

5 Model quality [i](#)

5.1 Standard geometry [i](#)

Bond lengths and bond angles in the following residue types are not validated in this section: ADN

The Z score for a bond length (or angle) is the number of standard deviations the observed value is removed from the expected value. A bond length (or angle) with $|Z| > 5$ is considered an outlier worth inspection. RMSZ is the root-mean-square of all Z scores of the bond lengths (or angles).

Mol	Chain	Bond lengths		Bond angles	
		RMSZ	# Z >5	RMSZ	# Z >5
1	A	0.76	4/2060 (0.2%)	0.92	2/2793 (0.1%)

All (4) bond length outliers are listed below:

Mol	Chain	Res	Type	Atoms	Z	Observed(Å)	Ideal(Å)
1	A	277	TRP	CB-CG	-7.05	1.37	1.50
1	A	319	CYS	CB-SG	-6.56	1.71	1.82
1	A	290	CYS	CB-SG	5.97	1.92	1.82
1	A	382	TRP	CB-CG	-5.89	1.39	1.50

All (2) bond angle outliers are listed below:

Mol	Chain	Res	Type	Atoms	Z	Observed(°)	Ideal(°)
1	A	277	TRP	CB-CA-C	-5.69	99.03	110.40
1	A	257	ILE	N-CA-C	5.61	126.16	111.00

There are no chirality outliers.

There are no planarity outliers.

5.2 Too-close contacts [i](#)

In the following table, the Non-H and H(model) columns list the number of non-hydrogen atoms and hydrogen atoms in the chain respectively. The H(added) column lists the number of hydrogen atoms added and optimized by MolProbity. The Clashes column lists the number of clashes within the asymmetric unit, whereas Symm-Clashes lists symmetry-related clashes.

Mol	Chain	Non-H	H(model)	H(added)	Clashes	Symm-Clashes
1	A	2010	0	1960	307	2
2	A	19	0	13	2	0

Continued on next page...

Continued from previous page...

Mol	Chain	Non-H	H(model)	H(added)	Clashes	Symm-Clashes
All	All	2029	0	1973	307	2

The all-atom clashscore is defined as the number of clashes found per 1000 atoms (including hydrogen atoms). The all-atom clashscore for this structure is 77.

All (307) close contacts within the same asymmetric unit are listed below, sorted by their clash magnitude.

Atom-1	Atom-2	Interatomic distance (Å)	Clash overlap (Å)
1:A:373:MET:SD	1:A:374:LEU:HG	1.90	1.11
1:A:333:THR:HG23	1:A:336:GLU:H	1.11	1.10
1:A:233:THR:HG21	1:A:323:LEU:CD2	1.83	1.09
1:A:339:LYS:O	1:A:343:ARG:HB3	1.58	1.03
1:A:161:LEU:HD11	1:A:207:TYR:HB3	1.37	1.00
1:A:289:LEU:O	1:A:291:GLY:N	1.94	1.00
1:A:380:HIS:HB3	1:A:383:ILE:HD13	1.42	1.00
1:A:233:THR:HG21	1:A:323:LEU:HD21	1.03	1.00
1:A:233:THR:CG2	1:A:323:LEU:HD21	1.92	1.00
1:A:290:CYS:O	1:A:292:THR:N	1.95	0.99
1:A:254:HIS:O	1:A:255:ARG:HG3	1.62	0.99
1:A:374:LEU:HD12	1:A:375:ARG:H	1.26	0.98
1:A:139:LEU:HD21	1:A:149:LEU:HG	1.41	0.97
1:A:327:PRO:HG2	1:A:330:GLU:HB2	1.47	0.95
1:A:240:LEU:HD21	1:A:257:ILE:HD11	1.46	0.94
1:A:204:THR:HG23	1:A:205:ARG:HG2	1.47	0.93
1:A:320:TYR:HB2	1:A:360:ILE:HD11	1.50	0.93
1:A:161:LEU:HD12	1:A:208:LEU:O	1.69	0.93
1:A:213:ALA:O	2:A:1:ADN:H2	1.70	0.91
1:A:335:GLN:NE2	1:A:335:GLN:H	1.69	0.89
1:A:321:GLU:HG3	1:A:326:LYS:C	1.96	0.85
1:A:354:GLU:HA	1:A:357:ARG:HD2	1.57	0.84
1:A:190:HIS:HB3	1:A:193:ILE:HD12	1.58	0.83
1:A:318:LEU:HG	1:A:322:PHE:CZ	2.14	0.82
1:A:247:CYS:O	1:A:250:LYS:HE2	1.79	0.82
1:A:335:GLN:H	1:A:335:GLN:HE21	1.25	0.81
1:A:129:ALA:HB3	1:A:132:ASP:OD1	1.81	0.80
1:A:333:THR:HG23	1:A:336:GLU:N	1.95	0.80
1:A:217:THR:CG2	1:A:220:ARG:HG2	2.11	0.79
1:A:374:LEU:CD1	1:A:375:ARG:H	1.95	0.79
1:A:161:LEU:HD21	1:A:207:TYR:CD2	2.17	0.79
1:A:208:LEU:HB3	1:A:210:LEU:HD11	1.63	0.78
1:A:354:GLU:O	1:A:354:GLU:HG2	1.84	0.77

Continued on next page...

Continued from previous page...

Atom-1	Atom-2	Interatomic distance (Å)	Clash overlap (Å)
1:A:231:GLN:O	1:A:235:THR:HG22	1.86	0.76
1:A:295:TYR:OH	1:A:321:GLU:OE1	2.04	0.75
1:A:343:ARG:CD	1:A:345:GLU:HB2	2.17	0.75
1:A:221:GLU:CD	1:A:232:ARG:HH22	1.90	0.74
1:A:317:VAL:HG13	1:A:328:PRO:HD2	1.69	0.74
1:A:162:LYS:HB3	1:A:208:LEU:HB2	1.70	0.74
1:A:166:LYS:HB2	1:A:204:THR:O	1.87	0.73
1:A:166:LYS:O	1:A:168:GLN:N	2.22	0.73
1:A:242:ASN:N	1:A:242:ASN:HD22	1.85	0.73
1:A:343:ARG:HD2	1:A:345:GLU:HB2	1.69	0.73
1:A:220:ARG:HD3	1:A:223:GLN:OE1	1.89	0.72
1:A:364:LEU:O	1:A:364:LEU:HD22	1.88	0.72
1:A:301:ILE:HD12	1:A:338:TYR:HD2	1.55	0.72
1:A:320:TYR:HB2	1:A:360:ILE:CD1	2.18	0.71
1:A:254:HIS:O	1:A:255:ARG:CG	2.37	0.71
1:A:229:ASP:O	1:A:233:THR:HG22	1.91	0.70
1:A:272:ILE:C	1:A:272:ILE:HD12	2.11	0.70
1:A:337:THR:O	1:A:341:ILE:N	2.21	0.70
1:A:254:HIS:CE1	1:A:274:ASP:HB2	2.26	0.70
1:A:248:HIS:HE1	1:A:311:ASP:OD2	1.73	0.70
1:A:333:THR:HG22	1:A:336:GLU:HB2	1.73	0.69
1:A:194:LEU:HA	1:A:211:GLU:OE1	1.93	0.69
1:A:317:VAL:O	1:A:320:TYR:HB3	1.93	0.69
1:A:293:LEU:O	1:A:295:TYR:N	2.26	0.69
1:A:364:LEU:O	1:A:364:LEU:HD13	1.93	0.69
1:A:344:VAL:HG12	1:A:344:VAL:O	1.93	0.68
1:A:316:GLY:HA2	1:A:363:LEU:HD23	1.74	0.68
1:A:158:ILE:HD13	1:A:158:ILE:H	1.58	0.68
1:A:208:LEU:CB	1:A:210:LEU:HD11	2.22	0.68
1:A:265:GLY:HA3	1:A:269:GLU:OE2	1.93	0.68
1:A:383:ILE:O	1:A:387:SER:HB2	1.94	0.68
1:A:384:THR:O	1:A:385:ALA:HB3	1.94	0.68
1:A:185:GLN:HA	1:A:188:LEU:HB2	1.76	0.67
1:A:346:PHE:CE2	1:A:364:LEU:HD21	2.29	0.67
1:A:172:ALA:O	1:A:174:VAL:N	2.28	0.67
1:A:250:LYS:NZ	1:A:250:LYS:HB3	2.08	0.67
1:A:359:LEU:HB2	1:A:380:HIS:CE1	2.30	0.67
1:A:377:VAL:HG23	1:A:378:LEU:H	1.59	0.66
1:A:242:ASN:HD21	1:A:378:LEU:HD11	1.60	0.66
1:A:190:HIS:ND1	1:A:191:PRO:HD2	2.11	0.66
1:A:367:ASN:HB3	1:A:370:GLN:HG3	1.78	0.66

Continued on next page...

Continued from previous page...

Atom-1	Atom-2	Interatomic distance (Å)	Clash overlap (Å)
1:A:145:GLY:HA3	1:A:163:VAL:O	1.95	0.66
1:A:242:ASN:ND2	1:A:378:LEU:HD21	2.11	0.66
1:A:165:PHE:HB2	1:A:168:GLN:HG2	1.77	0.65
1:A:215:LEU:HD12	1:A:265:GLY:O	1.95	0.65
1:A:333:THR:OG1	1:A:335:GLN:NE2	2.30	0.65
1:A:250:LYS:HD2	1:A:250:LYS:O	1.95	0.65
1:A:320:TYR:CE2	1:A:324:VAL:HG21	2.31	0.65
1:A:361:SER:HA	1:A:364:LEU:CD1	2.26	0.65
1:A:359:LEU:HD13	1:A:359:LEU:C	2.16	0.65
1:A:220:ARG:HA	1:A:223:GLN:HG2	1.79	0.64
1:A:217:THR:HG23	1:A:220:ARG:H	1.63	0.64
1:A:240:LEU:HD21	1:A:257:ILE:CD1	2.25	0.64
1:A:350:ASP:O	1:A:351:PHE:HB3	1.97	0.64
1:A:136:GLY:N	1:A:149:LEU:O	2.28	0.64
1:A:354:GLU:HA	1:A:357:ARG:CD	2.28	0.63
1:A:164:LEU:N	1:A:164:LEU:HD12	2.12	0.63
1:A:383:ILE:N	1:A:383:ILE:HD12	2.14	0.63
1:A:234:ALA:O	1:A:238:THR:HG22	1.99	0.63
1:A:359:LEU:HD21	1:A:377:VAL:HG12	1.79	0.63
1:A:373:MET:SD	1:A:374:LEU:CG	2.79	0.62
1:A:242:ASN:ND2	1:A:378:LEU:HD11	2.14	0.62
1:A:247:CYS:HA	1:A:250:LYS:CE	2.29	0.62
1:A:377:VAL:HG23	1:A:378:LEU:N	2.15	0.62
1:A:289:LEU:O	1:A:290:CYS:C	2.33	0.62
1:A:229:ASP:O	1:A:233:THR:CG2	2.48	0.61
1:A:333:THR:CG2	1:A:336:GLU:H	2.01	0.61
1:A:359:LEU:HD23	1:A:380:HIS:CG	2.36	0.61
1:A:143:LYS:H	1:A:278:SER:HB2	1.65	0.61
1:A:317:VAL:HG13	1:A:328:PRO:CD	2.29	0.61
1:A:132:ASP:HB2	1:A:133:PHE:CE1	2.36	0.61
1:A:166:LYS:O	1:A:167:ALA:C	2.39	0.61
1:A:190:HIS:CB	1:A:193:ILE:HD12	2.29	0.59
1:A:383:ILE:H	1:A:383:ILE:CD1	2.15	0.59
1:A:365:LYS:HB2	1:A:371:ARG:CZ	2.32	0.59
1:A:210:LEU:N	1:A:210:LEU:HD12	2.17	0.59
1:A:335:GLN:NE2	1:A:335:GLN:N	2.44	0.59
1:A:321:GLU:HG3	1:A:327:PRO:N	2.16	0.59
1:A:356:ALA:O	1:A:360:ILE:HG22	2.03	0.58
1:A:199:TYR:CE2	1:A:201:HIS:HD2	2.21	0.58
1:A:333:THR:CG2	1:A:336:GLU:HB2	2.32	0.58
1:A:161:LEU:HD21	1:A:207:TYR:HD2	1.66	0.58

Continued on next page...

Continued from previous page...

Atom-1	Atom-2	Interatomic distance (Å)	Clash overlap (Å)
1:A:384:THR:O	1:A:385:ALA:CB	2.50	0.58
1:A:293:LEU:HD12	1:A:334:TYR:HD1	1.69	0.58
1:A:383:ILE:HD12	1:A:383:ILE:H	1.69	0.57
1:A:290:CYS:SG	1:A:334:TYR:CD1	2.97	0.57
1:A:241:ALA:O	1:A:244:LEU:HB2	2.05	0.57
1:A:349:PRO:HG2	1:A:352:VAL:HG23	1.86	0.57
1:A:166:LYS:C	1:A:168:GLN:N	2.58	0.57
1:A:158:ILE:O	1:A:159:LEU:HD22	2.05	0.56
1:A:239:GLU:OE2	1:A:270:LEU:HB2	2.05	0.56
1:A:166:LYS:O	1:A:169:LEU:N	2.39	0.56
1:A:242:ASN:HD21	1:A:378:LEU:HD21	1.70	0.56
1:A:293:LEU:HD23	1:A:296:LEU:HD12	1.87	0.56
1:A:139:LEU:CD2	1:A:149:LEU:HG	2.26	0.55
1:A:152:GLU:HG2	1:A:154:GLN:H	1.72	0.55
1:A:346:PHE:HE2	1:A:364:LEU:HD21	1.72	0.55
1:A:290:CYS:O	1:A:291:GLY:C	2.45	0.55
1:A:194:LEU:HD12	1:A:211:GLU:OE1	2.07	0.55
1:A:360:ILE:O	1:A:363:LEU:N	2.26	0.55
1:A:133:PHE:CD1	1:A:133:PHE:N	2.74	0.55
1:A:242:ASN:N	1:A:242:ASN:ND2	2.54	0.55
1:A:233:THR:O	1:A:237:ILE:HG12	2.07	0.54
1:A:374:LEU:HD12	1:A:375:ARG:N	2.10	0.54
1:A:190:HIS:CG	1:A:191:PRO:HD2	2.42	0.54
1:A:235:THR:O	1:A:238:THR:HG23	2.08	0.54
1:A:312:LEU:N	1:A:312:LEU:HD22	2.23	0.54
1:A:182:VAL:O	1:A:186:SER:HB3	2.08	0.54
1:A:348:PHE:CZ	1:A:357:ARG:HA	2.43	0.54
1:A:340:ARG:O	1:A:345:GLU:N	2.36	0.54
1:A:170:GLU:O	1:A:172:ALA:N	2.40	0.53
1:A:387:SER:O	1:A:388:SER:O	2.26	0.53
1:A:337:THR:O	1:A:341:ILE:HG13	2.07	0.53
1:A:340:ARG:HA	1:A:345:GLU:HB3	1.91	0.53
1:A:144:PHE:CG	1:A:277:TRP:O	2.61	0.53
1:A:318:LEU:HG	1:A:322:PHE:CE2	2.43	0.53
1:A:145:GLY:HA3	1:A:164:LEU:HA	1.91	0.53
1:A:170:GLU:C	1:A:172:ALA:H	2.11	0.53
1:A:339:LYS:O	1:A:343:ARG:CB	2.46	0.53
1:A:361:SER:O	1:A:371:ARG:NH2	2.35	0.52
1:A:312:LEU:O	1:A:363:LEU:HG	2.10	0.52
1:A:386:ASN:O	1:A:387:SER:HB2	2.08	0.52
1:A:157:PHE:CD1	1:A:158:ILE:HD13	2.44	0.52

Continued on next page...

Continued from previous page...

Atom-1	Atom-2	Interatomic distance (Å)	Clash overlap (Å)
1:A:327:PRO:CG	1:A:330:GLU:HB2	2.30	0.52
1:A:162:LYS:CG	1:A:208:LEU:HD12	2.39	0.52
1:A:364:LEU:HD22	1:A:364:LEU:C	2.30	0.52
1:A:327:PRO:HG2	1:A:330:GLU:CB	2.30	0.52
1:A:348:PHE:HZ	1:A:360:ILE:CG2	2.23	0.52
1:A:360:ILE:C	1:A:362:ARG:N	2.63	0.51
1:A:200:PHE:CE1	1:A:209:ILE:HD11	2.45	0.51
1:A:383:ILE:N	1:A:383:ILE:CD1	2.73	0.51
1:A:161:LEU:HD12	1:A:208:LEU:C	2.30	0.51
1:A:190:HIS:HB3	1:A:193:ILE:CD1	2.34	0.51
1:A:348:PHE:CZ	1:A:360:ILE:HG21	2.46	0.51
1:A:254:HIS:O	1:A:255:ARG:CB	2.56	0.51
1:A:356:ALA:O	1:A:358:ASP:N	2.44	0.51
1:A:136:GLY:O	1:A:148:TYR:HB3	2.10	0.51
1:A:273:ALA:O	1:A:277:TRP:HH2	1.94	0.51
1:A:360:ILE:C	1:A:362:ARG:H	2.14	0.51
1:A:320:TYR:C	1:A:320:TYR:CD2	2.85	0.50
1:A:320:TYR:CZ	1:A:324:VAL:HG21	2.46	0.50
1:A:343:ARG:NH1	1:A:345:GLU:HG2	2.26	0.50
1:A:165:PHE:HB2	1:A:168:GLN:CG	2.40	0.50
1:A:144:PHE:O	1:A:165:PHE:CD1	2.64	0.50
1:A:348:PHE:HZ	1:A:360:ILE:HG21	1.76	0.50
1:A:360:ILE:HG23	1:A:361:SER:N	2.26	0.50
1:A:172:ALA:O	1:A:173:GLY:C	2.51	0.50
1:A:250:LYS:HB3	1:A:250:LYS:HZ3	1.77	0.49
1:A:220:ARG:HH21	1:A:220:ARG:HG3	1.77	0.49
1:A:321:GLU:HG3	1:A:326:LYS:CA	2.42	0.49
1:A:304:ARG:HG2	1:A:304:ARG:HH11	1.78	0.49
1:A:310:VAL:HG23	1:A:311:ASP:N	2.27	0.49
1:A:361:SER:HA	1:A:364:LEU:HD11	1.95	0.49
1:A:359:LEU:HD23	1:A:380:HIS:CD2	2.48	0.49
1:A:380:HIS:CG	1:A:381:PRO:HD2	2.48	0.49
1:A:217:THR:HG22	1:A:220:ARG:HG2	1.90	0.48
1:A:161:LEU:HD11	1:A:207:TYR:CB	2.25	0.48
1:A:161:LEU:CD1	1:A:207:TYR:HB3	2.25	0.48
1:A:164:LEU:O	1:A:206:VAL:HG13	2.12	0.48
1:A:217:THR:HG22	1:A:220:ARG:CG	2.43	0.48
1:A:196:LEU:HG	1:A:196:LEU:O	2.14	0.48
1:A:196:LEU:O	1:A:197:TYR:C	2.52	0.48
1:A:221:GLU:CG	1:A:232:ARG:HH22	2.27	0.48
1:A:227:LYS:NZ	1:A:351:PHE:CE1	2.79	0.48

Continued on next page...

Continued from previous page...

Atom-1	Atom-2	Interatomic distance (Å)	Clash overlap (Å)
1:A:247:CYS:HA	1:A:250:LYS:NZ	2.29	0.48
1:A:311:ASP:O	1:A:315:LEU:HB2	2.14	0.48
1:A:373:MET:O	1:A:374:LEU:C	2.52	0.48
1:A:235:THR:HB	1:A:387:SER:HA	1.95	0.48
1:A:335:GLN:O	1:A:337:THR:N	2.46	0.48
1:A:140:GLY:HA3	2:A:1:ADN:H4'	1.95	0.47
1:A:354:GLU:CA	1:A:357:ARG:HD2	2.38	0.47
1:A:198:GLY:H	1:A:209:ILE:HB	1.79	0.47
1:A:289:LEU:HD12	1:A:289:LEU:HA	1.80	0.47
1:A:162:LYS:HG2	1:A:208:LEU:HD12	1.95	0.47
1:A:253:ILE:HD12	1:A:253:ILE:N	2.30	0.47
1:A:272:ILE:HD12	1:A:272:ILE:O	2.14	0.47
1:A:158:ILE:C	1:A:159:LEU:HD22	2.34	0.47
1:A:161:LEU:HA	1:A:208:LEU:O	2.15	0.47
1:A:300:MET:O	1:A:303:GLY:N	2.36	0.47
1:A:362:ARG:HH12	1:A:376:GLU:HG2	1.80	0.47
1:A:367:ASN:CB	1:A:370:GLN:HG3	2.44	0.47
1:A:235:THR:HG23	1:A:236:TYR:N	2.30	0.47
1:A:242:ASN:HD22	1:A:242:ASN:H	1.63	0.46
1:A:319:CYS:HA	1:A:322:PHE:CD2	2.51	0.46
1:A:254:HIS:ND1	1:A:274:ASP:OD1	2.49	0.46
1:A:316:GLY:CA	1:A:363:LEU:HD23	2.43	0.46
1:A:380:HIS:C	1:A:382:TRP:H	2.19	0.46
1:A:218:VAL:O	1:A:222:LEU:N	2.42	0.46
1:A:232:ARG:HA	1:A:235:THR:CG2	2.46	0.46
1:A:377:VAL:O	1:A:380:HIS:N	2.34	0.46
1:A:250:LYS:O	1:A:250:LYS:CD	2.64	0.46
1:A:158:ILE:H	1:A:158:ILE:CD1	2.26	0.46
1:A:185:GLN:HG3	1:A:275:PHE:CE2	2.51	0.46
1:A:186:SER:O	1:A:187:HIS:HB2	2.16	0.46
1:A:354:GLU:HA	1:A:357:ARG:HB2	1.98	0.46
1:A:362:ARG:O	1:A:372:PRO:CD	2.63	0.46
1:A:254:HIS:HE1	1:A:274:ASP:HB2	1.76	0.46
1:A:351:PHE:CD1	1:A:351:PHE:C	2.89	0.46
1:A:182:VAL:O	1:A:186:SER:CB	2.64	0.45
1:A:131:GLU:O	1:A:131:GLU:HG2	2.15	0.45
1:A:221:GLU:OE1	1:A:225:LEU:HD13	2.16	0.45
1:A:144:PHE:HB2	1:A:277:TRP:O	2.16	0.45
1:A:147:VAL:HG13	1:A:147:VAL:O	2.16	0.45
1:A:180:ARG:O	1:A:184:ILE:HG13	2.16	0.45
1:A:178:LEU:O	1:A:179:ARG:HB2	2.16	0.45

Continued on next page...

Continued from previous page...

Atom-1	Atom-2	Interatomic distance (Å)	Clash overlap (Å)
1:A:342:SER:O	1:A:344:VAL:HG23	2.17	0.45
1:A:147:VAL:O	1:A:147:VAL:HG22	2.16	0.44
1:A:204:THR:HG23	1:A:205:ARG:N	2.31	0.44
1:A:273:ALA:HB1	1:A:275:PHE:HE1	1.83	0.44
1:A:225:LEU:O	1:A:226:SER:HB3	2.16	0.44
1:A:365:LYS:HB2	1:A:371:ARG:NH2	2.31	0.44
1:A:231:GLN:O	1:A:235:THR:CG2	2.63	0.44
1:A:375:ARG:O	1:A:376:GLU:C	2.55	0.44
1:A:195:ARG:HG2	1:A:196:LEU:N	2.33	0.44
1:A:349:PRO:O	1:A:351:PHE:N	2.48	0.44
1:A:220:ARG:O	1:A:223:GLN:HG2	2.18	0.44
1:A:151:ARG:HA	1:A:157:PHE:O	2.17	0.44
1:A:250:LYS:O	1:A:250:LYS:CG	2.66	0.44
1:A:336:GLU:O	1:A:337:THR:OG1	2.28	0.44
1:A:217:THR:HG23	1:A:220:ARG:HG2	1.96	0.44
1:A:165:PHE:CB	1:A:168:GLN:HG2	2.45	0.44
1:A:179:ARG:H	1:A:182:VAL:HG21	1.82	0.44
1:A:155:SER:C	1:A:157:PHE:N	2.69	0.43
1:A:142:GLY:HA3	1:A:145:GLY:O	2.18	0.43
1:A:244:LEU:O	1:A:247:CYS:HB2	2.18	0.43
1:A:162:LYS:HD2	1:A:208:LEU:CD1	2.49	0.43
1:A:200:PHE:O	1:A:201:HIS:HB3	2.19	0.43
1:A:219:TYR:HA	1:A:259:PRO:HB3	2.00	0.43
1:A:312:LEU:N	1:A:312:LEU:CD2	2.81	0.43
1:A:353:THR:HG23	1:A:356:ALA:HB2	2.00	0.43
1:A:178:LEU:O	1:A:180:ARG:N	2.41	0.43
1:A:205:ARG:HG3	1:A:207:TYR:OH	2.19	0.43
1:A:162:LYS:HD2	1:A:208:LEU:HD12	2.01	0.43
1:A:293:LEU:O	1:A:294:ASP:C	2.57	0.43
1:A:298:PRO:O	1:A:300:MET:N	2.52	0.42
1:A:343:ARG:NH1	1:A:345:GLU:CB	2.82	0.42
1:A:353:THR:HG21	1:A:382:TRP:HE1	1.84	0.42
1:A:170:GLU:C	1:A:172:ALA:N	2.73	0.42
1:A:257:ILE:HD11	1:A:318:LEU:CD2	2.49	0.42
1:A:166:LYS:HG2	1:A:167:ALA:N	2.34	0.42
1:A:363:LEU:HD12	1:A:363:LEU:HA	1.73	0.42
1:A:208:LEU:O	1:A:210:LEU:HD12	2.20	0.42
1:A:218:VAL:HG13	1:A:228:PHE:HZ	1.84	0.42
1:A:272:ILE:C	1:A:272:ILE:CD1	2.78	0.42
1:A:301:ILE:HD12	1:A:338:TYR:CD2	2.44	0.42
1:A:319:CYS:HA	1:A:322:PHE:HD2	1.84	0.42

Continued on next page...

Continued from previous page...

Atom-1	Atom-2	Interatomic distance (Å)	Clash overlap (Å)
1:A:337:THR:HG22	1:A:341:ILE:CD1	2.50	0.42
1:A:159:LEU:HB3	1:A:160:ALA:H	1.51	0.42
1:A:377:VAL:O	1:A:378:LEU:C	2.57	0.42
1:A:344:VAL:HG13	1:A:364:LEU:HD23	2.00	0.41
1:A:179:ARG:H	1:A:182:VAL:CG2	2.33	0.41
1:A:206:VAL:HG23	1:A:207:TYR:N	2.35	0.41
1:A:323:LEU:HD11	1:A:382:TRP:CH2	2.54	0.41
1:A:162:LYS:CD	1:A:208:LEU:HD12	2.51	0.41
1:A:230:GLU:HA	1:A:233:THR:CG2	2.49	0.41
1:A:204:THR:HG23	1:A:205:ARG:H	1.84	0.41
1:A:249:SER:C	1:A:251:ARG:H	2.23	0.41
1:A:213:ALA:HA	1:A:214:PRO:HD2	1.65	0.41
1:A:289:LEU:C	1:A:291:GLY:N	2.69	0.41
1:A:360:ILE:O	1:A:362:ARG:N	2.54	0.41
1:A:164:LEU:HD12	1:A:164:LEU:H	1.83	0.41
1:A:179:ARG:O	1:A:182:VAL:HB	2.21	0.41
1:A:249:SER:OG	1:A:250:LYS:N	2.53	0.41
1:A:371:ARG:HB3	1:A:372:PRO:HD2	2.03	0.41
1:A:371:ARG:HE	1:A:371:ARG:HA	1.86	0.41
1:A:386:ASN:O	1:A:387:SER:CB	2.69	0.41
1:A:356:ALA:C	1:A:358:ASP:N	2.73	0.40
1:A:163:VAL:HB	1:A:207:TYR:CD2	2.56	0.40
1:A:196:LEU:HD12	1:A:209:ILE:O	2.20	0.40
1:A:158:ILE:HD13	1:A:158:ILE:N	2.31	0.40
1:A:220:ARG:HH21	1:A:220:ARG:CG	2.34	0.40
1:A:377:VAL:O	1:A:383:ILE:HG12	2.22	0.40
1:A:257:ILE:HG13	1:A:262:LEU:HD11	2.04	0.40
1:A:290:CYS:C	1:A:292:THR:N	2.66	0.40

All (2) symmetry-related close contacts are listed below. The label for Atom-2 includes the symmetry operator and encoded unit-cell translations to be applied.

Atom-1	Atom-2	Interatomic distance (Å)	Clash overlap (Å)
1:A:300:MET:CE	1:A:300:MET:CE[6_765]	1.56	0.64
1:A:335:GLN:OE1	1:A:342:SER:OG[6_765]	2.17	0.03

5.3 Torsion angles [i](#)

5.3.1 Protein backbone [i](#)

In the following table, the Percentiles column shows the percent Ramachandran outliers of the chain as a percentile score with respect to all X-ray entries followed by that with respect to entries of similar resolution.

The Analysed column shows the number of residues for which the backbone conformation was analysed, and the total number of residues.

Mol	Chain	Analysed	Favoured	Allowed	Outliers	Percentiles
1	A	247/297 (83%)	167 (68%)	48 (19%)	32 (13%)	0 0

All (32) Ramachandran outliers are listed below:

Mol	Chain	Res	Type
1	A	147	VAL
1	A	167	ALA
1	A	171	LYS
1	A	187	HIS
1	A	188	LEU
1	A	255	ARG
1	A	290	CYS
1	A	291	GLY
1	A	294	ASP
1	A	304	ARG
1	A	350	ASP
1	A	351	PHE
1	A	374	LEU
1	A	385	ALA
1	A	173	GLY
1	A	203	ALA
1	A	254	HIS
1	A	257	ILE
1	A	277	TRP
1	A	299	GLU
1	A	357	ARG
1	A	387	SER
1	A	144	PHE
1	A	186	SER
1	A	337	THR
1	A	197	TYR
1	A	309	LYS
1	A	229	ASP

Continued on next page...

Continued from previous page...

Mol	Chain	Res	Type
1	A	317	VAL
1	A	375	ARG
1	A	154	GLN
1	A	381	PRO

5.3.2 Protein sidechains [i](#)

In the following table, the Percentiles column shows the percent sidechain outliers of the chain as a percentile score with respect to all X-ray entries followed by that with respect to entries of similar resolution.

The Analysed column shows the number of residues for which the sidechain conformation was analysed, and the total number of residues.

Mol	Chain	Analysed	Rotameric	Outliers	Percentiles
1	A	208/264 (79%)	176 (85%)	32 (15%)	2 8

All (32) residues with a non-rotameric sidechain are listed below:

Mol	Chain	Res	Type
1	A	132	ASP
1	A	133	PHE
1	A	137	ARG
1	A	148	TYR
1	A	158	ILE
1	A	163	VAL
1	A	188	LEU
1	A	199	TYR
1	A	200	PHE
1	A	206	VAL
1	A	210	LEU
1	A	221	GLU
1	A	238	THR
1	A	242	ASN
1	A	244	LEU
1	A	248	HIS
1	A	250	LYS
1	A	254	HIS
1	A	269	GLU
1	A	272	ILE
1	A	300	MET
1	A	335	GLN

Continued on next page...

Continued from previous page...

Mol	Chain	Res	Type
1	A	343	ARG
1	A	347	THR
1	A	350	ASP
1	A	358	ASP
1	A	359	LEU
1	A	362	ARG
1	A	364	LEU
1	A	373	MET
1	A	374	LEU
1	A	386	ASN

Sometimes sidechains can be flipped to improve hydrogen bonding and reduce clashes. All (10) such sidechains are listed below:

Mol	Chain	Res	Type
1	A	146	ASN
1	A	185	GLN
1	A	192	ASN
1	A	201	HIS
1	A	231	GLN
1	A	242	ASN
1	A	248	HIS
1	A	335	GLN
1	A	370	GLN
1	A	386	ASN

5.3.3 RNA [i](#)

There are no RNA molecules in this entry.

5.4 Non-standard residues in protein, DNA, RNA chains [i](#)

There are no non-standard protein/DNA/RNA residues in this entry.

5.5 Carbohydrates [i](#)

There are no monosaccharides in this entry.

5.6 Ligand geometry

1 ligand is modelled in this entry.

In the following table, the Counts columns list the number of bonds (or angles) for which Mogul statistics could be retrieved, the number of bonds (or angles) that are observed in the model and the number of bonds (or angles) that are defined in the Chemical Component Dictionary. The Link column lists molecule types, if any, to which the group is linked. The Z score for a bond length (or angle) is the number of standard deviations the observed value is removed from the expected value. A bond length (or angle) with $|Z| > 2$ is considered an outlier worth inspection. RMSZ is the root-mean-square of all Z scores of the bond lengths (or angles).

Mol	Type	Chain	Res	Link	Bond lengths			Bond angles		
					Counts	RMSZ	# Z > 2	Counts	RMSZ	# Z > 2
2	ADN	A	1	-	17,21,21	0.63	0	17,31,31	0.74	1 (5%)

In the following table, the Chirals column lists the number of chiral outliers, the number of chiral centers analysed, the number of these observed in the model and the number defined in the Chemical Component Dictionary. Similar counts are reported in the Torsion and Rings columns. '-' means no outliers of that kind were identified.

Mol	Type	Chain	Res	Link	Chirals	Torsions	Rings
2	ADN	A	1	-	-	0/2/22/22	0/3/3/3

There are no bond length outliers.

All (1) bond angle outliers are listed below:

Mol	Chain	Res	Type	Atoms	Z	Observed($^{\circ}$)	Ideal($^{\circ}$)
2	A	1	ADN	C5-C6-N6	2.19	123.64	120.31

There are no chirality outliers.

There are no torsion outliers.

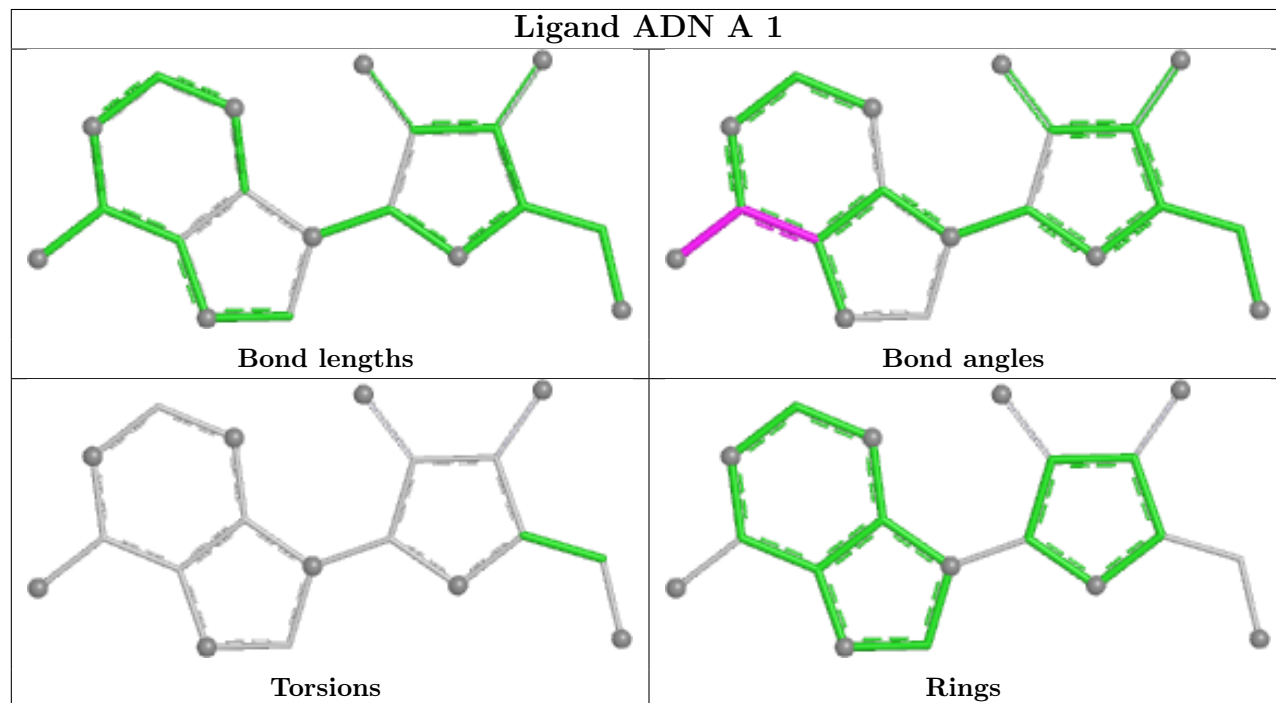
There are no ring outliers.

1 monomer is involved in 2 short contacts:

Mol	Chain	Res	Type	Clashes	Symm-Clashes
2	A	1	ADN	2	0

The following is a two-dimensional graphical depiction of Mogul quality analysis of bond lengths, bond angles, torsion angles, and ring geometry for all instances of the Ligand of Interest. In addition, ligands with molecular weight > 250 and outliers as shown on the validation Tables will also be included. For torsion angles, if less than 5% of the Mogul distribution of torsion angles is within 10 degrees of the torsion angle in question, then that torsion angle is considered an outlier.

Any bond that is central to one or more torsion angles identified as an outlier by Mogul will be highlighted in the graph. For rings, the root-mean-square deviation (RMSD) between the ring in question and similar rings identified by Mogul is calculated over all ring torsion angles. If the average RMSD is greater than 60 degrees and the minimal RMSD between the ring in question and any Mogul-identified rings is also greater than 60 degrees, then that ring is considered an outlier. The outliers are highlighted in purple. The color gray indicates Mogul did not find sufficient equivalents in the CSD to analyse the geometry.



5.7 Other polymers [i](#)

There are no such residues in this entry.

5.8 Polymer linkage issues [i](#)

There are no chain breaks in this entry.

6 Fit of model and data [i](#)

6.1 Protein, DNA and RNA chains [i](#)

EDS was not executed - this section is therefore empty.

6.2 Non-standard residues in protein, DNA, RNA chains [i](#)

EDS was not executed - this section is therefore empty.

6.3 Carbohydrates [i](#)

EDS was not executed - this section is therefore empty.

6.4 Ligands [i](#)

EDS was not executed - this section is therefore empty.

6.5 Other polymers [i](#)

EDS was not executed - this section is therefore empty.