



Full wwPDB X-ray Structure Validation Report ⓘ

Jun 12, 2024 – 03:18 AM EDT

PDB ID : 1M7Z
Title : Structure of Nitric Oxide Synthase Heme Protein from Bacillus Subtilis with N-Hydroxy-Arginine and Tetrahydrofolate Bound
Authors : Pant, K.; Bilwes, A.M.; Adak, S.; Stuehr, D.J.; Crane, B.R.
Deposited on : 2002-07-23
Resolution : 2.14 Å(reported)

This is a Full wwPDB X-ray Structure Validation Report for a publicly released PDB entry.

We welcome your comments at validation@mail.wwpdb.org

A user guide is available at

<https://www.wwpdb.org/validation/2017/XrayValidationReportHelp>

with specific help available everywhere you see the ⓘ symbol.

The types of validation reports are described at

<http://www.wwpdb.org/validation/2017/FAQs#types>.

The following versions of software and data (see [references ⓘ](#)) were used in the production of this report:

MolProbity	:	4.02b-467
Mogul	:	2022.3.0, CSD as543be (2022)
Xtriage (Phenix)	:	NOT EXECUTED
EDS	:	NOT EXECUTED
buster-report	:	1.1.7 (2018)
Percentile statistics	:	20191225.v01 (using entries in the PDB archive December 25th 2019)
Ideal geometry (proteins)	:	Engh & Huber (2001)
Ideal geometry (DNA, RNA)	:	Parkinson et al. (1996)
Validation Pipeline (wwPDB-VP)	:	2.36.2

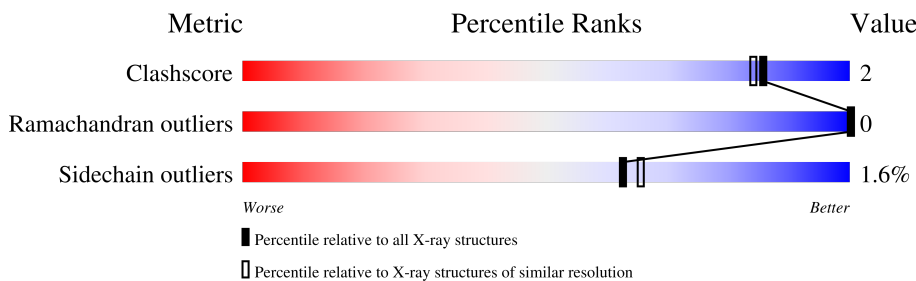
1 Overall quality at a glance

The following experimental techniques were used to determine the structure:

X-RAY DIFFRACTION

The reported resolution of this entry is 2.14 Å.

Percentile scores (ranging between 0-100) for global validation metrics of the entry are shown in the following graphic. The table shows the number of entries on which the scores are based.



Metric	Whole archive (#Entries)	Similar resolution (#Entries, resolution range(Å))
Clashscore	141614	2653 (2.16-2.12)
Ramachandran outliers	138981	2618 (2.16-2.12)
Sidechain outliers	138945	2617 (2.16-2.12)

The table below summarises the geometric issues observed across the polymeric chains and their fit to the electron density. The red, orange, yellow and green segments of the lower bar indicate the fraction of residues that contain outliers for ≥ 3 , 2, 1 and 0 types of geometric quality criteria respectively. A grey segment represents the fraction of residues that are not modelled. The numeric value for each fraction is indicated below the corresponding segment, with a dot representing fractions $\leq 5\%$.

Note EDS was not executed.

Mol	Chain	Length	Quality of chain
1	A	361	<div>93% 7%</div>

2 Entry composition [i](#)

There are 5 unique types of molecules in this entry. The entry contains 3225 atoms, of which 0 are hydrogens and 0 are deuteriums.

In the tables below, the ZeroOcc column contains the number of atoms modelled with zero occupancy, the AltConf column contains the number of residues with at least one atom in alternate conformation and the Trace column contains the number of residues modelled with at most 2 atoms.

- Molecule 1 is a protein called Nitric oxide synthase.

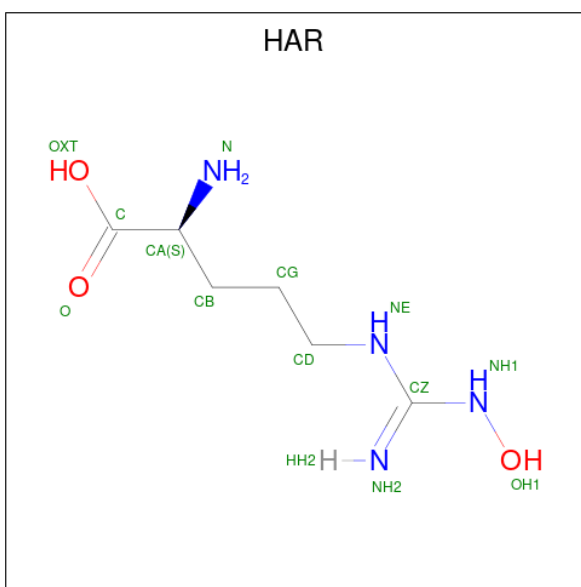
Mol	Chain	Residues	Atoms					ZeroOcc	AltConf	Trace
1	A	361	Total	C	N	O	S	0	0	0
			2933	1865	510	551	7			

- Molecule 2 is PROTOPORPHYRIN IX CONTAINING FE (three-letter code: HEM) (formula: $C_{34}H_{32}FeN_4O_4$).



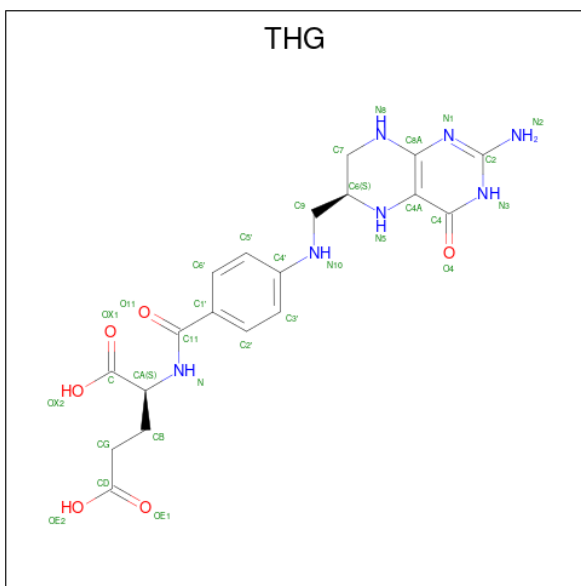
Mol	Chain	Residues	Atoms					ZeroOcc	AltConf
2	A	1	Total	C	Fe	N	O	0	0
			43	34	1	4	4		

- Molecule 3 is N-OMEGA-HYDROXY-L-ARGININE (three-letter code: HAR) (formula: $C_6H_{14}N_4O_3$).



Mol	Chain	Residues	Atoms				ZeroOcc	AltConf
3	A	1	Total	C	N	O	0	0
			13	6	4	3		

- Molecule 4 is (6S)-5,6,7,8-TETRAHYDROFOLATE (three-letter code: THG) (formula: $C_{19}H_{23}N_7O_6$).



Mol	Chain	Residues	Atoms				ZeroOcc	AltConf
4	A	1	Total	C	N	O	0	0
			32	19	7	6		

- Molecule 5 is water.

Mol	Chain	Residues	Atoms		ZeroOcc	AltConf
5	A	204	Total 204	O 204	0	0

3 Residue-property plots [i](#)

These plots are drawn for all protein, RNA, DNA and oligosaccharide chains in the entry. The first graphic for a chain summarises the proportions of the various outlier classes displayed in the second graphic. The second graphic shows the sequence view annotated by issues in geometry. Residues are color-coded according to the number of geometric quality criteria for which they contain at least one outlier: green = 0, yellow = 1, orange = 2 and red = 3 or more. Stretches of 2 or more consecutive residues without any outlier are shown as a green connector. Residues present in the sample, but not in the model, are shown in grey.

Note EDS was not executed.

- Molecule 1: Nitric oxide synthase

Chain A:  93% 7%



4 Data and refinement statistics

Xtriage (Phenix) and EDS were not executed - this section is therefore incomplete.

Property	Value	Source
Space group	P 21 21 2	Depositor
Cell constants a, b, c, α , β , γ	81.08 Å 93.07 Å 62.77 Å 90.00° 90.00° 90.00°	Depositor
Resolution (Å)	29.74 – 2.14	Depositor
% Data completeness (in resolution range)	99.4 (29.74-2.14)	Depositor
R_{merge}	(Not available)	Depositor
R_{sym}	0.09	Depositor
Refinement program	CNS 1.0	Depositor
R, R_{free}	0.212 , 0.239	Depositor
Estimated twinning fraction	No twinning to report.	Xtriage
Total number of atoms	3225	wwPDB-VP
Average B, all atoms (Å ²)	44.0	wwPDB-VP

5 Model quality [i](#)

5.1 Standard geometry [i](#)

Bond lengths and bond angles in the following residue types are not validated in this section: THG, HAR, HEM

The Z score for a bond length (or angle) is the number of standard deviations the observed value is removed from the expected value. A bond length (or angle) with $|Z| > 5$ is considered an outlier worth inspection. RMSZ is the root-mean-square of all Z scores of the bond lengths (or angles).

Mol	Chain	Bond lengths		Bond angles	
		RMSZ	$\# Z > 5$	RMSZ	$\# Z > 5$
1	A	0.65	0/3009	0.70	2/4077 (0.0%)

There are no bond length outliers.

All (2) bond angle outliers are listed below:

Mol	Chain	Res	Type	Atoms	Z	Observed($^{\circ}$)	Ideal($^{\circ}$)
1	A	233	GLY	N-CA-C	-6.20	97.61	113.10
1	A	236	MET	N-CA-C	-5.32	96.64	111.00

There are no chirality outliers.

There are no planarity outliers.

5.2 Too-close contacts [i](#)

In the following table, the Non-H and H(model) columns list the number of non-hydrogen atoms and hydrogen atoms in the chain respectively. The H(added) column lists the number of hydrogen atoms added and optimized by MolProbity. The Clashes column lists the number of clashes within the asymmetric unit, whereas Symm-Clashes lists symmetry-related clashes.

Mol	Chain	Non-H	H(model)	H(added)	Clashes	Symm-Clashes
1	A	2933	0	2823	13	0
2	A	43	0	30	0	0
3	A	13	0	11	1	0
4	A	32	0	19	0	0
5	A	204	0	0	0	0
All	All	3225	0	2883	13	0

The all-atom clashscore is defined as the number of clashes found per 1000 atoms (including hydrogen atoms). The all-atom clashscore for this structure is 2.

All (13) close contacts within the same asymmetric unit are listed below, sorted by their clash magnitude.

Atom-1	Atom-2	Interatomic distance (Å)	Clash overlap (Å)
1:A:123:ASN:HD21	1:A:169:ILE:H	1.16	0.89
1:A:123:ASN:ND2	1:A:169:ILE:H	1.92	0.64
1:A:154:LEU:HD21	1:A:178:PRO:HG2	1.84	0.58
1:A:192:PRO:HD2	1:A:291:GLN:HE22	1.68	0.58
1:A:10:PHE:HE1	1:A:54:MET:HE3	1.71	0.56
1:A:48:LEU:HD12	1:A:108:ILE:HG21	1.89	0.54
1:A:214:ILE:HD11	3:A:909:HAR:HG3	1.94	0.49
1:A:43:HIS:HD2	1:A:226:TYR:OH	1.98	0.47
1:A:123:ASN:HD21	1:A:169:ILE:N	1.98	0.43
1:A:333:ALA:O	1:A:339:HIS:HE1	2.02	0.41
1:A:192:PRO:HD2	1:A:291:GLN:NE2	2.34	0.41
1:A:274:ASP:O	1:A:278:VAL:HG23	2.20	0.41
1:A:10:PHE:CE1	1:A:54:MET:HE3	2.54	0.40

There are no symmetry-related clashes.

5.3 Torsion angles [i](#)

5.3.1 Protein backbone [i](#)

In the following table, the Percentiles column shows the percent Ramachandran outliers of the chain as a percentile score with respect to all X-ray entries followed by that with respect to entries of similar resolution.

The Analysed column shows the number of residues for which the backbone conformation was analysed, and the total number of residues.

Mol	Chain	Analysed	Favoured	Allowed	Outliers	Percentiles	
1	A	357/361 (99%)	349 (98%)	8 (2%)	0	100	100

There are no Ramachandran outliers to report.

5.3.2 Protein sidechains [i](#)

In the following table, the Percentiles column shows the percent sidechain outliers of the chain as a percentile score with respect to all X-ray entries followed by that with respect to entries of similar resolution.

The Analysed column shows the number of residues for which the sidechain conformation was

analysed, and the total number of residues.

Mol	Chain	Analysed	Rotameric	Outliers	Percentiles	
1	A	308/314 (98%)	303 (98%)	5 (2%)	62	65

All (5) residues with a non-rotameric sidechain are listed below:

Mol	Chain	Res	Type
1	A	22	GLU
1	A	114	LYS
1	A	137	GLU
1	A	290	LYS
1	A	318	LYS

Sometimes sidechains can be flipped to improve hydrogen bonding and reduce clashes. All (7) such sidechains are listed below:

Mol	Chain	Res	Type
1	A	43	HIS
1	A	92	HIS
1	A	123	ASN
1	A	291	GLN
1	A	299	HIS
1	A	311	GLN
1	A	339	HIS

5.3.3 RNA [i](#)

There are no RNA molecules in this entry.

5.4 Non-standard residues in protein, DNA, RNA chains [i](#)

There are no non-standard protein/DNA/RNA residues in this entry.

5.5 Carbohydrates [i](#)

There are no monosaccharides in this entry.

5.6 Ligand geometry [i](#)

3 ligands are modelled in this entry.

In the following table, the Counts columns list the number of bonds (or angles) for which Mogul statistics could be retrieved, the number of bonds (or angles) that are observed in the model and the number of bonds (or angles) that are defined in the Chemical Component Dictionary. The Link column lists molecule types, if any, to which the group is linked. The Z score for a bond length (or angle) is the number of standard deviations the observed value is removed from the expected value. A bond length (or angle) with $|Z| > 2$ is considered an outlier worth inspection. RMSZ is the root-mean-square of all Z scores of the bond lengths (or angles).

Mol	Type	Chain	Res	Link	Bond lengths			Bond angles		
					Counts	RMSZ	# $ Z > 2$	Counts	RMSZ	# $ Z > 2$
3	HAR	A	909	-	9,12,12	1.17	1 (11%)	10,14,14	6.04	5 (50%)
2	HEM	A	901	1	42,50,50	1.56	6 (14%)	46,82,82	2.05	10 (21%)
4	THG	A	1999	-	31,34,34	2.87	11 (35%)	39,47,47	1.94	9 (23%)

In the following table, the Chirals column lists the number of chiral outliers, the number of chiral centers analysed, the number of these observed in the model and the number defined in the Chemical Component Dictionary. Similar counts are reported in the Torsion and Rings columns. '-' means no outliers of that kind were identified.

Mol	Type	Chain	Res	Link	Chirals	Torsions	Rings
3	HAR	A	909	-	-	0/11/13/13	-
2	HEM	A	901	1	-	6/12/54/54	-
4	THG	A	1999	-	-	13/22/31/31	0/3/3/3

All (18) bond length outliers are listed below:

Mol	Chain	Res	Type	Atoms	Z	Observed(Å)	Ideal(Å)
4	A	1999	THG	CG-CD	-11.11	1.24	1.50
4	A	1999	THG	C1'-C11	-6.68	1.35	1.50
2	A	901	HEM	C3C-C4C	4.69	1.48	1.41
4	A	1999	THG	C9-N10	4.43	1.53	1.45
2	A	901	HEM	C4D-ND	-3.08	1.34	1.40
2	A	901	HEM	CAB-C3B	-3.03	1.39	1.47
3	A	909	HAR	OH1-NH1	-2.84	1.33	1.40
4	A	1999	THG	C5'-C6'	2.58	1.43	1.38
4	A	1999	THG	C7-N8	-2.57	1.40	1.44
4	A	1999	THG	C6'-C1'	2.38	1.43	1.39
4	A	1999	THG	C2'-C1'	2.36	1.43	1.39
4	A	1999	THG	C4A-C8A	2.31	1.45	1.41
4	A	1999	THG	C3'-C4'	2.26	1.43	1.39
2	A	901	HEM	CMB-C2B	2.25	1.55	1.50
2	A	901	HEM	C3C-CAC	-2.24	1.42	1.47
2	A	901	HEM	C1B-NB	-2.19	1.36	1.40

Continued on next page...

Continued from previous page...

Mol	Chain	Res	Type	Atoms	Z	Observed(Å)	Ideal(Å)
4	A	1999	THG	C5'-C4'	2.14	1.42	1.39
4	A	1999	THG	OX2-C	-2.08	1.24	1.30

All (24) bond angle outliers are listed below:

Mol	Chain	Res	Type	Atoms	Z	Observed(°)	Ideal(°)
3	A	909	HAR	CD-NE-CZ	10.97	143.57	123.46
3	A	909	HAR	NH1-CZ-NH2	10.87	144.97	120.15
3	A	909	HAR	CG-CD-NE	8.00	134.62	112.20
2	A	901	HEM	C4B-CHC-C1C	7.91	132.99	122.56
4	A	1999	THG	C6-C7-N8	6.21	121.89	110.60
3	A	909	HAR	NE-CZ-NH2	-5.35	110.41	120.26
3	A	909	HAR	NE-CZ-NH1	-5.32	104.62	116.80
2	A	901	HEM	C4C-CHD-C1D	5.09	129.27	122.56
4	A	1999	THG	C2-N3-C4	4.13	121.70	115.96
4	A	1999	THG	C8A-C4A-C4	3.89	118.04	114.50
2	A	901	HEM	CHC-C4B-NB	-3.61	120.55	124.44
4	A	1999	THG	N1-C2-N3	-3.58	120.00	125.48
2	A	901	HEM	CBA-CAA-C2A	-3.43	106.77	112.54
2	A	901	HEM	C2C-C3C-C4C	-3.31	104.58	106.90
2	A	901	HEM	CMC-C2C-C3C	3.21	131.09	124.68
4	A	1999	THG	C2-N1-C8A	3.02	121.76	114.59
4	A	1999	THG	CA-N-C11	2.87	128.44	121.56
2	A	901	HEM	CHC-C4B-C3B	2.38	128.22	124.57
4	A	1999	THG	C9-C6-N5	2.38	113.97	108.90
2	A	901	HEM	C3B-C4B-NB	2.33	111.14	109.47
2	A	901	HEM	CHB-C1B-NB	-2.10	121.77	124.37
2	A	901	HEM	C3B-C2B-C1B	-2.09	104.84	106.41
4	A	1999	THG	OX2-C-OX1	-2.08	119.37	124.08
4	A	1999	THG	OE2-CD-CG	2.06	120.50	114.00

There are no chirality outliers.

All (19) torsion outliers are listed below:

Mol	Chain	Res	Type	Atoms
4	A	1999	THG	C7-C6-C9-N10
4	A	1999	THG	N5-C6-C9-N10
4	A	1999	THG	C6-C9-N10-C4'
4	A	1999	THG	CB-CA-N-C11
4	A	1999	THG	C5'-C4'-N10-C9
4	A	1999	THG	C3'-C4'-N10-C9
2	A	901	HEM	C2B-C3B-CAB-CBB

Continued on next page...

Continued from previous page...

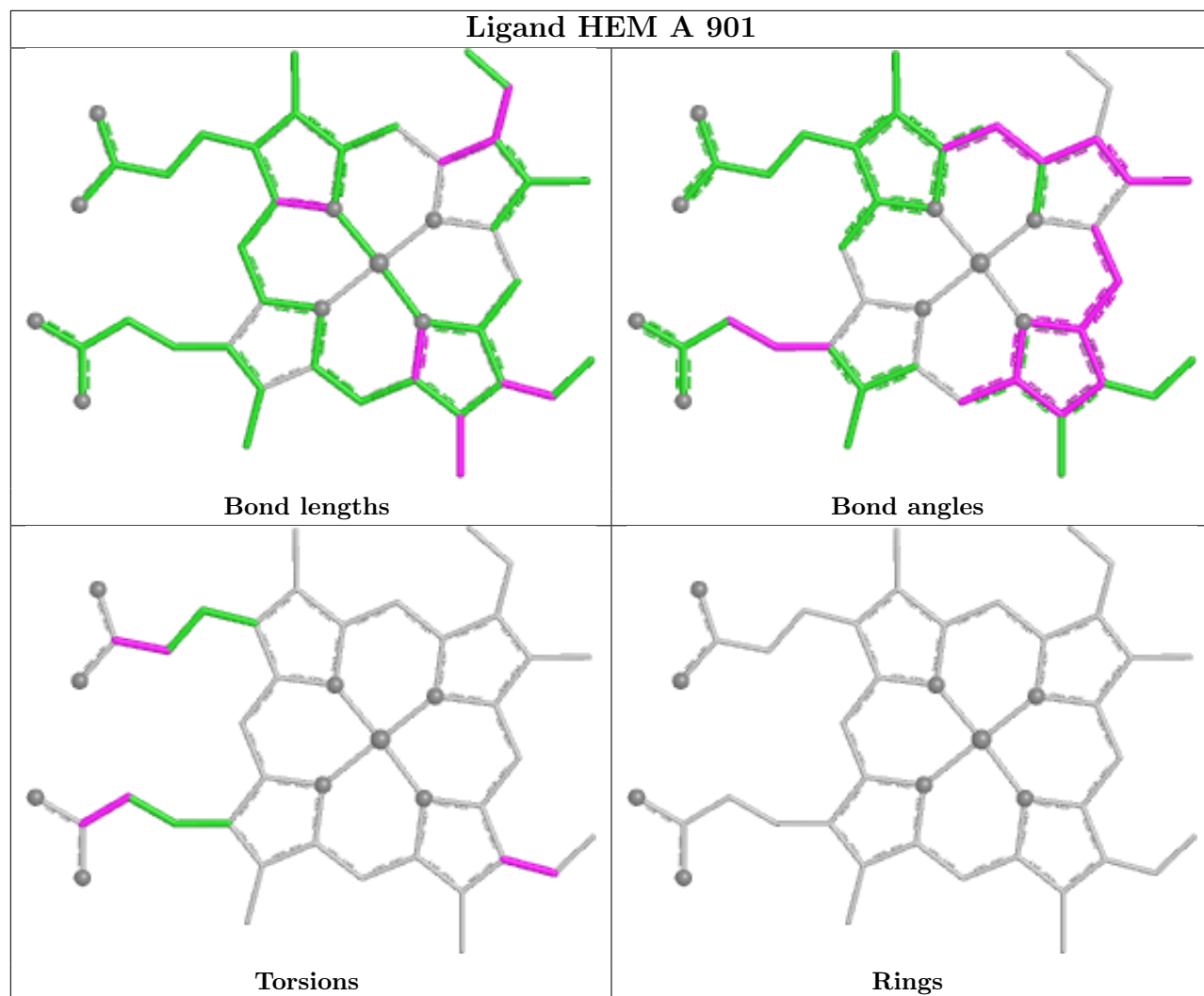
Mol	Chain	Res	Type	Atoms
2	A	901	HEM	C4B-C3B-CAB-CBB
4	A	1999	THG	C-CA-CB-CG
4	A	1999	THG	OX1-C-CA-CB
4	A	1999	THG	N-CA-CB-CG
4	A	1999	THG	OE1-CD-CG-CB
4	A	1999	THG	OE2-CD-CG-CB
4	A	1999	THG	OX2-C-CA-CB
2	A	901	HEM	CAA-CBA-CGA-O1A
2	A	901	HEM	CAD-CBD-CGD-O2D
4	A	1999	THG	OX1-C-CA-N
2	A	901	HEM	CAA-CBA-CGA-O2A
2	A	901	HEM	CAD-CBD-CGD-O1D

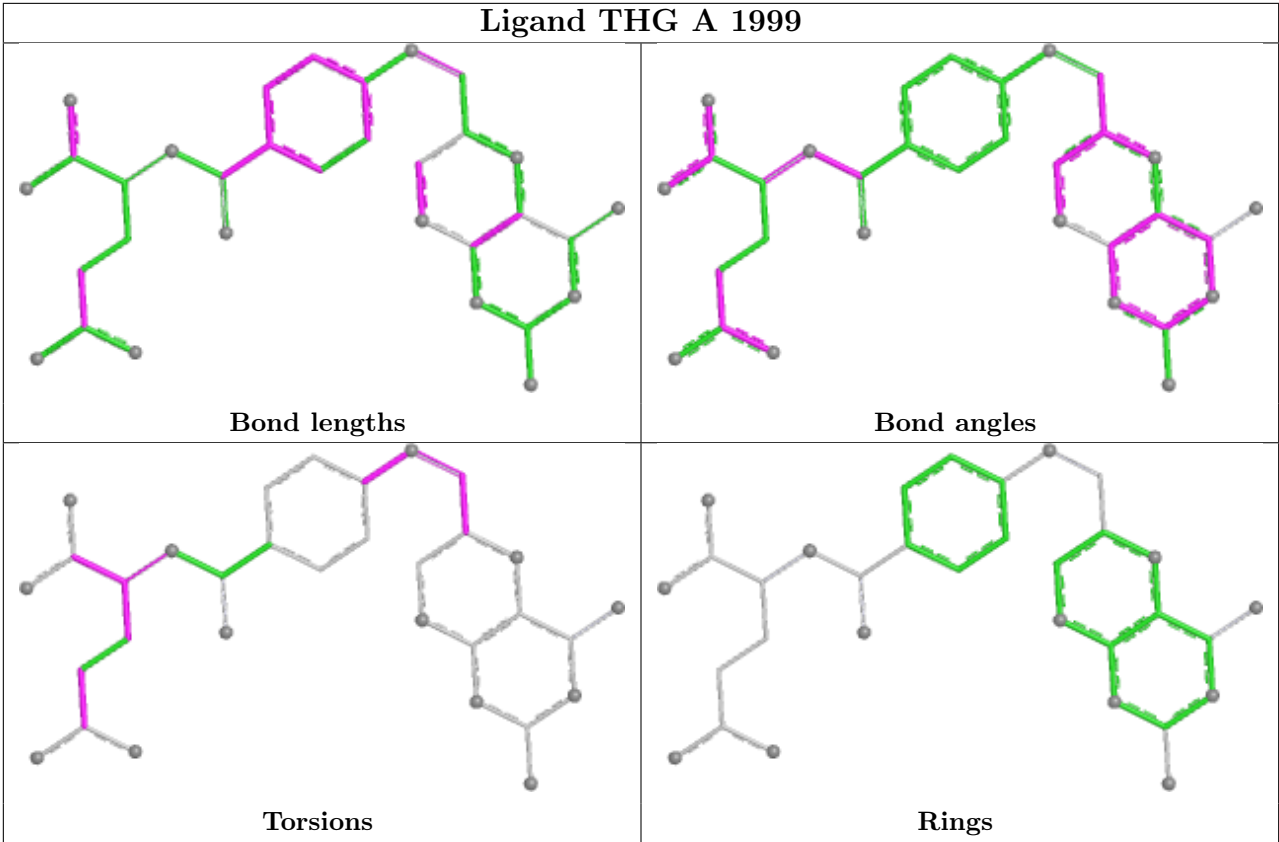
There are no ring outliers.

1 monomer is involved in 1 short contact:

Mol	Chain	Res	Type	Clashes	Symm-Clashes
3	A	909	HAR	1	0

The following is a two-dimensional graphical depiction of Mogul quality analysis of bond lengths, bond angles, torsion angles, and ring geometry for all instances of the Ligand of Interest. In addition, ligands with molecular weight > 250 and outliers as shown on the validation Tables will also be included. For torsion angles, if less than 5% of the Mogul distribution of torsion angles is within 10 degrees of the torsion angle in question, then that torsion angle is considered an outlier. Any bond that is central to one or more torsion angles identified as an outlier by Mogul will be highlighted in the graph. For rings, the root-mean-square deviation (RMSD) between the ring in question and similar rings identified by Mogul is calculated over all ring torsion angles. If the average RMSD is greater than 60 degrees and the minimal RMSD between the ring in question and any Mogul-identified rings is also greater than 60 degrees, then that ring is considered an outlier. The outliers are highlighted in purple. The color gray indicates Mogul did not find sufficient equivalents in the CSD to analyse the geometry.





5.7 Other polymers ⓘ

There are no such residues in this entry.

5.8 Polymer linkage issues ⓘ

The following chains have linkage breaks:

Mol	Chain	Number of breaks
1	A	1

All chain breaks are listed below:

Model	Chain	Residue-1	Atom-1	Residue-2	Atom-2	Distance (Å)
1	A	133:GLU	C	136:GLY	N	4.78

6 Fit of model and data

6.1 Protein, DNA and RNA chains

EDS was not executed - this section is therefore empty.

6.2 Non-standard residues in protein, DNA, RNA chains

EDS was not executed - this section is therefore empty.

6.3 Carbohydrates

EDS was not executed - this section is therefore empty.

6.4 Ligands

EDS was not executed - this section is therefore empty.

6.5 Other polymers

EDS was not executed - this section is therefore empty.