



Full wwPDB X-ray Structure Validation Report ⓘ

Nov 25, 2024 – 03:30 PM EST

PDB ID : 1LK2
Title : 1.35Å crystal structure of H-2Kb complexed with the GNYSFYAL peptide
Authors : Luz, J.G.; Rudolph, M.G.; Wilson, I.A.; Eisen, H.
Deposited on : 2002-04-23
Resolution : 1.35 Å(reported)

This is a Full wwPDB X-ray Structure Validation Report for a publicly released PDB entry.

We welcome your comments at validation@mail.wwpdb.org

A user guide is available at

<https://www.wwpdb.org/validation/2017/XrayValidationReportHelp>

with specific help available everywhere you see the ⓘ symbol.

The types of validation reports are described at

<http://www.wwpdb.org/validation/2017/FAQs#types>.

The following versions of software and data (see [references ⓘ](#)) were used in the production of this report:

MolProbity : 4.02b-467
Mogul : 2022.3.0, CSD as543be (2022)
Xtriage (Phenix) : 1.21
EDS : 3.0
Percentile statistics : 20231227.v01 (using entries in the PDB archive December 27th 2023)
CCP4 : 9.0.004 (Gargrove)
Density-Fitness : 1.0.11
Ideal geometry (proteins) : Engh & Huber (2001)
Ideal geometry (DNA, RNA) : Parkinson et al. (1996)
Validation Pipeline (wwPDB-VP) : 2.40

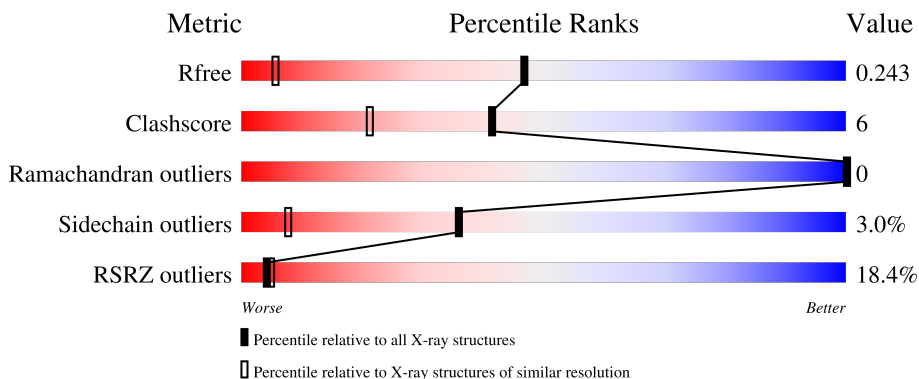
1 Overall quality at a glance

The following experimental techniques were used to determine the structure:

X-RAY DIFFRACTION


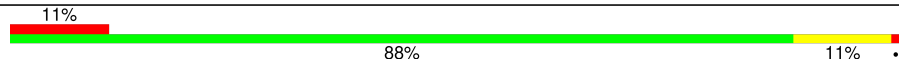

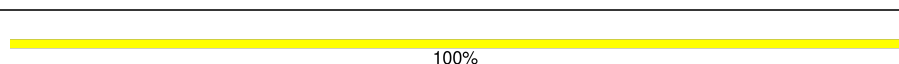
The reported resolution of this entry is 1.35 Å.

Percentile scores (ranging between 0-100) for global validation metrics of the entry are shown in the following graphic. The table shows the number of entries on which the scores are based.



Metric	Whole archive (#Entries)	Similar resolution (#Entries, resolution range(Å))
R_{free}	164625	1089 (1.36-1.36)
Clashscore	180529	1157 (1.36-1.36)
Ramachandran outliers	177936	1146 (1.36-1.36)
Sidechain outliers	177891	1146 (1.36-1.36)
RSRZ outliers	164620	1088 (1.36-1.36)

The table below summarises the geometric issues observed across the polymeric chains and their fit to the electron density. The red, orange, yellow and green segments of the lower bar indicate the fraction of residues that contain outliers for ≥ 3 , 2, 1 and 0 types of geometric quality criteria respectively. A grey segment represents the fraction of residues that are not modelled. The numeric value for each fraction is indicated below the corresponding segment, with a dot representing fractions $\leq 5\%$.

Mol	Chain	Length	Quality of chain
1	A	274	 21% 88% 11%
2	B	99	 11% 88% 11%
3	P	8	 12% 88% 12%
4	C	2	 100%

The following table lists non-polymeric compounds, carbohydrate monomers and non-standard residues in protein, DNA, RNA chains that are outliers for geometric or electron-density-fit crite-

ria:

Mol	Type	Chain	Res	Chirality	Geometry	Clashes	Electron density
8	MRD	B	401	X	-	-	-

2 Entry composition [i](#)

There are 9 unique types of molecules in this entry. The entry contains 3636 atoms, of which 0 are hydrogens and 0 are deuteriums.

In the tables below, the ZeroOcc column contains the number of atoms modelled with zero occupancy, the AltConf column contains the number of residues with at least one atom in alternate conformation and the Trace column contains the number of residues modelled with at most 2 atoms.

- Molecule 1 is a protein called H-2 CLASS I HISTOCOMPATIBILITY ANTIGEN, K-B ALPHA CHAIN.

Mol	Chain	Residues	Atoms					ZeroOcc	AltConf	Trace
			Total	C	N	O	S			
1	A	274	2285	1448	399	428	10	0	14	0

- Molecule 2 is a protein called Beta-2-microglobulin.

Mol	Chain	Residues	Atoms					ZeroOcc	AltConf	Trace
			Total	C	N	O	S			
2	B	99	830	529	138	155	8	0	3	0

- Molecule 3 is a protein called INSULIN RECEPTOR, BETA-SUBUNIT.

Mol	Chain	Residues	Atoms				ZeroOcc	AltConf	Trace
			Total	C	N	O			
3	P	8	67	45	9	13	0	0	0

- Molecule 4 is an oligosaccharide called alpha-L-fucopyranose-(1-6)-2-acetamido-2-deoxy-beta-D-glucopyranose.



Mol	Chain	Residues	Atoms				ZeroOcc	AltConf	Trace
			Total	C	N	O			
4	C	2	24	14	1	9	0	0	0

- Molecule 5 is 2-acetamido-2-deoxy-beta-D-glucopyranose (three-letter code: NAG) (formula: C₈H₁₅NO₆).



Mol	Chain	Residues	Atoms			ZeroOcc	AltConf	
			Total	C	N			O
5	A	1	14	8	1	5	0	0

- Molecule 6 is PHOSPHATE ION (three-letter code: PO4) (formula: O₄P).



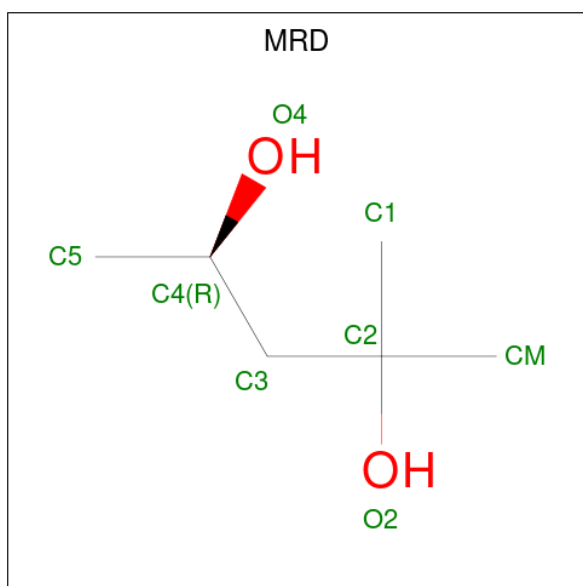
Mol	Chain	Residues	Atoms		ZeroOcc	AltConf	
			Total	O			P
6	A	1	5	4	1	0	0

- Molecule 7 is (4S)-2-METHYL-2,4-PENTANEDIOL (three-letter code: MPD) (formula: C₆H₁₄O₂).



Mol	Chain	Residues	Atoms			ZeroOcc	AltConf
7	A	1	Total	C	O	0	0
			8	6	2		
7	B	1	Total	C	O	0	0
			8	6	2		

- Molecule 8 is (4R)-2-METHYLPENTANE-2,4-DIOL (three-letter code: MRD) (formula: $C_6H_{14}O_2$).



Mol	Chain	Residues	Atoms			ZeroOcc	AltConf
8	B	1	Total	C	O	0	0
			8	6	2		

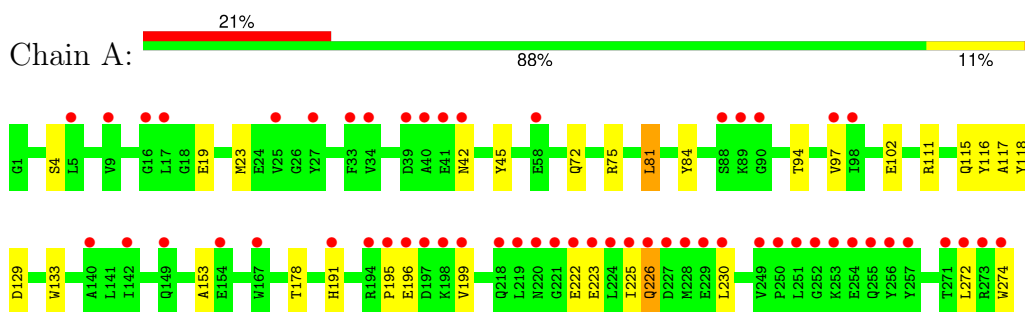
- Molecule 9 is water.

Mol	Chain	Residues	Atoms		ZeroOcc	AltConf
9	A	284	Total 284	O 284	0	0
9	B	96	Total 96	O 96	0	0
9	P	7	Total 7	O 7	0	0

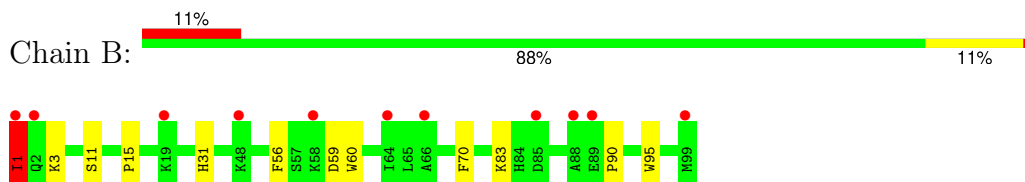
3 Residue-property plots [i](#)

These plots are drawn for all protein, RNA, DNA and oligosaccharide chains in the entry. The first graphic for a chain summarises the proportions of the various outlier classes displayed in the second graphic. The second graphic shows the sequence view annotated by issues in geometry. Residues are color-coded according to the number of geometric quality criteria for which they contain at least one outlier: green = 0, yellow = 1, orange = 2 and red = 3 or more. Stretches of 2 or more consecutive residues without any outlier are shown as a green connector. Residues present in the sample, but not in the model, are shown in grey.

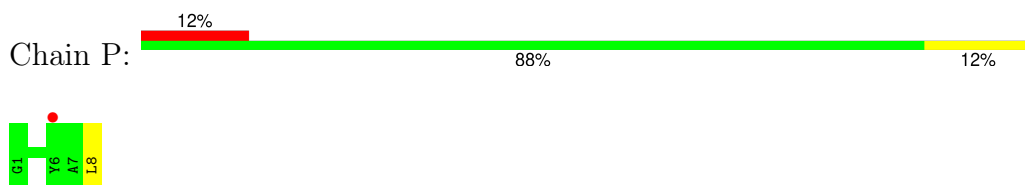
- Molecule 1: H-2 CLASS I HISTOCOMPATIBILITY ANTIGEN, K-B ALPHA CHAIN



- Molecule 2: Beta-2-microglobulin



- Molecule 3: INSULIN RECEPTOR, BETA-SUBUNIT



- Molecule 4: alpha-L-fucopyranose-(1-6)-2-acetamido-2-deoxy-beta-D-glucopyranose



4 Data and refinement statistics

Property	Value	Source
Space group	P 21 21 2	Depositor
Cell constants a, b, c, α , β , γ	135.55Å 87.65Å 45.12Å 90.00° 90.00° 90.00°	Depositor
Resolution (Å)	18.35 – 1.35 18.35 – 1.35	Depositor EDS
% Data completeness (in resolution range)	93.6 (18.35-1.35) 92.6 (18.35-1.35)	Depositor EDS
R_{merge}	(Not available)	Depositor
R_{sym}	0.05	Depositor
$\langle I/\sigma(I) \rangle$ ¹	1.36 (at 1.35Å)	Xtrriage
Refinement program	REFMAC 5.0, CNS	Depositor
R, R_{free}	0.149 , 0.164 0.234 , 0.243	Depositor DCC
R_{free} test set	5933 reflections (5.05%)	wwPDB-VP
Wilson B-factor (Å ²)	15.3	Xtrriage
Anisotropy	0.118	Xtrriage
Bulk solvent k_{sol} (e/Å ³), B_{sol} (Å ²)	0.46 , 53.4	EDS
L-test for twinning ²	$\langle L \rangle = 0.49$, $\langle L^2 \rangle = 0.32$	Xtrriage
Estimated twinning fraction	No twinning to report.	Xtrriage
F_o, F_c correlation	0.94	EDS
Total number of atoms	3636	wwPDB-VP
Average B, all atoms (Å ²)	12.0	wwPDB-VP

Xtrriage's analysis on translational NCS is as follows: *The largest off-origin peak in the Patterson function is 4.30% of the height of the origin peak. No significant pseudotranslation is detected.*

¹Intensities estimated from amplitudes.

²Theoretical values of $\langle |L| \rangle$, $\langle L^2 \rangle$ for acentric reflections are 0.5, 0.333 respectively for untwinned datasets, and 0.375, 0.2 for perfectly twinned datasets.

5 Model quality [i](#)

5.1 Standard geometry [i](#)

Bond lengths and bond angles in the following residue types are not validated in this section: MRD, MPD, PO4, NAG, FUC

The Z score for a bond length (or angle) is the number of standard deviations the observed value is removed from the expected value. A bond length (or angle) with $|Z| > 5$ is considered an outlier worth inspection. RMSZ is the root-mean-square of all Z scores of the bond lengths (or angles).

Mol	Chain	Bond lengths		Bond angles	
		RMSZ	# Z >5	RMSZ	# Z >5
1	A	0.61	0/2407	0.82	1/3267 (0.0%)
2	B	0.58	0/870	0.80	0/1178
3	P	0.88	0/69	0.84	0/91
All	All	0.61	0/3346	0.81	1/4536 (0.0%)

Chiral center outliers are detected by calculating the chiral volume of a chiral center and verifying if the center is modelled as a planar moiety or with the opposite hand. A planarity outlier is detected by checking planarity of atoms in a peptide group, atoms in a mainchain group or atoms of a sidechain that are expected to be planar.

Mol	Chain	#Chirality outliers	#Planarity outliers
2	B	0	1

There are no bond length outliers.

All (1) bond angle outliers are listed below:

Mol	Chain	Res	Type	Atoms	Z	Observed(°)	Ideal(°)
1	A	129	ASP	CB-CG-OD1	7.06	124.65	118.30

There are no chirality outliers.

All (1) planarity outliers are listed below:

Mol	Chain	Res	Type	Group
2	B	1	ILE	Peptide

5.2 Too-close contacts [i](#)

In the following table, the Non-H and H(model) columns list the number of non-hydrogen atoms and hydrogen atoms in the chain respectively. The H(added) column lists the number of hydrogen

atoms added and optimized by MolProbity. The Clashes column lists the number of clashes within the asymmetric unit, whereas Symm-Clashes lists symmetry-related clashes.

Mol	Chain	Non-H	H(model)	H(added)	Clashes	Symm-Clashes
1	A	2285	0	2179	29	0
2	B	830	0	800	12	0
3	P	67	0	59	6	0
4	C	24	0	22	0	0
5	A	14	0	13	0	0
6	A	5	0	0	0	0
7	A	8	0	14	0	0
7	B	8	0	14	4	0
8	B	8	0	14	1	0
9	A	284	0	0	5	0
9	B	96	0	0	2	0
9	P	7	0	0	0	0
All	All	3636	0	3115	40	0

The all-atom clashscore is defined as the number of clashes found per 1000 atoms (including hydrogen atoms). The all-atom clashscore for this structure is 6.

All (40) close contacts within the same asymmetric unit are listed below, sorted by their clash magnitude.

Atom-1	Atom-2	Interatomic distance (Å)	Clash overlap (Å)
2:B:11:SER:OG	7:B:403:MPD:H4	1.77	0.85
1:A:81[A]:LEU:HD11	3:P:8:LEU:CD1	2.26	0.66
2:B:15:PRO:HD3	7:B:403:MPD:H52	1.78	0.65
1:A:81[A]:LEU:CD1	3:P:8:LEU:HD11	2.27	0.65
1:A:94[B]:THR:HG23	9:A:3098:HOH:O	1.95	0.65
1:A:226:GLN:HE21	1:A:226:GLN:HA	1.62	0.65
1:A:4[A]:SER:OG	1:A:102:GLU:HG2	1.98	0.63
1:A:81[A]:LEU:CD1	3:P:8:LEU:CD1	2.80	0.60
1:A:191:HIS:CD2	1:A:199[A]:VAL:HG11	2.38	0.59
2:B:3:LYS:NZ	9:B:459:HOH:O	2.35	0.58
1:A:81[A]:LEU:HD13	3:P:8:LEU:HD11	1.86	0.58
1:A:195:PRO:O	1:A:196:GLU:HB2	2.05	0.57
2:B:15:PRO:CD	7:B:403:MPD:H52	2.35	0.57
1:A:81[A]:LEU:HD11	3:P:8:LEU:HD13	1.86	0.56
1:A:81[B]:LEU:HD23	1:A:118:TYR:CD1	2.40	0.56
1:A:117:ALA:HB2	2:B:60:TRP:CE2	2.42	0.55
1:A:191:HIS:NE2	1:A:199[A]:VAL:HG11	2.23	0.54
9:A:3183:HOH:O	2:B:1:ILE:HG21	2.08	0.54
2:B:95:TRP:CZ2	7:B:403:MPD:H51	2.43	0.53

Continued on next page...

Continued from previous page...

Atom-1	Atom-2	Interatomic distance (Å)	Clash overlap (Å)
2:B:1:ILE:HG23	2:B:1:ILE:O	2.09	0.53
1:A:72:GLN:HE22	1:A:75:ARG:CZ	2.22	0.53
1:A:178:THR:HG22	9:A:3199:HOH:O	2.10	0.52
1:A:111:ARG:NH1	9:A:3249:HOH:O	2.41	0.51
2:B:1:ILE:O	2:B:1:ILE:CG2	2.58	0.51
1:A:23[A]:MET:SD	8:B:401:MRD:H5C3	2.51	0.50
2:B:3:LYS:NZ	2:B:59:ASP:OD2	2.44	0.50
1:A:81[A]:LEU:HD11	3:P:8:LEU:HD11	1.91	0.49
1:A:223:GLU:HB3	1:A:225:ILE:CD1	2.44	0.48
1:A:226:GLN:HE21	1:A:226:GLN:CA	2.20	0.47
1:A:133:TRP:CZ3	1:A:153:ALA:HB2	2.49	0.47
1:A:81[B]:LEU:HD12	1:A:84:TYR:CD2	2.48	0.47
2:B:83:LYS:HG2	2:B:90:PRO:HG3	1.96	0.47
1:A:19:GLU:OE1	1:A:75:ARG:CZ	2.64	0.46
1:A:115[B]:GLN:HG3	1:A:125:ALA:HB2	1.99	0.45
1:A:116[B]:TYR:HE1	9:A:3245:HOH:O	2.01	0.43
1:A:97:VAL:HG22	1:A:116[B]:TYR:CD2	2.54	0.42
2:B:31:HIS:ND1	9:B:452:HOH:O	2.37	0.42
1:A:195:PRO:O	1:A:196:GLU:CB	2.67	0.41
1:A:133:TRP:HH2	1:A:153:ALA:N	2.19	0.41
1:A:191:HIS:HB2	1:A:274:TRP:CE3	2.57	0.40

There are no symmetry-related clashes.

5.3 Torsion angles [i](#)

5.3.1 Protein backbone [i](#)

In the following table, the Percentiles column shows the percent Ramachandran outliers of the chain as a percentile score with respect to all X-ray entries followed by that with respect to entries of similar resolution.

The Analysed column shows the number of residues for which the backbone conformation was analysed, and the total number of residues.

Mol	Chain	Analysed	Favoured	Allowed	Outliers	Percentiles	
1	A	286/274 (104%)	282 (99%)	4 (1%)	0	100	100
2	B	100/99 (101%)	100 (100%)	0	0	100	100
3	P	6/8 (75%)	6 (100%)	0	0	100	100
All	All	392/381 (103%)	388 (99%)	4 (1%)	0	100	100

There are no Ramachandran outliers to report.

5.3.2 Protein sidechains [i](#)

In the following table, the Percentiles column shows the percent sidechain outliers of the chain as a percentile score with respect to all X-ray entries followed by that with respect to entries of similar resolution.

The Analysed column shows the number of residues for which the sidechain conformation was analysed, and the total number of residues.

Mol	Chain	Analysed	Rotameric	Outliers	Percentiles	
1	A	246/232 (106%)	238 (97%)	8 (3%)	33	6
2	B	97/94 (103%)	94 (97%)	3 (3%)	35	7
3	P	6/6 (100%)	6 (100%)	0	100	100
All	All	349/332 (105%)	338 (97%)	11 (3%)	36	7

All (11) residues with a non-rotameric sidechain are listed below:

Mol	Chain	Res	Type
1	A	42	ASN
1	A	45	TYR
1	A	81[A]	LEU
1	A	81[B]	LEU
1	A	222	GLU
1	A	226	GLN
1	A	230	LEU
1	A	272	LEU
2	B	1	ILE
2	B	56	PHE
2	B	70	PHE

Sometimes sidechains can be flipped to improve hydrogen bonding and reduce clashes. All (6) such sidechains are listed below:

Mol	Chain	Res	Type
1	A	42	ASN
1	A	72	GLN
1	A	87	GLN
1	A	174	ASN
1	A	218	GLN
1	A	226	GLN

5.3.3 RNA [i](#)

There are no RNA molecules in this entry.

5.4 Non-standard residues in protein, DNA, RNA chains [i](#)

There are no non-standard protein/DNA/RNA residues in this entry.

5.5 Carbohydrates [i](#)

2 monosaccharides are modelled in this entry.

In the following table, the Counts columns list the number of bonds (or angles) for which Mogul statistics could be retrieved, the number of bonds (or angles) that are observed in the model and the number of bonds (or angles) that are defined in the Chemical Component Dictionary. The Link column lists molecule types, if any, to which the group is linked. The Z score for a bond length (or angle) is the number of standard deviations the observed value is removed from the expected value. A bond length (or angle) with $|Z| > 2$ is considered an outlier worth inspection. RMSZ is the root-mean-square of all Z scores of the bond lengths (or angles).

Mol	Type	Chain	Res	Link	Bond lengths			Bond angles		
					Counts	RMSZ	# Z > 2	Counts	RMSZ	# Z > 2
4	NAG	C	1	4,1	14,14,15	0.47	0	17,19,21	1.01	1 (5%)
4	FUC	C	2	4	10,10,11	0.94	0	14,14,16	1.95	3 (21%)

In the following table, the Chirals column lists the number of chiral outliers, the number of chiral centers analysed, the number of these observed in the model and the number defined in the Chemical Component Dictionary. Similar counts are reported in the Torsion and Rings columns. '-' means no outliers of that kind were identified.

Mol	Type	Chain	Res	Link	Chirals	Torsions	Rings
4	NAG	C	1	4,1	-	0/6/23/26	0/1/1/1
4	FUC	C	2	4	-	-	0/1/1/1

There are no bond length outliers.

All (4) bond angle outliers are listed below:

Mol	Chain	Res	Type	Atoms	Z	Observed(°)	Ideal(°)
4	C	2	FUC	C1-C2-C3	-5.06	102.28	109.64
4	C	2	FUC	C1-O5-C5	-4.09	103.31	112.97
4	C	1	NAG	O5-C5-C6	2.67	112.86	107.66
4	C	2	FUC	O5-C1-C2	2.49	116.73	110.79

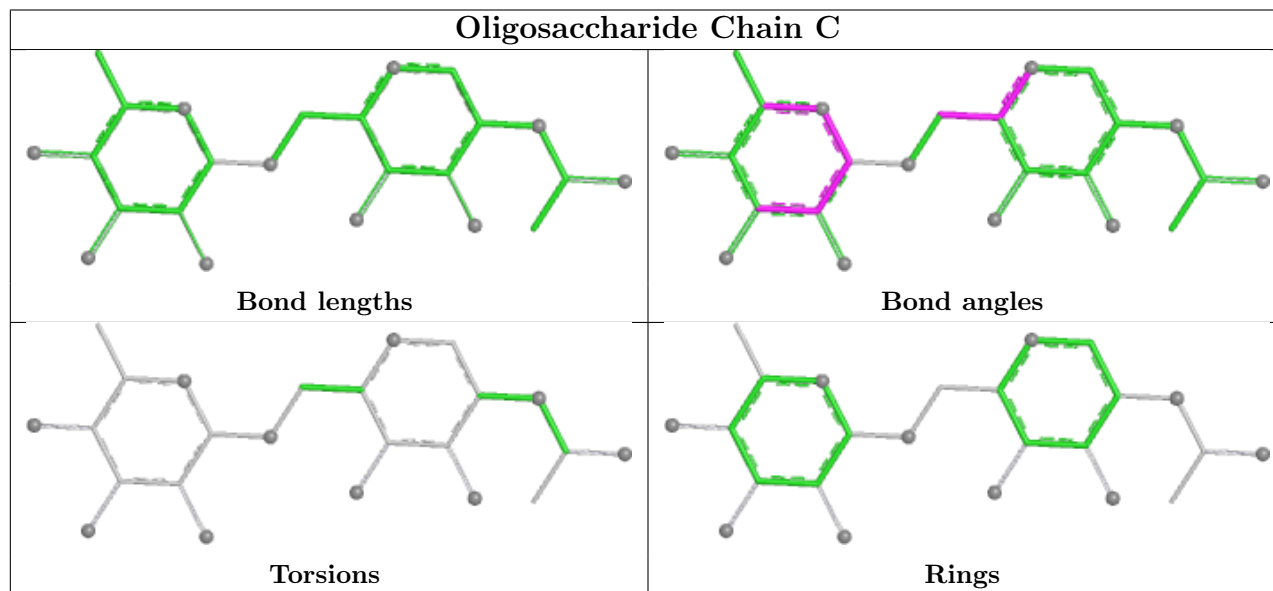
There are no chirality outliers.

There are no torsion outliers.

There are no ring outliers.

No monomer is involved in short contacts.

The following is a two-dimensional graphical depiction of Mogul quality analysis of bond lengths, bond angles, torsion angles, and ring geometry for oligosaccharide.



5.6 Ligand geometry [i](#)

5 ligands are modelled in this entry.

In the following table, the Counts columns list the number of bonds (or angles) for which Mogul statistics could be retrieved, the number of bonds (or angles) that are observed in the model and the number of bonds (or angles) that are defined in the Chemical Component Dictionary. The Link column lists molecule types, if any, to which the group is linked. The Z score for a bond length (or angle) is the number of standard deviations the observed value is removed from the expected value. A bond length (or angle) with $|Z| > 2$ is considered an outlier worth inspection. RMSZ is the root-mean-square of all Z scores of the bond lengths (or angles).

Mol	Type	Chain	Res	Link	Bond lengths			Bond angles		
					Counts	RMSZ	# $ Z > 2$	Counts	RMSZ	# $ Z > 2$
7	MPD	B	403	-	7,7,7	0.31	0	9,10,10	1.28	1 (11%)
5	NAG	A	3001	1	14,14,15	0.44	0	17,19,21	1.46	3 (17%)
7	MPD	A	402	-	7,7,7	0.49	0	9,10,10	0.80	0
8	MRD	B	401	-	7,7,7	0.47	0	9,10,10	1.31	2 (22%)
6	PO4	A	501	-	4,4,4	0.68	0	6,6,6	0.60	0

In the following table, the Chirals column lists the number of chiral outliers, the number of chiral centers analysed, the number of these observed in the model and the number defined in the Chemical Component Dictionary. Similar counts are reported in the Torsion and Rings columns. '-' means no outliers of that kind were identified.

Mol	Type	Chain	Res	Link	Chirals	Torsions	Rings
7	MPD	B	403	-	-	0/5/5/5	-
5	NAG	A	3001	1	-	0/6/23/26	0/1/1/1
8	MRD	B	401	-	1/1/2/2	2/5/5/5	-
7	MPD	A	402	-	-	4/5/5/5	-

There are no bond length outliers.

All (6) bond angle outliers are listed below:

Mol	Chain	Res	Type	Atoms	Z	Observed(°)	Ideal(°)
5	A	3001	NAG	C1-O5-C5	3.28	116.58	112.19
5	A	3001	NAG	C4-C3-C2	-2.82	106.88	111.02
5	A	3001	NAG	O5-C1-C2	-2.74	107.05	111.29
8	B	401	MRD	O4-C4-C5	2.53	120.35	109.45
8	B	401	MRD	O4-C4-C3	2.31	120.56	111.35
7	B	403	MPD	O2-C2-CM	2.29	115.13	107.99

All (1) chirality outliers are listed below:

Mol	Chain	Res	Type	Atom
8	B	401	MRD	C4

All (6) torsion outliers are listed below:

Mol	Chain	Res	Type	Atoms
7	A	402	MPD	CM-C2-C3-C4
7	A	402	MPD	O2-C2-C3-C4
7	A	402	MPD	C2-C3-C4-O4
8	B	401	MRD	C2-C3-C4-O4
7	A	402	MPD	C1-C2-C3-C4
8	B	401	MRD	CM-C2-C3-C4

There are no ring outliers.

2 monomers are involved in 5 short contacts:

Mol	Chain	Res	Type	Clashes	Symm-Clashes
7	B	403	MPD	4	0
8	B	401	MRD	1	0

5.7 Other polymers [i](#)

There are no such residues in this entry.

5.8 Polymer linkage issues [i](#)

There are no chain breaks in this entry.

6 Fit of model and data

6.1 Protein, DNA and RNA chains

Warning: The R factor obtained from EDS is 0.2406, which does not match the depositor's R factor of 0.14949. Please interpret the results in this section carefully.

In the following table, the column labelled '#RSRZ > 2' contains the number (and percentage) of RSRZ outliers, followed by percent RSRZ outliers for the chain as percentile scores relative to all X-ray entries and entries of similar resolution. The OWAB column contains the minimum, median, 95th percentile and maximum values of the occupancy-weighted average B-factor per residue. The column labelled 'Q < 0.9' lists the number of (and percentage) of residues with an average occupancy less than 0.9.

Mol	Chain	Analysed	<RSRZ>	#RSRZ>2	OWAB(Å ²)	Q<0.9
1	A	274/274 (100%)	1.10	58 (21%) 3 4	5, 9, 13, 20	15 (5%)
2	B	99/99 (100%)	0.90	11 (11%) 12 15	5, 9, 13, 16	3 (3%)
3	P	8/8 (100%)	0.55	1 (12%) 9 12	8, 9, 10, 10	0
All	All	381/381 (100%)	1.03	70 (18%) 4 5	5, 9, 13, 20	18 (4%)

All (70) RSRZ outliers are listed below:

Mol	Chain	Res	Type	RSRZ
1	A	225	ILE	9.5
1	A	256	TYR	9.3
1	A	220	ASN	6.9
1	A	274	TRP	6.6
1	A	226	GLN	6.3
1	A	196	GLU	6.3
2	B	1	ILE	6.0
1	A	41	GLU	6.0
1	A	221	GLY	5.7
1	A	228	MET	5.5
1	A	197	ASP	5.2
1	A	227	ASP	4.9
1	A	273	ARG	4.7
1	A	253	LYS	4.7
1	A	42	ASN	4.6
1	A	222	GLU	4.5
1	A	252	GLY	4.5
1	A	255	GLN	4.4
1	A	195	PRO	4.4
1	A	219	LEU	3.9

Continued on next page...

Continued from previous page...

Mol	Chain	Res	Type	RSRZ
2	B	48	LYS	3.7
1	A	250	PRO	3.6
1	A	251	LEU	3.5
1	A	198	LYS	3.5
2	B	88	ALA	3.3
1	A	224	LEU	2.9
1	A	88	SER	2.9
1	A	33	PHE	2.9
1	A	230	LEU	2.8
1	A	149	GLN	2.8
2	B	58	LYS	2.7
1	A	58	GLU	2.7
2	B	89	GLU	2.6
1	A	254	GLU	2.6
1	A	89	LYS	2.5
1	A	25	VAL	2.5
2	B	2	GLN	2.5
1	A	218	GLN	2.4
2	B	19	LYS	2.4
1	A	98[A]	ILE	2.4
1	A	128	GLU	2.4
2	B	85	ASP	2.4
1	A	5	LEU	2.4
1	A	271	THR	2.4
1	A	229	GLU	2.4
2	B	64	ILE	2.4
3	P	6	TYR	2.4
1	A	223	GLU	2.4
1	A	34	VAL	2.4
1	A	40	ALA	2.3
2	B	99	MET	2.3
1	A	39	ASP	2.3
1	A	191	HIS	2.3
2	B	66	ALA	2.3
1	A	17	LEU	2.2
1	A	272	LEU	2.2
1	A	249	VAL	2.2
1	A	199[A]	VAL	2.2
1	A	194	ARG	2.2
1	A	140	ALA	2.2
1	A	124	ILE	2.2
1	A	9	VAL	2.1

Continued on next page...

Continued from previous page...

Mol	Chain	Res	Type	RSRZ
1	A	167	TRP	2.1
1	A	90	GLY	2.1
1	A	27	TYR	2.1
1	A	257	TYR	2.1
1	A	97	VAL	2.1
1	A	16	GLY	2.1
1	A	154	GLU	2.0
1	A	142	ILE	2.0

6.2 Non-standard residues in protein, DNA, RNA chains [i](#)

There are no non-standard protein/DNA/RNA residues in this entry.

6.3 Carbohydrates [i](#)

SUGAR-RSR INFOmissingINFO

6.4 Ligands [i](#)

In the following table, the Atoms column lists the number of modelled atoms in the group and the number defined in the chemical component dictionary. The B-factors column lists the minimum, median, 95th percentile and maximum values of B factors of atoms in the group. The column labelled 'Q< 0.9' lists the number of atoms with occupancy less than 0.9.

Mol	Type	Chain	Res	Atoms	RSCC	RSR	B-factors(Å ²)	Q<0.9
5	NAG	A	3001	14/15	0.64	0.17	33,41,45,46	0
6	PO4	A	501	5/5	0.67	0.19	44,46,48,48	0
7	MPD	B	403	8/8	0.73	0.23	20,33,36,37	0
8	MRD	B	401	8/8	0.90	0.12	23,24,26,26	0
7	MPD	A	402	8/8	0.92	0.15	21,25,27,27	0

6.5 Other polymers [i](#)

There are no such residues in this entry.