



Full wwPDB X-ray Structure Validation Report ⓘ

Aug 6, 2023 – 06:29 PM EDT

PDB ID : 1KO0
Title : Crystal Structure of a D,L-lysine complex of diaminopimelate decarboxylase
Authors : Levdikov, V.; Blagova, L.; Bose, N.; Momany, C.
Deposited on : 2001-12-19
Resolution : 2.20 Å(reported)

This is a Full wwPDB X-ray Structure Validation Report for a publicly released PDB entry.

We welcome your comments at validation@mail.wwpdb.org

A user guide is available at

<https://www.wwpdb.org/validation/2017/XrayValidationReportHelp>

with specific help available everywhere you see the ⓘ symbol.

The types of validation reports are described at

<http://www.wwpdb.org/validation/2017/FAQs#types>.

The following versions of software and data (see [references ⓘ](#)) were used in the production of this report:

MolProbity : 4.02b-467
Mogul : 1.8.5 (274361), CSD as541be (2020)
Xtrriage (Phenix) : **NOT EXECUTED**
EDS : **NOT EXECUTED**
Percentile statistics : 20191225.v01 (using entries in the PDB archive December 25th 2019)
Ideal geometry (proteins) : Engh & Huber (2001)
Ideal geometry (DNA, RNA) : Parkinson et al. (1996)
Validation Pipeline (wwPDB-VP) : 2.35

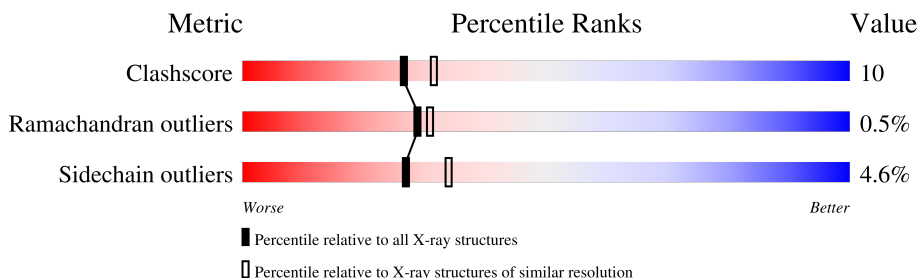
1 Overall quality at a glance

The following experimental techniques were used to determine the structure:

X-RAY DIFFRACTION

The reported resolution of this entry is 2.20 Å.

Percentile scores (ranging between 0-100) for global validation metrics of the entry are shown in the following graphic. The table shows the number of entries on which the scores are based.



Metric	Whole archive (#Entries)	Similar resolution (#Entries, resolution range(Å))
Clashscore	141614	5594 (2.20-2.20)
Ramachandran outliers	138981	5503 (2.20-2.20)
Sidechain outliers	138945	5504 (2.20-2.20)

The table below summarises the geometric issues observed across the polymeric chains and their fit to the electron density. The red, orange, yellow and green segments of the lower bar indicate the fraction of residues that contain outliers for ≥ 3 , 2, 1 and 0 types of geometric quality criteria respectively. A grey segment represents the fraction of residues that are not modelled. The numeric value for each fraction is indicated below the corresponding segment, with a dot representing fractions $\leq 5\%$.

Note EDS was not executed.

Mol	Chain	Length	Quality of chain
1	A	425	81% 16% ..

The following table lists non-polymeric compounds, carbohydrate monomers and non-standard residues in protein, DNA, RNA chains that are outliers for geometric or electron-density-fit criteria:

Mol	Type	Chain	Res	Chirality	Geometry	Clashes	Electron density
4	DLY	A	542[B]	X	-	-	-

2 Entry composition i

There are 5 unique types of molecules in this entry. The entry contains 3693 atoms, of which 0 are hydrogens and 0 are deuteriums.

In the tables below, the ZeroOcc column contains the number of atoms modelled with zero occupancy, the AltConf column contains the number of residues with at least one atom in alternate conformation and the Trace column contains the number of residues modelled with at most 2 atoms.

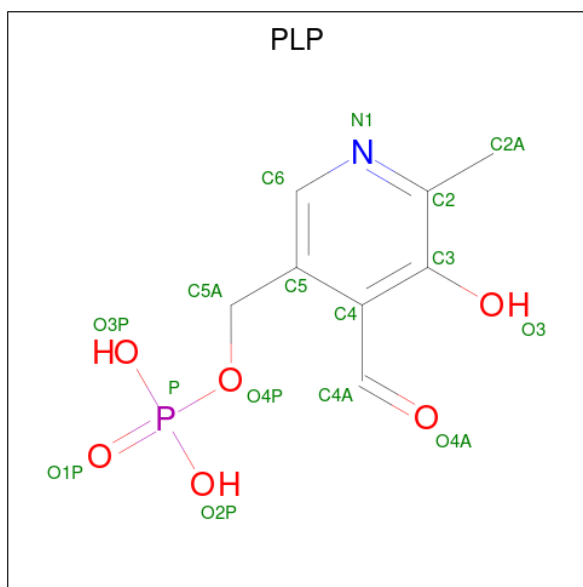
- Molecule 1 is a protein called Diaminopimelate decarboxylase.

Mol	Chain	Residues	Atoms					ZeroOcc	AltConf	Trace
			Total	C	N	O	S			
1	A	419	3244	2036	586	610	12	0	0	0

There are 5 discrepancies between the modelled and reference sequences:

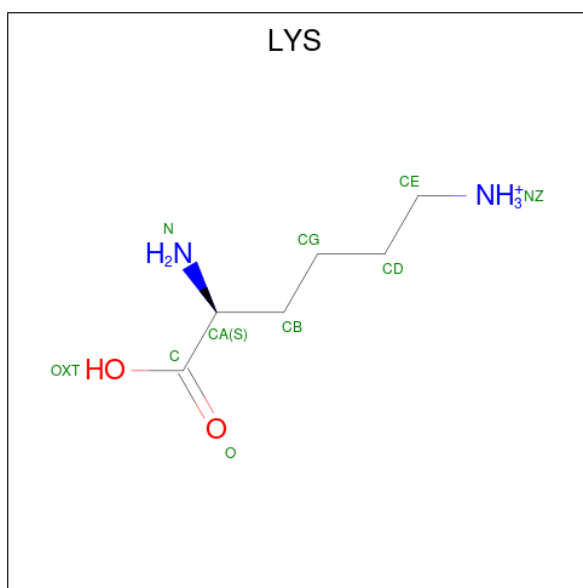
Chain	Residue	Modelled	Actual	Comment	Reference
A	421	HIS	-	expression tag	UNP P00861
A	422	HIS	-	expression tag	UNP P00861
A	423	HIS	-	expression tag	UNP P00861
A	424	HIS	-	expression tag	UNP P00861
A	425	HIS	-	expression tag	UNP P00861

- Molecule 2 is PYRIDOXAL-5'-PHOSPHATE (three-letter code: PLP) (formula: C₈H₁₀NO₆P).



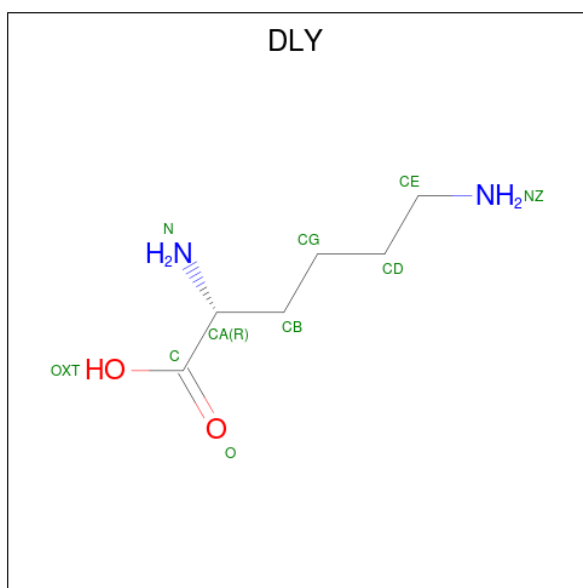
Mol	Chain	Residues	Atoms					ZeroOcc	AltConf
			Total	C	N	O	P		
2	A	1	45	24	3	15	3	0	1

- Molecule 3 is LYSINE (three-letter code: LYS) (formula: $C_6H_{15}N_2O_2$).



Mol	Chain	Residues	Atoms				ZeroOcc	AltConf
			Total	C	N	O		
3	A	1	10	6	2	2	0	1

- Molecule 4 is D-LYSINE (three-letter code: DLY) (formula: $C_6H_{14}N_2O_2$).



Mol	Chain	Residues	Atoms				ZeroOcc	AltConf
			Total	C	N	O		
4	A	1	10	6	2	2	0	1

- Molecule 5 is water.


Mol	Chain	Residues	Atoms		ZeroOcc	AltConf
5	A	384	Total 384	O 384	0	0

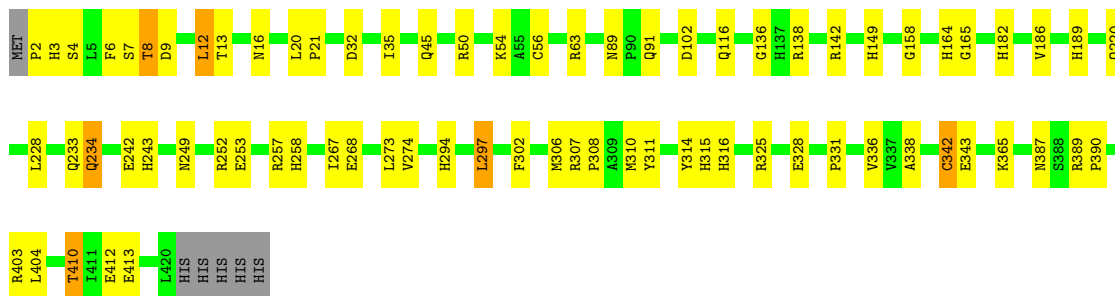
3 Residue-property plots [i](#)

These plots are drawn for all protein, RNA, DNA and oligosaccharide chains in the entry. The first graphic for a chain summarises the proportions of the various outlier classes displayed in the second graphic. The second graphic shows the sequence view annotated by issues in geometry. Residues are color-coded according to the number of geometric quality criteria for which they contain at least one outlier: green = 0, yellow = 1, orange = 2 and red = 3 or more. Stretches of 2 or more consecutive residues without any outlier are shown as a green connector. Residues present in the sample, but not in the model, are shown in grey.

Note EDS was not executed.

- Molecule 1: Diaminopimelate decarboxylase

Chain A:  81% 16% ..



4 Data and refinement statistics

Xtrriage (Phenix) and EDS were not executed - this section is therefore incomplete.

Property	Value	Source
Space group	P 61 2 2	Depositor
Cell constants a, b, c, α , β , γ	99.00Å 99.00Å 176.97Å 90.00° 90.00° 120.00°	Depositor
Resolution (Å)	10.00 – 2.20	Depositor
% Data completeness (in resolution range)	97.8 (10.00-2.20)	Depositor
R_{merge}	0.07	Depositor
R_{sym}	0.07	Depositor
Refinement program	REFMAC	Depositor
R, R_{free}	0.181 , 0.246	Depositor
Estimated twinning fraction	No twinning to report.	Xtrriage
Total number of atoms	3693	wwPDB-VP
Average B, all atoms (Å ²)	31.0	wwPDB-VP

5 Model quality [i](#)

5.1 Standard geometry [i](#)

Bond lengths and bond angles in the following residue types are not validated in this section: PLP, DLY

The Z score for a bond length (or angle) is the number of standard deviations the observed value is removed from the expected value. A bond length (or angle) with $|Z| > 5$ is considered an outlier worth inspection. RMSZ is the root-mean-square of all Z scores of the bond lengths (or angles).

Mol	Chain	Bond lengths		Bond angles	
		RMSZ	# $ Z > 5$	RMSZ	# $ Z > 5$
1	A	0.57	0/3313	0.77	1/4500 (0.0%)

Chiral center outliers are detected by calculating the chiral volume of a chiral center and verifying if the center is modelled as a planar moiety or with the opposite hand. A planarity outlier is detected by checking planarity of atoms in a peptide group, atoms in a mainchain group or atoms of a sidechain that are expected to be planar.

Mol	Chain	#Chirality outliers	#Planarity outliers
1	A	0	2

There are no bond length outliers.

All (1) bond angle outliers are listed below:

Mol	Chain	Res	Type	Atoms	Z	Observed($^{\circ}$)	Ideal($^{\circ}$)
1	A	138	ARG	NE-CZ-NH1	5.21	122.90	120.30

There are no chirality outliers.

All (2) planarity outliers are listed below:

Mol	Chain	Res	Type	Group
1	A	158	GLY	Mainchain
1	A	165	GLY	Mainchain

5.2 Too-close contacts [i](#)

In the following table, the Non-H and H(model) columns list the number of non-hydrogen atoms and hydrogen atoms in the chain respectively. The H(added) column lists the number of hydrogen atoms added and optimized by MolProbity. The Clashes column lists the number of clashes within the asymmetric unit, whereas Symm-Clashes lists symmetry-related clashes.

Mol	Chain	Non-H	H(model)	H(added)	Clashes	Symm-Clashes
1	A	3244	0	3179	67	0
2	A	45	0	18	9	0
3	A	10	0	10	2	0
4	A	10	0	10	3	0
5	A	384	0	0	9	1
All	All	3693	0	3217	67	1

The all-atom clashscore is defined as the number of clashes found per 1000 atoms (including hydrogen atoms). The all-atom clashscore for this structure is 10.

All (67) close contacts within the same asymmetric unit are listed below, sorted by their clash magnitude.

Atom-1	Atom-2	Interatomic distance (Å)	Clash overlap (Å)
1:A:54:LYS:NZ	2:A:540[B]:PLP:C4A	2.23	1.00
1:A:54:LYS:NZ	2:A:540[C]:PLP:C4A	2.24	0.99
1:A:54:LYS:HZ2	2:A:540[C]:PLP:C4A	1.67	0.97
1:A:54:LYS:HZ2	2:A:540[B]:PLP:C4A	1.64	0.97
1:A:410:THR:HG22	1:A:413:GLU:H	1.45	0.81
1:A:186:VAL:HA	1:A:220:GLN:NE2	2.08	0.69
1:A:410:THR:HG21	5:A:770:HOH:O	1.94	0.67
1:A:249:ASN:HD22	1:A:252:ARG:HH11	1.42	0.65
1:A:54:LYS:CE	4:A:542[B]:DLY:HB3	2.29	0.63
1:A:54:LYS:HZ3	2:A:540[C]:PLP:C4A	2.13	0.61
1:A:234:GLN:CD	1:A:234:GLN:H	2.04	0.61
1:A:6:PHE:CE1	1:A:328:GLU:HG3	2.37	0.60
1:A:54:LYS:HZ3	2:A:540[B]:PLP:C4A	2.15	0.59
1:A:253:GLU:HB3	1:A:257:ARG:HH12	1.67	0.59
1:A:136:GLY:HA2	1:A:182:HIS:O	2.04	0.58
1:A:342:CYS:H	1:A:387:ASN:HD21	1.52	0.58
1:A:410:THR:HG23	1:A:412:GLU:H	1.67	0.58
1:A:403:ARG:HG2	5:A:789:HOH:O	2.03	0.58
1:A:4:SER:O	1:A:8:THR:HG23	2.05	0.57
1:A:307:ARG:HH11	1:A:315:HIS:CE1	2.23	0.57
1:A:249:ASN:ND2	1:A:252:ARG:HH11	2.04	0.56
1:A:2:PRO:HG3	1:A:316:HIS:CB	2.37	0.55
1:A:8:THR:HB	1:A:13:THR:HG22	1.88	0.55
1:A:253:GLU:HB3	1:A:257:ARG:NH1	2.23	0.54
1:A:294:HIS:HE1	5:A:640:HOH:O	1.90	0.54
1:A:20:LEU:N	1:A:21:PRO:HD2	2.22	0.54
1:A:249:ASN:ND2	1:A:252:ARG:HE	2.06	0.54
1:A:89:ASN:OD1	1:A:91:GLN:HG2	2.09	0.53
1:A:45:GLN:HE22	1:A:242:GLU:HA	1.74	0.52

Continued on next page...

Continued from previous page...

Atom-1	Atom-2	Interatomic distance (Å)	Clash overlap (Å)
1:A:54:LYS:HE3	4:A:542[B]:DLY:HB3	1.90	0.52
1:A:8:THR:CB	1:A:13:THR:HG22	2.40	0.52
1:A:54:LYS:HE2	4:A:542[B]:DLY:HB3	1.92	0.52
1:A:189:HIS:HE1	1:A:268:GLU:OE2	1.93	0.51
1:A:54:LYS:HE2	3:A:541[A]:LYS:HD2	1.93	0.51
1:A:228:LEU:HD11	1:A:267:ILE:HD11	1.93	0.51
1:A:2:PRO:HG3	1:A:316:HIS:HB2	1.93	0.51
1:A:233:GLN:HG2	1:A:314:TYR:CD2	2.46	0.50
1:A:311:TYR:HH	3:A:541[A]:LYS:N	2.09	0.50
1:A:8:THR:HG21	1:A:13:THR:HA	1.94	0.50
1:A:365:LYS:HD2	5:A:909:HOH:O	2.12	0.49
1:A:186:VAL:HA	1:A:220:GLN:HE22	1.77	0.49
1:A:102:ASP:OD2	1:A:164:HIS:HD2	1.94	0.49
1:A:389:ARG:HA	1:A:390:PRO:HD3	1.66	0.48
1:A:4:SER:HB3	1:A:7:SER:HB3	1.96	0.48
1:A:410:THR:HG23	1:A:412:GLU:N	2.29	0.47
1:A:6:PHE:CD1	1:A:328:GLU:HG3	2.50	0.47
1:A:32:ASP:HB3	1:A:35:ILE:HD12	1.98	0.46
1:A:243:HIS:HD2	5:A:768:HOH:O	1.99	0.46
1:A:268:GLU:O	2:A:540[B]:PLP:H6	2.17	0.45
1:A:268:GLU:O	2:A:540[A]:PLP:H6	2.17	0.45
1:A:307:ARG:HB2	1:A:308:PRO:HD3	1.99	0.45
1:A:342:CYS:H	1:A:387:ASN:ND2	2.14	0.44
1:A:297:LEU:HD22	1:A:338:ALA:HB3	2.00	0.44
1:A:249:ASN:HD22	1:A:252:ARG:NH1	2.14	0.44
1:A:268:GLU:O	2:A:540[C]:PLP:H6	2.19	0.43
1:A:50:ARG:O	1:A:268:GLU:HA	2.20	0.42
1:A:102:ASP:OD2	1:A:164:HIS:CD2	2.72	0.42
1:A:116:GLN:NE2	5:A:559:HOH:O	2.51	0.42
1:A:16:ASN:O	1:A:20:LEU:HG	2.20	0.41
1:A:63:ARG:NH2	5:A:856:HOH:O	2.52	0.41
1:A:249:ASN:HD22	1:A:252:ARG:HE	1.66	0.41
1:A:149:HIS:HB3	5:A:908:HOH:O	2.21	0.41
1:A:258:HIS:HB2	5:A:919:HOH:O	2.19	0.41
1:A:307:ARG:HD3	1:A:315:HIS:HE1	1.85	0.41
1:A:297:LEU:HA	1:A:338:ALA:O	2.22	0.40
1:A:142:ARG:HG3	1:A:189:HIS:HD2	1.86	0.40
1:A:3:HIS:NE2	1:A:12:LEU:HB3	2.36	0.40

All (1) symmetry-related close contacts are listed below. The label for Atom-2 includes the symmetry operator and encoded unit-cell translations to be applied.

Atom-1	Atom-2	Interatomic distance (Å)	Clash overlap (Å)
5:A:910:HOH:O	5:A:910:HOH:O[10_665]	2.19	0.01

5.3 Torsion angles [i](#)

5.3.1 Protein backbone [i](#)

In the following table, the Percentiles column shows the percent Ramachandran outliers of the chain as a percentile score with respect to all X-ray entries followed by that with respect to entries of similar resolution.

The Analysed column shows the number of residues for which the backbone conformation was analysed, and the total number of residues.

Mol	Chain	Analysed	Favoured	Allowed	Outliers	Percentiles
1	A	417/425 (98%)	406 (97%)	9 (2%)	2 (0%)	29 31

All (2) Ramachandran outliers are listed below:

Mol	Chain	Res	Type
1	A	8	THR
1	A	56	CYS

5.3.2 Protein sidechains [i](#)

In the following table, the Percentiles column shows the percent sidechain outliers of the chain as a percentile score with respect to all X-ray entries followed by that with respect to entries of similar resolution.

The Analysed column shows the number of residues for which the sidechain conformation was analysed, and the total number of residues.

Mol	Chain	Analysed	Rotameric	Outliers	Percentiles
1	A	344/350 (98%)	328 (95%)	16 (5%)	26 33

All (16) residues with a non-rotameric sidechain are listed below:

Mol	Chain	Res	Type
1	A	9	ASP
1	A	12	LEU
1	A	234	GLN
1	A	273	LEU

Continued on next page...

Continued from previous page...

Mol	Chain	Res	Type
1	A	274	VAL
1	A	297	LEU
1	A	302	PHE
1	A	306	MET
1	A	310	MET
1	A	325	ARG
1	A	331	PRO
1	A	336	VAL
1	A	342	CYS
1	A	343	GLU
1	A	404	LEU
1	A	410	THR

Sometimes sidechains can be flipped to improve hydrogen bonding and reduce clashes. All (14) such sidechains are listed below:

Mol	Chain	Res	Type
1	A	45	GLN
1	A	60	HIS
1	A	116	GLN
1	A	164	HIS
1	A	189	HIS
1	A	211	GLN
1	A	220	GLN
1	A	249	ASN
1	A	283	GLN
1	A	289	GLN
1	A	294	HIS
1	A	315	HIS
1	A	373	HIS
1	A	387	ASN

5.3.3 RNA [i](#)

There are no RNA molecules in this entry.

5.4 Non-standard residues in protein, DNA, RNA chains [i](#)

There are no non-standard protein/DNA/RNA residues in this entry.

5.5 Carbohydrates [i](#)

There are no monosaccharides in this entry.

5.6 Ligand geometry [i](#)

5 ligands are modelled in this entry.

In the following table, the Counts columns list the number of bonds (or angles) for which Mogul statistics could be retrieved, the number of bonds (or angles) that are observed in the model and the number of bonds (or angles) that are defined in the Chemical Component Dictionary. The Link column lists molecule types, if any, to which the group is linked. The Z score for a bond length (or angle) is the number of standard deviations the observed value is removed from the expected value. A bond length (or angle) with $|Z| > 2$ is considered an outlier worth inspection. RMSZ is the root-mean-square of all Z scores of the bond lengths (or angles).

Mol	Type	Chain	Res	Link	Bond lengths			Bond angles		
					Counts	RMSZ	# Z > 2	Counts	RMSZ	# Z > 2
2	PLP	A	540[B]	3	15,15,16	1.66	5 (33%)	20,22,23	1.59	5 (25%)
4	DLY	A	542[B]	2	8,9,9	1.19	1 (12%)	9,10,10	1.66	2 (22%)
2	PLP	A	540[C]	4	15,15,16	1.64	5 (33%)	20,22,23	1.58	5 (25%)
2	PLP	A	540[A]	1	15,15,16	1.58	5 (33%)	20,22,23	3.20	7 (35%)
3	LYS	A	541[A]	2	8,9,9	0.61	0	9,10,10	0.50	0

In the following table, the Chirals column lists the number of chiral outliers, the number of chiral centers analysed, the number of these observed in the model and the number defined in the Chemical Component Dictionary. Similar counts are reported in the Torsion and Rings columns. '-' means no outliers of that kind were identified.

Mol	Type	Chain	Res	Link	Chirals	Torsions	Rings
2	PLP	A	540[B]	3	-	1/6/6/8	0/1/1/1
4	DLY	A	542[B]	2	1/1/2/2	6/9/9/9	-
2	PLP	A	540[C]	4	-	1/6/6/8	0/1/1/1
2	PLP	A	540[A]	1	-	0/6/6/8	0/1/1/1
3	LYS	A	541[A]	2	-	1/9/9/9	-

All (16) bond length outliers are listed below:

Mol	Chain	Res	Type	Atoms	Z	Observed(Å)	Ideal(Å)
2	A	540[C]	PLP	O3-C3	-3.08	1.29	1.37
2	A	540[A]	PLP	O3-C3	-3.08	1.29	1.37
2	A	540[B]	PLP	O3-C3	-3.06	1.29	1.37
2	A	540[B]	PLP	C5-C4	2.93	1.43	1.40

Continued on next page...

Continued from previous page...

Mol	Chain	Res	Type	Atoms	Z	Observed(Å)	Ideal(Å)
2	A	540[C]	PLP	C5-C4	2.67	1.43	1.40
4	A	542[B]	DLY	CB-CA	-2.52	1.47	1.53
2	A	540[B]	PLP	C4A-C4	-2.44	1.46	1.51
2	A	540[C]	PLP	C2A-C2	2.40	1.54	1.50
2	A	540[B]	PLP	C2A-C2	2.39	1.54	1.50
2	A	540[A]	PLP	C2A-C2	2.26	1.54	1.50
2	A	540[C]	PLP	C4A-C4	-2.22	1.47	1.51
2	A	540[A]	PLP	C2-N1	2.12	1.37	1.33
2	A	540[C]	PLP	C2-N1	2.11	1.37	1.33
2	A	540[A]	PLP	C6-C5	2.10	1.42	1.37
2	A	540[A]	PLP	C3-C4	2.09	1.44	1.40
2	A	540[B]	PLP	C2-N1	2.04	1.37	1.33

All (19) bond angle outliers are listed below:

Mol	Chain	Res	Type	Atoms	Z	Observed(°)	Ideal(°)
2	A	540[A]	PLP	C4A-C4-C5	-9.36	111.30	120.94
2	A	540[A]	PLP	C4A-C4-C3	7.35	132.95	120.50
2	A	540[A]	PLP	C6-C5-C4	4.60	121.78	118.16
4	A	542[B]	DLY	CB-CA-N	3.66	119.77	110.17
2	A	540[A]	PLP	C5-C6-N1	-3.29	118.34	123.82
2	A	540[C]	PLP	C6-C5-C4	3.27	120.73	118.16
2	A	540[B]	PLP	C6-C5-C4	3.14	120.63	118.16
2	A	540[B]	PLP	C5-C6-N1	-3.00	118.82	123.82
2	A	540[C]	PLP	C5-C6-N1	-2.98	118.85	123.82
2	A	540[B]	PLP	C6-N1-C2	2.77	124.30	119.17
2	A	540[A]	PLP	C3-C4-C5	-2.76	115.75	118.74
2	A	540[C]	PLP	C6-N1-C2	2.72	124.21	119.17
2	A	540[C]	PLP	C2A-C2-C3	2.56	124.04	120.89
2	A	540[A]	PLP	C6-N1-C2	2.54	123.88	119.17
2	A	540[B]	PLP	C2A-C2-C3	2.47	123.94	120.89
2	A	540[C]	PLP	C3-C2-N1	-2.12	118.03	120.77
2	A	540[B]	PLP	C3-C2-N1	-2.11	118.05	120.77
2	A	540[A]	PLP	C2A-C2-C3	2.05	123.42	120.89
4	A	542[B]	DLY	CB-CA-C	2.00	115.08	110.30

All (1) chirality outliers are listed below:

Mol	Chain	Res	Type	Atom
4	A	542[B]	DLY	CA

All (9) torsion outliers are listed below:

Mol	Chain	Res	Type	Atoms
2	A	540[B]	PLP	C4-C5-C5A-O4P
4	A	542[B]	DLY	CA-CB-CG-CD
4	A	542[B]	DLY	OXT-C-CA-N
4	A	542[B]	DLY	O-C-CA-N
3	A	541[A]	LYS	C-CA-CB-CG
2	A	540[C]	PLP	C4-C5-C5A-O4P
4	A	542[B]	DLY	CG-CD-CE-NZ
4	A	542[B]	DLY	CE-CD-CG-CB
4	A	542[B]	DLY	N-CA-CB-CG

There are no ring outliers.

5 monomers are involved in 14 short contacts:

Mol	Chain	Res	Type	Clashes	Symm-Clashes
2	A	540[B]	PLP	4	0
4	A	542[B]	DLY	3	0
2	A	540[C]	PLP	4	0
2	A	540[A]	PLP	1	0
3	A	541[A]	LYS	2	0

5.7 Other polymers [i](#)

There are no such residues in this entry.

5.8 Polymer linkage issues [i](#)

There are no chain breaks in this entry.

6 Fit of model and data

6.1 Protein, DNA and RNA chains

EDS was not executed - this section is therefore empty.

6.2 Non-standard residues in protein, DNA, RNA chains

EDS was not executed - this section is therefore empty.

6.3 Carbohydrates

EDS was not executed - this section is therefore empty.

6.4 Ligands

EDS was not executed - this section is therefore empty.

6.5 Other polymers

EDS was not executed - this section is therefore empty.