



# Full wwPDB X-ray Structure Validation Report ⓘ

Jun 12, 2024 – 06:13 AM EDT

PDB ID : 1KI7  
Title : CRYSTAL STRUCTURE OF THYMIDINE KINASE FROM HERPES SIMPLEX VIRUS TYPE I COMPLEXED WITH 5-IODODEOXYURIDINE  
Authors : Champness, J.N.; Bennett, M.S.; Wien, F.; Visse, R.; Summers, W.C.; Sander-son, M.R.  
Deposited on : 1998-05-15  
Resolution : 2.20 Å(reported)

This is a Full wwPDB X-ray Structure Validation Report for a publicly released PDB entry.

We welcome your comments at [validation@mail.wwpdb.org](mailto:validation@mail.wwpdb.org)

A user guide is available at

<https://www.wwpdb.org/validation/2017/XrayValidationReportHelp>

with specific help available everywhere you see the ⓘ symbol.

The types of validation reports are described at

<http://www.wwpdb.org/validation/2017/FAQs#types>.

---

The following versions of software and data (see [references ⓘ](#)) were used in the production of this report:

MolProbity : 4.02b-467  
Mogul : 2022.3.0, CSD as543be (2022)  
Xtriage (Phenix) : 1.20.1  
EDS : 2.36.2  
buster-report : 1.1.7 (2018)  
Percentile statistics : 20191225.v01 (using entries in the PDB archive December 25th 2019)  
Refmac : 5.8.0158  
CCP4 : 7.0.044 (Gargrove)  
Ideal geometry (proteins) : Engh & Huber (2001)  
Ideal geometry (DNA, RNA) : Parkinson et al. (1996)  
Validation Pipeline (wwPDB-VP) : 2.36.2

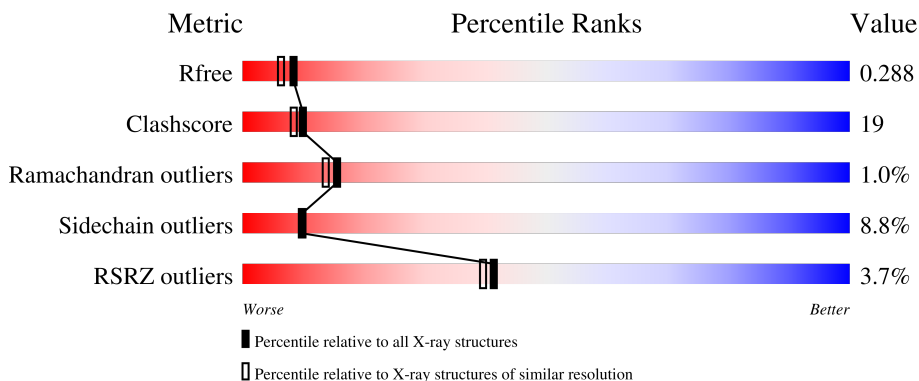
# 1 Overall quality at a glance

The following experimental techniques were used to determine the structure:

*X-RAY DIFFRACTION*

The reported resolution of this entry is 2.20 Å.

Percentile scores (ranging between 0-100) for global validation metrics of the entry are shown in the following graphic. The table shows the number of entries on which the scores are based.



Metric	Whole archive (#Entries)	Similar resolution (#Entries, resolution range(Å))
$R_{free}$	130704	4898 (2.20-2.20)
Clashscore	141614	5594 (2.20-2.20)
Ramachandran outliers	138981	5503 (2.20-2.20)
Sidechain outliers	138945	5504 (2.20-2.20)
RSRZ outliers	127900	4800 (2.20-2.20)

The table below summarises the geometric issues observed across the polymeric chains and their fit to the electron density. The red, orange, yellow and green segments of the lower bar indicate the fraction of residues that contain outliers for  $\geq 3$ , 2, 1 and 0 types of geometric quality criteria respectively. A grey segment represents the fraction of residues that are not modelled. The numeric value for each fraction is indicated below the corresponding segment, with a dot representing fractions  $\leq 5\%$ . The upper red bar (where present) indicates the fraction of residues that have poor fit to the electron density. The numeric value is given above the bar.

Mol	Chain	Length	Quality of chain
1	A	331	 2% 54% 34% 8%
1	B	331	 5% 60% 32% 6%

## 2 Entry composition [i](#)

There are 4 unique types of molecules in this entry. The entry contains 4878 atoms, of which 0 are hydrogens and 0 are deuteriums.

In the tables below, the ZeroOcc column contains the number of atoms modelled with zero occupancy, the AltConf column contains the number of residues with at least one atom in alternate conformation and the Trace column contains the number of residues modelled with at most 2 atoms.

- Molecule 1 is a protein called THYMIDINE KINASE.

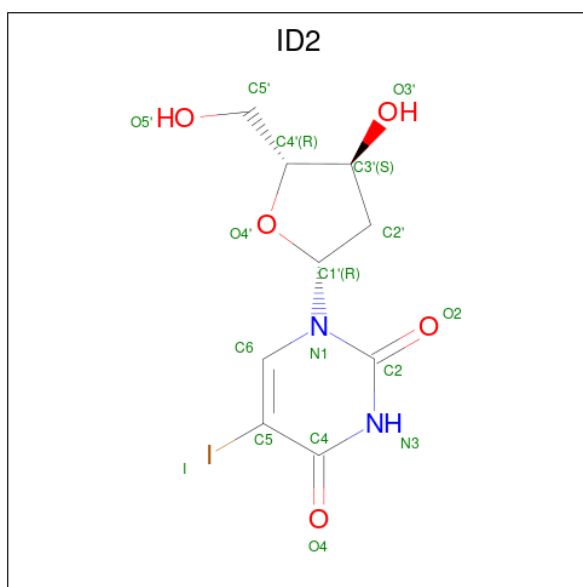
Mol	Chain	Residues	Atoms					ZeroOcc	AltConf	Trace
			Total	C	N	O	S			
1	A	305	Total 2313	C 1473	N 407	O 418	S 15	0	0	3
1	B	312	Total 2360	C 1504	N 415	O 426	S 15	0	0	3

- Molecule 2 is SULFATE ION (three-letter code: SO4) (formula: O<sub>4</sub>S).



Mol	Chain	Residues	Atoms			ZeroOcc	AltConf
			Total	O	S		
2	A	1	Total 5	O 4	S 1	0	0
2	B	1	Total 5	O 4	S 1	0	0

- Molecule 3 is 5-IODODEOXYURIDINE (three-letter code: ID2) (formula: C<sub>9</sub>H<sub>11</sub>IN<sub>2</sub>O<sub>5</sub>).



Mol	Chain	Residues	Atoms					ZeroOcc	AltConf
			Total	C	I	N	O		
3	A	1	17	9	1	2	5	0	0
3	B	1	17	9	1	2	5	0	0

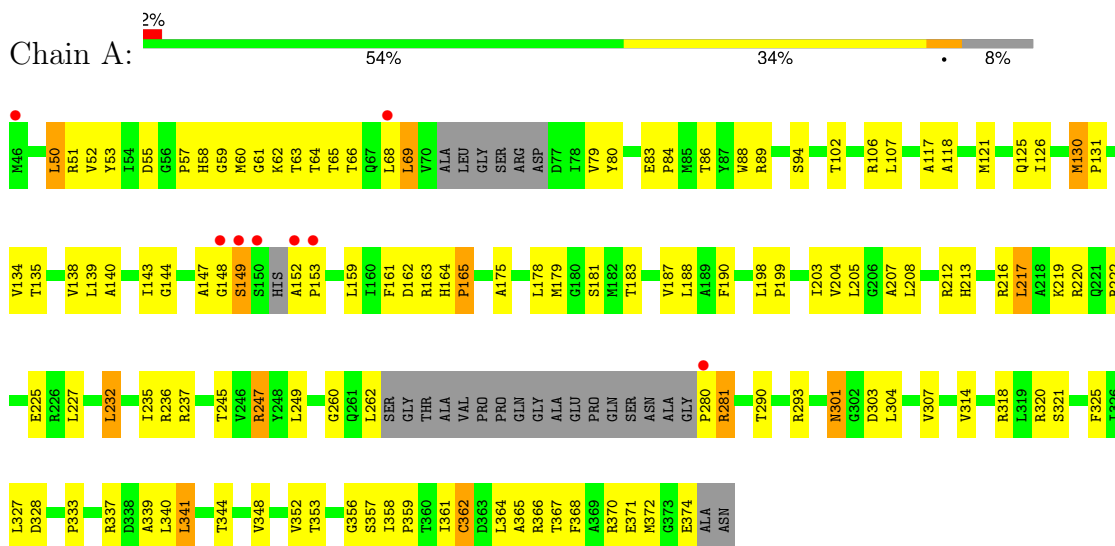
- Molecule 4 is water.

Mol	Chain	Residues	Atoms		ZeroOcc	AltConf
			Total	O		
4	A	91	91	91	0	0
4	B	70	70	70	0	0

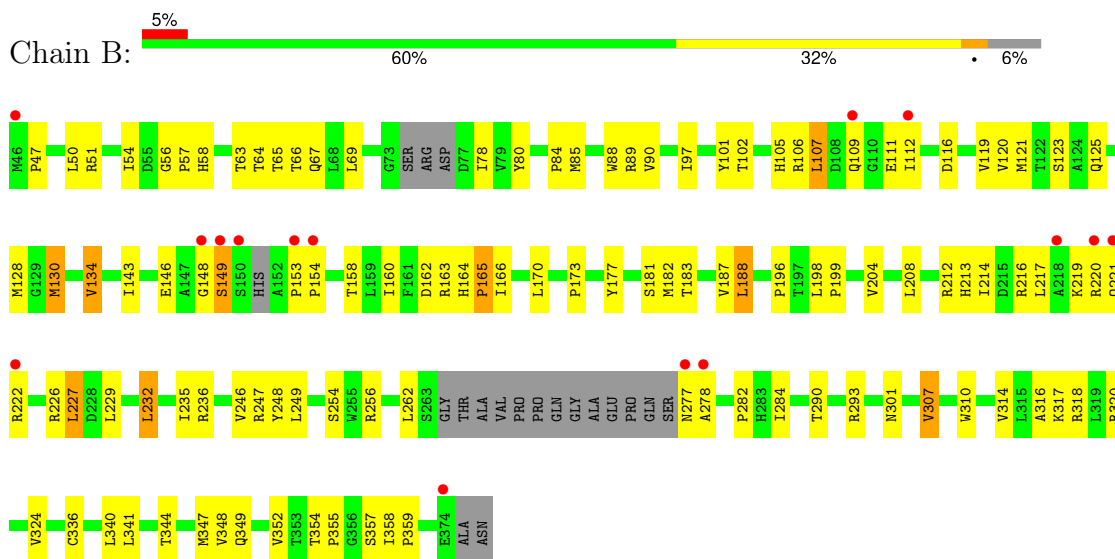
### 3 Residue-property plots i

These plots are drawn for all protein, RNA, DNA and oligosaccharide chains in the entry. The first graphic for a chain summarises the proportions of the various outlier classes displayed in the second graphic. The second graphic shows the sequence view annotated by issues in geometry and electron density. Residues are color-coded according to the number of geometric quality criteria for which they contain at least one outlier: green = 0, yellow = 1, orange = 2 and red = 3 or more. A red dot above a residue indicates a poor fit to the electron density ( $RSRZ > 2$ ). Stretches of 2 or more consecutive residues without any outlier are shown as a green connector. Residues present in the sample, but not in the model, are shown in grey.

#### ● Molecule 1: THYMIDINE KINASE



#### ● Molecule 1: THYMIDINE KINASE



## 4 Data and refinement statistics i

Property	Value	Source
Space group	C 2 2 21	Depositor
Cell constants a, b, c, $\alpha$ , $\beta$ , $\gamma$	113.60Å 116.60Å 108.40Å 90.00° 90.00° 90.00°	Depositor
Resolution (Å)	12.00 – 2.20 11.99 – 2.20	Depositor EDS
% Data completeness (in resolution range)	78.0 (12.00-2.20) 97.4 (11.99-2.20)	Depositor EDS
$R_{merge}$	(Not available)	Depositor
$R_{sym}$	0.07	Depositor
$\langle I/\sigma(I) \rangle$ <sup>1</sup>	3.67 (at 2.21Å)	Xtrriage
Refinement program	X-PLOR 3.1	Depositor
R, $R_{free}$	0.206 , 0.286 0.226 , 0.288	Depositor DCC
$R_{free}$ test set	3588 reflections (10.06%)	wwPDB-VP
Wilson B-factor (Å <sup>2</sup> )	25.1	Xtrriage
Anisotropy	0.260	Xtrriage
Bulk solvent $k_{sol}$ (e/Å <sup>3</sup> ), $B_{sol}$ (Å <sup>2</sup> )	0.35 , 57.0	EDS
L-test for twinning <sup>2</sup>	$\langle  L  \rangle = 0.49$ , $\langle L^2 \rangle = 0.33$	Xtrriage
Estimated twinning fraction	0.029 for -k,-h,-l	Xtrriage
$F_o, F_c$ correlation	0.92	EDS
Total number of atoms	4878	wwPDB-VP
Average B, all atoms (Å <sup>2</sup> )	16.0	wwPDB-VP

Xtrriage's analysis on translational NCS is as follows: *The largest off-origin peak in the Patterson function is 5.34% of the height of the origin peak. No significant pseudotranslation is detected.*

<sup>1</sup>Intensities estimated from amplitudes.

<sup>2</sup>Theoretical values of  $\langle |L| \rangle$ ,  $\langle L^2 \rangle$  for acentric reflections are 0.5, 0.333 respectively for untwinned datasets, and 0.375, 0.2 for perfectly twinned datasets.

## 5 Model quality [i](#)

### 5.1 Standard geometry [i](#)

Bond lengths and bond angles in the following residue types are not validated in this section: ID2, SO4

The Z score for a bond length (or angle) is the number of standard deviations the observed value is removed from the expected value. A bond length (or angle) with  $|Z| > 5$  is considered an outlier worth inspection. RMSZ is the root-mean-square of all Z scores of the bond lengths (or angles).

Mol	Chain	Bond lengths		Bond angles	
		RMSZ	# Z  >5	RMSZ	# Z  >5
1	A	0.65	0/2366	0.78	1/3231 (0.0%)
1	B	0.69	0/2414	0.82	0/3298
All	All	0.67	0/4780	0.80	1/6529 (0.0%)

There are no bond length outliers.

All (1) bond angle outliers are listed below:

Mol	Chain	Res	Type	Atoms	Z	Observed(°)	Ideal(°)
1	A	280	PRO	N-CA-CB	6.19	110.73	103.30

There are no chirality outliers.

There are no planarity outliers.

### 5.2 Too-close contacts [i](#)

In the following table, the Non-H and H(model) columns list the number of non-hydrogen atoms and hydrogen atoms in the chain respectively. The H(added) column lists the number of hydrogen atoms added and optimized by MolProbity. The Clashes column lists the number of clashes within the asymmetric unit, whereas Symm-Clashes lists symmetry-related clashes.

Mol	Chain	Non-H	H(model)	H(added)	Clashes	Symm-Clashes
1	A	2313	0	2319	91	0
1	B	2360	0	2374	91	0
2	A	5	0	0	1	0
2	B	5	0	0	0	0
3	A	17	0	11	2	0
3	B	17	0	10	4	0
4	A	91	0	0	6	0
4	B	70	0	0	1	0

*Continued on next page...*

*Continued from previous page...*

Mol	Chain	Non-H	H(model)	H(added)	Clashes	Symm-Clashes
All	All	4878	0	4714	180	0

The all-atom clashscore is defined as the number of clashes found per 1000 atoms (including hydrogen atoms). The all-atom clashscore for this structure is 19.

All (180) close contacts within the same asymmetric unit are listed below, sorted by their clash magnitude.

Atom-1	Atom-2	Interatomic distance (Å)	Clash overlap (Å)
1:B:65:THR:HG21	1:B:336:CYS:HB2	1.57	0.84
1:A:68:LEU:HB3	1:A:337:ARG:HD3	1.64	0.80
1:B:246:VAL:HG21	1:B:324:VAL:HG21	1.65	0.79
1:A:69:LEU:HG	1:A:340:LEU:HD23	1.67	0.76
1:A:217:LEU:HD12	1:A:232:LEU:HG	1.67	0.76
1:A:293:ARG:HH11	1:A:293:ARG:HG3	1.53	0.73
1:A:130:MET:HB3	1:A:131:PRO:HD3	1.71	0.73
1:B:66:THR:HG23	1:B:160:ILE:HG21	1.69	0.72
1:B:66:THR:HG23	1:B:160:ILE:CG2	2.19	0.71
1:A:232:LEU:O	1:A:236:ARG:HG3	1.89	0.71
1:B:222:ARG:NH1	3:B:2:ID2:H5'2	2.05	0.71
1:B:247:ARG:HD2	1:B:282:PRO:HD3	1.73	0.70
1:B:232:LEU:O	1:B:236:ARG:HG3	1.92	0.70
1:B:63:THR:O	1:B:67:GLN:HG2	1.92	0.70
1:A:62:LYS:HZ2	1:A:62:LYS:HB2	1.58	0.69
1:B:341:LEU:O	1:B:341:LEU:HD13	1.94	0.69
1:B:358:ILE:HB	1:B:359:PRO:HD3	1.75	0.68
1:B:69:LEU:HD11	1:B:341:LEU:HD23	1.76	0.67
1:B:217:LEU:HD13	1:B:227:LEU:CD1	2.25	0.67
1:B:109:GLN:HB3	1:B:111:GLU:HG3	1.78	0.66
1:A:83:GLU:HG2	1:A:88:TRP:CH2	2.32	0.65
1:B:121:MET:HB3	1:B:182:MET:HE2	1.79	0.64
1:B:69:LEU:HD22	1:B:340:LEU:CD2	2.28	0.64
1:A:213:HIS:CE1	1:A:232:LEU:HD21	2.33	0.63
1:A:301:ASN:HD21	1:A:303:ASP:HB2	1.62	0.63
1:B:78:ILE:HG12	1:B:158:THR:HB	1.79	0.63
1:A:356:GLY:O	1:A:359:PRO:HD2	1.98	0.62
1:B:262:LEU:HD11	1:B:284:ILE:HG12	1.82	0.62
1:A:51:ARG:NH2	1:A:199:PRO:O	2.32	0.61
1:A:118:ALA:HA	1:A:181:SER:O	1.99	0.61
1:B:107:LEU:HA	1:B:112:ILE:HG22	1.82	0.61
1:A:341:LEU:O	1:A:344:THR:HB	2.01	0.60
1:A:149:SER:OG	1:A:348:VAL:HG13	2.01	0.60

*Continued on next page...*



*Continued from previous page...*

Atom-1	Atom-2	Interatomic distance (Å)	Clash overlap (Å)
1:A:117:ALA:O	1:A:121:MET:HB2	2.02	0.60
1:B:65:THR:HG21	1:B:336:CYS:CB	2.29	0.59
1:B:217:LEU:HD13	1:B:227:LEU:HD11	1.85	0.59
1:B:248:TYR:HB2	1:B:282:PRO:HG2	1.84	0.59
1:B:314:VAL:O	1:B:318:ARG:HG2	2.04	0.58
1:B:125:GLN:HE22	3:B:2:ID2:HN3	1.51	0.57
1:B:116:ASP:O	1:B:120:VAL:HG23	2.05	0.57
1:A:63:THR:HA	1:A:66:THR:HG22	1.86	0.57
1:A:207:ALA:HB3	1:A:328:ASP:HA	1.87	0.57
1:A:55:ASP:O	1:A:205:LEU:HA	2.05	0.56
1:B:262:LEU:HD23	1:B:293:ARG:HG2	1.87	0.56
1:A:62:LYS:HB2	1:A:62:LYS:NZ	2.19	0.56
1:B:50:LEU:HD12	1:B:158:THR:HG23	1.88	0.56
1:B:56:GLY:O	1:B:163:ARG:NH2	2.39	0.56
1:B:101:TYR:HB3	1:B:226:ARG:HG2	1.87	0.56
1:B:97:ILE:HD12	3:B:2:ID2:O4'	2.06	0.55
1:B:51:ARG:NH2	1:B:199:PRO:O	2.39	0.55
1:A:69:LEU:HD22	1:A:337:ARG:HG3	1.89	0.55
1:A:301:ASN:HD21	1:A:303:ASP:CB	2.18	0.55
1:B:66:THR:HG21	1:B:80:TYR:CE1	2.42	0.55
1:A:125:GLN:HE22	3:A:1:ID2:HN3	1.55	0.55
1:A:61:GLY:O	1:A:65:THR:HG23	2.06	0.54
1:A:352:VAL:HB	1:A:357:SER:HB2	1.89	0.54
1:B:85:MET:O	1:B:89:ARG:HG2	2.09	0.53
1:A:53:TYR:HB2	1:A:203:ILE:HD13	1.90	0.53
1:A:352:VAL:HB	1:A:357:SER:CB	2.39	0.53
1:A:63:THR:HG23	2:A:3:SO4:O1	2.08	0.52
4:A:525:HOH:O	1:B:317:LYS:HD2	2.09	0.52
1:B:64:THR:O	1:B:67:GLN:HB2	2.10	0.52
1:A:222:ARG:HG3	3:A:1:ID2:H4'	1.91	0.52
1:B:219:LYS:HB2	1:B:219:LYS:NZ	2.24	0.52
1:B:277:ASN:CG	1:B:278:ALA:H	2.13	0.52
1:B:84:PRO:HG2	1:B:88:TRP:CE2	2.45	0.52
1:B:247:ARG:HG3	1:B:277:ASN:HD21	1.75	0.52
1:B:262:LEU:HD23	1:B:293:ARG:CG	2.39	0.52
1:A:222:ARG:HG2	1:A:225:GLU:OE1	2.10	0.51
1:A:219:LYS:HB2	1:A:220:ARG:HH11	1.76	0.51
1:B:164:HIS:CD2	1:B:165:PRO:HD2	2.45	0.51
1:B:58:HIS:H	1:B:58:HIS:CD2	2.29	0.51
1:A:358:ILE:HB	1:A:359:PRO:HD3	1.94	0.50
1:A:314:VAL:O	1:A:318:ARG:HG2	2.12	0.50

*Continued on next page...*

*Continued from previous page...*

Atom-1	Atom-2	Interatomic distance (Å)	Clash overlap (Å)
1:A:372:MET:CE	1:B:307:VAL:HG13	2.42	0.50
1:A:152:ALA:HB1	1:A:153:PRO:HD2	1.92	0.50
1:B:47:PRO:HG2	1:B:352:VAL:CG2	2.42	0.49
1:B:310:TRP:O	1:B:314:VAL:HG23	2.12	0.49
1:B:213:HIS:CE1	1:B:232:LEU:HD21	2.47	0.49
1:B:121:MET:HB3	1:B:182:MET:CE	2.43	0.49
1:A:69:LEU:HD11	1:A:341:LEU:HD22	1.94	0.49
1:B:69:LEU:HD23	1:B:160:ILE:HD13	1.93	0.49
1:A:356:GLY:C	1:A:359:PRO:HD2	2.33	0.48
1:B:149:SER:HB3	1:B:349:GLN:HE21	1.78	0.48
1:B:121:MET:HG3	1:B:181:SER:HB2	1.94	0.48
1:B:214:ILE:HG12	1:B:229:LEU:HD22	1.95	0.48
1:B:149:SER:HB3	1:B:349:GLN:NE2	2.28	0.48
1:B:217:LEU:CD1	1:B:232:LEU:HG	2.44	0.48
1:B:143:ILE:HG13	1:B:198:LEU:HD13	1.96	0.48
1:B:66:THR:CG2	1:B:80:TYR:CE1	2.96	0.48
1:B:69:LEU:HD23	1:B:160:ILE:CD1	2.44	0.48
1:B:232:LEU:O	1:B:235:ILE:HG22	2.13	0.48
1:A:301:ASN:HD22	1:A:301:ASN:C	2.17	0.48
1:A:63:THR:HG22	1:A:162:ASP:OD2	2.14	0.47
1:B:148:GLY:H	1:B:349:GLN:HB2	1.79	0.47
1:B:208:LEU:O	1:B:236:ARG:NH2	2.44	0.47
1:A:293:ARG:O	1:A:293:ARG:HG2	2.15	0.47
1:A:262:LEU:N	4:A:598:HOH:O	2.47	0.47
1:A:83:GLU:HG2	1:A:88:TRP:CZ3	2.49	0.47
1:A:293:ARG:HG3	1:A:293:ARG:NH1	2.26	0.47
1:A:301:ASN:HD21	1:A:303:ASP:CG	2.17	0.47
1:B:102:THR:OG1	1:B:226:ARG:NH2	2.47	0.47
1:B:153:PRO:CB	1:B:154:PRO:HD2	2.44	0.47
1:A:144:GLY:O	1:A:199:PRO:HG3	2.14	0.46
1:A:281:ARG:N	1:A:281:ARG:HD2	2.31	0.46
1:A:162:ASP:O	1:A:163:ARG:HB2	2.15	0.46
1:A:175:ALA:O	1:A:179:MET:HG2	2.15	0.46
1:B:69:LEU:HD22	1:B:340:LEU:HD23	1.96	0.46
1:B:164:HIS:CG	1:B:165:PRO:HD2	2.50	0.46
1:A:57:PRO:HB3	1:A:235:ILE:HG23	1.98	0.46
1:B:112:ILE:HG13	1:B:116:ASP:CB	2.45	0.46
1:B:344:THR:O	1:B:347:MET:HB2	2.15	0.46
1:A:58:HIS:H	1:A:58:HIS:CD2	2.33	0.46
1:A:83:GLU:OE1	1:A:222:ARG:NH1	2.49	0.45
1:A:301:ASN:ND2	1:A:303:ASP:HB2	2.31	0.45

*Continued on next page...*

*Continued from previous page...*

Atom-1	Atom-2	Interatomic distance (Å)	Clash overlap (Å)
1:A:86:THR:HB	1:A:372:MET:HA	1.98	0.45
1:A:102:THR:O	1:A:106:ARG:HG3	2.16	0.45
1:B:97:ILE:HD11	1:B:128:MET:HE1	1.97	0.45
1:A:138:VAL:HG21	1:B:310:TRP:HB3	1.99	0.45
1:A:62:LYS:NZ	1:A:62:LYS:CB	2.80	0.45
1:A:327:LEU:HD11	1:A:339:ALA:HB3	1.99	0.45
1:A:66:THR:HG23	1:A:80:TYR:CE1	2.52	0.45
1:A:79:VAL:HG11	1:A:365:ALA:CB	2.47	0.45
1:A:164:HIS:CG	1:A:165:PRO:HD2	2.52	0.45
1:B:249:LEU:HD11	1:B:316:ALA:HA	1.99	0.45
1:A:86:THR:OG1	1:A:374:GLU:HG3	2.17	0.44
1:A:143:ILE:HD12	4:A:536:HOH:O	2.17	0.44
1:A:320:ARG:HG3	1:A:321:SER:N	2.31	0.44
1:A:57:PRO:O	1:A:60:MET:HE2	2.16	0.44
4:A:567:HOH:O	1:B:130:MET:HA	2.16	0.44
1:B:57:PRO:HB2	1:B:213:HIS:HE1	1.82	0.44
1:B:149:SER:OG	1:B:347:MET:O	2.34	0.44
1:A:368:PHE:C	1:A:368:PHE:CD1	2.91	0.44
1:A:245:THR:O	1:A:249:LEU:HG	2.17	0.44
1:B:66:THR:HG23	1:B:160:ILE:HG22	1.95	0.44
1:A:213:HIS:O	1:A:217:LEU:HB2	2.17	0.44
1:A:140:ALA:HA	1:A:198:LEU:HD21	2.00	0.43
1:A:204:VAL:HA	1:A:325:PHE:O	2.18	0.43
1:B:153:PRO:HB3	1:B:154:PRO:HD2	2.00	0.43
1:A:62:LYS:HG2	4:A:613:HOH:O	2.18	0.43
1:A:135:THR:O	1:A:139:LEU:HB2	2.17	0.43
1:A:213:HIS:NE2	1:A:232:LEU:HD21	2.33	0.43
1:B:54:ILE:HD13	1:B:204:VAL:HB	2.01	0.43
1:B:112:ILE:HG13	1:B:116:ASP:HB3	1.99	0.43
1:B:352:VAL:HB	1:B:357:SER:HB2	2.00	0.43
1:B:102:THR:O	1:B:105:HIS:HB3	2.19	0.43
1:A:367:THR:O	1:A:370:ARG:HG2	2.19	0.43
1:B:354:THR:HG22	1:B:355:PRO:HD2	2.01	0.43
1:A:204:VAL:HG22	1:A:325:PHE:HB2	1.99	0.43
1:A:327:LEU:CD1	1:A:339:ALA:HB3	2.48	0.43
1:B:316:ALA:O	1:B:320:ARG:HB2	2.18	0.43
1:A:50:LEU:HD13	1:A:52:VAL:CG2	2.49	0.42
1:A:362:CYS:O	1:A:366:ARG:HG3	2.18	0.42
1:B:284:ILE:HG22	4:B:533:HOH:O	2.19	0.42
1:B:217:LEU:HD11	1:B:232:LEU:HG	2.01	0.42
1:A:159:LEU:HD13	1:A:161:PHE:CZ	2.54	0.42

*Continued on next page...*

Continued from previous page...

Atom-1	Atom-2	Interatomic distance (Å)	Clash overlap (Å)
1:B:102:THR:O	1:B:106:ARG:HG3	2.19	0.42
1:A:89:ARG:O	1:A:94:SER:HA	2.18	0.42
3:B:2:ID2:O5'	3:B:2:ID2:H6	2.19	0.42
1:A:84:PRO:HG2	1:A:88:TRP:CE2	2.55	0.42
1:A:371:GLU:OE2	1:B:307:VAL:HG22	2.20	0.41
1:B:58:HIS:O	1:B:213:HIS:NE2	2.42	0.41
1:B:146:GLU:OE2	1:B:348:VAL:HG11	2.20	0.41
1:B:183:THR:O	1:B:187:VAL:HG23	2.19	0.41
1:B:188:LEU:HD12	1:B:188:LEU:HA	1.94	0.41
1:A:208:LEU:O	1:A:236:ARG:NH2	2.53	0.41
1:A:183:THR:O	1:A:187:VAL:HG23	2.21	0.41
1:B:248:TYR:HA	1:B:282:PRO:HD2	2.02	0.41
1:A:126:ILE:CD1	1:A:190:PHE:HE1	2.34	0.41
1:A:361:ILE:O	1:A:364:LEU:HB3	2.21	0.41
1:B:166:ILE:O	1:B:170:LEU:HB3	2.20	0.41
1:B:246:VAL:HG11	1:B:324:VAL:HG23	2.02	0.41
1:A:69:LEU:CG	1:A:340:LEU:HD23	2.45	0.41
1:A:165:PRO:HA	4:A:628:HOH:O	2.20	0.41
1:A:281:ARG:HD2	1:A:281:ARG:H	1.85	0.41
1:A:59:GLY:O	1:A:216:ARG:HB2	2.21	0.40
1:A:147:ALA:O	1:A:148:GLY:C	2.60	0.40
1:A:247:ARG:HH11	1:A:247:ARG:HG2	1.87	0.40
1:B:219:LYS:O	1:B:221:GLN:N	2.54	0.40
1:B:130:MET:O	1:B:134:VAL:HG22	2.22	0.40

There are no symmetry-related clashes.

## 5.3 Torsion angles [i](#)

### 5.3.1 Protein backbone [i](#)

In the following table, the Percentiles column shows the percent Ramachandran outliers of the chain as a percentile score with respect to all X-ray entries followed by that with respect to entries of similar resolution.

The Analysed column shows the number of residues for which the backbone conformation was analysed, and the total number of residues.

Mol	Chain	Analysed	Favoured	Allowed	Outliers	Percentiles
1	A	297/331 (90%)	278 (94%)	17 (6%)	2 (1%)	22 22

Continued on next page...

*Continued from previous page...*

Mol	Chain	Analysed	Favoured	Allowed	Outliers	Percentiles	
1	B	304/331 (92%)	284 (93%)	16 (5%)	4 (1%)	12	9
All	All	601/662 (91%)	562 (94%)	33 (6%)	6 (1%)	15	14

All (6) Ramachandran outliers are listed below:

Mol	Chain	Res	Type
1	A	149	SER
1	B	220	ARG
1	B	149	SER
1	B	227	LEU
1	A	260	GLY
1	B	90	VAL

### 5.3.2 Protein sidechains [i](#)

In the following table, the Percentiles column shows the percent sidechain outliers of the chain as a percentile score with respect to all X-ray entries followed by that with respect to entries of similar resolution.

The Analysed column shows the number of residues for which the sidechain conformation was analysed, and the total number of residues.

Mol	Chain	Analysed	Rotameric	Outliers	Percentiles	
1	A	242/264 (92%)	218 (90%)	24 (10%)	8	7
1	B	247/264 (94%)	228 (92%)	19 (8%)	13	13
All	All	489/528 (93%)	446 (91%)	43 (9%)	10	10

All (43) residues with a non-rotameric sidechain are listed below:

Mol	Chain	Res	Type
1	A	50	LEU
1	A	64	THR
1	A	69	LEU
1	A	107	LEU
1	A	130	MET
1	A	134	VAL
1	A	165	PRO
1	A	178	LEU
1	A	188	LEU
1	A	212	ARG

*Continued on next page...*

*Continued from previous page...*

Mol	Chain	Res	Type
1	A	217	LEU
1	A	227	LEU
1	A	232	LEU
1	A	237	ARG
1	A	247	ARG
1	A	281	ARG
1	A	290	THR
1	A	301	ASN
1	A	304	LEU
1	A	307	VAL
1	A	333	PRO
1	A	341	LEU
1	A	353	THR
1	A	362	CYS
1	B	107	LEU
1	B	119	VAL
1	B	123	SER
1	B	130	MET
1	B	134	VAL
1	B	162	ASP
1	B	165	PRO
1	B	173	PRO
1	B	177	TYR
1	B	188	LEU
1	B	196	PRO
1	B	212	ARG
1	B	216	ARG
1	B	232	LEU
1	B	254	SER
1	B	256	ARG
1	B	290	THR
1	B	301	ASN
1	B	307	VAL

Sometimes sidechains can be flipped to improve hydrogen bonding and reduce clashes. All (11) such sidechains are listed below:

Mol	Chain	Res	Type
1	A	58	HIS
1	A	99	ASN
1	A	125	GLN
1	A	142	HIS
1	A	301	ASN

*Continued on next page...*

*Continued from previous page...*

Mol	Chain	Res	Type
1	A	323	HIS
1	A	351	HIS
1	B	58	HIS
1	B	125	GLN
1	B	142	HIS
1	B	277	ASN

### 5.3.3 RNA [i](#)

There are no RNA molecules in this entry.

### 5.4 Non-standard residues in protein, DNA, RNA chains [i](#)

There are no non-standard protein/DNA/RNA residues in this entry.

### 5.5 Carbohydrates [i](#)

There are no monosaccharides in this entry.

### 5.6 Ligand geometry [i](#)

4 ligands are modelled in this entry.

In the following table, the Counts columns list the number of bonds (or angles) for which Mogul statistics could be retrieved, the number of bonds (or angles) that are observed in the model and the number of bonds (or angles) that are defined in the Chemical Component Dictionary. The Link column lists molecule types, if any, to which the group is linked. The Z score for a bond length (or angle) is the number of standard deviations the observed value is removed from the expected value. A bond length (or angle) with  $|Z| > 2$  is considered an outlier worth inspection. RMSZ is the root-mean-square of all Z scores of the bond lengths (or angles).

Mol	Type	Chain	Res	Link	Bond lengths			Bond angles		
					Counts	RMSZ	$\# Z  > 2$	Counts	RMSZ	$\# Z  > 2$
2	SO4	B	4	-	4,4,4	0.78	0	6,6,6	0.76	0
2	SO4	A	3	-	4,4,4	0.84	0	6,6,6	0.62	0
3	ID2	A	1	-	18,18,18	1.26	2 (11%)	26,26,26	1.69	5 (19%)
3	ID2	B	2	-	18,18,18	1.64	3 (16%)	26,26,26	1.44	4 (15%)

In the following table, the Chirals column lists the number of chiral outliers, the number of chiral centers analysed, the number of these observed in the model and the number defined in the

Chemical Component Dictionary. Similar counts are reported in the Torsion and Rings columns. '-' means no outliers of that kind were identified.

Mol	Type	Chain	Res	Link	Chirals	Torsions	Rings
3	ID2	A	1	-	-	0/6/18/18	0/2/2/2
3	ID2	B	2	-	-	0/6/18/18	0/2/2/2

All (5) bond length outliers are listed below:

Mol	Chain	Res	Type	Atoms	Z	Observed(Å)	Ideal(Å)
3	B	2	ID2	C3'-C4'	-3.73	1.43	1.53
3	B	2	ID2	O3'-C3'	-3.51	1.36	1.43
3	A	1	ID2	O3'-C3'	-2.91	1.37	1.43
3	A	1	ID2	C4-C5	-2.82	1.39	1.45
3	B	2	ID2	C6-C5	2.21	1.41	1.35

All (9) bond angle outliers are listed below:

Mol	Chain	Res	Type	Atoms	Z	Observed(°)	Ideal(°)
3	A	1	ID2	O4'-C1'-C2'	-3.95	98.87	106.25
3	A	1	ID2	O2-C2-N1	3.74	127.67	122.80
3	B	2	ID2	N3-C2-N1	3.53	119.48	114.89
3	B	2	ID2	O4'-C1'-C2'	-3.42	99.86	106.25
3	B	2	ID2	O4'-C1'-N1	-2.61	103.24	107.86
3	A	1	ID2	O4'-C1'-N1	-2.49	103.45	107.86
3	A	1	ID2	C4'-O4'-C1'	2.48	115.41	109.51
3	A	1	ID2	C4-N3-C2	2.32	130.38	127.34
3	B	2	ID2	C6-N1-C2	-2.05	119.26	121.30

There are no chirality outliers.

There are no torsion outliers.

There are no ring outliers.

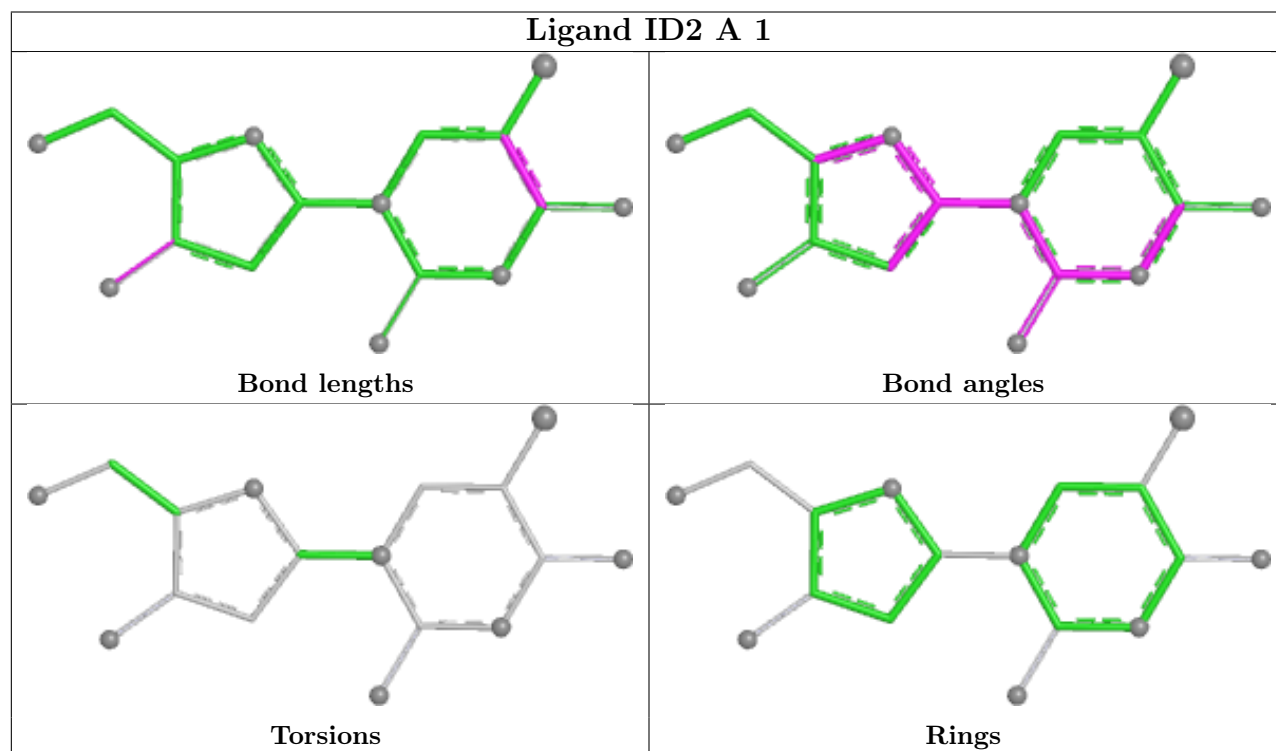
3 monomers are involved in 7 short contacts:

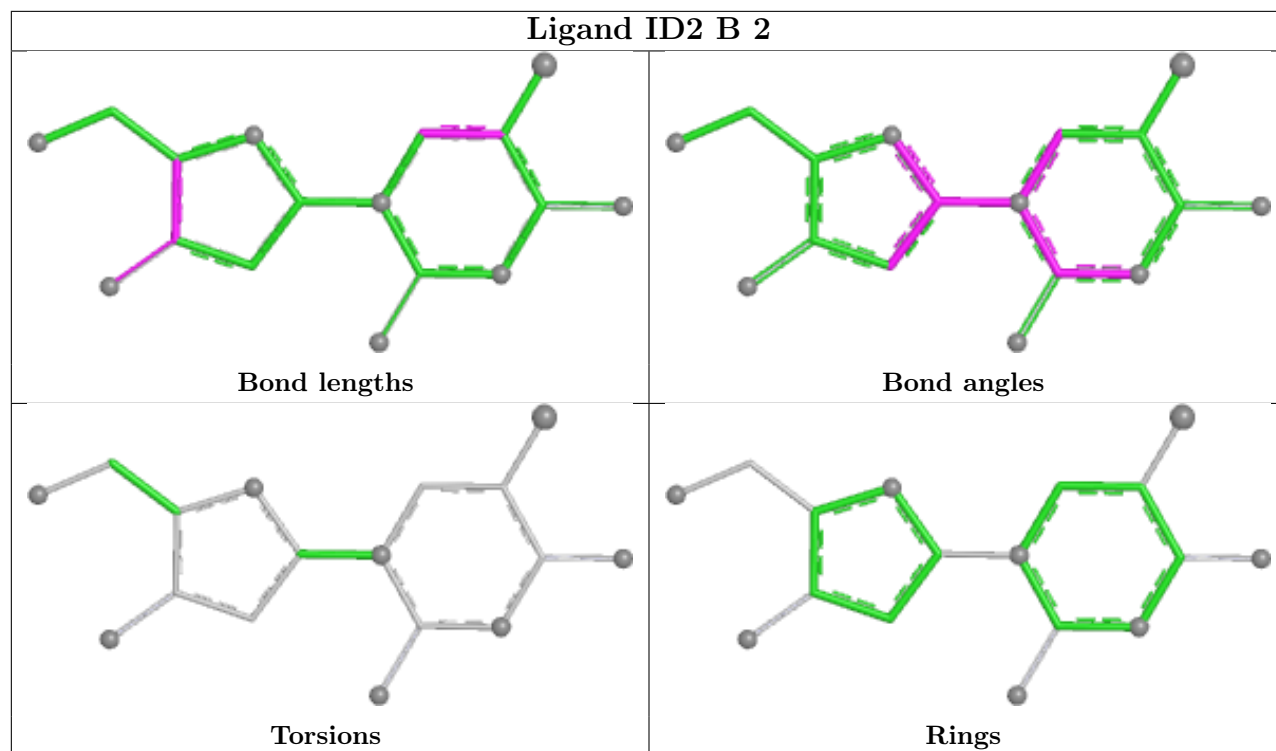
Mol	Chain	Res	Type	Clashes	Symm-Clashes
2	A	3	SO4	1	0
3	A	1	ID2	2	0
3	B	2	ID2	4	0

The following is a two-dimensional graphical depiction of Mogul quality analysis of bond lengths, bond angles, torsion angles, and ring geometry for all instances of the Ligand of Interest. In addition, ligands with molecular weight > 250 and outliers as shown on the validation Tables will also be included. For torsion angles, if less than 5% of the Mogul distribution of torsion angles is



within 10 degrees of the torsion angle in question, then that torsion angle is considered an outlier. Any bond that is central to one or more torsion angles identified as an outlier by Mogul will be highlighted in the graph. For rings, the root-mean-square deviation (RMSD) between the ring in question and similar rings identified by Mogul is calculated over all ring torsion angles. If the average RMSD is greater than 60 degrees and the minimal RMSD between the ring in question and any Mogul-identified rings is also greater than 60 degrees, then that ring is considered an outlier. The outliers are highlighted in purple. The color gray indicates Mogul did not find sufficient equivalents in the CSD to analyse the geometry.





## 5.7 Other polymers [i](#)

There are no such residues in this entry.

## 5.8 Polymer linkage issues [i](#)

There are no chain breaks in this entry.

## 6 Fit of model and data

### 6.1 Protein, DNA and RNA chains

In the following table, the column labelled ‘#RSRZ > 2’ contains the number (and percentage) of RSRZ outliers, followed by percent RSRZ outliers for the chain as percentile scores relative to all X-ray entries and entries of similar resolution. The OWAB column contains the minimum, median, 95<sup>th</sup> percentile and maximum values of the occupancy-weighted average B-factor per residue. The column labelled ‘Q < 0.9’ lists the number of (and percentage) of residues with an average occupancy less than 0.9.

Mol	Chain	Analysed	<RSRZ>	#RSRZ>2	OWAB(Å <sup>2</sup> )	Q<0.9
1	A	305/331 (92%)	-0.16	8 (2%) 56 53	4, 16, 31, 45	0
1	B	312/331 (94%)	-0.12	15 (4%) 30 29	5, 15, 31, 43	0
All	All	617/662 (93%)	-0.14	23 (3%) 41 39	4, 15, 31, 45	0

All (23) RSRZ outliers are listed below:

Mol	Chain	Res	Type	RSRZ
1	A	152	ALA	5.6
1	B	221	GLN	5.0
1	B	153	PRO	4.6
1	B	149	SER	4.6
1	A	148	GLY	4.3
1	A	149	SER	4.3
1	B	278	ALA	3.5
1	B	222	ARG	3.4
1	A	153	PRO	3.3
1	B	150	SER	3.2
1	B	277	ASN	3.0
1	B	148	GLY	3.0
1	B	220	ARG	2.8
1	A	280	PRO	2.6
1	A	46	MET	2.6
1	A	150	SER	2.6
1	B	154	PRO	2.4
1	B	109	GLN	2.2
1	B	374	GLU	2.2
1	B	46	MET	2.2
1	A	68	LEU	2.2
1	B	112	ILE	2.1
1	B	218	ALA	2.0

## 6.2 Non-standard residues in protein, DNA, RNA chains [i](#)

There are no non-standard protein/DNA/RNA residues in this entry.

## 6.3 Carbohydrates [i](#)

There are no monosaccharides in this entry.

## 6.4 Ligands [i](#)

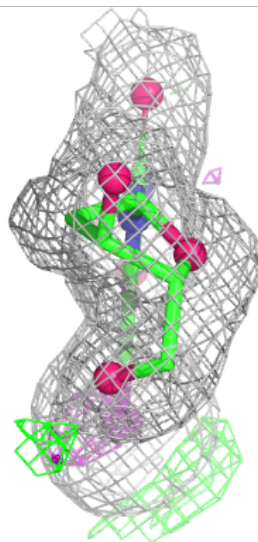
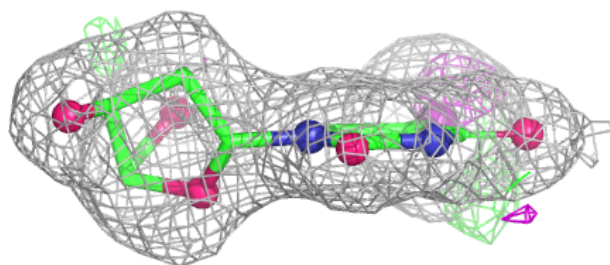
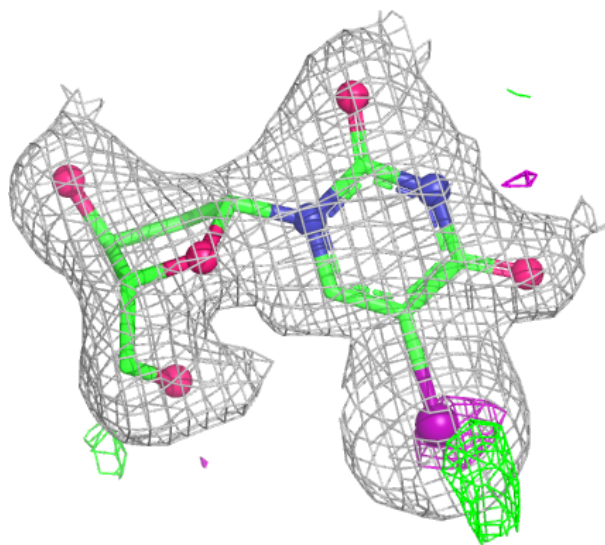
In the following table, the Atoms column lists the number of modelled atoms in the group and the number defined in the chemical component dictionary. The B-factors column lists the minimum, median, 95<sup>th</sup> percentile and maximum values of B factors of atoms in the group. The column labelled 'Q< 0.9' lists the number of atoms with occupancy less than 0.9.

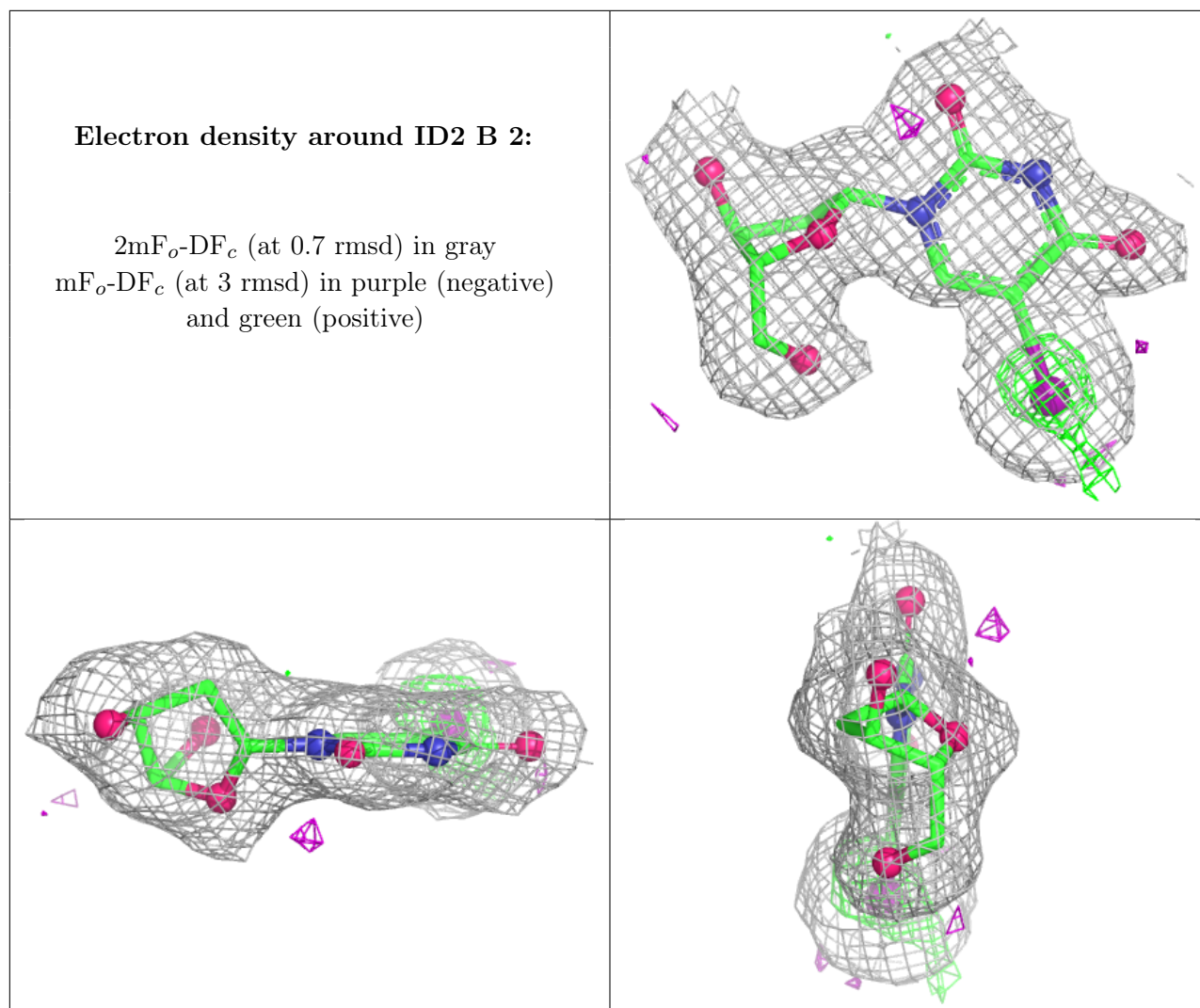
Mol	Type	Chain	Res	Atoms	RSCC	RSR	B-factors( $\text{\AA}^2$ )	Q<0.9
2	SO4	A	3	5/5	0.97	0.09	21,22,24,26	0
2	SO4	B	4	5/5	0.98	0.08	12,13,15,17	0
3	ID2	A	1	17/17	0.99	0.07	5,11,13,15	0
3	ID2	B	2	17/17	0.99	0.09	2,5,15,21	0

The following is a graphical depiction of the model fit to experimental electron density of all instances of the Ligand of Interest. In addition, ligands with molecular weight > 250 and outliers as shown on the geometry validation Tables will also be included. Each fit is shown from different orientation to approximate a three-dimensional view.

**Electron density around ID2 A 1:**

$2mF_o-DF_c$  (at 0.7 rmsd) in gray  
 $mF_o-DF_c$  (at 3 rmsd) in purple (negative)  
and green (positive)





## 6.5 Other polymers [i](#)

There are no such residues in this entry.