



Full wwPDB X-ray Structure Validation Report ⓘ

Dec 2, 2024 – 09:32 AM EST

PDB ID : 1GX1
Title : Structure of 2C-Methyl-D-erythritol-2,4-cyclodiphosphate Synthase
Authors : Kemp, L.E.; Bond, C.S.; Hunter, W.N.
Deposited on : 2002-03-26
Resolution : 1.80 Å(reported)

This is a Full wwPDB X-ray Structure Validation Report for a publicly released PDB entry.

We welcome your comments at validation@mail.wwpdb.org

A user guide is available at

<https://www.wwpdb.org/validation/2017/XrayValidationReportHelp>

with specific help available everywhere you see the ⓘ symbol.

The types of validation reports are described at

<http://www.wwpdb.org/validation/2017/FAQs#types>.

The following versions of software and data (see [references ⓘ](#)) were used in the production of this report:

MolProbity : 4.02b-467
Mogul : 2022.3.0, CSD as543be (2022)
Xtriage (Phenix) : 1.21
EDS : 3.0
buster-report : 1.1.7 (2018)
Percentile statistics : 20231227.v01 (using entries in the PDB archive December 27th 2023)
CCP4 : 9.0.004 (Gargrove)
Density-Fitness : 1.0.11
Ideal geometry (proteins) : Engh & Huber (2001)
Ideal geometry (DNA, RNA) : Parkinson et al. (1996)
Validation Pipeline (wwPDB-VP) : 2.40

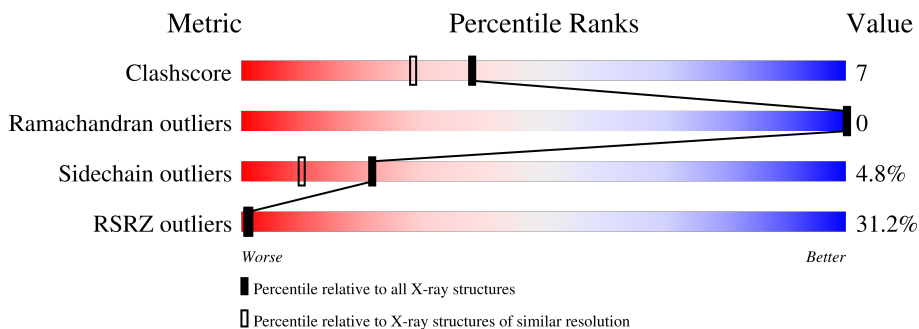
1 Overall quality at a glance

The following experimental techniques were used to determine the structure:

X-RAY DIFFRACTION

The reported resolution of this entry is 1.80 Å.

Percentile scores (ranging between 0-100) for global validation metrics of the entry are shown in the following graphic. The table shows the number of entries on which the scores are based.



Metric	Whole archive (#Entries)	Similar resolution (#Entries, resolution range(Å))
Clashscore	180529	8162 (1.80-1.80)
Ramachandran outliers	177936	8077 (1.80-1.80)
Sidechain outliers	177891	8076 (1.80-1.80)
RSRZ outliers	164620	7108 (1.80-1.80)

The table below summarises the geometric issues observed across the polymeric chains and their fit to the electron density. The red, orange, yellow and green segments of the lower bar indicate the fraction of residues that contain outliers for ≥ 3 , 2, 1 and 0 types of geometric quality criteria respectively. A grey segment represents the fraction of residues that are not modelled. The numeric value for each fraction is indicated below the corresponding segment, with a dot representing fractions $\leq 5\%$

Mol	Chain	Length	Quality of chain
1	A	160	 29% 79% 17% ..
1	B	160	 32% 84% 12% ..
1	C	160	 29% 76% 19% ..

2 Entry composition

There are 6 unique types of molecules in this entry. The entry contains 3910 atoms, of which 0 are hydrogens and 0 are deuteriums.

In the tables below, the ZeroOcc column contains the number of atoms modelled with zero occupancy, the AltConf column contains the number of residues with at least one atom in alternate conformation and the Trace column contains the number of residues modelled with at most 2 atoms.

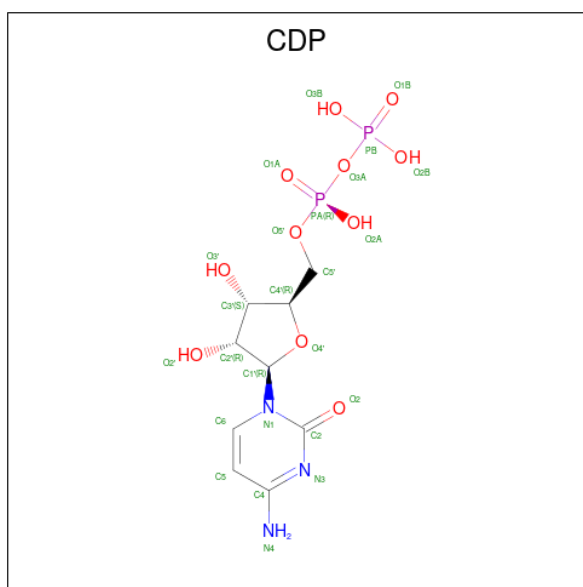
- Molecule 1 is a protein called 2-C-METHYL-D-ERYTHRITOL 2,4-CYCLODIPHOSPHATE SYNTHASE.

Mol	Chain	Residues	Atoms						ZeroOcc	AltConf	Trace
			Total	C	N	O	S	Se			
1	A	157	1175	746	207	216	2	4	30	0	0
1	B	157	1175	746	207	216	2	4	25	0	0
1	C	157	1175	746	207	216	2	4	29	0	0

- Molecule 2 is ZINC ION (three-letter code: ZN) (formula: Zn).

Mol	Chain	Residues	Atoms		ZeroOcc	AltConf
2	A	1	Total	Zn	0	0
			1	1		
2	B	1	Total	Zn	0	0
			1	1		
2	C	1	Total	Zn	0	0
			1	1		

- Molecule 3 is CYTIDINE-5'-DIPHOSPHATE (three-letter code: CDP) (formula: C₉H₁₅N₃O₁₁P₂).



Mol	Chain	Residues	Atoms					ZeroOcc	AltConf
			Total	C	N	O	P		
3	A	1	25	9	3	11	2	0	0
3	B	1	25	9	3	11	2	0	0
3	B	1	25	9	3	11	2	0	0

- Molecule 4 is MANGANESE (II) ION (three-letter code: MN) (formula: Mn).

Mol	Chain	Residues	Atoms		ZeroOcc	AltConf
			Total	Mn		
4	A	1	1	1	0	0
4	B	2	2	2	0	0

- Molecule 5 is SULFATE ION (three-letter code: SO4) (formula: O₄S).



Mol	Chain	Residues	Atoms			ZeroOcc	AltConf
5	B	1	Total	O	S	0	0
			5	4	1		

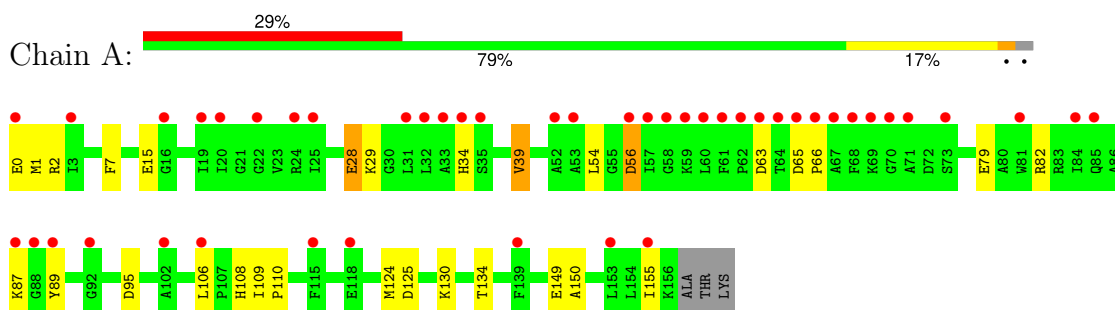
- Molecule 6 is water.

Mol	Chain	Residues	Atoms		ZeroOcc	AltConf
6	A	92	Total	O	0	0
			92	92		
6	B	105	Total	O	0	0
			105	105		
6	C	102	Total	O	0	0
			102	102		

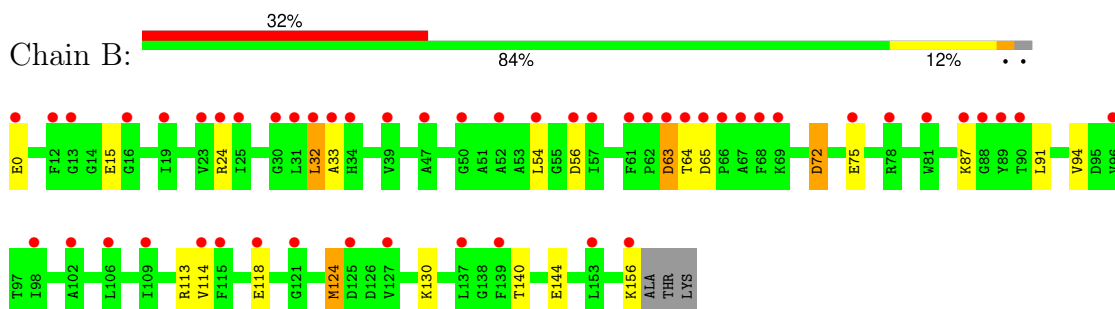
3 Residue-property plots [i](#)

These plots are drawn for all protein, RNA, DNA and oligosaccharide chains in the entry. The first graphic for a chain summarises the proportions of the various outlier classes displayed in the second graphic. The second graphic shows the sequence view annotated by issues in geometry. Residues are color-coded according to the number of geometric quality criteria for which they contain at least one outlier: green = 0, yellow = 1, orange = 2 and red = 3 or more. Stretches of 2 or more consecutive residues without any outlier are shown as a green connector. Residues present in the sample, but not in the model, are shown in grey.

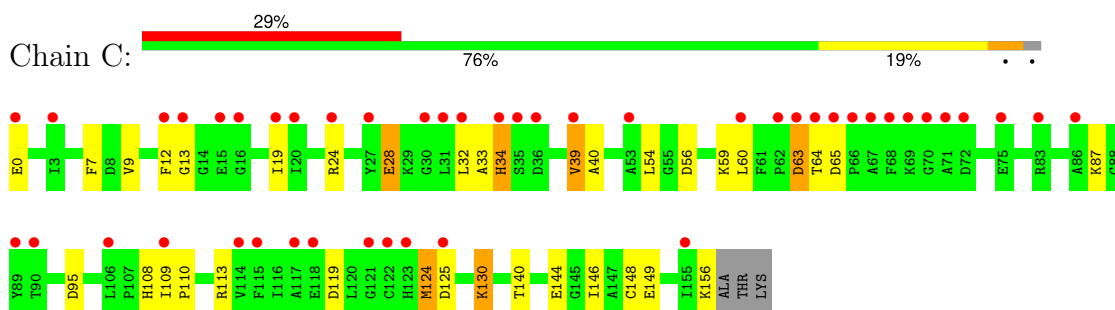
- Molecule 1: 2-C-METHYL-D-ERYTHRITOL 2,4-CYCLODIPHOSPHATE SYNTHASE



- Molecule 1: 2-C-METHYL-D-ERYTHRITOL 2,4-CYCLODIPHOSPHATE SYNTHASE



- Molecule 1: 2-C-METHYL-D-ERYTHRITOL 2,4-CYCLODIPHOSPHATE SYNTHASE



4 Data and refinement statistics

Property	Value	Source
Space group	P 21 21 2	Depositor
Cell constants a, b, c, α , β , γ	54.20Å 114.85Å 87.75Å 90.00° 90.00° 90.00°	Depositor
Resolution (Å)	20.00 – 1.80 20.00 – 1.80	Depositor EDS
% Data completeness (in resolution range)	97.3 (20.00-1.80) 93.6 (20.00-1.80)	Depositor EDS
R_{merge}	0.06	Depositor
R_{sym}	(Not available)	Depositor
$\langle I/\sigma(I) \rangle$ ¹	1.86 (at 1.80Å)	Xtrriage
Refinement program	REFMAC	Depositor
R, R_{free}	0.184 , 0.216 0.188 , (Not available)	Depositor DCC
R_{free} test set	No test flags present.	wwPDB-VP
Wilson B-factor (Å ²)	22.3	Xtrriage
Anisotropy	0.431	Xtrriage
Bulk solvent k_{sol} (e/Å ³), B_{sol} (Å ²)	0.37 , 44.2	EDS
L-test for twinning ²	$\langle L \rangle = 0.49$, $\langle L^2 \rangle = 0.32$	Xtrriage
Estimated twinning fraction	No twinning to report.	Xtrriage
F_o, F_c correlation	0.91	EDS
Total number of atoms	3910	wwPDB-VP
Average B, all atoms (Å ²)	29.0	wwPDB-VP

Xtrriage's analysis on translational NCS is as follows: *The largest off-origin peak in the Patterson function is 5.42% of the height of the origin peak. No significant pseudotranslation is detected.*

¹Intensities estimated from amplitudes.

²Theoretical values of $\langle |L| \rangle$, $\langle L^2 \rangle$ for acentric reflections are 0.5, 0.333 respectively for untwinned datasets, and 0.375, 0.2 for perfectly twinned datasets.

5 Model quality i

5.1 Standard geometry i

Bond lengths and bond angles in the following residue types are not validated in this section: CDP, MN, ZN, SO4

The Z score for a bond length (or angle) is the number of standard deviations the observed value is removed from the expected value. A bond length (or angle) with $|Z| > 5$ is considered an outlier worth inspection. RMSZ is the root-mean-square of all Z scores of the bond lengths (or angles).

Mol	Chain	Bond lengths		Bond angles	
		RMSZ	# Z >5	RMSZ	# Z >5
1	A	1.06	5/1193 (0.4%)	1.14	8/1606 (0.5%)
1	B	0.81	1/1193 (0.1%)	0.96	4/1606 (0.2%)
1	C	0.95	2/1193 (0.2%)	1.10	12/1606 (0.7%)
All	All	0.95	8/3579 (0.2%)	1.07	24/4818 (0.5%)

All (8) bond length outliers are listed below:

Mol	Chain	Res	Type	Atoms	Z	Observed(Å)	Ideal(Å)
1	A	15	GLU	CB-CG	-16.54	1.20	1.52
1	C	156	LYS	CB-CG	-16.33	1.08	1.52
1	A	28	GLU	CB-CG	-10.84	1.31	1.52
1	A	29	LYS	CD-CE	9.42	1.74	1.51
1	C	28	GLU	CB-CG	7.56	1.66	1.52
1	B	15	GLU	CB-CG	6.76	1.65	1.52
1	A	63	ASP	CA-CB	5.89	1.67	1.53
1	A	150	ALA	CA-CB	5.47	1.64	1.52

All (24) bond angle outliers are listed below:

Mol	Chain	Res	Type	Atoms	Z	Observed(°)	Ideal(°)
1	A	63	ASP	N-CA-CB	-13.92	85.54	110.60
1	A	34	HIS	CA-CB-CG	13.00	135.71	113.60
1	A	28	GLU	CA-CB-CG	12.56	141.04	113.40
1	C	63	ASP	N-CA-CB	-9.01	94.38	110.60
1	C	156	LYS	CA-CB-CG	8.02	131.04	113.40
1	A	15	GLU	CA-CB-CG	7.31	129.49	113.40
1	C	63	ASP	CB-CG-OD2	6.84	124.45	118.30
1	C	125	ASP	CB-CG-OD2	6.82	124.44	118.30
1	C	39	VAL	CB-CA-C	-6.34	99.35	111.40
1	B	63	ASP	CB-CG-OD2	6.29	123.96	118.30

Continued on next page...

Continued from previous page...

Mol	Chain	Res	Type	Atoms	Z	Observed(°)	Ideal(°)
1	A	39	VAL	CB-CA-C	-6.16	99.69	111.40
1	A	29	LYS	CG-CD-CE	-6.01	93.86	111.90
1	C	0	GLU	CB-CG-CD	5.93	130.22	114.20
1	B	72	ASP	CB-CG-OD2	5.87	123.58	118.30
1	B	63	ASP	N-CA-CB	-5.85	100.07	110.60
1	C	34	HIS	N-CA-CB	5.84	121.11	110.60
1	B	65	ASP	CB-CG-OD2	5.59	123.33	118.30
1	C	119	ASP	CB-CG-OD2	5.55	123.30	118.30
1	A	125	ASP	CB-CG-OD2	5.37	123.13	118.30
1	C	39	VAL	CG1-CB-CG2	5.35	119.46	110.90
1	C	65	ASP	CB-CG-OD2	5.33	123.10	118.30
1	C	95	ASP	CB-CG-OD2	5.30	123.07	118.30
1	C	56	ASP	CB-CG-OD2	5.21	122.99	118.30
1	A	56	ASP	CB-CG-OD2	5.16	122.94	118.30

There are no chirality outliers.

There are no planarity outliers.

5.2 Too-close contacts [i](#)

In the following table, the Non-H and H(model) columns list the number of non-hydrogen atoms and hydrogen atoms in the chain respectively. The H(added) column lists the number of hydrogen atoms added and optimized by MolProbity. The Clashes column lists the number of clashes within the asymmetric unit, whereas Symm-Clashes lists symmetry-related clashes.

Mol	Chain	Non-H	H(model)	H(added)	Clashes	Symm-Clashes
1	A	1175	0	1188	17	0
1	B	1175	0	1188	16	0
1	C	1175	0	1188	19	0
2	A	1	0	0	0	0
2	B	1	0	0	0	0
2	C	1	0	0	0	0
3	A	25	0	12	0	0
3	B	50	0	24	0	0
4	A	1	0	0	0	0
4	B	2	0	0	0	0
5	B	5	0	0	0	0
6	A	92	0	0	2	0
6	B	105	0	0	2	1
6	C	102	0	0	9	1
All	All	3910	0	3600	48	2

The all-atom clashscore is defined as the number of clashes found per 1000 atoms (including hydrogen atoms). The all-atom clashscore for this structure is 7.

All (48) close contacts within the same asymmetric unit are listed below, sorted by their clash magnitude.

Atom-1	Atom-2	Interatomic distance (Å)	Clash overlap (Å)
1:C:59:LYS:NZ	6:C:2045:HOH:O	2.04	0.90
1:A:1:MSE:HE1	6:C:2002:HOH:O	1.76	0.85
1:B:144:GLU:OE2	6:B:2096:HOH:O	1.96	0.82
1:B:140:THR:OG1	6:B:2090:HOH:O	2.00	0.78
1:B:54:LEU:HD21	1:B:87:LYS:HD2	1.66	0.78
1:C:140:THR:OG1	6:C:2096:HOH:O	2.03	0.77
1:A:1:MSE:CE	6:C:2002:HOH:O	2.33	0.76
1:B:32:LEU:HD13	6:C:2040:HOH:O	1.89	0.72
1:C:144:GLU:OE2	6:C:2102:HOH:O	2.07	0.71
1:B:0:GLU:HG2	1:B:156:LYS:HB3	1.84	0.59
1:C:113:ARG:HB2	1:C:124:MSE:HE2	1.85	0.59
1:B:114:VAL:O	1:B:118:GLU:HG3	2.03	0.58
1:A:54:LEU:HD21	1:A:87:LYS:HD2	1.86	0.58
1:C:54:LEU:HD21	1:C:87:LYS:HD2	1.84	0.58
1:C:108:HIS:HE1	6:C:2068:HOH:O	1.87	0.57
1:A:79:GLU:OE2	1:A:82:ARG:NH2	2.36	0.56
1:B:113:ARG:HB2	1:B:124:MSE:HE2	1.89	0.55
1:B:32:LEU:O	1:B:33:ALA:HB2	2.05	0.55
1:B:113:ARG:HB2	1:B:124:MSE:CE	2.38	0.54
1:A:108:HIS:HE1	6:A:2058:HOH:O	1.90	0.53
1:A:108:HIS:HD2	6:A:2009:HOH:O	1.93	0.52
1:C:32:LEU:O	1:C:33:ALA:HB2	2.11	0.51
1:A:7:PHE:HD1	1:A:149:GLU:HG2	1.76	0.51
1:C:113:ARG:HB2	1:C:124:MSE:CE	2.43	0.48
1:C:144:GLU:CD	6:C:2102:HOH:O	2.50	0.48
1:B:32:LEU:HB3	6:C:2040:HOH:O	2.13	0.48
1:A:1:MSE:HE3	1:A:155:ILE:HG12	1.96	0.47
1:A:56:ASP:HB3	1:B:130:LYS:HB2	1.99	0.45
1:A:65:ASP:OD1	1:A:65:ASP:C	2.55	0.45
1:A:2:ARG:HD3	1:A:89:TYR:CE1	2.51	0.44
1:B:56:ASP:HB3	1:C:130:LYS:HB2	1.98	0.44
1:A:134:THR:HA	1:C:9:VAL:HB	2.00	0.44
1:C:54:LEU:HD23	1:C:54:LEU:HA	1.81	0.44
1:C:109:ILE:N	1:C:110:PRO:CD	2.81	0.44
1:A:109:ILE:N	1:A:110:PRO:CD	2.81	0.43
1:C:19:ILE:HG12	1:C:24:ARG:HG2	2.00	0.43
1:A:56:ASP:HB3	1:B:130:LYS:CB	2.49	0.42

Continued on next page...

Continued from previous page...

Atom-1	Atom-2	Interatomic distance (Å)	Clash overlap (Å)
1:B:72:ASP:OD1	1:B:75:GLU:HG3	2.19	0.42
1:C:12:PHE:CZ	1:C:146:ILE:HG13	2.55	0.42
1:B:113:ARG:CB	1:B:124:MSE:HE2	2.48	0.42
1:C:7:PHE:HD1	1:C:149:GLU:HG2	1.85	0.42
1:C:13:GLY:HA3	1:C:32:LEU:HD21	2.00	0.42
1:C:40:ALA:HA	1:C:148:CYS:SG	2.59	0.42
1:A:95:ASP:OD1	1:A:130:LYS:NZ	2.51	0.41
1:B:91:LEU:HD11	1:B:94:VAL:HG13	2.02	0.41
1:C:13:GLY:HA3	1:C:32:LEU:CD2	2.51	0.40
1:A:65:ASP:HA	1:A:66:PRO:HD3	1.77	0.40
1:A:106:LEU:HD12	1:A:106:LEU:O	2.22	0.40

All (2) symmetry-related close contacts are listed below. The label for Atom-2 includes the symmetry operator and encoded unit-cell translations to be applied.

Atom-1	Atom-2	Interatomic distance (Å)	Clash overlap (Å)
6:B:2021:HOH:O	6:B:2031:HOH:O[4_456]	0.81	1.39
6:C:2102:HOH:O	6:C:2102:HOH:O[2_555]	1.65	0.55

5.3 Torsion angles [i](#)

5.3.1 Protein backbone [i](#)

In the following table, the Percentiles column shows the percent Ramachandran outliers of the chain as a percentile score with respect to all X-ray entries followed by that with respect to entries of similar resolution.

The Analysed column shows the number of residues for which the backbone conformation was analysed, and the total number of residues.

Mol	Chain	Analysed	Favoured	Allowed	Outliers	Percentiles	
1	A	155/160 (97%)	153 (99%)	2 (1%)	0	100	100
1	B	155/160 (97%)	152 (98%)	3 (2%)	0	100	100
1	C	155/160 (97%)	151 (97%)	4 (3%)	0	100	100
All	All	465/480 (97%)	456 (98%)	9 (2%)	0	100	100

There are no Ramachandran outliers to report.

5.3.2 Protein sidechains [i](#)

In the following table, the Percentiles column shows the percent sidechain outliers of the chain as a percentile score with respect to all X-ray entries followed by that with respect to entries of similar resolution.

The Analysed column shows the number of residues for which the sidechain conformation was analysed, and the total number of residues.

Mol	Chain	Analysed	Rotameric	Outliers	Percentiles	
1	A	118/116 (102%)	114 (97%)	4 (3%)	32	20
1	B	118/116 (102%)	113 (96%)	5 (4%)	25	13
1	C	118/116 (102%)	110 (93%)	8 (7%)	13	4
All	All	354/348 (102%)	337 (95%)	17 (5%)	21	10

All (17) residues with a non-rotameric sidechain are listed below:

Mol	Chain	Res	Type
1	A	0	GLU
1	A	28	GLU
1	A	39	VAL
1	A	124	MSE
1	B	24	ARG
1	B	32	LEU
1	B	63	ASP
1	B	64	THR
1	B	124	MSE
1	C	28	GLU
1	C	34	HIS
1	C	39	VAL
1	C	60	LEU
1	C	63	ASP
1	C	64	THR
1	C	124	MSE
1	C	130	LYS

Sometimes sidechains can be flipped to improve hydrogen bonding and reduce clashes. All (3) such sidechains are listed below:

Mol	Chain	Res	Type
1	A	108	HIS
1	B	108	HIS
1	C	108	HIS

5.3.3 RNA [i](#)

There are no RNA molecules in this entry.

5.4 Non-standard residues in protein, DNA, RNA chains [i](#)

There are no non-standard protein/DNA/RNA residues in this entry.

5.5 Carbohydrates [i](#)

There are no oligosaccharides in this entry.

5.6 Ligand geometry [i](#)

Of 10 ligands modelled in this entry, 6 are monoatomic - leaving 4 for Mogul analysis.

In the following table, the Counts columns list the number of bonds (or angles) for which Mogul statistics could be retrieved, the number of bonds (or angles) that are observed in the model and the number of bonds (or angles) that are defined in the Chemical Component Dictionary. The Link column lists molecule types, if any, to which the group is linked. The Z score for a bond length (or angle) is the number of standard deviations the observed value is removed from the expected value. A bond length (or angle) with $|Z| > 2$ is considered an outlier worth inspection. RMSZ is the root-mean-square of all Z scores of the bond lengths (or angles).

Mol	Type	Chain	Res	Link	Bond lengths			Bond angles		
					Counts	RMSZ	# Z > 2	Counts	RMSZ	# Z > 2
3	CDP	A	1158	2,4	25,26,26	0.90	1 (4%)	38,40,40	1.51	6 (15%)
3	CDP	B	1157	2,4	25,26,26	1.24	3 (12%)	38,40,40	1.21	2 (5%)
5	SO4	B	1162	-	4,4,4	0.47	0	6,6,6	0.71	0
3	CDP	B	1160	2,4	25,26,26	1.11	2 (8%)	38,40,40	1.49	5 (13%)

In the following table, the Chirals column lists the number of chiral outliers, the number of chiral centers analysed, the number of these observed in the model and the number defined in the Chemical Component Dictionary. Similar counts are reported in the Torsion and Rings columns. '-' means no outliers of that kind were identified.

Mol	Type	Chain	Res	Link	Chirals	Torsions	Rings
3	CDP	A	1158	2,4	-	2/16/32/32	0/2/2/2
3	CDP	B	1157	2,4	-	3/16/32/32	0/2/2/2
3	CDP	B	1160	2,4	-	2/16/32/32	0/2/2/2

All (6) bond length outliers are listed below:

Mol	Chain	Res	Type	Atoms	Z	Observed(Å)	Ideal(Å)
3	B	1157	CDP	PA-O3A	3.40	1.63	1.59
3	B	1157	CDP	C6-C5	2.72	1.41	1.35
3	A	1158	CDP	C6-C5	2.38	1.40	1.35
3	B	1160	CDP	PA-O3A	2.36	1.62	1.59
3	B	1160	CDP	C4-N3	2.27	1.39	1.34
3	B	1157	CDP	PB-O2B	2.20	1.63	1.54

All (13) bond angle outliers are listed below:

Mol	Chain	Res	Type	Atoms	Z	Observed(°)	Ideal(°)
3	B	1160	CDP	O2B-PB-O3A	5.37	122.64	104.64
3	A	1158	CDP	O2B-PB-O3A	4.29	119.01	104.64
3	A	1158	CDP	O2A-PA-O3A	4.21	118.64	107.27
3	B	1160	CDP	O2A-PA-O3A	3.88	117.77	107.27
3	B	1157	CDP	O2B-PB-O3A	3.73	117.15	104.64
3	B	1160	CDP	O3B-PB-O1B	-2.82	99.86	110.83
3	A	1158	CDP	O2-C2-N3	-2.73	118.03	122.33
3	A	1158	CDP	O3B-PB-O1B	-2.64	100.56	110.83
3	B	1160	CDP	O5'-PA-O1A	-2.17	100.31	108.94
3	B	1157	CDP	O2'-C2'-C3'	-2.17	104.86	111.82
3	A	1158	CDP	O2B-PB-O1B	2.11	119.06	110.83
3	A	1158	CDP	C5-C4-N4	2.08	124.28	120.63
3	B	1160	CDP	C2'-C1'-N1	2.02	118.86	113.25

There are no chirality outliers.

All (7) torsion outliers are listed below:

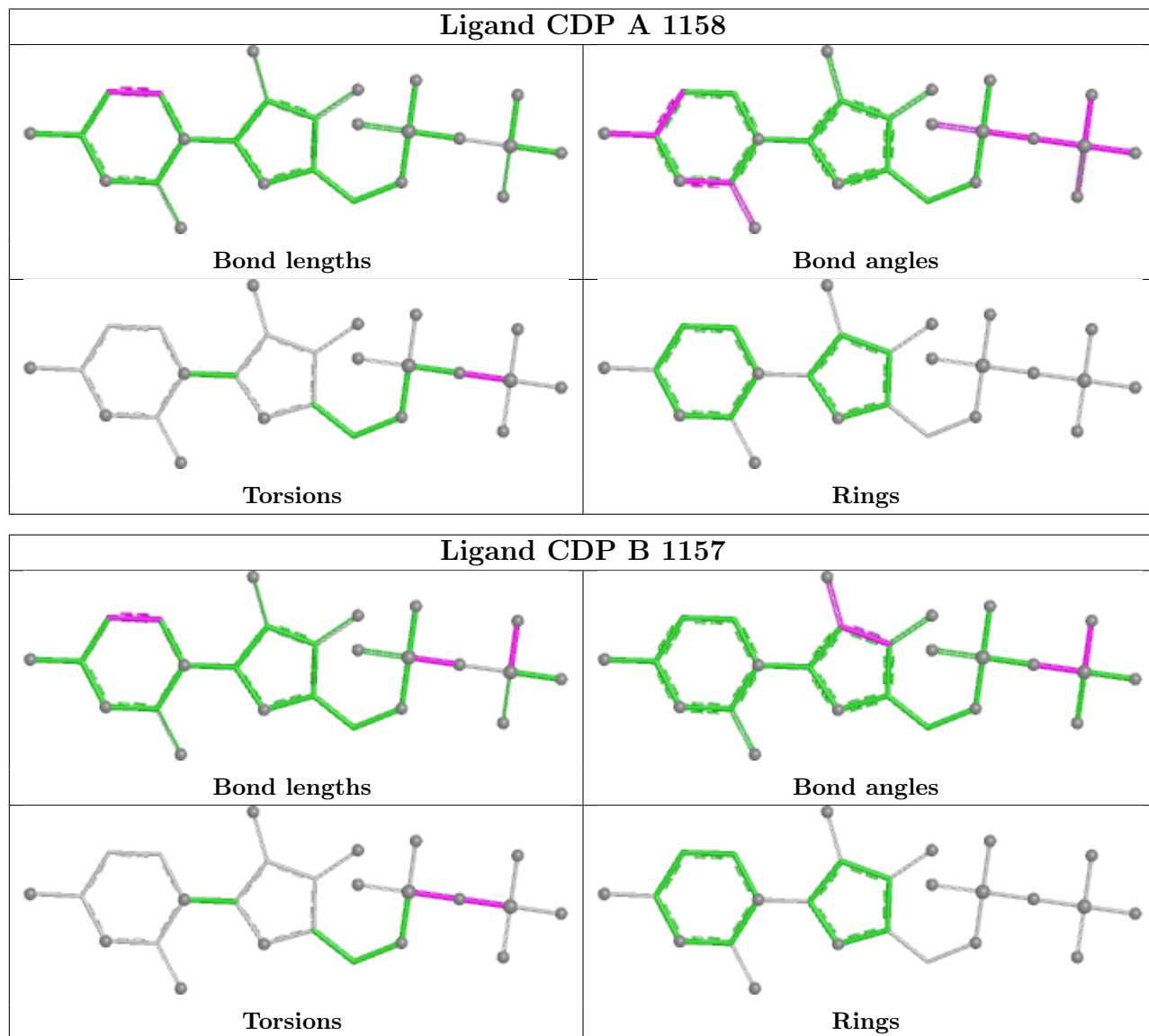
Mol	Chain	Res	Type	Atoms
3	B	1157	CDP	PA-O3A-PB-O2B
3	B	1157	CDP	PA-O3A-PB-O1B
3	A	1158	CDP	PA-O3A-PB-O3B
3	A	1158	CDP	PA-O3A-PB-O2B
3	B	1160	CDP	PA-O3A-PB-O3B
3	B	1160	CDP	PA-O3A-PB-O2B
3	B	1157	CDP	PB-O3A-PA-O1A

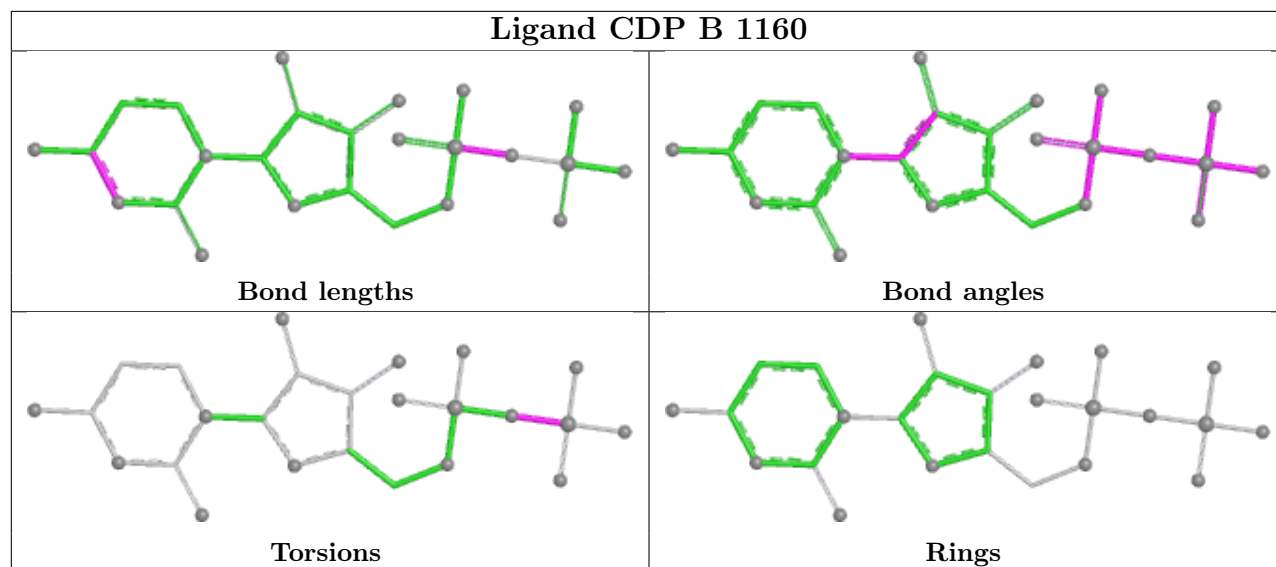
There are no ring outliers.

No monomer is involved in short contacts.

The following is a two-dimensional graphical depiction of Mogul quality analysis of bond lengths, bond angles, torsion angles, and ring geometry for all instances of the Ligand of Interest. In addition, ligands with molecular weight > 250 and outliers as shown on the validation Tables will also be included. For torsion angles, if less than 5% of the Mogul distribution of torsion angles is

within 10 degrees of the torsion angle in question, then that torsion angle is considered an outlier. Any bond that is central to one or more torsion angles identified as an outlier by Mogul will be highlighted in the graph. For rings, the root-mean-square deviation (RMSD) between the ring in question and similar rings identified by Mogul is calculated over all ring torsion angles. If the average RMSD is greater than 60 degrees and the minimal RMSD between the ring in question and any Mogul-identified rings is also greater than 60 degrees, then that ring is considered an outlier. The outliers are highlighted in purple. The color gray indicates Mogul did not find sufficient equivalents in the CSD to analyse the geometry.





5.7 Other polymers [i](#)

There are no such residues in this entry.

5.8 Polymer linkage issues [i](#)

There are no chain breaks in this entry.

6 Fit of model and data

6.1 Protein, DNA and RNA chains

Warning: The R factor obtained from EDS is 0.2627, which does not match the depositor's R factor of 0.184. Please interpret the results in this section carefully.

In the following table, the column labelled '#RSRZ > 2' contains the number (and percentage) of RSRZ outliers, followed by percent RSRZ outliers for the chain as percentile scores relative to all X-ray entries and entries of similar resolution. The OWAB column contains the minimum, median, 95th percentile and maximum values of the occupancy-weighted average B-factor per residue. The column labelled 'Q < 0.9' lists the number of (and percentage) of residues with an average occupancy less than 0.9.

Mol	Chain	Analysed	<RSRZ>	#RSRZ>2	OWAB(Å ²)	Q<0.9
1	A	153/160 (95%)	1.67	46 (30%) 1 1	17, 25, 39, 51	8 (5%)
1	B	153/160 (95%)	1.71	51 (33%) 1 1	18, 26, 40, 49	6 (3%)
1	C	153/160 (95%)	1.61	46 (30%) 1 1	18, 25, 39, 47	7 (4%)
All	All	459/480 (95%)	1.66	143 (31%) 1 1	17, 26, 40, 51	21 (4%)

All (143) RSRZ outliers are listed below:

Mol	Chain	Res	Type	RSRZ
1	B	64	THR	7.3
1	C	64	THR	6.4
1	B	32	LEU	5.8
1	A	32	LEU	5.6
1	C	31	LEU	5.6
1	A	68	PHE	5.2
1	A	65	ASP	5.1
1	C	32	LEU	5.0
1	B	156	LYS	4.8
1	A	64	THR	4.8
1	B	62	PRO	4.4
1	C	155	ILE	4.3
1	C	35	SER	4.1
1	B	87	LYS	4.0
1	A	66	PRO	3.9
1	B	65	ASP	3.9
1	B	68	PHE	3.9
1	B	81	TRP	3.7
1	A	34	HIS	3.7
1	A	57	ILE	3.6

Continued on next page...

Continued from previous page...

Mol	Chain	Res	Type	RSRZ
1	A	19	ILE	3.6
1	B	63	ASP	3.5
1	C	65	ASP	3.5
1	B	57	ILE	3.5
1	C	114	VAL	3.5
1	C	69	LYS	3.4
1	C	34	HIS	3.4
1	A	35	SER	3.4
1	A	61	PHE	3.3
1	C	68	PHE	3.3
1	C	39	VAL	3.3
1	C	66	PRO	3.3
1	C	27	TYR	3.3
1	C	123	HIS	3.3
1	C	70	GLY	3.3
1	A	70	GLY	3.2
1	B	50	GLY	3.2
1	A	118	GLU	3.2
1	C	24	ARG	3.2
1	A	88	GLY	3.2
1	A	89	TYR	3.1
1	A	25	ILE	3.1
1	C	20	ILE	3.1
1	B	0	GLU	3.0
1	A	67	ALA	3.0
1	C	13	GLY	3.0
1	B	24	ARG	3.0
1	A	115	PHE	3.0
1	C	12	PHE	3.0
1	B	23	VAL	3.0
1	A	24	ARG	3.0
1	A	59	LYS	3.0
1	A	56	ASP	3.0
1	A	58	GLY	3.0
1	B	33	ALA	3.0
1	C	86	ALA	3.0
1	A	31	LEU	3.0
1	B	69	LYS	3.0
1	B	66	PRO	2.9
1	B	34	HIS	2.9
1	C	109	ILE	2.9
1	C	118	GLU	2.9

Continued on next page...

Continued from previous page...

Mol	Chain	Res	Type	RSRZ
1	C	117	ALA	2.9
1	A	155	ILE	2.8
1	B	13	GLY	2.8
1	A	60	LEU	2.7
1	A	63	ASP	2.7
1	A	33	ALA	2.7
1	C	115	PHE	2.7
1	A	69	LYS	2.7
1	A	16	GLY	2.7
1	C	89	TYR	2.6
1	A	52	ALA	2.6
1	B	12	PHE	2.6
1	B	39	VAL	2.6
1	B	127	VAL	2.6
1	C	16	GLY	2.6
1	B	109	ILE	2.6
1	B	118	GLU	2.6
1	C	62	PRO	2.6
1	A	106	LEU	2.6
1	B	31	LEU	2.6
1	A	53	ALA	2.6
1	B	67	ALA	2.6
1	C	36	ASP	2.6
1	C	71	ALA	2.6
1	B	153	LEU	2.5
1	B	30	GLY	2.5
1	B	121	GLY	2.5
1	C	30	GLY	2.5
1	A	102	ALA	2.5
1	B	102	ALA	2.5
1	B	106	LEU	2.4
1	C	19	ILE	2.4
1	A	71	ALA	2.4
1	C	53	ALA	2.4
1	B	115	PHE	2.4
1	B	47	ALA	2.4
1	C	122	CYS	2.4
1	C	83	ARG	2.4
1	C	63	ASP	2.4
1	A	85	GLN	2.4
1	B	25	ILE	2.3
1	A	73	SER	2.3

Continued on next page...

Continued from previous page...

Mol	Chain	Res	Type	RSRZ
1	C	67	ALA	2.3
1	C	75	GLU	2.3
1	B	90	THR	2.3
1	B	139	PHE	2.3
1	A	3	ILE	2.3
1	C	15	GLU	2.3
1	B	56	ASP	2.3
1	B	98	ILE	2.2
1	A	87	LYS	2.2
1	A	0	GLU	2.2
1	B	54	LEU	2.2
1	A	20	ILE	2.2
1	C	3	ILE	2.2
1	B	61	PHE	2.2
1	C	60	LEU	2.2
1	B	75	GLU	2.2
1	A	84	ILE	2.2
1	B	16	GLY	2.1
1	B	52	ALA	2.1
1	B	137	LEU	2.1
1	A	62	PRO	2.1
1	B	19	ILE	2.1
1	B	89	TYR	2.1
1	B	78	ARG	2.1
1	A	92	GLY	2.1
1	B	96	VAL	2.1
1	B	114	VAL	2.1
1	C	90	THR	2.1
1	B	88	GLY	2.1
1	C	121	GLY	2.1
1	B	125	ASP	2.0
1	C	72	ASP	2.0
1	A	139	PHE	2.0
1	C	0	GLU	2.0
1	A	81	TRP	2.0
1	A	22	GLY	2.0
1	C	125	ASP	2.0
1	A	153	LEU	2.0
1	C	106	LEU	2.0

6.2 Non-standard residues in protein, DNA, RNA chains [i](#)

There are no non-standard protein/DNA/RNA residues in this entry.

6.3 Carbohydrates [i](#)

There are no monosaccharides in this entry.

6.4 Ligands [i](#)

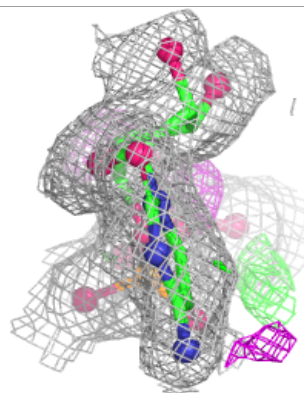
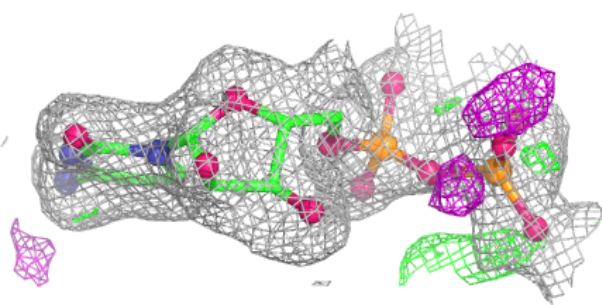
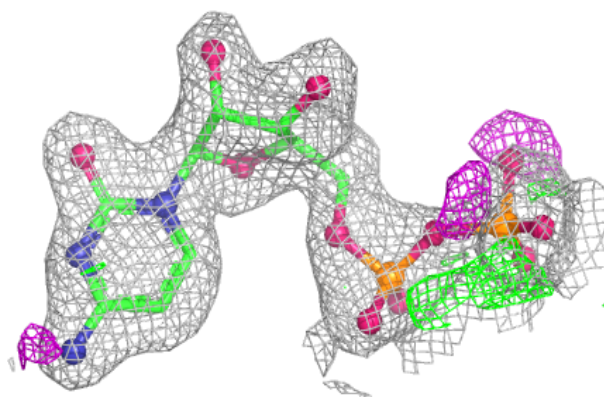
In the following table, the Atoms column lists the number of modelled atoms in the group and the number defined in the chemical component dictionary. The B-factors column lists the minimum, median, 95th percentile and maximum values of B factors of atoms in the group. The column labelled 'Q< 0.9' lists the number of atoms with occupancy less than 0.9.

Mol	Type	Chain	Res	Atoms	RSCC	RSR	B-factors(\AA^2)	Q<0.9
3	CDP	B	1160	25/25	0.84	0.14	21,29,34,37	0
3	CDP	A	1158	25/25	0.88	0.13	22,27,32,32	0
5	SO4	B	1162	5/5	0.89	0.14	28,30,31,44	0
3	CDP	B	1157	25/25	0.91	0.12	22,28,32,33	0
4	MN	A	1159	1/1	0.96	0.09	33,33,33,33	0
4	MN	B	1161	1/1	0.97	0.10	37,37,37,37	0
2	ZN	C	1157	1/1	0.98	0.04	22,22,22,22	0
4	MN	B	1158	1/1	0.99	0.03	31,31,31,31	0
2	ZN	B	1159	1/1	0.99	0.03	24,24,24,24	0
2	ZN	A	1157	1/1	0.99	0.04	23,23,23,23	0

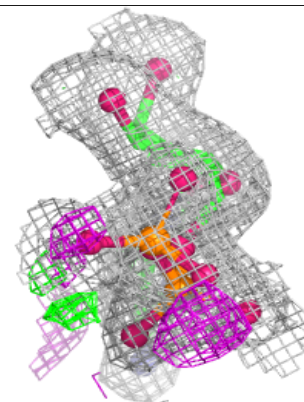
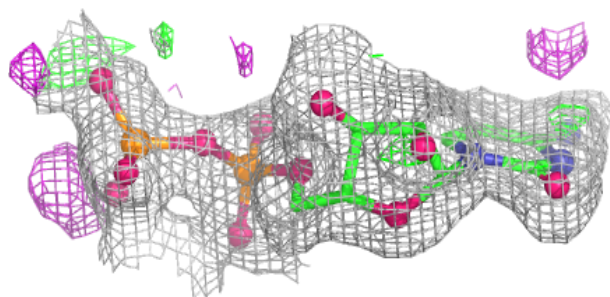
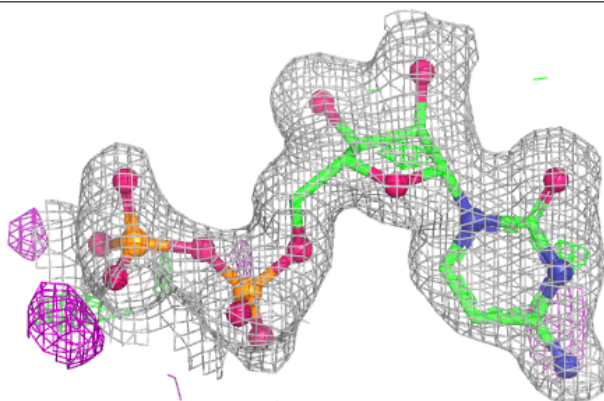
The following is a graphical depiction of the model fit to experimental electron density of all instances of the Ligand of Interest. In addition, ligands with molecular weight > 250 and outliers as shown on the geometry validation Tables will also be included. Each fit is shown from different orientation to approximate a three-dimensional view.

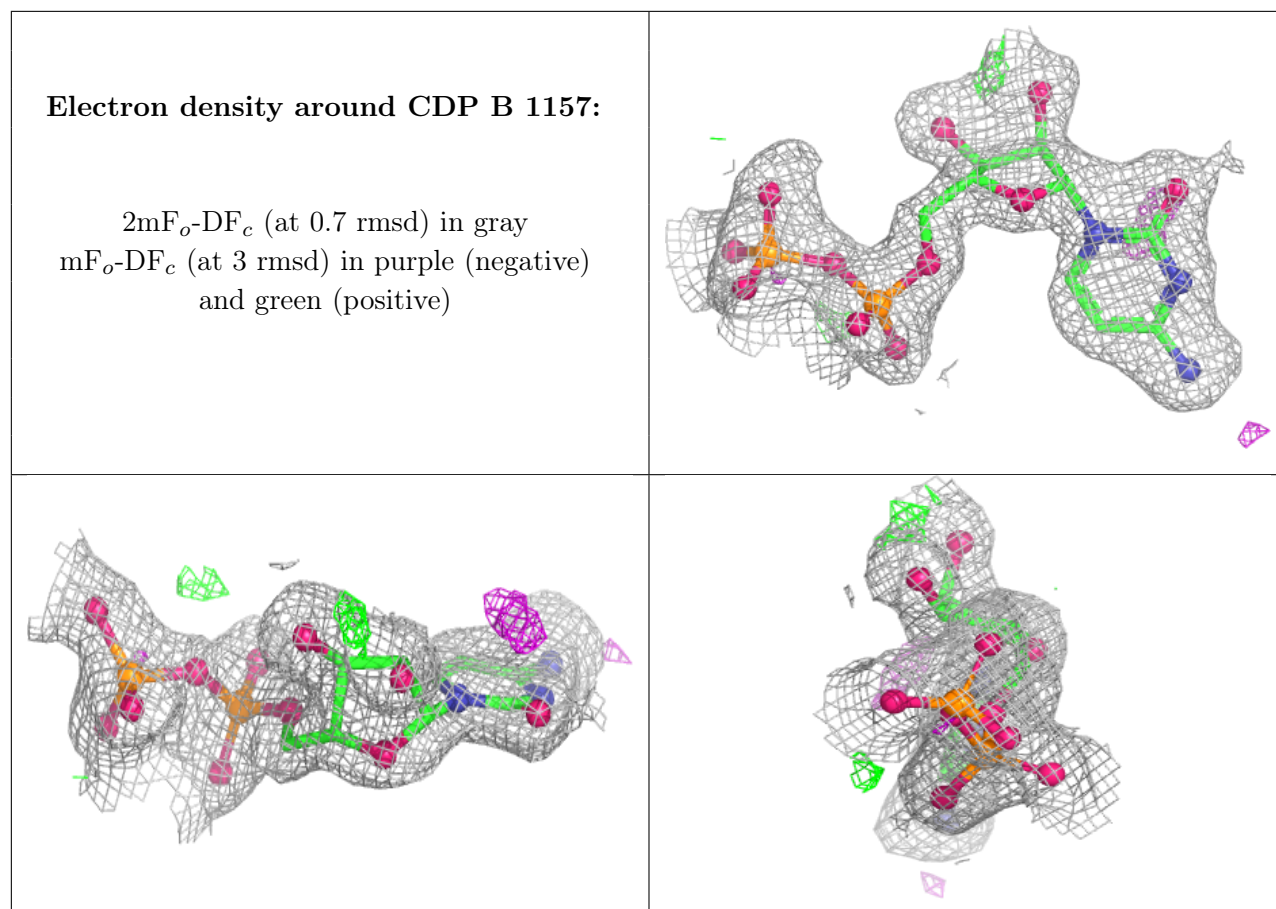
Electron density around CDP B 1160:

$2mF_o-DF_c$ (at 0.7 rmsd) in gray
 mF_o-DF_c (at 3 rmsd) in purple (negative)
and green (positive)

**Electron density around CDP A 1158:**

$2mF_o-DF_c$ (at 0.7 rmsd) in gray
 mF_o-DF_c (at 3 rmsd) in purple (negative)
and green (positive)





6.5 Other polymers [i](#)

There are no such residues in this entry.