



Full wwPDB X-ray Structure Validation Report ⓘ

Jun 11, 2024 – 10:17 PM EDT

PDB ID : 1FDQ
Title : CRYSTAL STRUCTURE OF HUMAN BRAIN FATTY ACID BINDING
PROTEIN
Authors : Balendiran, G.K.
Deposited on : 2000-07-20
Resolution : 2.10 Å (reported)

This is a Full wwPDB X-ray Structure Validation Report for a publicly released PDB entry.

We welcome your comments at validation@mail.wwpdb.org

A user guide is available at

<https://www.wwpdb.org/validation/2017/XrayValidationReportHelp>

with specific help available everywhere you see the ⓘ symbol.

The types of validation reports are described at

<http://www.wwpdb.org/validation/2017/FAQs#types>.

The following versions of software and data (see [references ⓘ](#)) were used in the production of this report:

MolProbity : 4.02b-467
Mogul : 2022.3.0, CSD as543be (2022)
Xtrriage (Phenix) : **NOT EXECUTED**
EDS : **NOT EXECUTED**
buster-report : 1.1.7 (2018)
Percentile statistics : 20191225.v01 (using entries in the PDB archive December 25th 2019)
Ideal geometry (proteins) : Engh & Huber (2001)
Ideal geometry (DNA, RNA) : Parkinson et al. (1996)
Validation Pipeline (wwPDB-VP) : 2.36.2

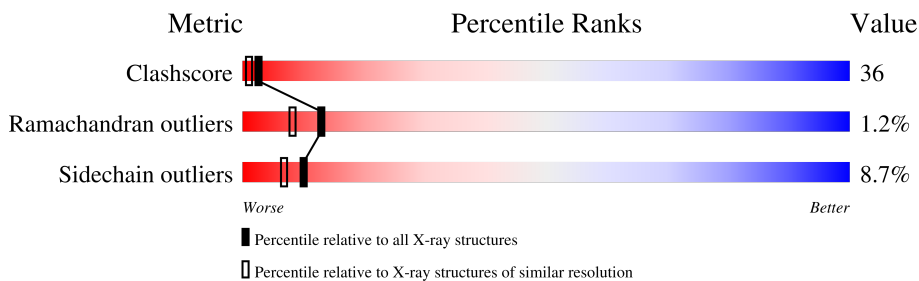
1 Overall quality at a glance

The following experimental techniques were used to determine the structure:

X-RAY DIFFRACTION

The reported resolution of this entry is 2.10 Å.



Percentile scores (ranging between 0-100) for global validation metrics of the entry are shown in the following graphic. The table shows the number of entries on which the scores are based.



Metric	Whole archive (#Entries)	Similar resolution (#Entries, resolution range(Å))
Clashscore	141614	5710 (2.10-2.10)
Ramachandran outliers	138981	5647 (2.10-2.10)
Sidechain outliers	138945	5648 (2.10-2.10)

The table below summarises the geometric issues observed across the polymeric chains and their fit to the electron density. The red, orange, yellow and green segments of the lower bar indicate the fraction of residues that contain outliers for ≥ 3 , 2, 1 and 0 types of geometric quality criteria respectively. A grey segment represents the fraction of residues that are not modelled. The numeric value for each fraction is indicated below the corresponding segment, with a dot representing fractions $\leq 5\%$.

Note EDS was not executed.

Mol	Chain	Length	Quality of chain
1	A	131	
1	B	131	

The following table lists non-polymeric compounds, carbohydrate monomers and non-standard residues in protein, DNA, RNA chains that are outliers for geometric or electron-density-fit criteria:

Mol	Type	Chain	Res	Chirality	Geometry	Clashes	Electron density
2	HXA	A	133	-	-	X	-
2	HXA	B	633	-	-	X	-

2 Entry composition [i](#)

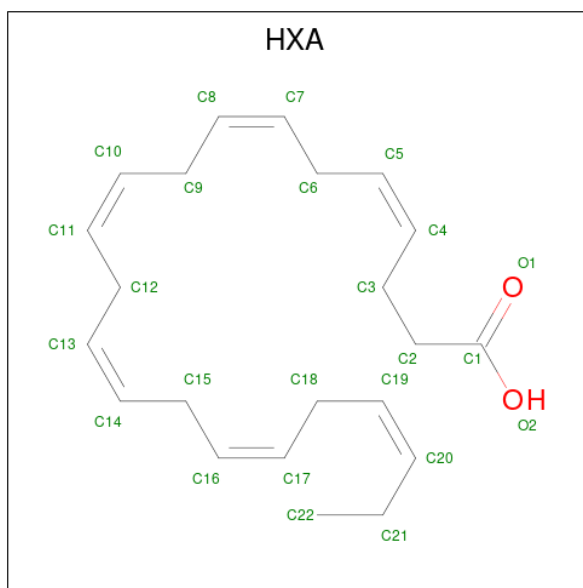
There are 3 unique types of molecules in this entry. The entry contains 2218 atoms, of which 0 are hydrogens and 0 are deuteriums.

In the tables below, the ZeroOcc column contains the number of atoms modelled with zero occupancy, the AltConf column contains the number of residues with at least one atom in alternate conformation and the Trace column contains the number of residues modelled with at most 2 atoms.

- Molecule 1 is a protein called FATTY ACID-BINDING PROTEIN, BRAIN.

Mol	Chain	Residues	Atoms					ZeroOcc	AltConf	Trace
			Total	C	N	O	S			
1	A	131	1037	653	175	204	5	0	0	0
1	B	131	1037	653	175	204	5	0	0	0

- Molecule 2 is DOCOSA-4,7,10,13,16,19-HEXAENOIC ACID (three-letter code: HXA) (formula: $C_{22}H_{32}O_2$).



Mol	Chain	Residues	Atoms			ZeroOcc	AltConf
			Total	C	O		
2	A	1	24	22	2	0	0
2	B	1	24	22	2	0	0

- Molecule 3 is water.

Mol	Chain	Residues	Atoms		ZeroOcc	AltConf
3	A	45	Total 45	O 45	0	0
3	B	51	Total 51	O 51	0	0

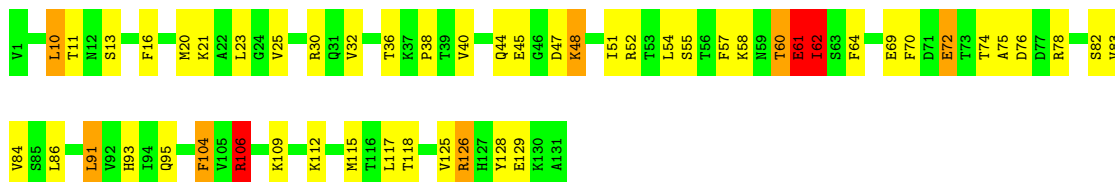
3 Residue-property plots

These plots are drawn for all protein, RNA, DNA and oligosaccharide chains in the entry. The first graphic for a chain summarises the proportions of the various outlier classes displayed in the second graphic. The second graphic shows the sequence view annotated by issues in geometry. Residues are color-coded according to the number of geometric quality criteria for which they contain at least one outlier: green = 0, yellow = 1, orange = 2 and red = 3 or more. Stretches of 2 or more consecutive residues without any outlier are shown as a green connector. Residues present in the sample, but not in the model, are shown in grey.

Note EDS was not executed.

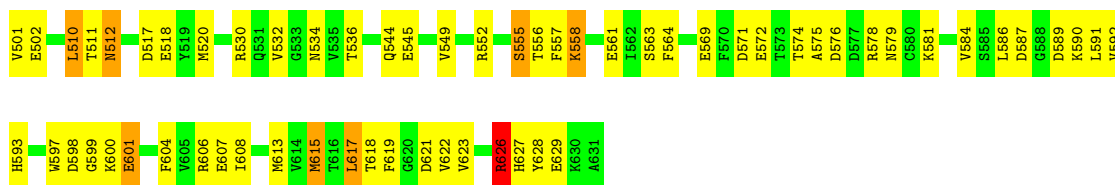
- Molecule 1: FATTY ACID-BINDING PROTEIN, BRAIN

Chain A: 



- Molecule 1: FATTY ACID-BINDING PROTEIN, BRAIN

Chain B: 



4 Data and refinement statistics

Xtriage (Phenix) and EDS were not executed - this section is therefore incomplete.

Property	Value	Source
Space group	P 1 21 1	Depositor
Cell constants a, b, c, α , β , γ	37.22Å 87.93Å 46.79Å 90.00° 113.40° 90.00°	Depositor
Resolution (Å)	15.00 – 2.10	Depositor
% Data completeness (in resolution range)	84.4 (15.00-2.10)	Depositor
R_{merge}	(Not available)	Depositor
R_{sym}	0.06	Depositor
Refinement program	X-PLOR, TNT	Depositor
R, R_{free}	0.180 , 0.257	Depositor
Estimated twinning fraction	No twinning to report.	Xtriage
Total number of atoms	2218	wwPDB-VP
Average B, all atoms (Å ²)	25.0	wwPDB-VP

5 Model quality i

5.1 Standard geometry i

Bond lengths and bond angles in the following residue types are not validated in this section: HXA

The Z score for a bond length (or angle) is the number of standard deviations the observed value is removed from the expected value. A bond length (or angle) with $|Z| > 5$ is considered an outlier worth inspection. RMSZ is the root-mean-square of all Z scores of the bond lengths (or angles).

Mol	Chain	Bond lengths		Bond angles	
		RMSZ	# Z >5	RMSZ	# Z >5
1	A	0.77	2/1053 (0.2%)	1.01	8/1418 (0.6%)
1	B	0.55	0/1053	0.85	5/1418 (0.4%)
All	All	0.67	2/2106 (0.1%)	0.93	13/2836 (0.5%)

Chiral center outliers are detected by calculating the chiral volume of a chiral center and verifying if the center is modelled as a planar moiety or with the opposite hand. A planarity outlier is detected by checking planarity of atoms in a peptide group, atoms in a mainchain group or atoms of a sidechain that are expected to be planar.

Mol	Chain	#Chirality outliers	#Planarity outliers
1	A	0	2

All (2) bond length outliers are listed below:

Mol	Chain	Res	Type	Atoms	Z	Observed(Å)	Ideal(Å)
1	A	61	GLU	C-N	18.31	1.76	1.34
1	A	72	GLU	CB-CG	-6.57	1.39	1.52

All (13) bond angle outliers are listed below:

Mol	Chain	Res	Type	Atoms	Z	Observed(°)	Ideal(°)
1	A	126	ARG	CB-CA-C	12.17	134.74	110.40
1	A	62	ILE	O-C-N	-11.83	103.77	122.70
1	A	106	ARG	CD-NE-CZ	11.44	139.61	123.60
1	B	555	SER	CB-CA-C	-7.70	95.48	110.10
1	A	104	PHE	CB-CG-CD1	-7.53	115.53	120.80
1	A	126	ARG	NE-CZ-NH2	7.46	124.03	120.30
1	A	62	ILE	CA-C-N	7.26	133.18	117.20
1	B	626	ARG	NE-CZ-NH2	7.26	123.93	120.30
1	A	61	GLU	C-N-CA	-6.21	106.17	121.70

Continued on next page...

Continued from previous page...

Mol	Chain	Res	Type	Atoms	Z	Observed(°)	Ideal(°)
1	A	104	PHE	CB-CG-CD2	6.16	125.11	120.80
1	B	615	MET	CG-SD-CE	6.13	110.02	100.20
1	B	604	PHE	CA-CB-CG	6.08	128.49	113.90
1	B	558	LYS	CD-CE-NZ	6.04	125.61	111.70

There are no chirality outliers.

All (2) planarity outliers are listed below:

Mol	Chain	Res	Type	Group
1	A	106	ARG	Sidechain
1	A	62	ILE	Mainchain

5.2 Too-close contacts

In the following table, the Non-H and H(model) columns list the number of non-hydrogen atoms and hydrogen atoms in the chain respectively. The H(added) column lists the number of hydrogen atoms added and optimized by MolProbity. The Clashes column lists the number of clashes within the asymmetric unit, whereas Symm-Clashes lists symmetry-related clashes.

Mol	Chain	Non-H	H(model)	H(added)	Clashes	Symm-Clashes
1	A	1037	0	1027	85	0
1	B	1037	0	1025	69	0
2	A	24	0	31	22	0
2	B	24	0	31	12	0
3	A	45	0	0	13	0
3	B	51	0	0	5	0
All	All	2218	0	2114	154	0

The all-atom clashscore is defined as the number of clashes found per 1000 atoms (including hydrogen atoms). The all-atom clashscore for this structure is 36.

All (154) close contacts within the same asymmetric unit are listed below, sorted by their clash magnitude.

Atom-1	Atom-2	Interatomic distance (Å)	Clash overlap (Å)
1:A:61:GLU:C	1:A:62:ILE:N	1.76	1.39
1:A:13:SER:CB	1:A:126:ARG:HG2	1.71	1.20
1:A:13:SER:HB2	1:A:126:ARG:HG2	1.24	1.19
1:B:510:LEU:HD23	1:B:626:ARG:NH1	1.62	1.14
1:A:62:ILE:HD11	2:A:133:HXA:H221	1.27	1.09

Continued on next page...

Continued from previous page...

Atom-1	Atom-2	Interatomic distance (Å)	Clash overlap (Å)
1:A:60:THR:CG2	2:A:133:HXA:H17	1.84	1.07
1:A:60:THR:HG21	2:A:133:HXA:H181	1.36	1.03
1:A:60:THR:HG21	2:A:133:HXA:C17	1.89	1.01
1:A:60:THR:HG21	2:A:133:HXA:C18	1.89	1.00
1:A:13:SER:HB2	1:A:126:ARG:CG	1.96	0.95
1:B:597:TRP:CG	1:B:597:TRP:O	2.20	0.95
2:A:133:HXA:H32	3:A:409:HOH:O	1.70	0.90
1:B:558:LYS:HD3	3:B:252:HOH:O	1.72	0.89
1:B:510:LEU:CD2	1:B:626:ARG:NH1	2.39	0.86
1:B:575:ALA:HB2	2:B:633:HXA:C17	2.06	0.86
1:B:510:LEU:HD13	1:B:511:THR:N	1.91	0.85
1:B:575:ALA:HB2	2:B:633:HXA:C19	2.07	0.84
1:A:60:THR:HG22	2:A:133:HXA:H17	1.61	0.82
1:A:60:THR:CG2	2:A:133:HXA:C17	2.51	0.82
1:B:555:SER:O	1:B:557:PHE:HD1	1.61	0.81
1:B:575:ALA:HB3	2:B:633:HXA:H19	1.63	0.81
1:B:575:ALA:CB	2:B:633:HXA:H19	2.12	0.79
1:A:62:ILE:CD1	1:A:72:GLU:OE2	2.29	0.79
1:B:558:LYS:CE	3:B:252:HOH:O	2.31	0.79
1:B:510:LEU:HD13	1:B:510:LEU:C	2.04	0.78
1:A:60:THR:HG21	2:A:133:HXA:H17	1.54	0.77
1:A:78:ARG:HH12	1:A:95:GLN:NE2	1.82	0.77
1:B:555:SER:O	1:B:557:PHE:N	2.18	0.77
1:A:75:ALA:CB	2:A:133:HXA:H19	2.14	0.76
1:A:62:ILE:CG2	1:A:70:PHE:CE1	2.69	0.76
1:A:104:PHE:HZ	3:A:405:HOH:O	1.67	0.75
1:A:75:ALA:HB2	2:A:133:HXA:C17	2.17	0.74
1:A:75:ALA:HB2	2:A:133:HXA:H19	1.67	0.74
1:A:75:ALA:HB2	2:A:133:HXA:C19	2.17	0.74
1:B:510:LEU:HD23	1:B:626:ARG:HH12	1.49	0.74
1:B:572:GLU:OE2	2:B:633:HXA:H221	1.87	0.74
1:B:555:SER:O	1:B:557:PHE:CD1	2.40	0.73
1:A:61:GLU:C	1:A:62:ILE:CA	2.57	0.73
1:B:575:ALA:CB	2:B:633:HXA:C19	2.65	0.73
1:A:62:ILE:HD13	1:A:72:GLU:OE2	1.89	0.72
1:A:32:VAL:O	1:A:36:THR:HG22	1.90	0.71
1:A:13:SER:HB3	1:A:126:ARG:HG2	1.68	0.71
1:B:558:LYS:CD	3:B:252:HOH:O	2.33	0.69
1:B:501:VAL:HG23	1:B:502:GLU:OE2	1.92	0.69
1:A:62:ILE:HG21	1:A:70:PHE:CE1	2.27	0.69
1:A:13:SER:CB	1:A:126:ARG:CG	2.61	0.67

Continued on next page...

Continued from previous page...

Atom-1	Atom-2	Interatomic distance (Å)	Clash overlap (Å)
1:B:598:ASP:O	1:B:600:LYS:N	2.22	0.67
1:B:626:ARG:HH11	1:B:626:ARG:HB3	1.59	0.66
1:B:510:LEU:C	1:B:510:LEU:CD1	2.64	0.66
1:B:532:VAL:O	1:B:536:THR:HG23	1.97	0.65
1:A:10:LEU:CD1	1:A:126:ARG:HH21	2.10	0.64
1:A:76:ASP:OD1	1:A:78:ARG:HD3	1.98	0.64
1:A:109:LYS:HE2	3:A:299:HOH:O	1.96	0.64
1:A:45:GLU:OE1	1:A:52:ARG:NH2	2.30	0.64
1:A:25:VAL:HG23	1:A:30:ARG:HG3	1.78	0.64
1:B:617:LEU:HD12	1:B:617:LEU:N	2.14	0.63
1:A:20:MET:HB3	1:A:25:VAL:HG21	1.80	0.63
1:A:20:MET:O	1:A:25:VAL:HG22	1.99	0.63
1:A:74:THR:HA	2:A:133:HXA:H223	1.81	0.63
1:B:574:THR:HA	2:B:633:HXA:H223	1.81	0.62
1:A:126:ARG:HH12	2:A:133:HXA:H21	1.63	0.62
1:B:575:ALA:CB	2:B:633:HXA:C17	2.77	0.62
1:A:115:MET:HE1	3:A:406:HOH:O	1.98	0.61
1:A:16:PHE:HB3	3:A:410:HOH:O	2.00	0.61
1:A:20:MET:HB3	1:A:25:VAL:CG2	2.31	0.61
1:A:93:HIS:HB2	3:A:408:HOH:O	2.00	0.60
1:A:125:VAL:O	1:A:126:ARG:HG3	2.02	0.60
1:A:40:VAL:HG11	3:A:406:HOH:O	2.03	0.59
1:B:597:TRP:O	1:B:597:TRP:CD1	2.56	0.59
1:A:60:THR:O	1:A:61:GLU:HB3	2.02	0.59
1:B:502:GLU:OE1	1:B:544:GLN:NE2	2.36	0.59
1:B:598:ASP:C	1:B:600:LYS:H	2.06	0.58
1:B:619:PHE:O	1:B:622:VAL:HG12	2.03	0.58
1:A:51:ILE:HD13	1:A:106:ARG:NH1	2.19	0.57
1:B:597:TRP:O	1:B:597:TRP:CD2	2.56	0.57
1:A:64:PHE:HA	3:A:207:HOH:O	2.03	0.57
1:B:501:VAL:HG13	1:B:586:LEU:HD11	1.87	0.57
1:B:572:GLU:OE2	2:B:633:HXA:C22	2.53	0.56
1:A:75:ALA:HB3	2:A:133:HXA:H91	1.88	0.56
1:B:584:VAL:HA	1:B:592:VAL:O	2.06	0.55
1:B:552:ARG:HD3	1:B:561:GLU:OE1	2.07	0.55
1:A:10:LEU:HD12	1:A:38:PRO:HD2	1.89	0.54
1:A:61:GLU:CA	1:A:62:ILE:N	2.68	0.54
1:B:549:VAL:HB	1:B:564:PHE:CE1	2.44	0.53
1:A:126:ARG:NH1	2:A:133:HXA:H21	2.23	0.53
1:B:575:ALA:H	2:B:633:HXA:C20	2.22	0.52
1:A:95:GLN:NE2	3:A:405:HOH:O	2.35	0.52

Continued on next page...

Continued from previous page...

Atom-1	Atom-2	Interatomic distance (Å)	Clash overlap (Å)
1:A:60:THR:O	1:A:61:GLU:CB	2.56	0.51
1:B:510:LEU:HD23	1:B:626:ARG:HH11	1.63	0.51
1:A:78:ARG:HH12	1:A:95:GLN:HE21	1.56	0.51
1:A:109:LYS:CE	3:A:281:HOH:O	2.59	0.51
1:A:125:VAL:O	1:A:126:ARG:CG	2.58	0.51
1:B:564:PHE:CE1	1:B:584:VAL:HG11	2.45	0.51
1:A:106:ARG:HE	1:A:115:MET:CE	2.24	0.50
1:B:575:ALA:HB2	2:B:633:HXA:C18	2.42	0.50
1:A:13:SER:CA	1:A:126:ARG:HG2	2.40	0.49
1:A:44:GLN:NE2	3:A:279:HOH:O	2.45	0.49
1:A:62:ILE:CG2	1:A:70:PHE:HE1	2.21	0.49
1:A:115:MET:CE	3:A:406:HOH:O	2.57	0.49
1:A:128:TYR:OH	2:A:133:HXA:O2	2.31	0.49
1:B:629:GLU:HB2	3:B:230:HOH:O	2.13	0.49
1:B:517:ASP:OD2	1:B:530:ARG:HD2	2.13	0.48
1:B:518:GLU:OE2	1:B:518:GLU:HA	2.12	0.48
1:B:520:MET:HE1	1:B:534:ASN:ND2	2.28	0.48
1:A:126:ARG:HH12	2:A:133:HXA:C2	2.26	0.48
1:A:69:GLU:HA	1:A:82:SER:O	2.14	0.48
1:B:574:THR:OG1	1:B:578:ARG:HB2	2.13	0.47
1:A:72:GLU:OE1	1:A:95:GLN:HG2	2.14	0.47
1:A:112:LYS:HE3	1:A:129:GLU:OE2	2.14	0.47
1:B:615:MET:HB3	1:B:628:TYR:HE2	1.79	0.47
1:A:106:ARG:HH21	1:A:115:MET:HE1	1.80	0.47
1:B:617:LEU:HD12	1:B:617:LEU:H	1.77	0.47
1:A:75:ALA:HB3	2:A:133:HXA:H19	1.93	0.46
1:B:510:LEU:CD2	1:B:626:ARG:HH11	2.21	0.46
1:A:13:SER:HB2	1:A:126:ARG:CD	2.43	0.46
1:A:75:ALA:H	2:A:133:HXA:C20	2.27	0.46
1:B:555:SER:C	1:B:557:PHE:H	2.17	0.46
1:A:62:ILE:HG21	1:A:70:PHE:HE1	1.76	0.46
1:B:621:ASP:OD2	1:B:621:ASP:C	2.54	0.45
1:A:23:LEU:HB3	1:A:25:VAL:HG13	1.97	0.45
1:A:117:LEU:HD12	1:A:117:LEU:N	2.30	0.45
1:B:601:GLU:O	1:B:601:GLU:HG3	2.13	0.45
1:B:575:ALA:H	2:B:633:HXA:H20	1.82	0.45
1:B:607:GLU:HG2	1:B:608:ILE:N	2.32	0.45
1:B:587:ASP:O	1:B:590:LYS:NZ	2.44	0.44
1:B:606:ARG:HD3	1:B:613:MET:SD	2.57	0.44
1:A:11:THR:HG21	1:A:129:GLU:OE1	2.16	0.44
1:A:62:ILE:HG21	1:A:70:PHE:CZ	2.52	0.44

Continued on next page...

Continued from previous page...

Atom-1	Atom-2	Interatomic distance (Å)	Clash overlap (Å)
1:A:125:VAL:C	1:A:126:ARG:HG3	2.38	0.44
1:B:571:ASP:OD2	1:B:581:LYS:HE2	2.16	0.44
1:B:564:PHE:CZ	1:B:584:VAL:HG11	2.52	0.44
1:A:48:LYS:HE2	1:A:48:LYS:HB3	1.72	0.43
1:A:109:LYS:NZ	3:A:281:HOH:O	2.32	0.43
1:B:502:GLU:CD	1:B:544:GLN:HE22	2.22	0.43
1:A:106:ARG:HG2	1:A:115:MET:HE2	2.01	0.43
1:B:576:ASP:OD1	1:B:578:ARG:HD3	2.18	0.43
1:B:587:ASP:HB3	1:B:590:LYS:HE2	1.99	0.43
1:A:54:LEU:HD22	1:B:545:GLU:HG2	2.00	0.43
1:A:36:THR:HB	1:A:57:PHE:CE1	2.53	0.43
1:B:598:ASP:O	1:B:600:LYS:HG3	2.18	0.42
1:B:555:SER:C	1:B:557:PHE:N	2.66	0.42
1:A:76:ASP:OD1	1:A:78:ARG:CD	2.68	0.42
1:A:91:LEU:HD23	1:A:91:LEU:HA	1.89	0.42
1:A:69:GLU:HA	1:A:83:VAL:HG22	2.00	0.42
1:A:64:PHE:CE1	1:A:84:VAL:HB	2.56	0.41
1:A:75:ALA:H	2:A:133:HXA:H20	1.85	0.41
1:B:615:MET:HG2	1:B:617:LEU:HD11	2.01	0.41
1:A:10:LEU:HD12	1:A:126:ARG:HH21	1.83	0.41
1:B:510:LEU:HD13	1:B:512:ASN:N	2.36	0.41
1:B:618:THR:HG22	1:B:623:VAL:HG13	2.02	0.41
1:B:593:HIS:HB2	3:B:203:HOH:O	2.21	0.41
1:B:549:VAL:O	1:B:563:SER:HA	2.21	0.40
1:B:512:ASN:HB3	1:B:627:HIS:HB2	2.03	0.40
1:A:48:LYS:H	1:A:48:LYS:HG2	1.64	0.40

There are no symmetry-related clashes.

5.3 Torsion angles

5.3.1 Protein backbone

In the following table, the Percentiles column shows the percent Ramachandran outliers of the chain as a percentile score with respect to all X-ray entries followed by that with respect to entries of similar resolution.

The Analysed column shows the number of residues for which the backbone conformation was analysed, and the total number of residues.

Mol	Chain	Analysed	Favoured	Allowed	Outliers	Percentiles	
1	A	129/131 (98%)	123 (95%)	5 (4%)	1 (1%)	19	15
1	B	129/131 (98%)	121 (94%)	6 (5%)	2 (2%)	9	5
All	All	258/262 (98%)	244 (95%)	11 (4%)	3 (1%)	13	8

All (3) Ramachandran outliers are listed below:

Mol	Chain	Res	Type
1	A	61	GLU
1	B	556	THR
1	B	599	GLY

5.3.2 Protein sidechains [i](#)

In the following table, the Percentiles column shows the percent sidechain outliers of the chain as a percentile score with respect to all X-ray entries followed by that with respect to entries of similar resolution.

The Analysed column shows the number of residues for which the sidechain conformation was analysed, and the total number of residues.

Mol	Chain	Analysed	Rotameric	Outliers	Percentiles	
1	A	115/115 (100%)	104 (90%)	11 (10%)	8	5
1	B	115/115 (100%)	106 (92%)	9 (8%)	12	9
All	All	230/230 (100%)	210 (91%)	20 (9%)	10	7

All (20) residues with a non-rotameric sidechain are listed below:

Mol	Chain	Res	Type
1	A	10	LEU
1	A	21	LYS
1	A	47	ASP
1	A	48	LYS
1	A	55	SER
1	A	58	LYS
1	A	60	THR
1	A	61	GLU
1	A	86	LEU
1	A	91	LEU
1	A	118	THR
1	B	510	LEU
1	B	512	ASN

Continued on next page...

Continued from previous page...

Mol	Chain	Res	Type
1	B	569	GLU
1	B	579	ASN
1	B	589	ASP
1	B	591	LEU
1	B	601	GLU
1	B	617	LEU
1	B	626	ARG

Sometimes sidechains can be flipped to improve hydrogen bonding and reduce clashes. All (8) such sidechains are listed below:

Mol	Chain	Res	Type
1	A	14	GLN
1	A	15	ASN
1	A	95	GLN
1	B	512	ASN
1	B	534	ASN
1	B	544	GLN
1	B	565	GLN
1	B	579	ASN

5.3.3 RNA [i](#)

There are no RNA molecules in this entry.

5.4 Non-standard residues in protein, DNA, RNA chains [i](#)

There are no non-standard protein/DNA/RNA residues in this entry.

5.5 Carbohydrates [i](#)

There are no monosaccharides in this entry.

5.6 Ligand geometry [i](#)

2 ligands are modelled in this entry.

In the following table, the Counts columns list the number of bonds (or angles) for which Mogul statistics could be retrieved, the number of bonds (or angles) that are observed in the model and the number of bonds (or angles) that are defined in the Chemical Component Dictionary. The

Link column lists molecule types, if any, to which the group is linked. The Z score for a bond length (or angle) is the number of standard deviations the observed value is removed from the expected value. A bond length (or angle) with $|Z| > 2$ is considered an outlier worth inspection. RMSZ is the root-mean-square of all Z scores of the bond lengths (or angles).

Mol	Type	Chain	Res	Link	Bond lengths			Bond angles		
					Counts	RMSZ	# Z > 2	Counts	RMSZ	# Z > 2
2	HXA	B	633	-	23,23,23	0.50	0	23,23,23	0.57	1 (4%)
2	HXA	A	133	-	23,23,23	0.56	0	23,23,23	0.39	0

In the following table, the Chirals column lists the number of chiral outliers, the number of chiral centers analysed, the number of these observed in the model and the number defined in the Chemical Component Dictionary. Similar counts are reported in the Torsion and Rings columns. '-' means no outliers of that kind were identified.

Mol	Type	Chain	Res	Link	Chirals	Torsions	Rings
2	HXA	B	633	-	-	6/21/21/21	-
2	HXA	A	133	-	-	8/21/21/21	-

There are no bond length outliers.

All (1) bond angle outliers are listed below:

Mol	Chain	Res	Type	Atoms	Z	Observed(°)	Ideal(°)
2	B	633	HXA	C3-C2-C1	-2.10	105.70	112.40

There are no chirality outliers.

All (14) torsion outliers are listed below:

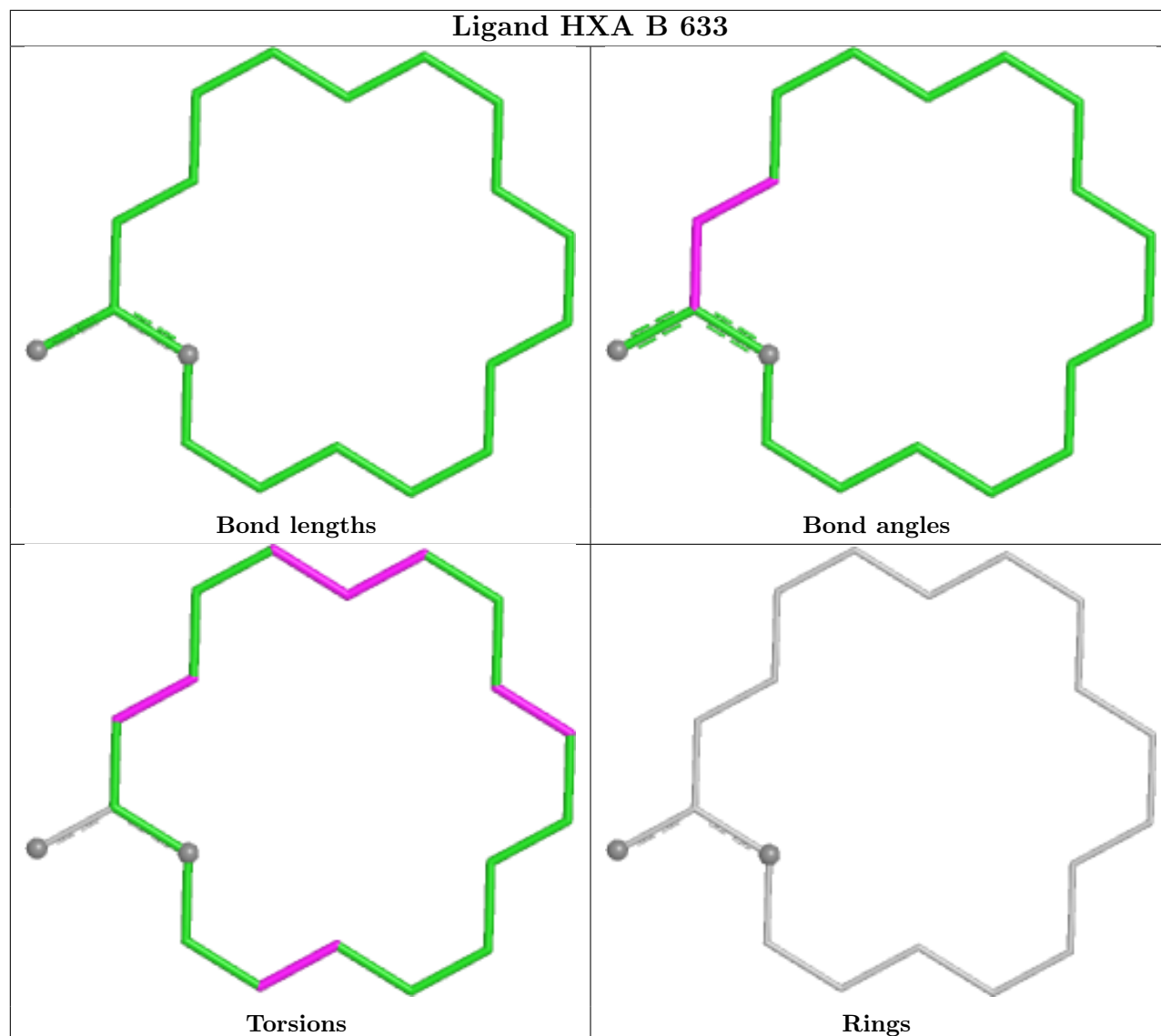
Mol	Chain	Res	Type	Atoms
2	A	133	HXA	C1-C2-C3-C4
2	B	633	HXA	C1-C2-C3-C4
2	A	133	HXA	C4-C5-C6-C7
2	A	133	HXA	C5-C6-C7-C8
2	A	133	HXA	C14-C15-C16-C17
2	B	633	HXA	C4-C5-C6-C7
2	B	633	HXA	C5-C6-C7-C8
2	B	633	HXA	C14-C15-C16-C17
2	A	133	HXA	C19-C20-C21-C22
2	B	633	HXA	C19-C20-C21-C22
2	A	133	HXA	C11-C10-C9-C8
2	B	633	HXA	C11-C10-C9-C8
2	A	133	HXA	O2-C1-C2-C3
2	A	133	HXA	O1-C1-C2-C3

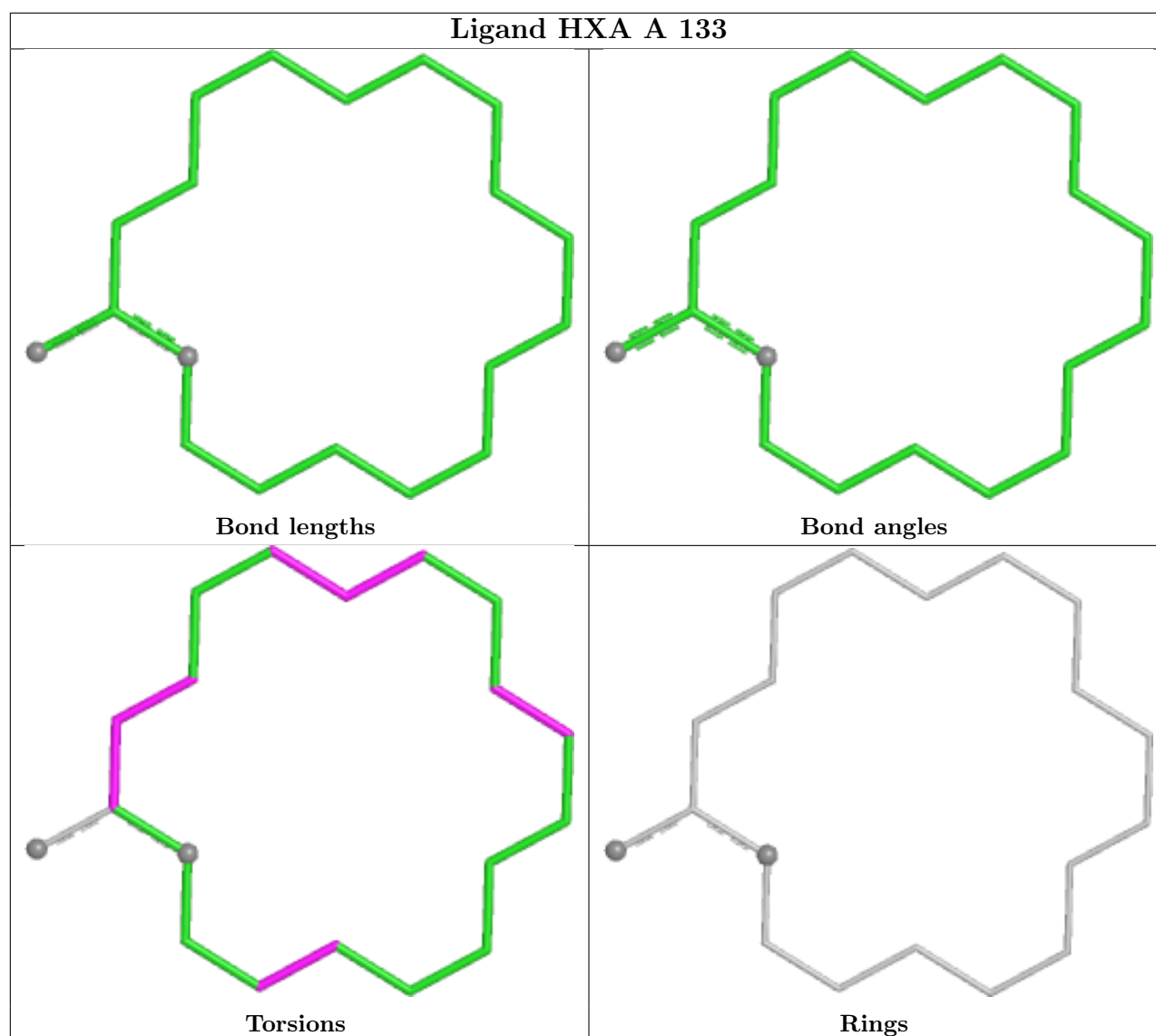
There are no ring outliers.

2 monomers are involved in 34 short contacts:

Mol	Chain	Res	Type	Clashes	Symm-Clashes
2	B	633	HXA	12	0
2	A	133	HXA	22	0

The following is a two-dimensional graphical depiction of Mogul quality analysis of bond lengths, bond angles, torsion angles, and ring geometry for all instances of the Ligand of Interest. In addition, ligands with molecular weight > 250 and outliers as shown on the validation Tables will also be included. For torsion angles, if less than 5% of the Mogul distribution of torsion angles is within 10 degrees of the torsion angle in question, then that torsion angle is considered an outlier. Any bond that is central to one or more torsion angles identified as an outlier by Mogul will be highlighted in the graph. For rings, the root-mean-square deviation (RMSD) between the ring in question and similar rings identified by Mogul is calculated over all ring torsion angles. If the average RMSD is greater than 60 degrees and the minimal RMSD between the ring in question and any Mogul-identified rings is also greater than 60 degrees, then that ring is considered an outlier. The outliers are highlighted in purple. The color gray indicates Mogul did not find sufficient equivalents in the CSD to analyse the geometry.





5.7 Other polymers [i](#)

There are no such residues in this entry.

5.8 Polymer linkage issues [i](#)

The following chains have linkage breaks:

Mol	Chain	Number of breaks
1	A	1

All chain breaks are listed below:

Model	Chain	Residue-1	Atom-1	Residue-2	Atom-2	Distance (Å)
1	A	61:GLU	C	62:ILE	N	1.76

6 Fit of model and data [i](#)

6.1 Protein, DNA and RNA chains [i](#)

EDS was not executed - this section is therefore empty.

6.2 Non-standard residues in protein, DNA, RNA chains [i](#)

EDS was not executed - this section is therefore empty.

6.3 Carbohydrates [i](#)

EDS was not executed - this section is therefore empty.

6.4 Ligands [i](#)

EDS was not executed - this section is therefore empty.

6.5 Other polymers [i](#)

EDS was not executed - this section is therefore empty.